

2014



*NEBRASKA DEPARTMENT  
OF CORRECTIONAL SERVICES*

40th

Annual Report  
and  
Statistical Summary



# Department of Correctional Services Directory

## Agency 46



### Department of Correctional Services

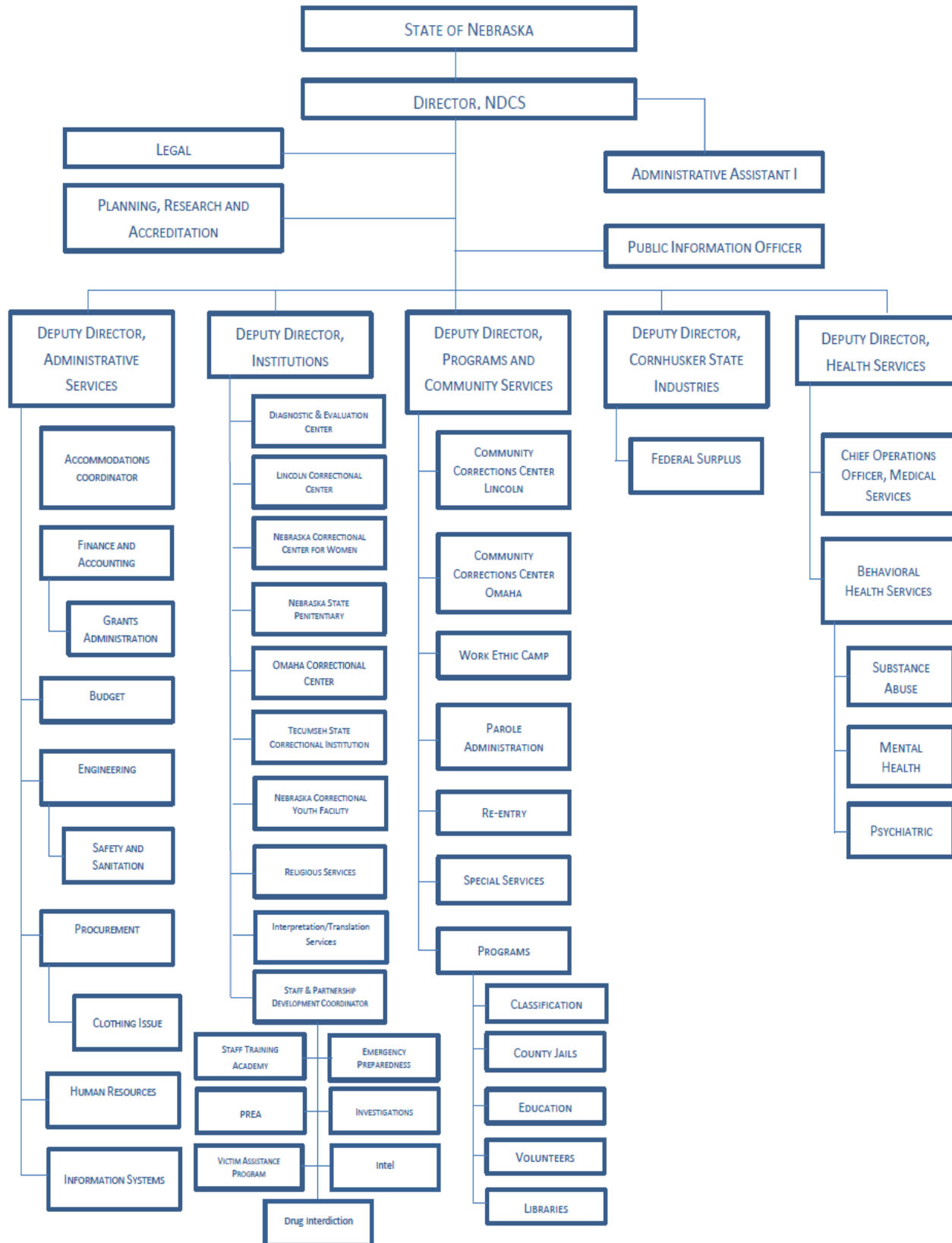
P.O. Box 94661  
 Location: Folsom & W. Prospector Pl.  
 Lincoln, NE 68509-4661  
 Building #1  
 (Lincoln Regional Center Campus)  
 TDD (402)479-5895  
 FAX Numbers:  
 Main Fax-Lobby 402-479-5119  
 Director's Office 402-479-5623  
 MICHAEL KENNEY, Director 402-471-2654

Deputy Director, Administrative Services, Robin Spindler  
 Deputy Director, Institutions, Frank X. Hopkins  
 Deputy Director, Programs and Community Services, Larry Wayne  
 Deputy Director, Health Services, Randy Kohl, MD  
 Deputy Director, Cornhusker State Industries, John McGovern

Accounting and Finance Manager .....Inga Hookstra  
 ADA Coordinator .....Matthew Parker  
 Victim Assistance Program .....April Bulling-June  
 Adult Parole Administrator .....Cathy Gibson-Beltz  
 Budget Management Analyst .....Christina Peters  
 Corrections Programs Administrator .....Layne Gissler  
 Director of Nursing .....Diana Tomek  
 Facilities Engineering Manager .....Douglas K. Hanson  
 Human Resources Administrator .....Erinn Criner  
 Information Systems Administrator .....Robert Shanahan  
 Legislative Liaison .....James Foster  
 Legal Division .....George Green  
 Emergency Management Supervisor .....Brad Hansen  
 Materiel Administrator .....Mary Carmichael  
 Grants Administrator .....Steve Weis  
 Planning, Research and Accreditation .....Jeff Beaty  
 Organizational Development /  
     Staff Training Academy .....Brad Hansen  
 Records Administrator .....Kyle Poppert  
 Safety/Sanitation Coordinator .....Steve Vodicka  
 Special Services Administrator .....Kyle Poppert  
 Behavioral Health Administrator .....Cameron White, PhD  
 Behavioral Health Asst Administrator for  
     Mental Health Director .....Mark Weilage, PhD  
 Behavioral Health Asst Administrator for  
     Substance Abuse Program .....Richard Thomas, PhD  
 Behavioral Health Asst Administrator for  
     Psychiatry .....Mohammed Kamal, MD



# Nebraska Department of Correctional Services Organizational Chart





Director  
Nebraska Department of Correctional Services



Michael L. Kenney

Mike Kenney received a B.A. in Psychology in 1975 before attending the University of British Columbia, Regent College, in 1976 where he studied Counseling and Ethics. He began his correctional career in 1977 as a counselor at the Nebraska State Penitentiary, and has held various positions within the Nebraska DOC over the last 36 years. He spent two years with the Washington State DOC as Deputy Director of the East Prisons Command and had been the warden of six different prisons prior to being appointed Director of the Nebraska Department of Correctional Services in 2013. Mike believes everyone who deliberately serves others is a leader.



# Table of Contents



Agency Directory ..... 1

Organizational Chart ..... 2

Director’s Bibliography and Perspective ..... 3

TABLE OF CONTENTS ..... 4

**SECTION I**

NDCS Mission Statement ..... 6

NDCS Ethics ..... 7

NDCS Vision Points ..... 8

**SECTION II**

DEPUTY DIRECTORS ..... 10

ADMINISTRATIVE SERVICES ..... 11

DEPUTY DIRECTOR OF INSTITUTIONS ..... 12

    Diagnostic and Evaluation Center ..... 13

    Lincoln Correctional Center ..... 13

    Nebraska Correctional Center for Women ..... 14

    Nebraska Correctional Youth Facility ..... 14

    Nebraska State Penitentiary ..... 15

    Omaha Correctional Center ..... 15

    Tecumseh State Correctional Institution ..... 16

DEPUTY DIRECTOR OF PROGRAMS AND COMMUNITY SERVICES ..... 17

    Community Corrections Center-Lincoln ..... 18

    Community Corrections Center-Omaha ..... 18

    Work Ethic Camp ..... 19

    Adult Parole Administration ..... 20

DEPUTY DIRECTOR OF HEALTH SERVICES ..... 21

DEPUTY DIRECTOR OF CORNHUSKER STATE INDUSTRIES ..... 22

    Cornhusker State Industries ..... 23

    Federal Surplus ..... 23



**STATISTICAL SUMMARY**

**SECTION III**

Admissions and Releases ..... 25  
Average Monthly Population ..... 26

**SECTION IV— TOTAL POPULATION**

Female ..... 27  
Male ..... 31  
Parole ..... 34

**SECTION V—ADMISSIONS**

New Sentenced Admissions ..... 37  
Revocation Admissions ..... 40  
Evaluators / Safekeepers Admissions ..... 44  
Work Ethic Camp Admissions ..... 45

**SECTION VI — RELEASES**

Institutional Releases ..... 47  
Evaluators / Safekeepers Releases ..... 50  
Work Ethic Camp Releases ..... 52

**SECTION VII—COMMUNITY CORRECTIONS**

Community Corrections Admissions ..... 54

**SECTION VIII—PAROLE**

Parole Admissions ..... 56  
Parole Discharges ..... 59  
Parole Revocations ..... 62

**SECTION IX—RECIDIVISM REPORT**

Recidivism Data ..... 65



## MISSION STATEMENT

The Mission of the Department of Correctional Services is to serve and protect the public by providing control, humane care, and program opportunities for those individuals placed in its custody and supervision, thereby facilitating their return to society as responsible persons.



## NDCS Ethics



# Nebraska Department of Correctional Services Ethics

We respect and protect the safety and rights of the public we serve.

We respect the importance of all programs / departments, within and outside of the Agency, in order to facilitate good communication and cooperation.

We respect and protect the civil and legal rights of all individuals. We will not use any type of cruel, inhumane, or corporal punishment, excessive force or in any way mistreat individuals under the Agency's custody and control.

We preserve the integrity of private information.

We make all appointments, promotions and dismissals in accordance with rules, laws, and merit, rather than the furtherance of personal interest or favoritism.

We promote and contribute to a work place that is safe, healthy, and free of harassment in any form. We will not discriminate against any person because of race, sex, color, religion, ancestry, national origin, disability or age.

We keep conversations with all persons on a professional level at all times. We will not use profane or abusive language toward others. We communicate in a way that promotes respect and maintains satisfactory working relationships.

We will not bring in any type of contraband to an Agency facility / program area.

We will not use personnel, property, resources, or funds other than in accordance with prescribed constitutional, statutory, and regulatory procedure. We will be good stewards of state resources, including efficient use of our work time.

We maintain professional and credible behavior by exemplifying the Agency's Mission Statement and Vision Points.





NDCS  
Vision Points

**2004-Present**



**CREDIBILITY**

We commit ourselves to furthering public trust and credibility

**SEAMLESS CRIMINAL JUSTICE SYSTEM**

We commit ourselves through collaboration with other entities to create a seamless criminal justice system within a restorative justice framework

**COMMUNITY AWARENESS AND INVOLVEMENT**

We commit ourselves to partnering with the community to encourage awareness and involvement toward the successful reintegration of offenders

**BEST PRACTICES**

We commit ourselves to identifying and implementing best practices

**FISCAL ACCOUNTABILITY**

We commit ourselves to fiscal accountability and cost efficient and effective operations

**OFFENDER ACCOUNTABILITY**

We commit ourselves to developing and maintaining environments in which offender accountability will flourish

**FAMILY INVOLVEMENT**

We commit ourselves to developing and fostering strategies that allow families an active role in the offenders' incarceration and reintegration

**COMMITMENT TO STAFF**

We commit ourselves to partnering with staff who strive to optimize their contribution to our mission and standards

**OFFENDER PROGRAMS**

We commit ourselves to creating and sustaining meaningful program opportunities for offenders



# Deputy Directors

Robin Spindler, Administrative Services

Frank X. Hopkins, Institutions

Larry Wayne, Programs and Community Services

Dr. Randy Kohl, Health Services

John McGovern, Cornhusker State Industries



## Deputy Director of Administrative Services



The Deputy Director of Administrative Services is responsible for the oversight of the following programs and areas:

Accommodations Coordinator

Finance and Accounting

Grants Administration

Budget

Engineering

Safety and Sanitation

Procurement

Clothing Issue

Human Resources

Information Services

Deputy Director Spindler has worked for the Nebraska Department of Correctional Services for over 20 years. She began her correctional career at the Omaha Correctional Center and has worked in various positions since that time.

Deputy Director Spindler has taught classes at Bellevue University and Kaplan University.

Deputy Director Spindler earned a Juris Doctorate in 1984.

She was appointed Deputy Director of Administrative Services in August of 2005





Deputy Director of Institutions is responsible for the oversight of the following institutions and areas:

- Diagnostic and Evaluation Center
- Lincoln Correctional Center
- Nebraska Correctional Center for Women
- Nebraska Correctional Youth Facility
- Nebraska State Penitentiary
- Omaha Correctional Center
- Tecumseh State Correctional Institution
- Religious Services
- Interpretation/Translation Services
- Staff & Partnership Development Coordinator
- Staff Training Academy
- PREA
- Victim Assistance Program
- Emergency Preparedness
- Investigations
- Intel
- Drug Interdiction



Deputy Director Hopkins has held a number of positions in the Department of Correctional Services, including Warden of the Nebraska State Penitentiary for nine years.

He has taught classes at Wesleyan University and earned a Masters degree in Criminal Justice in 1980.

Deputy Director Hopkins was appointed Deputy Director - Institutions, effective October 4, 1999.



**DIAGNOSTIC AND EVALUATION CENTER  
DEC**

**THE DIAGNOSTIC AND EVALUATION CENTER, LOCATED IN LINCOLN, NEBRASKA WAS OPENED IN AUGUST OF 1979 AS A 160-BED, MAXIMUM CUSTODY, RECEPTION, DIAGNOSTIC, EVALUATION, AND ASSIGNMENT FACILITY.**



Design Capacity - 160  
Average Population - 470.77  
Number of Authorized Staff - 137.50  
Cost per inmate per year - \$32,230

ACA Accredited since 1984

As DEC and LCC are located together and are connected by tunnel, they are able to share a variety of services. Some of these services include food service, mail, health services and restrictive housing.

**LINCOLN CORRECTIONAL CENTER  
LCC**

**THE LINCOLN CORRECTIONAL CENTER LOCATED IN LINCOLN, NEBRASKA, IS A MEDIUM, MAXIMUM-SECURITY INSTITUTION FOR ADULT MALES. LCC HAS AN IN-PATIENT MEHTAL HEALTH UNIT, A PROTECTIVE CUSTODY UNIT, AND AN IN-PATIENT SEX OFFENDER PROGRAM, IN ADDITION TO GENERAL POPULATION INMATES. LCC ALSO CONTAINS RESTRICTIVE HOUSING FOR THOSE INMATES WHO NEED THIS HOUSING.**

Design Capacity - 308  
Average Population - 498.19  
Number of Authorized Staff - 232  
Cost per inmate per year - \$41,459

ACA Accredited since 1984





### **NEBRASKA CORRECTIONAL CENTER FOR WOMEN NCCW**

**THE NEBRASKA CORRECTIONAL CENTER FOR WOMEN IS THE ONLY SECURE STATE CORRECTIONAL INSTITUTION FOR ADULT WOMEN. THE CURRENT INSTITUTION CONSISTS OF 17 BUILDINGS ON 27 ACRES OF LAND SECURED BY TWO SECURITY FENCES.**

**NCCW BEGAN OPERATION IN 1920 AS THE "STATE REFORMATORY FOR WOMEN"**



Design Capacity - 275  
Average Population - 328.08  
Number of Authorized Staff - 126.50  
Cost per inmate per year - \$39,875

ACA Accredited since 1981

### **NEBRASKA CORRECTIONAL YOUTH FACILITY**

#### **NCYF**

**THE NEBRASKA CORRECTIONAL YOUTH FACILITY CAME INTO EXISTENCE IN 1994. IT IS A MAXIMUM, MEDIUM, AND MINIMUM FACILITY. NCYF SERVES AS THE RECEPTION CENTER FOR ALL INMATES WHO ARE 18 YEARS OF AGE AND UNDER WITHIN THE NEBRASKA DEPARTMENT OF CORRECTIONAL SERVICES.**

Design Capacity - 68  
Average Population - 78.04  
Number of Authorized Staff - 75  
Cost per inmate per year - \$92,256

ACA Accredited since 2000





### NEBRASKA STATE PENITENTIARY NSP

**THE NEBRASKA STATE PENITENTIARY LOCATED IN LINCOLN IS THE OLDEST STATE CORRECTIONAL FACILITY IN NEBRASKA, OPENING IN 1869. THE INMATE POPULATION AT THE NSP TYPICALLY CONSISTS OF 21-YEAR-OLD OFFENDERS AND ABOVE SERVING MEDIUM TO LONGER SENTENCES.**



Design Capacity - 718  
Average Population - 1,316.36  
Number of Authorized Staff - 452  
Cost per inmate per year - \$33,886

ACA Accredited since 1985

### OMAHA CORRECTIONAL CENTER OCC

**THE OMAHA CORRECTIONAL CENTER IS A MEDIUM/MINIMUM SECURITY FACILITY LOCATED ON A 37-ACRE SITE IN EAST OMAHA, JUST SOUTH OF EPPLEY AIRFIELD. OCC WAS OPENED APRIL 24, 1984.**

Design Capacity - 396  
Average Population - 755.63  
Number of Authorized Staff - 175  
Cost per inmate per year - \$25,922

ACA Accredited since 1986







**TECUMSEH STATE CORRECTIONAL  
INSTITUTION  
TSCI**

**THE TECUMSEH STATE CORRECTIONAL INSTITUTION (TSCI) WAS ESTABLISHED BY LB 150 IN 1997.  
THE TECUMSEH STATE CORRECTIONAL INSTITUTION IS THE ONLY MAXIMUM/MEDIUM CUSTODY, ADULT  
MALE FACILITY IN A RURAL SETTING.**



Design Capacity - 960  
Average Population - 1,028.16  
Number of Authorized Staff - 431  
Cost per inmate per year - \$36,605

ACA Accredited since 2003



The Deputy Director of Programs and Community Services is responsible for the oversight of the following institutions and areas:

Community Corrections Center-Lincoln

Community Corrections Center-Omaha

Work Ethic Camp

Adult Parole Administration

Re-Entry

Special Services

Programs

Classification

County Jails

Education

Volunteers

Libraries



Deputy Director Wayne has worked for the Nebraska Department of Correctional Services for 33 years.

He has worked in various capacities within the Department and served as Warden ten years at the Nebraska Correctional Center for Women and three years at the Diagnostic and Evaluation Center.

He was appointed Deputy Director of Programs and Community Services in September of 2003.



### **COMMUNITY CORRECTIONS CENTER-LINCOLN**

**THE PRESENT FACILITY, OPENED IN JULY OF 1993, WAS DESIGNED AS A CO-ED CENTER WITH FOUR HOUSING UNITS (3 MALE AND 1 FEMALE) AND THE CAPACITY TO HOUSE 44 FEMALES AND 156 MALES.**

Design Capacity - 200  
Average Population - 378.91  
Number of Authorized Staff - 49  
Cost per inmate per year - \$18,833

ACA Accredited since 1981



### **COMMUNITY CORRECTIONS CENTER-OMAHA**

**THE COMMUNITY CORRECTIONS CENTER-OMAHA HOUSES INMATES WHO ARE CLASSIFIED AT COMMUNITY A OR B CUSTODY LEVELS AND ARE NEAR THE DISCHARGE OF THEIR SENTENCE OR PENDING A PAROLE HEARING.**



Design Capacity - 90  
Average Population - 160.49  
Number of Authorized Staff - 28.50  
Cost per inmate per year - \$21,905

ACA Accredited since 1981



### **WORK ETHIC CAMP McCook**

**WEC PROVIDES AN INDIVIDUALIZED PROGRAM IN A TIME FRAME APPROPRIATE FOR THE INDIVIDUAL'S NEEDS AND SENTENCE STRUCTURE. FOR PROBATIONERS AND PAROLE VIOLATORS, THEIR PROGRAM CANNOT EXCEED 180 DAYS. THE FACILITY IS DESIGNED FOR MALE OFFENDERS/INMATES APPROACHING RELEASE ON PROBATION AND PAROLE OR PROGRESSING TO COMMUNITY CUSTODY.**

Design Capacity - 100  
Average Population - 172.43  
Number of Authorized Staff - 72  
Cost per inmate per year - \$40,666

ACA Accredited since 2004





## NDCS Programs and Community Services



**Adult Parole Administration**  
**P.O. Box 94661 Folsom and W. Prospector Place**  
**Lincoln, Nebraska 68509-4661**  
**Cathy Gibson-Beltz, Parole Administrator**  
**Anne Hansen, Assistant Parole Administrator**

The Office of Adult Parole Administration was established by an act of legislation in 1969 as a program under the Department of Correctional Services. Adult Parole Administration provides supervision, guidance and assistance to offenders paroled by the Board of Parole as they re-enter the community after a period of incarceration. There are adult parole offices located in Omaha, Lincoln, Norfolk, Grand Island, North Platte, McCook and Scottsbluff to provide supervision and surveillance of parolees and sex offenders across the state.

### 1. Adult Parole Central Office-Lincoln:

Folsom and W. Prospector Place, Bldg #1  
 (on The Lincoln Regional Center Campus)  
 P.O. Box 94661  
 Lincoln, NE 68509-4661  
 (402) 479-5771  
 FAX: (402) 479-5804

### 2. Nebraska Interstate Compact Office (Parole):

Folsom and W. Prospector Place, Bldg #1  
 (on the Lincoln Regional Center Campus)  
 P.O. Box 94661  
 Lincoln, NE 68509-4661  
 (402) 479-5768  
 FAX: (402) 479-5804

### 3. Lincoln District Parole Office:

3800 Vermaas Place, Suite 100  
 Lincoln, NE 68502  
 (402) 471-1280  
 FAX: (402) 471-1283

### 4. Lifetime Sex Offender Unit:

3800 Vermaas Place, Suite 100  
 Lincoln, NE 68502  
 (402) 471-1284  
 FAX: (402) 471-1283

### 5. Omaha District Parole Office:

1313 Farnam Street  
 Omaha, NE 68102-1869  
 (402) 595-2050  
 FAX: (402) 595-3874

### 6. Scottsbluff Regional Parole Office:

Panhandle Office Complex  
 P.O. Box 1500, 4500 Ave. I  
 Scottsbluff, NE 69363-1500  
 (308) 632-1283  
 FAX: (308) 632-1313

### 7. North Platte Regional Parole Office:

State Office Building  
 200 South Silber Avenue  
 North Platte, NE 69101  
 (308) 535-8115  
 FAX: (308) 535-8175

### 8. Grand Island Regional Parole Office:

TierOne Bank Building  
 1811 West 2nd Street, Suite 225  
 Grand Island, NE 68803  
 (308) 385-6230 or (308) 385-6215  
 FAX: (308) 385-6017

### 9. Norfolk Regional Parole Office:

Norfolk Regional Center  
 P.O. Box 1209  
 1700 North Victory Rd.  
 Norfolk, NE 68702-1209  
 (402) 370-3136 or (402) 370-3539  
 FAX: (402) 370-4332

### 10. McCook Regional Parole Office:

Work Ethic Camp  
 P.O. Box 1150  
 2309 North Highway 83  
 McCook, NE 69001  
 (308) 345-8457  
 FAX: (308) 345-8405



The Deputy Director of Health Services is responsible for the oversight of the following areas:

Chief Operations Officer, Medical Services

Behavioral Health Services

Substance Abuse

Mental Health

Psychiatric



Deputy Director Randy Kohl joined the Nebraska Dept. of Correctional Services in Oct. 2001

Deputy Director Kohl received his MD from UNMC and is residency trained in Family Medicine.



## Deputy Director of Cornhusker State Industries



The Deputy Director of Cornhusker State Industries is responsible for the oversight of the following areas.

### Cornhusker State Industries:

- 4 wood shops
- 2 sewing shops
- 2 laundry facilities
- Data Entry, Braille, Chemicals, License Plates, Metal and Print Shops
- Private Industry shops
- Fleet of 8 delivery trucks

### Federal Surplus Property:

- Screen, receive and distribute federal surplus property to eligible state & local governmental subdivisions and certain non-profit agencies
- Administers Law Enforcement (1033 & 1122) programs
- Administers an aviation fuel program so Nebraska's law enforcement can obtain federally discounted prices for fuel



Deputy Director John McGovern joined the Nebraska Department of Correctional Services in March 2003.

John is responsible for the overall management of Cornhusker State Industries and the Federal Surplus Program.

John has significant private sector management experience in general management, sales and marketing, manufacturing, quality, administration, business development and services industries.

John received his undergraduate degree from the University of Toledo and did post-graduate work at both the University of Toledo and Bowling Green State University.



# Cornhusker State Industries



**CORNHUSKER STATE INDUSTRIES**  
**800 PIONEERS BLVD.**  
**LINCOLN, NE 68502**  
**402-471-4597 OR 1-800-348-7537**

## CSI Management Team

John McGovern	Deputy Director/General Mgr.
Steve Neff	Assistant Administrator
Jim Brebner	Assistant Administrator
Mike Martin	Budget Officer III
Jeremy Elder	Manufacturing Manager
Kate Severin	Sales & Marketing Manager
Scott Roberts	Quality Assurance
Jim Oliver	Inventory Control
Paul Norrid	ACA/HR/Safety Manager
Diane Poppert	Warehouse Manager
Brad Frandsen	Federal Surplus Property Manager

### **CSI—WE BUILD OPPORTUNITY**

In FY2009, CSI completed initial phases of architectural design for the construction of new production buildings at OCC and TSCI. The expansion of these facilities will help CSI position itself to meet the challenges of future economic trends. CSI is also fortunate to be able to take advantage of the significant construction discounts offered by the current economic climate estimated at 20%. The expansion plans will help CSI offer more diversity in product lines such as park furniture and accessories; provide additional products and services to the department including canteen bags, sweats and foot lockers; and continue to pursue PIECP opportunities to provide real world working experience to a larger number of inmates. CSI employed an average of 554 inmates in FY2009 within traditional shops and private venture operations resulting in approximately 745,000 hours of inmate labor. Private venture contributions returned to the community in the form of state and local taxes, victim reparations, inmate room and board, family support, and release savings of almost \$498,000 in FY2009. CSI also processed nearly 6.5 million pounds of laundry for tax supported and non-profit end users.

As CSI entered FY2010, operations exploded with activity as production ran at full capacity in all four wood shops to keep up with the orders of a single customer; the Elmwood-Murdock Public School District. They placed furniture orders that exceeded \$500,000 to remodel their entire high school and elementary school campuses. It proved to be the largest single furniture order in CSI history. In addition, CSI broke ground at OCC for building expansion that is expected to be completed by the spring of 2010. At that time, ground breaking is anticipated to take place at TSCI for a similar expansion. In December 2009, our Digital License Plate shop began production for the roll out of the new 2011 plate designs that will replace the 2005 series plates on all motor vehicles registered in Nebraska. We expect to produce approximately 1.5 million plates in FY 2010 to be ready for the 01/01/2011 initial issue date. We anticipate that we will produce an additional 2 million plates throughout FY 2011 and in excess of 6 million plates over the entire 6-year cycle period.

This past summer, CSI was finally able to see efforts to offer medical transcription services come to fruition as the NCCW Data Entry Shop developed a partnership with the Beatrice State Development Center to provide transcription services. This new business effort promises to be an ever expanding service line for CSI into the future. As the calendar year ended, CSI added two additional work crew details that have been assigned to the Nebraska State Office Building. They will provide cleaning services at a great savings to the State.

CSI looks forward to partnering with the University of Nebraska-Lincoln on two important projects in the summer of 2010. The National Special Olympics are being hosted at the UNL campus in July. CSI will provide laundry services for the Special Olympics as well as the laundry for all of the traditional UNL summer programs. In addition, the NU Athletic department has contracted with CSI to manufacture 18,000 new portable stadium seats for Memorial Stadium that will attach to the bench seating throughout the stadium. These are scheduled to be produced and delivered in time for the first home game of the fall football season.

To further enhance the image of CSI to the expanding and varied customer base, staff and inmates installed new carpet throughout the Administration building. The large conference room continues to attract increasing interest and is being widely used as a multi-agency resource featuring fine CSI products throughout.

For more information about CSI's multiple product lines, programs, and history, please visit our showroom at 800 Pioneers Blvd, call us at 800-348-7537, or browse our website at [www.corrections.state.ne.us/csi](http://www.corrections.state.ne.us/csi)

## **Federal Surplus Property Brad Frandsen, Manager**

Federal Surplus Property's (FSP) purpose is to screen, receive, and distribute surplus property to eligible state and local government subdivisions and certain non-profit agencies. The FSP Manager is appointed by the Governor of the State of Nebraska to administer and coordinate the transfer of excess federal property to Law Enforcement Agencies within the State of Nebraska. Service charges received from eligible donees and Law Enforcement Agencies (LEA's) make FSP self-supporting through its revolving fund, while still providing significant tax savings to the donees & LEA's.

The Nebraska Department of Correctional Services, through Cornhusker State Industries (CSI), operates the agency's program.





## Statistical Summary

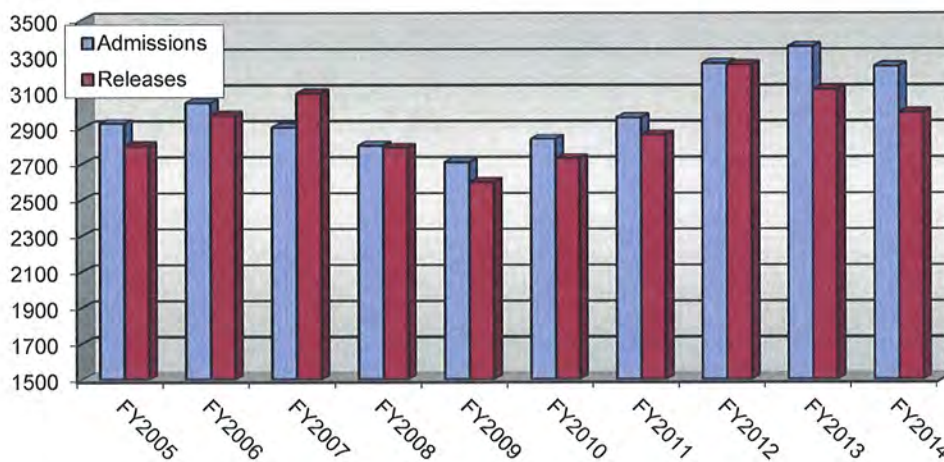
**Nebraska Department of Correctional Services**  
**Admissions and Releases**

**Total Admissions**

FY	New Sentenced			Revocations			Evaluator/Safekeeper/WEC			Grand Total
	Males	Females	Total	Males	Females	Total	Males	Females	Total	
2005	1774	309	2083	307	33	340	403	98	501	2924
2006	1992	336	2328	250	33	283	338	90	428	3039
2007	1871	308	2179	226	35	261	374	88	462	2902
2008	1845	306	2151	223	23	246	325	79	404	2801
2009	1815	253	2068	252	44	296	285	60	345	2709
2010	1954	283	2237	210	20	230	308	62	370	2837
2011	2055	316	2371	228	17	245	279	61	340	2956
2012	2189	319	2508	292	40	332	372	46	418	3258
2013	2267	308	2575	452	62	514	250	12	262	3351
2014	2137	356	2493	492	44	536	176	37	213	3242

**Total Releases**

FY	Paroled to Nebraska			Discharges			Evaluator/Safekeeper/WEC			Grand Total
	Males	Females	Total	Males	Females	Total	Males	Females	Total	
2005	953	133	1086	1079	150	1229	396	89	485	2800
2006	873	161	1034	1265	226	1491	353	91	444	2969
2007	1007	174	1181	1251	189	1440	374	97	471	3092
2008	842	186	1028	1171	176	1347	337	77	414	2789
2009	848	130	978	1104	174	1278	277	65	342	2598
2010	938	145	1083	1161	119	1280	295	61	366	2729
2011	1059	192	1251	1096	150	1246	301	63	364	2861
2012	1491	243	1734	998	123	1121	349	47	396	3251
2013	1479	285	1764	926	107	1033	294	22	316	3113
2014	1411	245	1656	985	116	1101	197	31	228	2985



**Average Monthly Population (Fiscal Year)**

Facility	2005	2006	2007	2008	2009	2010	2011	2012	2013	2014
Nebraska State Penitentiary	1149	1163	1140	1141	1066	1108	1155	1226	1261	1311
Lincoln Correctional Center	481	493	492	472	475	486	490	491	499	496
Diagnostic & Evaluation Unit	281	390	354	334	302	358	375	440	484	438
Omaha Correctional Center	588	562	595	616	680	656	605	559	584	747
Community Corrections	425	491	547	540	537	528	524	516	531	515
NE Correctional Youth Facility	78	97	94	85	98	91	90	74	66	71
Nebraska Center for Women	281	311	318	294	273	265	281	265	242	291
Tecumseh State Correctional Institution	801	853	858	906	948	925	943	936	955	1002
<b>Total Average Monthly Population</b>	<b>4086</b>	<b>4360</b>	<b>4398</b>	<b>4388</b>	<b>4379</b>	<b>4417</b>	<b>4463</b>	<b>4507</b>	<b>4622</b>	<b>4871</b>
% Change	+1.0%	+6.3%	+0.9%	-0.2%	-0.2%	+0.9%	+0.9%	+1.0%	+2.6%	+5.4%
Re-Entry Furlough Program					2	6	40	128	86	69
Work Ethic Camp	75	75	70	79	103	126	166	168	137	154
Adult Parole	767	710	754	822	913	962	973	1172	1379	1450
<b>Total</b>	<b>4928</b>	<b>5145</b>	<b>5222</b>	<b>5289</b>	<b>5397</b>	<b>5475</b>	<b>5642</b>	<b>5975</b>	<b>6224</b>	<b>6544</b>
% Change	-0.2%	+4.4%	+1.5%	+1.3%	+2.0%	+1.4%	+3.1%	+5.9%	+4.2%	+5.1%

## Adult Female Total Population - FY2014 Statistical Reports

### Current Age

Age	Number	Percent	Cumulative Number	Cumulative Percent
19	2	0.5%	2	0.5%
20 - 24	51	12.9%	53	13.5%
25 - 29	87	22.1%	140	35.5%
30 - 34	63	16.0%	203	51.5%
35 - 39	53	13.5%	256	65.0%
40 - 44	44	11.2%	300	76.1%
45 - 49	43	10.9%	343	87.1%
50 - 54	23	5.8%	366	92.9%
55 - 59	18	4.6%	384	97.5%
60 and Over	10	2.5%	394	100.0%

### Average Age

Current Age	# of Inmates
33.75	394

### Race

Race	Number	Percent
White	257	65.2%
Black	65	16.5%
Hispanic	37	9.4%
Native American	26	6.6%
Other	8	2.0%
Asian	1	0.3%
<b>Grand Total</b>	<b>394</b>	<b>100.0%</b>

### Commitment Area

Region	Number	Percent
Metro Omaha	140	35.5%
Metro Lincoln	85	21.6%
Southeast	29	7.4%
Northeast	54	13.7%
South Central	57	14.5%
North Central	7	1.8%
Panhandle	18	4.6%
Out of State	4	1.0%
<b>Grand Total</b>	<b>394</b>	<b>100.0%</b>

### Current Custody

Custody	Number	Percent	Cumulative Number	Cumulative Percent
MAX - Restricted	74	18.8%	74	18.8%
MED - Restricted	87	22.1%	161	40.9%
MIN - Dir Con Supr	118	29.9%	279	70.8%
MIN - Intrmt Supr	1	0.3%	280	71.1%
COMM - Detail	82	20.8%	362	91.9%
COMM - Work/Ed Rls	32	8.1%	394	100.0%

### Record Center

Record Center	Number	Percent
NCW	298	75.6%
CCL	73	18.5%
CCO	23	5.8%
<b>Grand Total</b>	<b>394</b>	<b>100.0%</b>

### Admission Type

Admission Type	Number	Percent
First-Time	291	73.9%
Multiple	99	25.1%
Interstate Trans	4	1.0%
<b>Grand Total</b>	<b>394</b>	<b>100.0%</b>

### Jurisdiction

Jurisdiction	Number	Percent
Nebraska	390	99.0%
Interstate Transfer	4	1.0%
<b>Grand Total</b>	<b>394</b>	<b>100.0%</b>

### Re-Entry Furlough Program

Record Center	Number	Percent
CCL	11	64.7%
CCO	6	35.3%
<b>Grand Total</b>	<b>17</b>	<b>100.0%</b>

## Adult Female Total Population - FY2014 Statistical Reports

### Previous Parole

Parole	Number	Percent
NO	391	99.2%
YES	3	0.8%
<b>Grand Total</b>	<b>394</b>	<b>100.0%</b>

### Marital Status

Marital Status	Number	Percent
SINGLE	200	50.8%
MARRIED	103	26.1%
DIVORCED	66	16.8%
SEPARATED	9	2.3%
WIDOWED	9	2.3%
DATA UNAVAILABLE	7	1.8%
<b>Grand Total</b>	<b>394</b>	<b>100.0%</b>

### Religion

Religion	Number	Percent
CHRISTIAN	98	24.9%
CATHOLIC	75	19.0%
WICCAN	42	10.7%
ISLAM/MUSLIM	25	6.3%
BAPTIST	24	6.1%
NONE	19	4.8%
LUTHERAN	18	4.6%
METHODIST	10	2.5%
NATIVE AMERICAN	9	2.3%
MUSLIM/ISLAM	7	1.8%
PROTESTANT	7	1.8%
JEHOVAHS WITNESS	3	0.8%
PENTECOSTAL	3	0.8%
ASSEMBLY OF GOD	1	0.3%
EPISCOPAL	1	0.3%
MA'AT	1	0.3%
MORMON/LDS	1	0.3%
PRESBYTERIAN	1	0.3%
SEVENTH DAY ADVENT	1	0.3%
UCC	1	0.3%
UNITARIAN	1	0.3%
Unknown	46	11.7%
<b>Grand Total</b>	<b>394</b>	<b>100.0%</b>

### Avg Min & Max Sentence

(Life set to 10-year average of 21.34 Yrs)

Avg MIN Sentence Mo's	Avg MAX Sentence Mo's	# of Inmates
85.57	126.13	394

## Adult Female Total Population - FY2014 Statistical Reports

### Most Serious Offense

Offense Arrest	Number	Percent
MANU/DIST/DEL/DISP OR POSS W/I	64	16.2%
POS CNTRL SUB EXCEPT MARIJUANA	52	13.2%
FORGERY 2ND DEGREE	26	6.6%
BURGLARY	25	6.3%
CHILD ABUSE	21	5.3%
THEFT BY SHOPLIFTING	19	4.8%
ROBBERY	13	3.3%
THEFT BY UNLWFL TAKING OR DISP	13	3.3%
THEFT BY DECEPTION	13	3.3%
THEFT BY RECEIVING STOLEN PROP	11	2.8%
DRIVING UNDER INFLUENCE/INJURY	11	2.8%
MURDER 1ST DEGREE	10	2.5%
MURDER 2ND DEGREE	9	2.3%
ASSAULT 2ND DEGREE	8	2.0%
SEXUAL ASSULT OF CHILD 1ST DEG	8	2.0%
ACCESSORY TO A FELONY	7	1.8%
MANSLAUGHTER	7	1.8%
VIOL OF FINANCIAL TRANS DEVICE	7	1.8%
CRIMINAL IMPERSONATION	6	1.5%
TERRORISTIC THREATS	5	1.3%
POSS DEADLY WEAP BY FELON/FUG	5	1.3%
DRIVING UNDER REVOKED LICENSE	5	1.3%
MOTOR VEHICLE HOMICIDE	4	1.0%
ASSAULT 1ST DEGREE	4	1.0%
OPERATE MOTOR VEH/AVOID ARREST	4	1.0%
LEAVE SCENE OF INJURY ACCIDENT	4	1.0%
DOMESTIC ASSAULT	3	0.8%
AQUIRING CONT SUBSTNC BY FRAUD	2	0.5%
FORGERY 1ST DEGREE	2	0.5%
FAILURE TO APPEAR	2	0.5%
DRIVING WHILE INTOXICATED	2	0.5%
CRIMINAL ATTEMPT	1	0.3%
CONSPIRACY	1	0.3%
SEXUAL ASSAULT 1ST DEGREE	1	0.3%
SEXUAL ASSAULT ON A CHILD	1	0.3%
KIDNAPPING	1	0.3%
DLNG NARCOTICS/CNTRL SUBSTANCE	1	0.3%
ARSON 1ST DEGREE	1	0.3%
ARSON 2ND DEGREE	1	0.3%
THEFT	1	0.3%
NO ACCNT CHK/BAD CHK LESS \$75	1	0.3%
OBSTRUCTING A PEACE OFFICER	1	0.3%
ESCAPE	1	0.3%
TAMPERING	1	0.3%
ASLT PEAC OFCR/DCS EMP 1ST DGR	1	0.3%
ASLT PEAC OFCR/DCS EMP 3RD DGR	1	0.3%
ASSAULT BY A CONFINED PERSON	1	0.3%
CARRY/POSS CONCEALED WEAPON	1	0.3%
USE FIREARM TO COMMIT FELONY	1	0.3%
POS FIREARM BY FUGITIVE/FELON	1	0.3%
UNLAWFUL DISCHARGE OF FIREARM	1	0.3%
POSS/RECEIVE STOLEN FIREARM	1	0.3%
USE DEADLY WEAP TO COMMIT FEL	1	0.3%
<b>Grand Total</b>	<b>394</b>	<b>100.0%</b>

### Most Serious Offense Category

MSO Group	Number	Percent
Drugs	119	30.2%
Theft	57	14.5%
Assault	44	11.2%
Fraud	42	10.7%
Motor Vehicle	30	7.6%
Homicide	26	6.6%
Burglary	25	6.3%
Other	14	3.6%
Robbery	13	3.3%
Weapons	11	2.8%
Sex Offenses	10	2.5%
Arson	2	0.5%
Restraint	1	0.3%
<b>Grand Total</b>	<b>394</b>	<b>100.0%</b>

## Adult Female Total Population - FY2014 Statistical Reports

### Minimum Sentence

Years	Number	Percent	Cumulative Number	Cumulative Percent
1.00 Yr or Less	33	8.4%	33	8.4%
1.01-2.00 Yrs	117	29.7%	150	38.1%
2.01-3.00 Yrs	55	14.0%	205	52.0%
3.01-4.00 Yrs	43	10.9%	248	62.9%
4.01-5.00 Yrs	36	9.1%	284	72.1%
5.01-6.00 Yrs	12	3.0%	296	75.1%
6.01-7.00 Yrs	4	1.0%	300	76.1%
7.01-8.00 Yrs	11	2.8%	311	78.9%
8.01-9.00 Yrs	2	0.5%	313	79.4%
9.01-10.00 Yrs	12	3.0%	325	82.5%
10.01-11.00 Yrs	1	0.3%	326	82.7%
11.01-12.00 Yrs	5	1.3%	331	84.0%
12.01-13.00 Yrs	3	0.8%	334	84.8%
13.01-14.00 Yrs	1	0.3%	335	85.0%
14.01-15.00 Yrs	6	1.5%	341	86.5%
15.01-16.00 Yrs	3	0.8%	344	87.3%
17.01-18.00 Yrs	4	1.0%	348	88.3%
18.01-19.00 Yrs	2	0.5%	350	88.8%
19.01-20.00 Yrs	6	1.5%	356	90.4%
Over 20 Years	27	6.9%	383	97.2%
Life	11	2.8%	394	100.0%

### Maximum Sentence

Years	Number	Percent	Cumulative Number	Cumulative Percent
1.00 Yr or Less	19	4.8%	19	4.8%
1.01-2.00 Yrs	25	6.3%	44	11.2%
2.01-3.00 Yrs	48	12.2%	92	23.4%
3.01-4.00 Yrs	43	10.9%	135	34.3%
4.01-5.00 Yrs	60	15.2%	195	49.5%
5.01-6.00 Yrs	33	8.4%	228	57.9%
6.01-7.00 Yrs	17	4.3%	245	62.2%
7.01-8.00 Yrs	20	5.1%	265	67.3%
8.01-9.00 Yrs	9	2.3%	274	69.5%
9.01-10.00 Yrs	22	5.6%	296	75.1%
10.01-11.00 Yrs	4	1.0%	300	76.1%
11.01-12.00 Yrs	9	2.3%	309	78.4%
12.01-13.00 Yrs	3	0.8%	312	79.2%
13.01-14.00 Yrs	2	0.5%	314	79.7%
14.01-15.00 Yrs	1	0.3%	315	79.9%
15.01-16.00 Yrs	5	1.3%	320	81.2%
16.01-17.00 Yrs	1	0.3%	321	81.5%
17.01-18.00 Yrs	3	0.8%	324	82.2%
19.01-20.00 Yrs	14	3.6%	338	85.8%
Over 20 Years	44	11.2%	382	97.0%
Life	12	3.0%	394	100.0%

## Adult Male Total Population - FY2014 Statistical Reports

### Current Age

Age	Number	Percent	Cumulative Number	Cumulative Percent
17	6	0.1%	6	0.1%
18	15	0.3%	21	0.4%
19	30	0.6%	51	1.1%
20 - 24	641	13.6%	692	14.6%
25 - 29	806	17.1%	1498	31.7%
30 - 34	734	15.5%	2232	47.2%
35 - 39	656	13.9%	2888	61.1%
40 - 44	532	11.3%	3420	72.4%
45 - 49	414	8.8%	3834	81.1%
50 - 54	391	8.3%	4225	89.4%
55 - 59	253	5.4%	4478	94.8%
60 and Over	247	5.2%	4725	100.0%

### Average Age

Current Age	# of Inmates
35.07	4725

### Race

Race	Number	Percent
White	2623	55.5%
Black	1284	27.2%
Hispanic	563	11.9%
Native American	188	4.0%
Asian	31	0.7%
Data Unavailable	18	0.4%
Other	16	0.3%
Hawaiian / Pacific Islander	2	0.0%
<b>Grand Total</b>	<b>4725</b>	<b>100.0%</b>

### Commitment Area

Region	Number	Percent
Metro Omaha	1878	39.7%
Metro Lincoln	881	18.6%
Southeast	425	9.0%
Northeast	533	11.3%
South Central	679	14.4%
North Central	51	1.1%
Panhandle	241	5.1%
Out of State	16	0.3%
Data Unavailable	21	0.4%
<b>Grand Total</b>	<b>4725</b>	<b>100.0%</b>

### Current Custody

Custody	Number	Percent	Cumulative Number	Cumulative Percent
MAX - Restricted	1691	35.8%	1691	35.8%
MED - Restricted	1099	23.3%	2790	59.0%
MIN - Dir Con Supr	1248	26.4%	4038	85.5%
MIN - Intrmt Supr	194	4.1%	4232	89.6%
COMM - Detail	290	6.1%	4522	95.7%
COMM - Work/Ed Rls	203	4.3%	4725	100.0%

### Record Center

Record Center	Number	Percent	Cumulative Number	Cumulative Percent
NSP	1318	27.9%	1318	27.9%
TSC	1034	21.9%	2352	49.8%
OCC	738	15.6%	3090	65.4%
LCC	497	10.5%	3587	75.9%
DEC	435	9.2%	4022	85.1%
CCL	296	6.3%	4318	91.4%
WEC	186	3.9%	4504	95.3%
CCO	140	3.0%	4644	98.3%
NCY	81	1.7%	4725	100.0%

### Admission Type

Admission Type	Number	Percent
First-Time	2945	62.3%
Multiple	1759	37.2%
Interstate Trans	16	0.3%
Unavailable	5	0.1%
<b>Grand Total</b>	<b>4725</b>	<b>100.0%</b>

### Jurisdiction

Jurisdiction	Number	Percent
Nebraska	4708	99.6%
Interstate Transfer	17	0.4%
<b>Grand Total</b>	<b>4725</b>	<b>100.0%</b>

### Re-Entry Furlough Program

Record Center	Number	Percent
CCL	23	67.6%
CCO	11	32.4%
<b>Grand Total</b>	<b>34</b>	<b>100.0%</b>



## Adult Male Total Population - FY2014 Statistical Reports

### Previous Parole

Parole	Number	Percent
NO	4608	97.5%
YES	117	2.5%
<b>Grand Total</b>	<b>4725</b>	<b>100.0%</b>

### Marital Status

Marital Status	Number	Percent
SINGLE	2834	60.0%
MARRIED	1092	23.1%
DIVORCED	728	15.4%
WIDOWED	36	0.8%
DATA UNAVAILABLE	33	0.7%
SEPARATED	2	0.0%
<b>Grand Total</b>	<b>4725</b>	<b>100.0%</b>

### Most Serious Offense Category

MSO Group	Number	Percent
Sex Offenses	938	19.9%
Assault	578	12.2%
Homicide	549	11.6%
Drugs	530	11.2%
Weapons	428	9.1%
Robbery	423	9.0%
Theft	350	7.4%
Burglary	341	7.2%
Motor Vehicle	302	6.4%
Other	99	2.1%
Fraud	80	1.7%
Restraint	54	1.1%
Arson	27	0.6%
Morals	26	0.6%
<b>Grand Total</b>	<b>4725</b>	<b>100.0%</b>

### Avg Min & Max Sentence

(Life set to 10-year average of 21.34 Yrs)

Avg MIN Sentence Mo's	Avg MAX Sentence Mo's	# of Inmates
166.37	239.69	4725

## Adult Male Total Population - FY2014 Statistical Reports

### Minimum Sentence

Years	Number	Percent	Cumulative Number	Cumulative Percent
1.00 Yr or Less	222	4.7%	222	4.7%
1.01-2.00 Yrs	630	13.3%	852	18.0%
2.01-3.00 Yrs	396	8.4%	1248	26.4%
3.01-4.00 Yrs	369	7.8%	1617	34.2%
4.01-5.00 Yrs	301	6.4%	1918	40.6%
5.01-6.00 Yrs	228	4.8%	2146	45.4%
6.01-7.00 Yrs	121	2.6%	2267	48.0%
7.01-8.00 Yrs	180	3.8%	2447	51.8%
8.01-9.00 Yrs	59	1.2%	2506	53.0%
9.01-10.00 Yrs	355	7.5%	2861	60.6%
10.01-11.00 Yrs	39	0.8%	2900	61.4%
11.01-12.00 Yrs	118	2.5%	3018	63.9%
12.01-13.00 Yrs	33	0.7%	3051	64.6%
13.01-14.00 Yrs	62	1.3%	3113	65.9%
14.01-15.00 Yrs	152	3.2%	3265	69.1%
15.01-16.00 Yrs	55	1.2%	3320	70.3%
16.01-17.00 Yrs	37	0.8%	3357	71.0%
17.01-18.00 Yrs	70	1.5%	3427	72.5%
18.01-19.00 Yrs	15	0.3%	3442	72.8%
19.01-20.00 Yrs	232	4.9%	3674	77.8%
Over 20 Years	794	16.8%	4468	94.6%
Life	246	5.2%	4714	99.8%
Death	11	0.2%	4725	100.0%

### Maximum Sentence

Years	Number	Percent	Cumulative Number	Cumulative Percent
1.00 Yr or Less	86	1.8%	86	1.8%
1.01-2.00 Yrs	133	2.8%	219	4.6%
2.01-3.00 Yrs	243	5.1%	462	9.8%
3.01-4.00 Yrs	260	5.5%	722	15.3%
4.01-5.00 Yrs	482	10.2%	1204	25.5%
5.01-6.00 Yrs	233	4.9%	1437	30.4%
6.01-7.00 Yrs	121	2.6%	1558	33.0%
7.01-8.00 Yrs	216	4.6%	1774	37.5%
8.01-9.00 Yrs	79	1.7%	1853	39.2%
9.01-10.00 Yrs	358	7.6%	2211	46.8%
10.01-11.00 Yrs	38	0.8%	2249	47.6%
11.01-12.00 Yrs	177	3.7%	2426	51.3%
12.01-13.00 Yrs	34	0.7%	2460	52.1%
13.01-14.00 Yrs	65	1.4%	2525	53.4%
14.01-15.00 Yrs	164	3.5%	2689	56.9%
15.01-16.00 Yrs	59	1.2%	2748	58.2%
16.01-17.00 Yrs	28	0.6%	2776	58.8%
17.01-18.00 Yrs	52	1.1%	2828	59.9%
18.01-19.00 Yrs	18	0.4%	2846	60.2%
19.01-20.00 Yrs	295	6.2%	3141	66.5%
Over 20 Years	1241	26.3%	4382	92.7%
Life	332	7.0%	4714	99.8%
Death	11	0.2%	4725	100.0%

## Parole Population - FY2014 Statistical Reports

### Current Age

(Includes 17 parolees inside pending either revocation or parole.)

Age	Number	Percent	Cumulative Number	Cumulative Percent
18	1	0.1%	1	0.1%
19	2	0.1%	3	0.2%
20 - 24	120	8.8%	123	9.0%
25 - 29	224	16.5%	347	25.5%
30 - 34	235	17.3%	582	42.8%
35 - 39	185	13.6%	767	56.4%
40 - 44	161	11.8%	928	68.2%
45 - 49	137	10.1%	1065	78.3%
50 - 54	127	9.3%	1192	87.6%
55 - 59	84	6.2%	1276	93.8%
60 and Over	84	6.2%	1360	100.0%

### Average Age

(Includes 17 parolees inside pending either revocation or parole.)

Current Age	# of Parolees
36.85	1360

### Race

(Includes 17 parolees inside pending either revocation or parole.)

Race	Number	Percent
WHITE	851	62.6%
BLACK	294	21.6%
HISPANIC	145	10.7%
NATIVE AMERICAN	53	3.9%
ASIAN	9	0.7%
OTHER	6	0.4%
DATA UNAVAILABLE	2	0.1%
<b>Grand Total</b>	<b>1360</b>	<b>100.0%</b>

### Parole Indicator

(Includes 17 parolees inside pending either revocation or parole.)

In Out Codes	Number	Percent
Nebraska Parolee in Nebraska	949	69.8%
Interstate Transfers	204	15.0%
Nebraska Paroles to Other States	110	8.1%
Nebraska Paroled to Detainers	97	7.1%
<b>Grand Total</b>	<b>1360</b>	<b>100.0%</b>

### Previous Parole

(Includes 17 parolees inside pending either revocation or parole.)

Parole	Number	Percent
NO	1323	97.3%
YES	37	2.7%
<b>Grand Total</b>	<b>1360</b>	<b>100.0%</b>

### Admission Type

(Includes 17 parolees inside pending either revocation or parole.)

Admission Type	Number	Percent
First-Time	738	54.3%
Multiple	418	30.7%
Interstate Trans	204	15.0%
<b>Grand Total</b>	<b>1360</b>	<b>100.0%</b>

### Gender

(Includes 17 parolees inside pending either revocation or parole.)

Gender	Number	Percent
Female	212	15.6%
Male	1148	84.4%
<b>Grand Total</b>	<b>1360</b>	<b>100.0%</b>

## Parole Population - FY2014 Statistical Reports

### Most Serious Offense Category

(Includes 17 parolees inside pending either revocation or parole.)

MSO Group	Number	Percent
Drugs	351	25.8%
Theft	151	11.1%
Motor Vehicle	148	10.9%
Burglary	128	9.4%
Sex Offenses	121	8.9%
Robbery	114	8.4%
Assault	111	8.2%
Homicide	78	5.7%
Weapons	53	3.9%
Fraud	52	3.8%
Other	38	2.8%
Arson	7	0.5%
Restraint	5	0.4%
Morals	3	0.2%
<b>Grand Total</b>	<b>1360</b>	<b>100.0%</b>

### Commitment Area

(Includes 17 parolees inside pending either revocation or parole.)

Region	Number	Percent
Metro Omaha	391	28.8%
Metro Lincoln	250	18.4%
Southeast	107	7.9%
Northeast	144	10.6%
South Central	187	13.8%
North Central	19	1.4%
Panhandle	57	4.2%
Out of State	170	12.5%
Data Unavailable	35	2.6%
<b>Grand Total</b>	<b>1360</b>	<b>100.0%</b>

## Parole Population - FY2014 Statistical Reports

### Minimum Sentence

(Includes 17 parolees inside pending either revocation or parole.)

Years	Number	Percent	Cumulative Number	Cumulative Percent
1 Yr or Less	18	1.3%	18	1.3%
1.01-2.00 Yrs	287	21.1%	305	22.4%
2.01-3.00 Yrs	158	11.6%	463	34.0%
3.01-4.00 Yrs	164	12.1%	627	46.1%
4.01-5.00 Yrs	99	7.3%	726	53.4%
5.01-6.00 Yrs	110	8.1%	836	61.5%
6.01-7.00 Yrs	83	6.1%	919	67.6%
7.01-8.00 Yrs	39	2.9%	958	70.4%
8.01-9.00 Yrs	58	4.3%	1016	74.7%
9.01-10.00 Yrs	26	1.9%	1042	76.6%
10.01-11.00 Yrs	95	7.0%	1137	83.6%
11.01-12.00 Yrs	12	0.9%	1149	84.5%
12.01-13.00 Yrs	24	1.8%	1173	86.3%
13.01-14.00 Yrs	11	0.8%	1184	87.1%
14.01-15.00 Yrs	16	1.2%	1200	88.2%
15.01-16.00 Yrs	36	2.6%	1236	90.9%
16.01-17.00 Yrs	10	0.7%	1246	91.6%
17.01-18.00 Yrs	6	0.4%	1252	92.1%
18.01-19.00 Yrs	8	0.6%	1260	92.6%
19.01-20.00 Yrs	3	0.2%	1263	92.9%
20+ Years	90	6.6%	1353	99.5%
Life	7	0.5%	1360	100.0%

### Maximum Sentence

(Includes 17 parolees inside pending either revocation or parole.)

Years	Number	Percent	Cumulative Number	Cumulative Percent
1 Yr or Less	7	0.5%	7	0.5%
1.01-2.00 Yrs	14	1.0%	21	1.5%
2.01-3.00 Yrs	61	4.5%	82	6.0%
3.01-4.00 Yrs	133	9.8%	215	15.8%
4.01-5.00 Yrs	115	8.5%	330	24.3%
5.01-6.00 Yrs	191	14.0%	521	38.3%
6.01-7.00 Yrs	96	7.1%	617	45.4%
7.01-8.00 Yrs	42	3.1%	659	48.5%
8.01-9.00 Yrs	71	5.2%	730	53.7%
9.01-10.00 Yrs	34	2.5%	764	56.2%
10.01-11.00 Yrs	119	8.8%	883	64.9%
11.01-12.00 Yrs	29	2.1%	912	67.1%
12.01-13.00 Yrs	51	3.8%	963	70.8%
13.01-14.00 Yrs	7	0.5%	970	71.3%
14.01-15.00 Yrs	18	1.3%	988	72.6%
15.01-16.00 Yrs	53	3.9%	1041	76.5%
16.01-17.00 Yrs	23	1.7%	1064	78.2%
17.01-18.00 Yrs	11	0.8%	1075	79.0%
18.01-19.00 Yrs	13	1.0%	1088	80.0%
19.01-20.00 Yrs	7	0.5%	1095	80.5%
20+ Years	222	16.3%	1317	96.8%
Life	43	3.2%	1360	100.0%

## New Sentenced Admissions - FY2014 Statistical Reports

### Age at Admission

Age	Number	Percent	Cumulative Number	Cumulative Percent
15	3	0.1%	3	0.1%
16	8	0.3%	11	0.4%
17	20	0.8%	31	1.2%
18	50	2.0%	81	3.2%
19	78	3.1%	159	6.4%
20 - 24	479	19.2%	638	25.6%
25 - 29	472	18.9%	1110	44.5%
30 - 34	414	16.6%	1524	61.1%
35 - 39	283	11.4%	1807	72.5%
40 - 44	217	8.7%	2024	81.2%
45 - 49	216	8.7%	2240	89.9%
50 - 54	137	5.5%	2377	95.3%
55 - 59	68	2.7%	2445	98.1%
60 and Over	48	1.9%	2493	100.0%

### Average Age at Admission

Gender	Age at Admission	# of Inmates
Male	33.58	2137
Female	34.99	356
<b>Grand Total</b>	<b>33.78</b>	<b>2493</b>

### Race

Race	Number	Percent
White	1483	59.5%
Black	566	22.7%
Hispanic	279	11.2%
Native American	112	4.5%
Data Unavailable	23	0.9%
Other	18	0.7%
Asian	11	0.4%
Hawaiian / Pacific Islander	1	0.0%
<b>Grand Total</b>	<b>2493</b>	<b>100.0%</b>

### Gender

Gender	Number	Percent
Male	2137	85.7%
Female	356	14.3%
<b>Grand Total</b>	<b>2493</b>	<b>100.0%</b>

### Admission Type

Admission Type	Number	Percent
First-Time	1686	67.6%
Multiple	798	32.0%
Unavailable	9	0.4%
<b>Grand Total</b>	<b>2493</b>	<b>100.0%</b>

### Admissions By Month

Month/Year	Number	Percent
2013/07	210	8.4%
2013/08	201	8.1%
2013/09	208	8.3%
2013/10	213	8.5%
2013/11	211	8.5%
2013/12	190	7.6%
2014/01	217	8.7%
2014/02	219	8.8%
2014/03	183	7.3%
2014/04	221	8.9%
2014/05	214	8.6%
2014/06	206	8.3%
<b>Grand Total</b>	<b>2493</b>	<b>100.0%</b>

### Avg Min & Max Sentence

(Life set to 10-year average of 21.34 Yrs)

Avg MIN Sentence Mo's	Avg MAX Sentence Mo's	# of Inmates
50.59	79.36	2493

## New Sentenced Admissions - FY2014 Statistical Reports

### Most Serious Offense Category - Females

MSO Group	Number	Percent
Drugs	137	38.5%
Theft	74	20.8%
Fraud	32	9.0%
Motor Vehicle	31	8.7%
Assault	30	8.4%
Other	18	5.1%
Burglary	14	3.9%
Weapons	9	2.5%
Robbery	7	2.0%
Homicide	2	0.6%
Sex Offenses	2	0.6%
<b>Grand Total</b>	<b>356</b>	<b>100.0%</b>

### Most Serious Offense Category - Total

MSO Group	Number	Percent
Drugs	552	22.1%
Assault	349	14.0%
Theft	337	13.5%
Motor Vehicle	292	11.7%
Weapons	202	8.1%
Burglary	197	7.9%
Sex Offenses	196	7.9%
Robbery	104	4.2%
Fraud	98	3.9%
Other	98	3.9%
Homicide	34	1.4%
Restraint	12	0.5%
Arson	10	0.4%
Morals	10	0.4%
Data Unavailable	1	0.0%
<b>Grand Total</b>	<b>2493</b>	<b>100.0%</b>

### Commitment Area - Females

Region	Number	Percent
Metro Omaha	140	39.3%
Metro Lincoln	64	18.0%
Southeast	24	6.7%
Northeast	60	16.9%
South Central	50	14.0%
North Central	3	0.8%
Panhandle	15	4.2%
<b>Grand Total</b>	<b>356</b>	<b>100.0%</b>

### Most Serious Offense Category - Males

MSO Group	Number	Percent
Drugs	415	19.4%
Assault	319	14.9%
Theft	263	12.3%
Motor Vehicle	261	12.2%
Sex Offenses	194	9.1%
Weapons	193	9.0%
Burglary	183	8.6%
Robbery	97	4.5%
Other	80	3.7%
Fraud	66	3.1%
Homicide	32	1.5%
Restraint	12	0.6%
Arson	10	0.5%
Morals	10	0.5%
Data Unavailable	1	0.0%
<b>Grand Total</b>	<b>2137</b>	<b>100.0%</b>

### Commitment Area - Total

Region	Number	Percent
Metro Omaha	1022	41.0%
Metro Lincoln	426	17.1%
Southeast	224	9.0%
Northeast	364	14.6%
South Central	304	12.2%
North Central	30	1.2%
Panhandle	104	4.2%
Data Unavailable	19	0.8%
<b>Grand Total</b>	<b>2493</b>	<b>100.0%</b>

### Commitment Area - Males

Region	Number	Percent
Metro Omaha	882	41.3%
Metro Lincoln	362	16.9%
Southeast	200	9.4%
Northeast	304	14.2%
South Central	254	11.9%
North Central	27	1.3%
Panhandle	89	4.2%
Data Unavailable	19	0.9%
<b>Grand Total</b>	<b>2137</b>	<b>100.0%</b>

## New Sentenced Admissions - FY2014 Statistical Reports

### Minimum Sentence

Years	Number	Percent	Cumulative Number	Cumulative Percent
1.00 Yr or Less	643	25.8%	643	25.8%
1.01-2.00 Yrs	842	33.8%	1485	59.6%
2.01-3.00 Yrs	289	11.6%	1774	71.2%
3.01-4.00 Yrs	190	7.6%	1964	78.8%
4.01-5.00 Yrs	126	5.1%	2090	83.8%
5.01-6.00 Yrs	79	3.2%	2169	87.0%
6.01-7.00 Yrs	30	1.2%	2199	88.2%
7.01-8.00 Yrs	43	1.7%	2242	89.9%
8.01-9.00 Yrs	14	0.6%	2256	90.5%
9.01-10.00 Yrs	52	2.1%	2308	92.6%
10.01-11.00 Yrs	8	0.3%	2316	92.9%
11.01-12.00 Yrs	15	0.6%	2331	93.5%
12.01-13.00 Yrs	3	0.1%	2334	93.6%
13.01-14.00 Yrs	8	0.3%	2342	93.9%
14.01-15.00 Yrs	22	0.9%	2364	94.8%
15.01-16.00 Yrs	5	0.2%	2369	95.0%
16.01-17.00 Yrs	4	0.2%	2373	95.2%
17.01-18.00 Yrs	5	0.2%	2378	95.4%
18.01-19.00 Yrs	2	0.1%	2380	95.5%
19.01-20.00 Yrs	25	1.0%	2405	96.5%
Over 20 Years	71	2.8%	2476	99.3%
Life	17	0.7%	2493	100.0%

### Maximum Sentence

Years	Number	Percent	Cumulative Number	Cumulative Percent
1.00 Yr or Less	362	14.5%	362	14.5%
1.01-2.00 Yrs	356	14.3%	718	28.8%
2.01-3.00 Yrs	378	15.2%	1096	44.0%
3.01-4.00 Yrs	289	11.6%	1385	55.6%
4.01-5.00 Yrs	367	14.7%	1752	70.3%
5.01-6.00 Yrs	145	5.8%	1897	76.1%
6.01-7.00 Yrs	63	2.5%	1960	78.6%
7.01-8.00 Yrs	95	3.8%	2055	82.4%
8.01-9.00 Yrs	30	1.2%	2085	83.6%
9.01-10.00 Yrs	91	3.7%	2176	87.3%
10.01-11.00 Yrs	15	0.6%	2191	87.9%
11.01-12.00 Yrs	51	2.0%	2242	89.9%
12.01-13.00 Yrs	7	0.3%	2249	90.2%
13.01-14.00 Yrs	19	0.8%	2268	91.0%
14.01-15.00 Yrs	26	1.0%	2294	92.0%
15.01-16.00 Yrs	9	0.4%	2303	92.4%
16.01-17.00 Yrs	6	0.2%	2309	92.6%
17.01-18.00 Yrs	14	0.6%	2323	93.2%
18.01-19.00 Yrs	2	0.1%	2325	93.3%
19.01-20.00 Yrs	36	1.4%	2361	94.7%
Over 20 Years	113	4.5%	2474	99.2%
Life	19	0.8%	2493	100.0%



## Revocations Admissions - FY2014 Statistical Reports

### Age at Admission

Age	Number	Percent	Cumulative Number	Cumulative Percent
15	1	0.2%	1	0.2%
16	2	0.4%	3	0.6%
17	9	1.7%	12	2.2%
18	13	2.5%	25	4.7%
19	28	5.4%	53	9.9%
20 - 24	123	23.2%	176	32.8%
25 - 29	85	15.4%	261	48.7%
30 - 34	84	15.7%	345	64.4%
35 - 39	61	11.3%	406	75.7%
40 - 44	60	11.3%	466	86.9%
45 - 49	43	8.1%	509	95.0%
50 - 54	18	3.3%	527	98.3%
55 - 59	7	1.3%	534	99.6%
60 and Over	2	0.2%	536	100.0%

### Average Age at Admission

Age at Admission	# of Revokees
31.88	536

### Gender

Gender	Number	Percent
Female	44	8.2%
Male	492	91.8%
<b>Grand Total</b>	<b>536</b>	<b>100.0%</b>

### Race

Race	Number	Percent
ASIAN	6	1.1%
BLACK	137	25.6%
HISPANIC	34	6.3%
NATIVE AMERICAN	30	5.6%
OTHER	3	0.6%
UNKNOWN	1	0.2%
WHITE	325	60.6%
<b>Grand Total</b>	<b>536</b>	<b>100.0%</b>

### Admission Status

Status	Number	Percent
First - Time	278	52.2%
Multiple	258	47.8%
<b>Grand Total</b>	<b>536</b>	<b>100.0%</b>

### Parole Year / Month

Parole Dt	Number	Percent
2010/01	1	0.2%
2010/08	1	0.2%
2010/12	2	0.4%
2011/01	1	0.2%
2011/03	1	0.2%
2011/04	2	0.4%
2011/05	1	0.2%
2011/07	1	0.2%
2011/08	1	0.2%
2011/09	4	0.7%
2011/10	1	0.2%
2011/11	1	0.2%
2011/12	1	0.2%
2012/01	1	0.2%
2012/03	2	0.4%
2012/04	6	1.1%
2012/05	4	0.7%
2012/06	5	0.9%
2012/07	3	0.6%
2012/08	4	0.7%
2012/09	5	0.9%
2012/10	9	1.7%
2012/11	9	1.7%
2012/12	9	1.7%
2013/01	12	2.2%
2013/02	10	1.9%
2013/03	39	7.3%
2013/04	36	6.7%
2013/05	30	5.6%
2013/06	32	6.0%
2013/07	38	7.1%
2013/08	39	7.3%
2013/09	38	7.1%
2013/10	35	6.5%
2013/11	31	5.8%
2013/12	23	4.3%
2014/01	25	4.7%
2014/02	21	3.9%
2014/03	17	3.2%
2014/04	15	2.8%
2014/05	6	1.1%
2014/06	14	2.6%
<b>Grand Total</b>	<b>536</b>	<b>100.0%</b>

## Revocations Admissions - FY2014 Statistical Reports

### Most Serious Offense / FEMALE

Offense Arrest	Number	Percent
MANU/DIST/DEL/DISP OR POSS W/I	11	25.0%
POS CNTRL SUB EXCEPT MARIJUANA	8	18.2%
THEFT BY SHOPLIFTING	4	9.1%
THEFT BY DECEPTION	3	6.8%
OPERATE MOTOR VEH/AVOID ARREST	2	4.5%
ROBBERY	2	4.5%
THEFT BY RECEIVING STOLEN PROP	2	4.5%
AQUIRING CONT SUBSTNC BY FRAUD	1	2.3%
ASSAULT 2ND DEGREE	1	2.3%
BAD CHECK MORE THAN \$1000	1	2.3%
BURGLARY	1	2.3%
CRIMINAL IMPERSONATION	1	2.3%
DRIVING UNDER INFLUENCE/INJURY	1	2.3%
DRIVING UNDER REVOKED LICENSE	1	2.3%
DRIVING WHILE INTOXICATED	1	2.3%
FAILURE TO APPEAR	1	2.3%
FORGERY 2ND DEGREE	1	2.3%
POSS DEADLY WEAP BY FELON/FUG	1	2.3%
TERRORISTIC THREATS	1	2.3%
<b>Grand Total</b>	<b>44</b>	<b>100.0%</b>

### Most Serious Offense / MALE

Offense Arrest	Number	Percent
MANU/DIST/DEL/DISP OR POSS W/I	70	14.2%
BURGLARY	67	13.6%
ROBBERY	48	9.8%
THEFT BY RECEIVING STOLEN PROP	41	8.3%
POS CNTRL SUB EXCEPT MARIJUANA	36	7.3%
THEFT BY UNLWFL TAKING OR DISP	26	5.3%
DRIVING UNDER REVOKED LICENSE	19	3.9%
TERRORISTIC THREATS	17	3.5%
THEFT BY SHOPLIFTING	16	3.3%
DRIVING WHILE INTOXICATED	13	2.6%
ASSAULT 1ST DEGREE	11	2.2%
FORGERY 2ND DEGREE	9	1.8%
POSS DEADLY WEAP BY FELON/FUG	9	1.8%
ASSAULT 2ND DEGREE	7	1.4%
MURDER 2ND DEGREE	7	1.4%
OPERATE MOTOR VEH/AVOID ARREST	7	1.4%
VIOL OF FINANCIAL TRANS DEVICE	7	1.4%
DOMESTIC ASSAULT	6	1.2%
SEXUAL ASSAULT 1ST DEGREE	6	1.2%
STRANGULATION	6	1.2%
THEFT BY DECEPTION	6	1.2%
POS FIREARM BY FUGITIVE/FELON	5	1.0%
USE DEADLY WEAP TO COMMIT FEL	5	1.0%
CRIMINAL MISCHIEF	4	0.8%
DRIVING UNDER INFLUENCE/INJURY	4	0.8%
ASSAULT 3RD DEGREE	3	0.6%
ESCAPE	3	0.6%
VIOLATION OF PROTECTION ORDER	3	0.6%
ASLT PEAC OFCR/DCS EMP 3RD DGR	2	0.4%
CRIMINAL IMPERSONATION	2	0.4%
FALSE IMPRISONMENT 1ST DEGREE	2	0.4%
SEX OFFENDER REG ACT VIOLATION	2	0.4%
THEFT	2	0.4%
ACCESSORY TO A FELONY	1	0.2%
ASLT PEAC OFCR/DCS EMP 2ND DGR	1	0.2%
ASSAULT BY A CONFINED PERSON	1	0.2%
CHILD ABUSE	1	0.2%
CONSPIRACY	1	0.2%
CRIMINAL NON-SUPPORT	1	0.2%
CRUELTY TO ANIMALS	1	0.2%
FORGERY 1ST DEGREE	1	0.2%
INCEST	1	0.2%
INTENTIONAL VIO NARC DRUG LAW	1	0.2%
MANSLAUGHTER	1	0.2%
MURDER 1ST DEGREE	1	0.2%
POSS FIREARM CONTRL SUBST VIOL	1	0.2%
POSS/RECEIVE STOLEN FIREARM	1	0.2%
POSSESSION OF BURGLARY TOOLS	1	0.2%
POSSESSION OF EPHEDRINE	1	0.2%
RESISTING ARREST	1	0.2%
SEXUAL ASSAULT 3RD DEGREE	1	0.2%
SEXUAL ASSULT OF CHILD 1ST DEG	1	0.2%
USE FIREARM TO COMMIT FELONY	1	0.2%
VIOL SEX OFDR COMM SUPERVISION	1	0.2%
<b>Grand Total</b>	<b>492</b>	<b>100.0%</b>

## Revocations Admissions - FY2014 Statistical Reports

### Most Serious Offense Category

MSO Group	Number	Percent
Drugs	129	24.1%
Theft	100	18.7%
Burglary	69	12.9%
Assault	57	10.6%
Robbery	50	9.3%
Motor Vehicle	48	9.0%
Fraud	22	4.1%
Weapons	22	4.1%
Other	15	2.8%
Sex Offenses	11	2.1%
Homicide	9	1.7%
Morals	2	0.4%
Restraint	2	0.4%
<b>Grand Total</b>	<b>536</b>	<b>100.0%</b>

### By Avg Min & Max Sentences

(Life set to 10-year average of 21.34 Yrs)

Avg MIN Sentence Mo's	Avg MAX Sentence Mo's	# of Revokes
60.17	118.98	536

### County of Commitment

County	Number	Percent
ADAMS	14	2.6%
ANTELOPE	1	0.2%
BOX BUTTE	8	1.5%
BOYD	1	0.2%
BUFFALO	22	4.1%
BUTLER	2	0.4%
CEDAR	1	0.2%
CHEERY	3	0.6%
CHEYENNE	5	0.9%
CLAY	1	0.2%
COLFAX	3	0.6%
DAKOTA	2	0.4%
DAWES	2	0.4%
DAWSON	5	0.9%
DODGE	19	3.5%
DOUGLAS	158	29.5%
FURNAS	1	0.2%
GAGE	9	1.7%
HALL	35	6.5%
HOLT	2	0.4%
HOWARD	1	0.2%
JEFFERSON	6	1.1%
KEITH	1	0.2%
KIMBALL	1	0.2%
KNOX	2	0.4%
LANCASTER	113	21.1%
LINCOLN	16	3.0%
MADISON	11	2.1%
MERRICK	1	0.2%
MORRILL	1	0.2%
NEMAHA	2	0.4%
NUCKOLLS	1	0.2%
OTOE	2	0.4%
PHELPS	1	0.2%
PLATTE	7	1.3%
POLK	1	0.2%
RED WILLOW	1	0.2%
SALINE	1	0.2%
SARPY	32	6.0%
SAUNDERS	1	0.2%
SCOTTS BLUFF	14	2.6%
SEWARD	4	0.7%
SHERIDAN	2	0.4%
SIOUX	1	0.2%
STANTON	1	0.2%
THAYER	2	0.4%
THURSTON	1	0.2%
WASHINGTON	2	0.4%
YORK	13	2.4%
<b>Grand Total</b>	<b>536</b>	<b>100.0%</b>

## Revocations Admissions - FY2014 Statistical Reports

### Minimum Sentence

Years	Number	Percent	Cumulative Number	Cumulative Percent
1 Yr or Less	17	3.1%	17	3.2%
1.01-2.00 Yrs	141	26.5%	158	29.5%
2.01-3.00 Yrs	68	12.5%	226	42.2%
3.01-4.00 Yrs	97	18.4%	323	60.3%
4.01-5.00 Yrs	41	7.7%	364	67.9%
5.01-6.00 Yrs	38	7.1%	402	75.0%
6.01-7.00 Yrs	23	4.4%	425	79.3%
7.01-8.00 Yrs	10	1.9%	435	81.2%
8.01-9.00 Yrs	18	3.5%	453	84.5%
9.01-10.00 Yrs	4	0.8%	457	85.3%
10.01-11.00 Yrs	23	3.8%	480	89.6%
11.01-12.00 Yrs	12	2.1%	492	91.8%
12.01-13.00 Yrs	4	0.8%	496	92.5%
13.01-14.00 Yrs	4	0.8%	500	93.3%
14.01-15.00 Yrs	3	0.6%	503	93.8%
15.01-16.00 Yrs	6	1.2%	509	95.0%
16.01-17.00 Yrs	4	0.8%	513	95.7%
17.01-18.00 Yrs	3	0.6%	516	96.3%
18.01-19.00 Yrs	1	0.2%	517	96.5%
19.01-20.00 Yrs	1	0.2%	518	96.6%
20+ Years	18	3.3%	536	100.0%

### Maximum Sentence

Years	Number	Percent	Cumulative Number	Cumulative Percent
1.01-2.00 Yrs	9	1.7%	9	1.7%
2.01-3.00 Yrs	22	4.1%	31	5.8%
3.01-4.00 Yrs	51	9.5%	82	15.3%
4.01-5.00 Yrs	58	10.8%	140	26.1%
5.01-6.00 Yrs	88	16.4%	228	42.5%
6.01-7.00 Yrs	54	10.1%	282	52.6%
7.01-8.00 Yrs	23	4.3%	305	56.9%
8.01-9.00 Yrs	33	6.2%	338	63.1%
9.01-10.00 Yrs	20	3.7%	358	66.8%
10.01-11.00 Yrs	38	7.1%	396	73.9%
11.01-12.00 Yrs	12	2.2%	408	76.1%
12.01-13.00 Yrs	13	2.4%	421	78.5%
13.01-14.00 Yrs	6	1.1%	427	79.7%
14.01-15.00 Yrs	7	1.3%	434	81.0%
15.01-16.00 Yrs	15	2.8%	449	83.8%
16.01-17.00 Yrs	8	1.5%	457	85.3%
17.01-18.00 Yrs	2	0.4%	459	85.6%
18.01-19.00 Yrs	4	0.7%	463	86.4%
19.01-20.00 Yrs	2	0.4%	465	86.8%
20+ Years	69	12.9%	534	99.6%
Life	2	0.4%	536	100.0%

## Evaluator / Safekeeper Admissions - FY2014 Statistical Reports

### Age at Admission

Age	Number	Percent	Cumulative Number	Cumulative Percent
16	1	0.5%	1	0.5%
17	1	0.5%	2	1.0%
18	4	1.9%	6	2.9%
19	3	1.4%	9	4.3%
20 - 24	33	15.8%	42	20.1%
25 - 29	39	18.7%	81	38.8%
30 - 34	46	22.0%	127	60.8%
35 - 39	29	13.9%	156	74.6%
40 - 44	17	8.1%	173	82.8%
45 - 49	16	7.7%	189	90.4%
50 - 54	11	5.3%	200	95.7%
55 - 59	6	2.9%	206	98.6%
60 and Over	3	1.4%	209	100.0%

### Average Age at Admission

Age at Admission	# of Inmates
34.27	209

### Gender

Gender	Number	Percent
Male	172	82.3%
Female	37	17.7%
<b>Grand Total</b>	<b>209</b>	<b>100.0%</b>

### Race

Race	Number	Percent
White	133	63.6%
Hispanic	31	14.8%
Black	20	9.6%
Data Unavailable	11	5.3%
Native American	11	5.3%
Asian	2	1.0%
Other	1	0.5%
<b>Grand Total</b>	<b>209</b>	<b>100.0%</b>

### Status

Status	Number	Percent
County Safekeeper	118	56.5%
Federal Safekeeper	46	22.0%
Evaluator	32	15.3%
Sarpy Co Work Release	10	4.8%
Data Unavailable	3	1.4%
<b>Grand Total</b>	<b>209</b>	<b>100.0%</b>

### Admissions By Month

Month/Year	Number	Percent
2013/07	24	11.5%
2013/08	24	11.5%
2013/09	16	7.7%
2013/10	21	10.0%
2013/11	23	11.0%
2013/12	23	11.0%
2014/01	15	7.2%
2014/02	9	4.3%
2014/03	16	7.7%
2014/04	13	6.2%
2014/05	16	7.7%
2014/06	9	4.3%
<b>Grand Total</b>	<b>209</b>	<b>100.0%</b>

### Commitment Area

Region	Number	Percent
US MARSHAL/ATTORNEY	44	21.1%
Metro Omaha	13	6.2%
Southeast	62	29.7%
Northeast	35	16.7%
South Central	18	8.6%
North Central	6	2.9%
Panhandle	10	4.8%
Data Unavailable	21	10.0%
<b>Grand Total</b>	<b>209</b>	<b>100.0%</b>

## WEC Admissions - FY2014 Statistical Reports

### Probationer Age at Admission

Age	Number	Percent	Cumulative Number	Cumulative Percent
19	1	25.0%	1	25.0%
20 - 24	1	25.0%	2	50.0%
30 - 34	2	50.0%	4	100.0%

### Probationers Average Age at Admission

Age at Admission	# of Probationers
26.54	4

### Probationer Gender

Gender	Number	Percent
Male	4	100.0%
<b>Grand Total</b>	<b>4</b>	<b>100.0%</b>

### Probationer Race

Race	Number	Percent
White	3	75.0%
Hispanic	1	25.0%
<b>Grand Total</b>	<b>4</b>	<b>100.0%</b>

### Probationer Admissions By Month

Month/Year	Number	Percent
2013/07	2	50.0%
2013/09	1	25.0%
2013/12	1	25.0%
<b>Grand Total</b>	<b>4</b>	<b>100.0%</b>

### Probationer Most Serious Offense Category

MSO Group	Number	Percent
Drugs	3	75.0%
Assault	1	25.0%
<b>Grand Total</b>	<b>4</b>	<b>100.0%</b>

## WEC Admissions - FY2014 Statistical Reports

### Probationer County of Commitment

County	Number	Percent
DEUEL	1	25.0%
GAGE	2	50.0%
RICHARDSON	1	25.0%
<b>Grand Total</b>	<b>4</b>	<b>100.0%</b>

### INMATE Admissions

(not probationer)

# of Inmates
567

## Institutional Releases - FY2014 Statistical Reports

### Age At Admission

Age	Number	Percent	Cumulative Number	Cumulative Percent
15	1	0.0%	1	0.0%
16	6	0.2%	7	0.2%
17	31	1.1%	38	1.3%
18	46	1.7%	84	3.0%
19	113	4.1%	197	7.1%
20 - 24	567	20.5%	764	27.5%
25 - 29	490	17.7%	1254	45.3%
30 - 34	435	15.7%	1689	61.1%
35 - 39	285	10.3%	1974	71.3%
40 - 44	285	10.3%	2259	81.7%
45 - 49	247	8.9%	2506	90.5%
50 - 54	144	5.2%	2650	95.7%
55 - 59	68	2.5%	2718	98.2%
60 and Over	50	1.8%	2768	100.0%

### Average Age at Admission

Age at Admission	# of Inmates
33.60	2768

### Race

Race	Number	Percent
WHITE	1619	58.5%
BLACK	666	24.1%
HISPANIC	313	11.3%
NATIVE AMERICAN	120	4.3%
ASIAN	24	0.9%
OTHER	20	0.7%
UNKNOWN	6	0.2%
<b>Grand Total</b>	<b>2768</b>	<b>100.0%</b>

### Release Type\* (by gender)

(\*this report only counts once inmates that paroled, revoked, and then discharged)

Release Type	Females	% of Females	Males	% of Males	Total	% of Total
Parole	245	67.9%	1411	58.9%	1656	60.1%
Mandatory Discharge	115	31.9%	967	40.4%	1082	39.2%
Deceased	0	0.0%	14	0.6%	14	0.5%
Transfer	0	0.0%	2	0.1%	2	0.1%
Case Dismissed	0	0.0%	1	0.0%	1	0.0%
Escape	1	0.3%	0	0.0%	1	0.0%
Other	0	0.0%	1	0.0%	1	0.0%

### Admission Status

Status	Number	Percent
First Time	1810	65.4%
Multiple	950	34.3%
Interstate Transfer	8	0.3%
<b>Grand Total</b>	<b>2768</b>	<b>100.0%</b>

### Avg Min & Max Sentence

Gender	Avg MIN Sentence Mo's	Avg MAX Sentence Mo's	# of Inmates
Female	30.89	60.25	366
Male	42.10	74.03	2402
<b>Grand Total</b>	<b>40.62</b>	<b>72.21</b>	<b>2768</b>



## Institutional Releases - FY2014 Statistical Reports

### Most Serious Offense Category

MSO Group	Number	Percent
Drugs	703	25.4%
Theft	403	14.6%
Motor Vehicle	348	12.6%
Assault	334	12.1%
Burglary	231	8.3%
Sex Offenses	205	7.4%
Robbery	141	5.1%
Weapons	120	4.3%
Other	109	3.9%
Fraud	106	3.8%
Homicide	32	1.2%
Arson	19	0.7%
Morals	10	0.4%
Restraint	6	0.2%
Data Unavailable	1	0.0%
<b>Grand Total</b>	<b>2768</b>	<b>100.0%</b>

## Institutional Releases - FY2014 Statistical Reports

### Minimum Sentence

Years	Number	Percent	Cumulative Number	Cumulative Percent
1 Yr or Less	159	5.7%	159	5.7%
1.01-2.00 Yrs	1174	42.4%	1333	48.2%
2.01-3.00 Yrs	391	14.1%	1724	62.3%
3.01-4.00 Yrs	357	12.9%	2081	75.2%
4.01-5.00 Yrs	168	6.1%	2249	81.3%
5.01-6.00 Yrs	128	4.6%	2377	85.9%
6.01-7.00 Yrs	90	3.3%	2467	89.1%
7.01-8.00 Yrs	40	1.4%	2507	90.6%
8.01-9.00 Yrs	47	1.7%	2554	92.3%
9.01-10.00 Yrs	14	0.5%	2568	92.8%
10.01-11.00 Yrs	75	2.7%	2643	95.5%
11.01-12.00 Yrs	10	0.4%	2653	95.8%
12.01-13.00 Yrs	16	0.6%	2669	96.4%
13.01-14.00 Yrs	6	0.2%	2675	96.6%
14.01-15.00 Yrs	8	0.3%	2683	96.9%
15.01-16.00 Yrs	25	0.9%	2708	97.8%
16.01-17.00 Yrs	3	0.1%	2711	97.9%
17.01-18.00 Yrs	3	0.1%	2714	98.0%
18.01-19.00 Yrs	8	0.3%	2722	98.3%
19.01-20.00 Yrs	1	0.0%	2723	98.4%
20+ Years	45	1.6%	2768	100.0%

### Maximum Sentence

Years	Number	Percent	Cumulative Number	Cumulative Percent
1 Yr or Less	8	0.3%	8	0.3%
1.01-2.00 Yrs	518	18.7%	526	19.0%
2.01-3.00 Yrs	320	11.6%	846	30.6%
3.01-4.00 Yrs	386	13.9%	1232	44.5%
4.01-5.00 Yrs	283	10.2%	1515	54.7%
5.01-6.00 Yrs	409	14.8%	1924	69.5%
6.01-7.00 Yrs	181	6.5%	2105	76.0%
7.01-8.00 Yrs	59	2.1%	2164	78.2%
8.01-9.00 Yrs	94	3.4%	2258	81.6%
9.01-10.00 Yrs	45	1.6%	2303	83.2%
10.01-11.00 Yrs	125	4.5%	2428	87.7%
11.01-12.00 Yrs	32	1.2%	2460	88.9%
12.01-13.00 Yrs	40	1.4%	2500	90.3%
13.01-14.00 Yrs	13	0.5%	2513	90.8%
14.01-15.00 Yrs	18	0.7%	2531	91.4%
15.01-16.00 Yrs	37	1.3%	2568	92.8%
16.01-17.00 Yrs	19	0.7%	2587	93.5%
17.01-18.00 Yrs	7	0.3%	2594	93.7%
18.01-19.00 Yrs	12	0.4%	2606	94.1%
19.01-20.00 Yrs	3	0.1%	2609	94.3%
20+ Years	145	5.2%	2754	99.5%
Life	14	0.5%	2768	100.0%

## Evaluator / Safekeeper Releases - FY2014 Statistical Reports

### Age at Admission

Age	Number	Percent	Cumulative Number	Cumulative Percent
17	1	0.5%	1	0.5%
18	3	1.4%	4	1.8%
19	4	1.8%	8	3.6%
20 - 24	36	16.2%	44	19.8%
25 - 29	34	15.3%	78	35.1%
30 - 34	55	24.8%	133	59.9%
35 - 39	31	14.0%	164	73.9%
40 - 44	20	9.0%	184	82.9%
45 - 49	17	7.7%	201	90.5%
50 - 54	11	5.0%	212	95.5%
55 - 59	5	2.3%	217	97.7%
60 and Over	5	2.3%	222	100.0%

### Average Age at Admission

Age at Admission	# of Inmates
34.65	222

### Age at Release

Age	Number	Percent	Cumulative Number	Cumulative Percent
18	3	1.4%	3	1.4%
19	3	1.4%	6	2.7%
20 - 24	37	16.7%	43	19.4%
25 - 29	35	15.8%	78	35.1%
30 - 34	49	22.1%	127	57.2%
35 - 39	36	16.2%	163	73.4%
40 - 44	18	8.1%	181	81.5%
45 - 49	20	9.0%	201	90.5%
50 - 54	11	5.0%	212	95.5%
55 - 59	5	2.3%	217	97.7%
60 and Over	5	2.3%	222	100.0%

### Average Age at Release

Age at Release	# of Inmates
34.86	222

### Average Length of Stay

Years	Months	Days	# of Inmates
0.21	2.47	75.00	222

### Institutional Release Date

Year/Month	Number	Percent
2013/07	20	9.0%
2013/08	21	9.5%
2013/09	14	6.3%
2013/10	27	12.2%
2013/11	25	11.3%
2013/12	22	9.9%
2014/01	25	11.3%
2014/02	21	9.5%
2014/03	13	5.9%
2014/04	11	5.0%
2014/05	15	6.8%
2014/06	8	3.6%
<b>Grand Total</b>	<b>222</b>	<b>100.0%</b>

### Institutional Release Type

Type	Number	Percent
MANDATORY DISCHARGE	215	96.8%
OTHER	3	1.4%
DISCHARGE - INS	2	0.9%
EXPIRATION OF SENTENCE	1	0.5%
TRANSFER	1	0.5%
<b>Grand Total</b>	<b>222</b>	<b>100.0%</b>

### Race

Race	Number	Percent
White	139	62.6%
Hispanic	36	16.2%
Black	28	12.6%
Data Unavailable	8	3.6%
Native American	8	3.6%
Asian	2	0.9%
Other	1	0.5%
<b>Grand Total</b>	<b>222</b>	<b>100.0%</b>

### Gender

Gender	Number	Percent
Male	191	86.0%
Female	31	14.0%
<b>Grand Total</b>	<b>222</b>	<b>100.0%</b>

### Status

Status	Number	Percent
County Safekeeper	106	47.7%
Federal Safekeeper	71	32.0%
Evaluator	34	15.3%
Sarpy Co. Work Release	10	4.5%
Data Unavailable	1	0.5%
<b>Grand Total</b>	<b>222</b>	<b>100.0%</b>

## Evaluator / Safekeeper Releases - FY2014 Statistical Reports

### Commitment Area

Region	Number	Percent
US MARSHAL/ATTORNEY	69	31.1%
Metro Omaha	14	6.3%
Southeast	58	26.1%
Northeast	36	16.2%
South Central	11	5.0%
North Central	4	1.8%
Panhandle	11	5.0%
Data Unavailable	19	8.6%
<b>Grand Total</b>	<b>222</b>	<b>100.0%</b>

### Length of Stay in Institution

Months	Number	Percent	Cumulative Number	Cumulative Percent
0 - 1 Month	89	40.1%	89	40.1%
2 Months	28	12.6%	117	52.7%
3 Months	35	15.8%	152	68.5%
4 Months	33	14.9%	185	83.3%
5 Months	12	5.4%	197	88.7%
6 Months	5	2.3%	202	91.0%
7 - 12 Months	17	7.7%	219	98.6%
13 - 18 Months	2	0.9%	221	99.5%
19 - 24 Months	1	0.5%	222	100.0%

## WEC Releases - FY2014 Statistical Reports

### Probationer Age at Admission

Age	Number	Percent	Cumulative Number	Cumulative Percent
19	1	16.7%	1	16.7%
20 - 24	3	50.0%	4	66.7%
30 - 34	2	33.3%	6	100.0%

### Probationer Average Age at Admission

Age at Admission	# of Probationers
24.91	6

### Probationer Age at Release

Age	Number	Percent	Cumulative Number	Cumulative Percent
19	1	16.7%	1	16.7%
20 - 24	3	50.0%	4	66.7%
30 - 34	2	33.3%	6	100.0%

### Probationer Average Age at Release

Age at Admission	# of Probationers
25.35	6

### Probationer Average Length of Stay

Years	Months	Days	# of Probationers
0.45	5.39	164	6

### Probationer Release Date

Year/Month	Number	Percent
2013/07	1	16.7%
2013/12	3	50.0%
2014/03	1	16.7%
2014/05	1	16.7%
<b>Grand Total</b>	<b>6</b>	<b>100.0%</b>

### Probationer Release Type

Type	Number	Percent
WEC RLSE-SUCCESSFUL	6	100.0%
<b>Grand Total</b>	<b>6</b>	<b>100.0%</b>

### Probationer Race

Race	Number	Percent
White	5	83.3%
Hispanic	1	16.7%
<b>Grand Total</b>	<b>6</b>	<b>100.0%</b>

### Probationer Gender

Gender	Number	Percent
Male	6	100.0%
<b>Grand Total</b>	<b>6</b>	<b>100.0%</b>

## WEC Releases - FY2014 Statistical Reports

### Probationer County of Commitment

County	Number	Percent
DEUEL	1	16.7%
GAGE	3	50.0%
RICHARDSON	2	33.3%
<b>Grand Total</b>	<b>6</b>	<b>100.0%</b>

### Probationer Length of Stay in Institution

Months	Number	Percent	Cumulative Number	Cumulative Percent
5 Months	1	16.7%	1	16.7%
6 Months	5	83.3%	6	100.0%

### INMATE Paroles or Discharges

(excludes probationers & transfers)

# of Inmates
143

## Community Corrections Admissions - FY2014 Statistical Reports

### Age at Admission to Prison

Age at Admission	# of Inmates	Percent
16	2	0.2%
17	5	0.4%
18	13	1.1%
19	31	2.6%
20 - 24	200	16.7%
25 - 29	204	17.0%
30 - 34	200	16.7%
35 - 39	155	12.9%
40 - 44	133	11.1%
45 - 49	115	9.6%
50 - 54	79	6.6%
55 - 59	37	3.1%
60 and Over	23	1.9%
<b>Grand Total</b>	<b>1197</b>	<b>100.0%</b>

### Average Age at Admission to Prison

Age at Admission	# of Inmates
34.75	1197

### Gender

Gender	Number	Percent
Female	202	16.9%
Male	995	83.1%
<b>Grand Total</b>	<b>1197</b>	<b>100.0%</b>

### Race

Race	Number	Percent
WHITE	751	62.7%
BLACK	293	24.5%
HISPANIC	88	7.4%
NATIVE AMERICAN	47	3.9%
OTHER	9	0.8%
ASIAN	7	0.6%
DATA UNAVAILABLE	2	0.2%
<b>Grand Total</b>	<b>1197</b>	<b>100.0%</b>

### Status

Status	Number	Percent
First - Time	787	65.7%
Multiple	410	34.3%
<b>Grand Total</b>	<b>1197</b>	<b>100.0%</b>

### Most Serious Offense Category

MSO Group	Number	Percent
Drugs	309	25.8%
Motor Vehicle	189	15.8%
Theft	155	12.9%
Assault	114	9.5%
Burglary	113	9.4%
Weapons	73	6.1%
Robbery	61	5.1%
Fraud	55	4.6%
Sex Offenses	45	3.8%
Other	40	3.3%
Homicide	21	1.8%
Arson	13	1.1%
Restraint	6	0.5%
Morals	3	0.3%
<b>Grand Total</b>	<b>1197</b>	<b>100.0%</b>

### Admissions to Re-Entry Furlough Program

Record Center	Number	Percent
CCL	98	64.5%
CCO	54	35.5%
<b>Grand Total</b>	<b>152</b>	<b>100.0%</b>

## Community Corrections Admissions - FY2014 Statistical Reports

### Minimum Sentence

Years	Number	Percent	Cumulative Number	Cumulative Percent
1 Yr or Less	155	12.9%	155	12.9%
1.01-2.00 Yrs	376	31.4%	531	44.4%
2.01-3.00 Yrs	190	15.9%	721	60.2%
3.01-4.00 Yrs	133	11.1%	854	71.3%
4.01-5.00 Yrs	94	7.9%	948	79.2%
5.01-6.00 Yrs	61	5.1%	1009	84.3%
6.01-7.00 Yrs	26	2.2%	1035	86.5%
7.01-8.00 Yrs	34	2.8%	1069	89.3%
8.01-9.00 Yrs	12	1.0%	1081	90.3%
9.01-10.00 Yrs	36	3.0%	1117	93.3%
10.01-11.00 Yrs	1	0.1%	1118	93.4%
11.01-12.00 Yrs	19	1.6%	1137	95.0%
12.01-13.00 Yrs	4	0.3%	1141	95.3%
13.01-14.00 Yrs	7	0.6%	1148	95.9%
14.01-15.00 Yrs	14	1.2%	1162	97.1%
15.01-16.00 Yrs	3	0.3%	1165	97.3%
16.01-17.00 Yrs	2	0.2%	1167	97.5%
17.01-18.00 Yrs	3	0.3%	1170	97.7%
19.01-20.00 Yrs	5	0.4%	1175	98.2%
20+ Years	22	1.8%	1197	100.0%

### Maximum Sentence

Years	Number	Percent	Cumulative Number	Cumulative Percent
1 Yr or Less	56	4.7%	56	4.7%
1.01-2.00 Yrs	136	11.4%	192	16.0%
2.01-3.00 Yrs	164	13.7%	356	29.7%
3.01-4.00 Yrs	135	11.3%	491	41.0%
4.01-5.00 Yrs	209	17.5%	700	58.5%
5.01-6.00 Yrs	96	8.0%	796	66.5%
6.01-7.00 Yrs	40	3.3%	836	69.8%
7.01-8.00 Yrs	64	5.3%	900	75.2%
8.01-9.00 Yrs	30	2.5%	930	77.7%
9.01-10.00 Yrs	75	6.3%	1005	84.0%
10.01-11.00 Yrs	11	0.9%	1016	84.9%
11.01-12.00 Yrs	29	2.4%	1045	87.3%
12.01-13.00 Yrs	9	0.8%	1054	88.1%
13.01-14.00 Yrs	10	0.8%	1064	88.9%
14.01-15.00 Yrs	25	2.1%	1089	91.0%
15.01-16.00 Yrs	16	1.3%	1105	92.3%
16.01-17.00 Yrs	4	0.3%	1109	92.6%
17.01-18.00 Yrs	9	0.8%	1118	93.4%
19.01-20.00 Yrs	22	1.8%	1140	95.2%
20+ Years	51	4.3%	1191	99.5%
Life	6	0.5%	1197	100.0%



## Parole Admissions - FY2014 Statistical Reports

### Age at Release to Parole

Age	Number	Percent	Cumulative Number	Cumulative Percent
17	4	0.2%	4	0.2%
18	6	0.4%	10	0.6%
19	17	1.0%	27	1.6%
20 - 24	280	16.9%	307	18.5%
25 - 29	291	17.6%	598	36.1%
30 - 34	291	17.6%	889	53.7%
35 - 39	215	13.0%	1104	66.7%
40 - 44	177	10.7%	1281	77.4%
45 - 49	158	9.5%	1439	86.9%
50 - 54	110	6.6%	1549	93.5%
55 - 59	66	4.0%	1615	97.5%
60 and Over	41	2.5%	1656	100.0%

### Avg Age at Admission

Age at Admission
33.93

### Avg Age at Release to Parole

Age at Release
35.95

### Gender

Gender	Number	Percent
Female	245	14.8%
Male	1411	85.2%
<b>Grand Total</b>	<b>1656</b>	<b>100.0%</b>

### Gender

Race	Number	Percent
WHITE	1021	61.7%
BLACK	353	21.3%
HISPANIC	182	11.0%
NATIVE AMERICAN	70	4.2%
ASIAN	15	0.9%
OTHER	12	0.7%
UNKNOWN	3	0.2%
<b>Grand Total</b>	<b>1656</b>	<b>100.0%</b>

### Avg Min & Max Sentence

(Life set to 10-year average of 21.34 Yrs)

Avg MIN Sentence Mo's	Avg MAX Sentence Mo's	# of Parolees
44.30	82.71	1656

### Status

Admission Type	Number	Percent
First-Time	1117	67.5%
Multiple	539	32.5%
<b>Grand Total</b>	<b>1656</b>	<b>100.0%</b>

### Most Serious Offense Category

MSO Group	Number	Percent
Drugs	472	28.5%
Theft	240	14.5%
Motor Vehicle	235	14.2%
Assault	173	10.4%
Burglary	152	9.2%
Robbery	85	5.1%
Sex Offenses	77	4.6%
Weapons	68	4.1%
Fraud	56	3.4%
Other	56	3.4%
Homicide	26	1.6%
Arson	8	0.5%
Morals	5	0.3%
Restraint	3	0.2%
<b>Grand Total</b>	<b>1656</b>	<b>100.0%</b>

## Parole Admissions - FY2014 Statistical Reports

### By Length of Stay in Institution

Length of Stay	Number	Percent	Cumulative #	Cumulative %
0 - 6 Months	338	20.4%	338	20.4%
7 - 12 Months	519	31.3%	857	51.8%
13 - 18 Months	236	14.3%	1093	66.0%
19 - 24 Months	152	9.2%	1245	75.2%
25 - 30 Months	47	2.8%	1292	78.0%
31 - 36 Months	102	6.2%	1394	84.2%
37 - 42 Months	49	3.0%	1443	87.1%
43 - 48 Months	39	2.4%	1482	89.5%
49 - 54 Months	27	1.6%	1509	91.1%
55 - 60 Months	23	1.4%	1532	92.5%
5.01 - 6.00 Yrs	26	1.6%	1558	94.1%
6.01 - 7.00 Yrs	22	1.3%	1580	95.4%
7.01 - 8.00 Yrs	15	0.9%	1595	96.3%
8.01 - 9.00 Yrs	4	0.2%	1599	96.6%
9.01 - 10.00 Yrs	13	0.8%	1612	97.3%
10.01 - 11.00 Yrs	6	0.4%	1618	97.7%
11.01 - 12.00 Yrs	5	0.3%	1623	98.0%
12.01 - 13.00 Yrs	1	0.1%	1624	98.1%
13.01 - 14.00 Yrs	4	0.2%	1628	98.3%
14.01 - 15.00 Yrs	6	0.4%	1634	98.7%
15.01 - 16.00 Yrs	1	0.1%	1635	98.7%
16.01 - 17.00 Yrs	3	0.2%	1638	98.9%
17.01 - 18.00 Yrs	3	0.2%	1641	99.1%
18.01 - 19.00 Yrs	1	0.1%	1642	99.2%
Over 20 Years	14	0.8%	1656	100.0%

### Region Paroled To

Region	Number	Percent
Metro Omaha	530	32.5%
Metro Lincoln	413	25.3%
Southeast	109	6.7%
Northeast	137	8.4%
South Central	168	10.3%
North Central	24	1.5%
Panhandle	46	2.8%
Out of State	117	7.2%
Data Unavailable	112	6.9%
<b>Grand Total</b>	<b>1656</b>	<b>100.0%</b>

## Parole Admissions - FY2014 Statistical Reports

### Minimum Sentence

Years	Number	Percent	Cumulative Number	Cumulative Percent
1 Yr or Less	59	3.6%	59	3.6%
1.01-2.00 Yrs	640	38.6%	699	42.2%
2.01-3.00 Yrs	264	15.9%	963	58.2%
3.01-4.00 Yrs	221	13.3%	1184	71.5%
4.01-5.00 Yrs	116	7.0%	1300	78.5%
5.01-6.00 Yrs	83	5.0%	1383	83.5%
6.01-7.00 Yrs	66	4.0%	1449	87.5%
7.01-8.00 Yrs	30	1.8%	1479	89.3%
8.01-9.00 Yrs	33	2.0%	1512	91.3%
9.01-10.00 Yrs	11	0.7%	1523	92.0%
10.01-11.00 Yrs	48	2.9%	1571	94.9%
11.01-12.00 Yrs	8	0.5%	1579	95.4%
12.01-13.00 Yrs	12	0.7%	1591	96.1%
13.01-14.00 Yrs	6	0.4%	1597	96.4%
14.01-15.00 Yrs	6	0.4%	1603	96.8%
15.01-16.00 Yrs	14	0.8%	1617	97.6%
16.01-17.00 Yrs	3	0.2%	1620	97.8%
17.01-18.00 Yrs	1	0.1%	1621	97.9%
18.01-19.00 Yrs	5	0.3%	1626	98.2%
19.01-20.00 Yrs	1	0.1%	1627	98.2%
20+ Years	29	1.8%	1656	100.0%

### Maximum Sentence

Years	Number	Percent	Cumulative Number	Cumulative Percent
1.01-2.00 Yrs	78	4.7%	78	4.7%
2.01-3.00 Yrs	196	11.8%	274	16.5%
3.01-4.00 Yrs	300	18.1%	574	34.7%
4.01-5.00 Yrs	219	13.2%	793	47.9%
5.01-6.00 Yrs	272	16.4%	1065	64.3%
6.01-7.00 Yrs	121	7.3%	1186	71.6%
7.01-8.00 Yrs	48	2.9%	1234	74.5%
8.01-9.00 Yrs	66	4.0%	1300	78.5%
9.01-10.00 Yrs	28	1.7%	1328	80.2%
10.01-11.00 Yrs	78	4.7%	1406	84.9%
11.01-12.00 Yrs	26	1.6%	1432	86.5%
12.01-13.00 Yrs	32	1.9%	1464	88.4%
13.01-14.00 Yrs	9	0.5%	1473	88.9%
14.01-15.00 Yrs	12	0.7%	1485	89.7%
15.01-16.00 Yrs	27	1.6%	1512	91.3%
16.01-17.00 Yrs	16	1.0%	1528	92.3%
17.01-18.00 Yrs	5	0.3%	1533	92.6%
18.01-19.00 Yrs	12	0.7%	1545	93.3%
19.01-20.00 Yrs	3	0.2%	1548	93.5%
20+ Years	95	5.7%	1643	99.2%
Life	13	0.8%	1656	100.0%

## Parole Discharges - FY2014 Statistical Reports

### Age at Parole Admission

Age	Number	Percent	Cumulative Number	Cumulative Percent
17	1	0.1%	1	0.1%
18	6	0.5%	7	0.5%
19	8	0.6%	15	1.2%
20 - 24	228	17.8%	243	19.0%
25 - 29	248	19.4%	491	38.3%
30 - 34	215	16.8%	706	55.1%
35 - 39	164	12.8%	870	67.9%
40 - 44	133	10.4%	1003	78.3%
45 - 49	120	9.4%	1123	87.7%
50 - 54	92	7.2%	1215	94.8%
55 - 59	45	3.5%	1260	98.4%
60 and Over	21	1.6%	1281	100.0%

### Avg Age at Parole Admission

Age at Parole
35.49

### Age at Release from Parole

Age	Number	Percent	Cumulative Number	Cumulative Percent
17	1	0.1%	1	0.1%
18	1	0.1%	2	0.2%
19	5	0.4%	7	0.5%
20 - 24	207	16.2%	214	16.7%
25 - 29	244	19.0%	458	35.8%
30 - 34	219	17.1%	677	52.8%
35 - 39	170	13.3%	847	66.1%
40 - 44	122	9.5%	969	75.6%
45 - 49	121	9.4%	1090	85.1%
50 - 54	106	8.3%	1196	93.4%
55 - 59	47	3.7%	1243	97.0%
60 and Over	25	2.0%	1268	99.0%
Data Unavailable	13	1.0%	1281	100.0%

### Avg Age at Release from Parole

Age at Release	# of Parolees
36.14	1281

### Race

Race	Number	Percent
ASIAN	11	0.9%
BLACK	265	20.7%
HISPANIC	153	11.9%
NATIVE AMERICAN	36	2.8%
OTHER	16	1.2%
WHITE	800	62.5%
<b>Grand Total</b>	<b>1281</b>	<b>100.0%</b>

### Status

Status	Number	Percent
First - Time	960	74.9%
Multiple	320	25.0%
Interstate Transfer	1	0.1%
<b>Grand Total</b>	<b>1281</b>	<b>100.0%</b>

### Gender

Gender	Number	Percent
Female	219	17.1%
Male	1062	82.9%
<b>Grand Total</b>	<b>1281</b>	<b>100.0%</b>

### Parole Discharge Date

Date	Number	Percent
2013/07	136	10.6%
2013/08	113	8.8%
2013/09	129	10.1%
2013/10	91	7.1%
2013/11	91	7.1%
2013/12	123	9.6%
2014/01	104	8.1%
2014/02	92	7.2%
2014/03	104	8.1%
2014/04	95	7.4%
2014/05	98	7.7%
2014/06	105	8.2%
<b>Grand Total</b>	<b>1281</b>	<b>100.0%</b>

### Avg Min & Max Sentence

(Life set to 10-year average of 21.34 Yrs)

Avg MIN Sentence Mo's	Avg MAX Sentence Mo's	# of Parolees
37.41	68.68	1281

## Parole Discharges - FY2014 Statistical Reports

### Most Serious Offense Category

MSO Group	Number	Percent
Drugs	343	26.8%
Motor Vehicle	202	15.8%
Theft	176	13.7%
Assault	132	10.3%
Burglary	124	9.7%
Sex Offenses	62	4.8%
Fraud	59	4.6%
Robbery	48	3.7%
Other	46	3.6%
Weapons	41	3.2%
Homicide	23	1.8%
Arson	10	0.8%
Morals	9	0.7%
Restraint	6	0.5%
<b>Grand Total</b>	<b>1281</b>	<b>100.0%</b>

### Region Paroled To

Region Paroled To	Number	Percent
Metro Omaha	405	30.8%
Metro Lincoln	297	22.6%
Out of State	169	12.9%
South Central	137	10.4%
Northeast	128	9.7%
Southeast	85	6.5%
Immigration	48	3.7%
Panhandle	25	1.9%
US Marshal	12	0.9%
North Central	7	0.5%
<b>Grand Total</b>	<b>1281</b>	<b>100.0%</b>

## Parole Discharges - FY2014 Statistical Reports

### Minimum Sentence

Years	Number	Percent	Cumulative Number	Cumulative Percent
1.00 Yr or Less	231	18.0%	231	18.0%
1.01-2.00 Yrs	527	41.1%	758	59.2%
2.01-3.00 Yrs	187	14.6%	945	73.8%
3.01-4.00 Yrs	129	10.1%	1074	83.8%
4.01-5.00 Yrs	56	4.4%	1130	88.2%
5.01-6.00 Yrs	41	3.2%	1171	91.4%
6.01-7.00 Yrs	18	1.4%	1189	92.8%
7.01-8.00 Yrs	13	1.0%	1202	93.8%
8.01-9.00 Yrs	7	0.5%	1209	94.4%
9.01-10.00 Yrs	21	1.6%	1230	96.0%
10.01-11.00 Yrs	6	0.5%	1236	96.5%
11.01-12.00 Yrs	7	0.5%	1243	97.0%
12.01-13.00 Yrs	3	0.2%	1246	97.3%
14.01-15.00 Yrs	9	0.7%	1255	98.0%
15.01-16.00 Yrs	2	0.2%	1257	98.1%
16.01-17.00 Yrs	4	0.3%	1261	98.4%
17.01-18.00 Yrs	6	0.5%	1267	98.9%
19.01-20.00 Yrs	6	0.5%	1273	99.4%
Over 20 Years	8	0.6%	1281	100.0%

### Maximum Sentence

Years	Number	Percent	Cumulative Number	Cumulative Percent
1.00 Yr or Less	33	2.6%	33	2.6%
1.01-2.00 Yrs	195	15.2%	228	17.8%
2.01-3.00 Yrs	243	19.0%	471	36.8%
3.01-4.00 Yrs	213	16.6%	684	53.4%
4.01-5.00 Yrs	219	17.1%	903	70.5%
5.01-6.00 Yrs	106	8.3%	1009	78.8%
6.01-7.00 Yrs	42	3.3%	1051	82.0%
7.01-8.00 Yrs	52	4.1%	1103	86.1%
8.01-9.00 Yrs	18	1.4%	1121	87.5%
9.01-10.00 Yrs	51	4.0%	1172	91.5%
10.01-11.00 Yrs	8	0.6%	1180	92.1%
11.01-12.00 Yrs	14	1.1%	1194	93.2%
12.01-13.00 Yrs	6	0.5%	1200	93.7%
13.01-14.00 Yrs	8	0.6%	1208	94.3%
14.01-15.00 Yrs	12	0.9%	1220	95.2%
15.01-16.00 Yrs	2	0.2%	1222	95.4%
16.01-17.00 Yrs	5	0.4%	1227	95.8%
17.01-18.00 Yrs	2	0.2%	1229	95.9%
18.01-19.00 Yrs	2	0.2%	1231	96.1%
19.01-20.00 Yrs	14	1.1%	1245	97.2%
Over 20 Years	35	2.7%	1280	99.9%
Life	1	0.1%	1281	100.0%

## Parole Revocations - FY2014 Statistical Reports

### Age at Release to Parole

Age	Number	Percent	Cumulative Number	Cumulative Percent
17	2	0.4%	2	0.4%
18	3	0.6%	5	1.0%
19	10	1.9%	15	2.9%
20 - 24	100	19.2%	115	22.1%
25 - 29	88	16.9%	203	39.0%
30 - 34	82	15.7%	285	54.7%
35 - 39	76	14.6%	361	69.3%
40 - 44	65	12.5%	426	81.8%
45 - 49	43	8.3%	469	90.0%
50 - 54	33	6.3%	502	96.4%
55 - 59	17	3.3%	519	99.6%
60 and Over	2	0.4%	521	100.0%

Data Unavailable: 15

### Average Age at Release to Parole

Age at Release
35.09

### Age at Revocation

Age	Number	Percent	Cumulative Number	Cumulative Percent
15	1	0.2%	1	0.2%
16	2	0.4%	3	0.6%
17	9	1.7%	12	2.2%
18	13	2.5%	25	4.7%
19	28	5.4%	53	9.9%
20 - 24	123	23.2%	176	32.8%
25 - 29	85	15.4%	261	48.7%
30 - 34	84	15.7%	345	64.4%
35 - 39	61	11.3%	406	75.7%
40 - 44	60	11.3%	466	86.9%
45 - 49	43	8.1%	509	95.0%
50 - 54	18	3.3%	527	98.3%
55 - 59	7	1.3%	534	99.6%
60 and Over	2	0.2%	536	100.0%

### Average Age at Revocation

Age at Revocation	Number
35.20	536

### Admission Status

Status	Number	Percent
First - Time	278	51.9%
Multiple	258	48.1%
<b>Grand Total</b>	<b>536</b>	<b>100.0%</b>

### Gender

Gender	Number	Percent
Female	44	8.2%
Male	492	91.8%
<b>Grand Total</b>	<b>536</b>	<b>100.0%</b>

### Race

Race	Number	Percent
WHITE	325	60.6%
BLACK	137	25.6%
HISPANIC	34	6.3%
NATIVE AMERICAN	30	5.6%
ASIAN	6	1.1%
OTHER	3	0.6%
UNKNOWN	1	0.2%
<b>Grand Total</b>	<b>536</b>	<b>100.0%</b>

### By Avg Min & Max Sentences

(Life set to 10-year average of 21.34 Yrs)

Avg MIN Sentence Mo's	Avg MAX Sentence Mo's	# of Revokees
60.17	118.98	536

## Parole Revocations - FY2014 Statistical Reports

### Revocation Date

Mo/Year	Number	Percent
7/2013	44	8.2%
8/2013	36	6.7%
9/2013	35	6.5%
10/2013	65	12.1%
11/2013	41	7.6%
12/2013	48	9.0%
1/2014	52	9.7%
2/2014	46	8.6%
3/2014	40	7.5%
4/2014	50	9.3%
5/2014	40	7.5%
6/2014	39	7.3%
<b>Grand Total</b>	<b>536</b>	<b>100.0%</b>

### Most Serious Offense Category

MSO Group	Number	Percent
Drugs	129	24.1%
Theft	100	18.7%
Burglary	69	12.9%
Assault	57	10.6%
Robbery	50	9.3%
Motor Vehicle	48	9.0%
Fraud	22	4.1%
Weapons	22	4.1%
Other	15	2.8%
Sex Offenses	11	2.1%
Homicide	9	1.7%
Morals	2	0.4%
Restraint	2	0.4%
<b>Grand Total</b>	<b>536</b>	<b>100.0%</b>

### County Paroled To

County Paroled To	Number	Percent
Adams	17	3.2%
Box Butte	3	0.6%
Buffalo	10	1.9%
Burt	1	0.2%
Butler	1	0.2%
Cass	2	0.4%
Cherry	1	0.2%
Clay	2	0.4%
Colfax	2	0.4%
Data Unavailable	15	2.8%
Dawson	5	0.9%
Dodge	7	1.3%
Douglas	188	35.1%
Furnas	1	0.2%
Gage	8	1.5%
Greeley	1	0.2%
Hall	27	5.0%
Hamilton	2	0.4%
Holt	1	0.2%
Howard	2	0.4%
Jefferson	3	0.6%
Keith	1	0.2%
Kimball	1	0.2%
Knox	1	0.2%
Lancaster	147	27.4%
Lincoln	10	1.9%
Madison	18	3.4%
Merrick	1	0.2%
Morrill	1	0.2%
Nemaha	1	0.2%
Otoe	1	0.2%
Out of State	11	2.1%
Phelps	1	0.2%
Platte	2	0.4%
Red Willow	1	0.2%
Sarpy	11	2.1%
Saunders	1	0.2%
Scotts Bluff	14	2.6%
Seward	1	0.2%
Sheridan	1	0.2%
Sherman	2	0.4%
Thayer	2	0.4%
Washington	3	0.6%
Webster	1	0.2%
York	4	0.7%
<b>Grand Total</b>	<b>536</b>	<b>100.0%</b>



## Parole Revocations - FY2014 Statistical Reports

### Minimum Sentence

Years	Number	Percent	Cumulative Number	Cumulative Percent
1 Yr or Less	17	3.1%	17	3.2%
1.01-2.00 Yrs	141	26.5%	158	29.5%
2.01-3.00 Yrs	68	12.5%	226	42.2%
3.01-4.00 Yrs	97	18.4%	323	60.3%
4.01-5.00 Yrs	41	7.7%	364	67.9%
5.01-6.00 Yrs	38	7.1%	402	75.0%
6.01-7.00 Yrs	23	4.4%	425	79.3%
7.01-8.00 Yrs	10	1.9%	435	81.2%
8.01-9.00 Yrs	18	3.5%	453	84.5%
9.01-10.00 Yrs	4	0.8%	457	85.3%
10.01-11.00 Yrs	23	3.8%	480	89.6%
11.01-12.00 Yrs	12	2.1%	492	91.8%
12.01-13.00 Yrs	4	0.8%	496	92.5%
13.01-14.00 Yrs	4	0.8%	500	93.3%
14.01-15.00 Yrs	3	0.6%	503	93.8%
15.01-16.00 Yrs	6	1.2%	509	95.0%
16.01-17.00 Yrs	4	0.8%	513	95.7%
17.01-18.00 Yrs	3	0.6%	516	96.3%
18.01-19.00 Yrs	1	0.2%	517	96.5%
19.01-20.00 Yrs	1	0.2%	518	96.6%
20+ Years	18	3.3%	536	100.0%

### Maximum Sentence

Years	Number	Percent	Cumulative Number	Cumulative Percent
1.01-2.00 Yrs	9	1.7%	9	1.7%
2.01-3.00 Yrs	21	4.0%	31	5.8%
3.01-4.00 Yrs	49	9.4%	82	15.2%
4.01-5.00 Yrs	57	10.9%	140	26.1%
5.01-6.00 Yrs	86	16.5%	228	42.6%
6.01-7.00 Yrs	54	10.4%	282	53.0%
7.01-8.00 Yrs	21	4.0%	305	57.0%
8.01-9.00 Yrs	32	6.1%	338	63.1%
9.01-10.00 Yrs	19	3.6%	358	66.8%
10.01-11.00 Yrs	38	7.3%	396	74.1%
11.01-12.00 Yrs	12	2.3%	408	76.4%
12.01-13.00 Yrs	13	2.5%	421	78.9%
13.01-14.00 Yrs	6	1.2%	427	80.0%
14.01-15.00 Yrs	7	1.3%	434	81.4%
15.01-16.00 Yrs	14	2.7%	449	84.1%
16.01-17.00 Yrs	8	1.5%	457	85.6%
17.01-18.00 Yrs	2	0.4%	459	86.0%
18.01-19.00 Yrs	4	0.8%	463	86.8%
19.01-20.00 Yrs	2	0.4%	465	87.1%
20+ Years	65	12.5%	534	99.6%
Life	2	0.4%	536	100.0%

## Nebraska Department of Correctional Services

### 3-Year Recidivism Data Report FY2008 to FY2011

Pop:	Releases				Recidivists				Technical Violators				% Recidivism			
	FY08	FY09	FY10	FY11	FY08	FY09	FY10	FY11	FY08	FY09	FY10	FY11	FY08	FY09	FY10	FY11
<b>FEMALES</b>																
Paroles	169	117	131	185	17	21	19	25	29	11	11	19	27.4	22.9	25.8	23.8
Mand Discharges	<u>159</u>	<u>159</u>	<u>109</u>	<u>130</u>	<u>20</u>	<u>12</u>	<u>13</u>	<u>14</u>	<u>n/a</u>	<u>n/a</u>	<u>n/a</u>	<u>n/a</u>	<u>12.6</u>	<u>7.5</u>	<u>11.9</u>	<u>10.8</u>
<b>TOTAL</b>	328	276	240	315	37	33	32	39	29	11	11	19	20.1	15.9	17.9	18.4
<b>MALES</b>																
Paroles	711	717	778	1036	148	159	192	202	119	101	107	145	37.6	36.3	38.4	33.5
Mand Discharges	<u>1003</u>	<u>893</u>	<u>955</u>	<u>911</u>	<u>193</u>	<u>188</u>	<u>205</u>	<u>218</u>	<u>n/a</u>	<u>n/a</u>	<u>n/a</u>	<u>n/a</u>	<u>19.2</u>	<u>21.1</u>	<u>21.5</u>	<u>23.9</u>
<b>TOTAL</b>	1714	1610	1733	1947	341	347	397	420	119	101	107	145	26.8	27.8	29.1	29.0
<b>FEMALES &amp; MALES</b>																
Paroles	880	834	909	1221	165	180	211	227	148	112	118	164	35.6	35.0	36.2	32.0
Mand Discharges	<u>1162</u>	<u>1052</u>	<u>1064</u>	<u>1041</u>	<u>213</u>	<u>200</u>	<u>218</u>	<u>232</u>	<u>n/a</u>	<u>n/a</u>	<u>n/a</u>	<u>n/a</u>	<u>18.3</u>	<u>19.0</u>	<u>20.5</u>	<u>22.3</u>
<b>TOTAL</b>	2042	1886	1973	2262	378	380	429	459	148	112	118	164	25.8	26.0	27.7	27.5

A **recidivist** is defined as: being released to the community, and then being recommitted for new crimes or for technical violations within 3 years of their release date.