

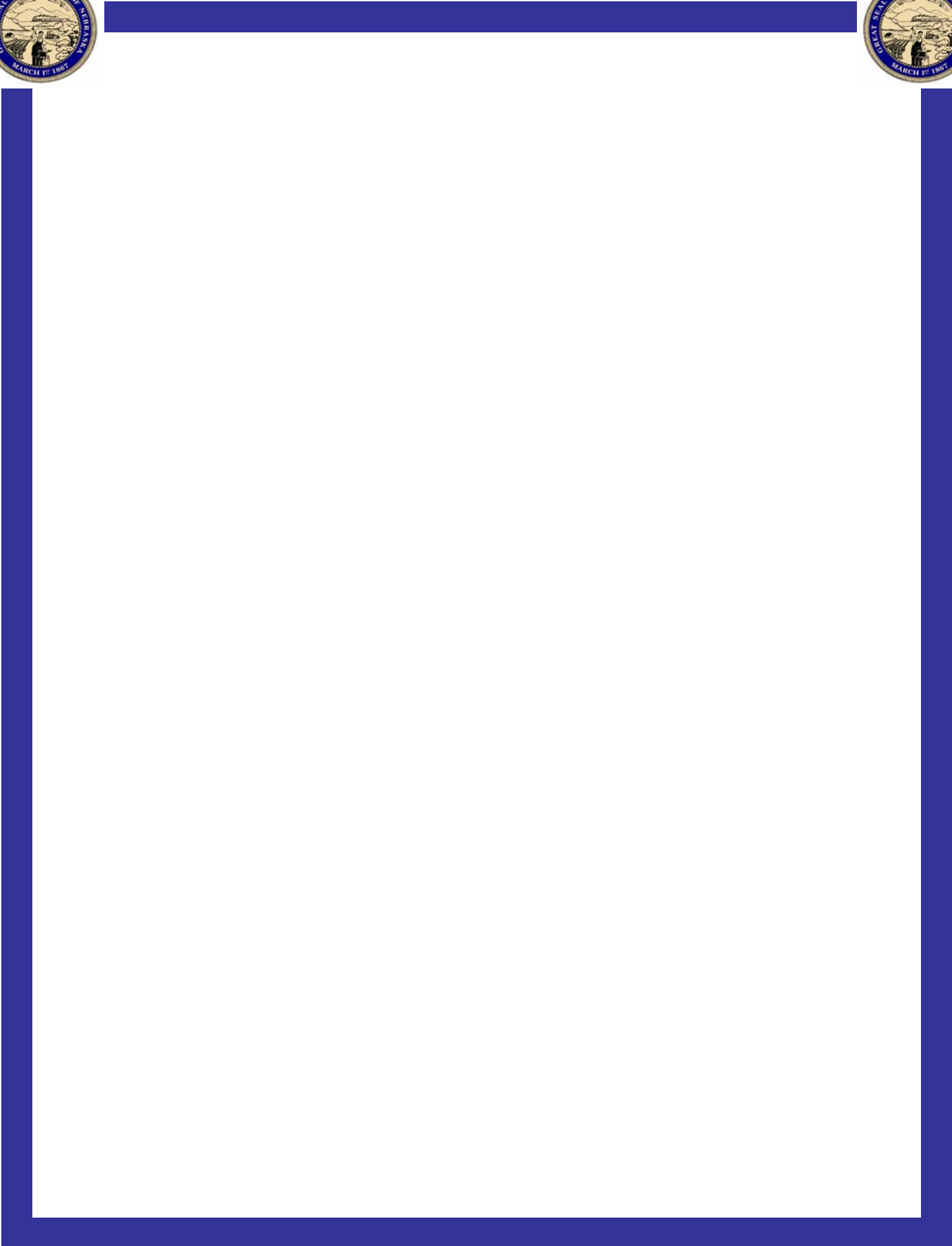
2010



*NEBRASKA DEPARTMENT
OF CORRECTIONAL SERVICES*

36th

Annual Report
and
Statistical Summary





Department of Correctional Services Directory

Agency 46



Department of Correctional Services

P.O. Box 94661

Location: Folsom & W. Prospector Pl.

Lincoln, NE 68509-4661

Building #1

(Lincoln Regional Center Campus)

TDD (402)479-5895

FAX Numbers:

Main Fax-Lobby 402-479-5119

Director's Office 402-479-5623

ROBERT P. HOUSTON, Director 402-471-2654

Deputy Director, Administrative Services, Robin Spindler

Deputy Director, Institutions, Frank X. Hopkins

Deputy Director, Programs and Community Services, Larry Wayne

Deputy Director, Health Services, Randy Kohl, MD

Deputy Director, Cornhusker State Industries, John McGovern

Accounting and Finance Manager..... Inga Hookstra
 ADA Coordinator/Victim Assistance Program..... Elizabeth Jeanette
 Adult Parole Administrator Cathy Gibson-Beltz
 Budget Management Analyst Kate Morris
 Corrections Programs Administrator Layne Gissler
 Director of Nursing..... Diana Tomek
 Facilities Engineering Manager..... Douglas K. Hanson
 Human Resources Administrator Marian Layman
 Information Systems Administrator..... Robert Shanahan
 Legislative Liaison Dawn Renee Smith
 Legal Division George Green
 Emergency Management Supervisor..... Brad Hansen
 Materiel Administrator Mary Carmichael
 Grants Administrator..... Steve Weis
 Planning, Research and Accreditation..... Steve King
 Organizational Development /
 Staff Training Academy Mikki Kirkpatrick
 Records Administrator..... Kyle Poppert
 Safety/Sanitation Coordinator..... Steve Vodicka
 Special Services Administrator Terry Ewing
 Behavioral Health Administrator..... Cameron White, PhD
 Behavioral Health Asst Administrator for
 Mental Health Director Mark Weilage, PhD
 Behavioral Health Asst Administrator for
 Substance Abuse Program Richard Thomas, PhD
 Behavioral Health Asst Administrator for
 Psychiatry Mohammed Kamal, MD

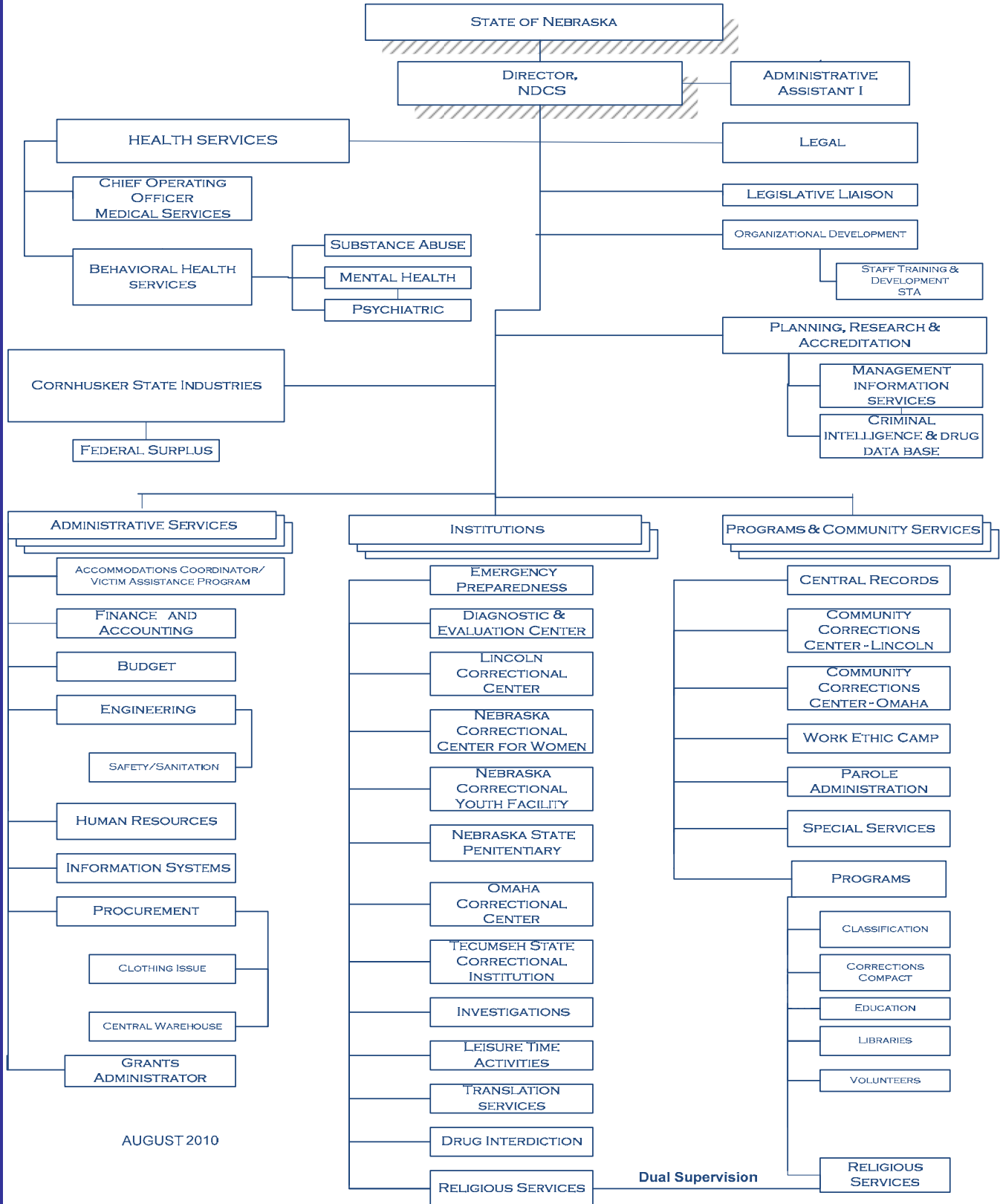
THIS PUBLICATION WAS PREPARED BY
 NEBRASKA DEPARTMENT OF CORRECTIONAL SERVICES,
 PLANNING, RESEARCH AND ACCREDITATION



Nebraska Department of Correctional Services Organizational Chart



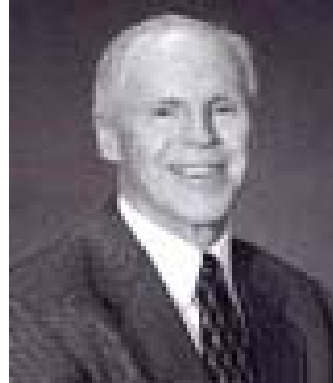
NEBRASKA DEPARTMENT OF CORRECTIONAL SERVICES



AUGUST 2010



Director
Nebraska Department of Correctional Services



Robert P. Houston

Director Houston was appointed as Director by Governor Dave Heineman effective March 14, 2005. Immediately preceding his appointment, he was Director of the Douglas County Department of Corrections having served in that position since April 2003. He started his state corrections career in 1974 as a counselor at the Nebraska State Penitentiary. In the years that followed, he held progressively more responsible positions throughout the Agency to include Unit Manager at the Lincoln Correctional Center, Unit Administrator at the Nebraska State Penitentiary, Associate Superintendent at the Omaha Correctional Center, Deputy Warden at the Penitentiary, Warden at three institutions Omaha Correctional Center, Lincoln Correctional Center, and Nebraska Correctional Youth Facility and from September 2002 to April 2003 he served as the Assistant Director for Programs and Community Services. Mr. Houston serves on many boards and committees including the Jail Standards Board, the Crime Commission, the Community Corrections Council, the Capitol Facilities Planning Committee, and the Interstate Compact for Adult Offender Supervision. He is the Co-Founder and Member of the Omaha's Metropolitan Chief's Association, Board President of the UNO/UNL Criminal Justice Education Fund within the University of Nebraska Foundation, past president of the United State's Deputy Warden's Association and the Nebraska Correctional Association. He served both as an auditor for the American Correctional Association (ACA) and as a consultant for the National Institute of Corrections (NIC).

Mr. Houston has a Bachelor of Science in Criminal Justice from the University of Nebraska-Omaha and a Master of Science in Criminal Justice from the University of Nebraska where he served as a part time instructor from 1984 to 2005.



Director's Perspective



I continue to be very proud to be a member of one of the very best correctional systems in the nation, the Nebraska Department of Correctional Services (NDCS). I present to you this 2010 Annual Report. Whether you are a NDCS staff member, researcher, legislator, student or member of the Nebraska community, please be assured that our Department employs the Nation's finest correctional practitioners to meet difficult challenges. Our rich history extends back to 1851 when we served as the Nebraska Territory Prison. Today, we are the State's largest criminal justice agency. NDCS maintains a firm commitment to provide effective protection for our citizens and high quality operations as was recognized three years ago when our Department received the "Eagle Award". We are now part of the small but elite group of prison systems in the nation that are 100 percent fully accredited by the American Correctional Association.

As our inmate population grew, we responded with two legislative bills that have allowed us to house parole pending inmates at our Work Ethic Camp (WEC) in McCook, Nebraska. We attend to the needs of county jails by providing jail management, leadership, emergency preparedness and assist with medication aide training throughout the year. We engage in strategic planning with Nebraska Probation and the Community Corrections Council to expand community resources and to stem the growth in our inmate population. Our Department is determined to lower the cost of government while protecting the public. We are fully engaged in exploring front-end, in process and back-end solutions to crowding.

Each day we keep inmates engaged in meaningful and fulfilling jobs, programs and activities that contribute directly to our level of safety, security and order. In 2010, we experienced a significant drop in uses of force and assaults by inmates on other inmates and staff. We attribute improved safety to the success of our mental health units and improvements in safety procedures. The hard work and effort by Departmental staff assigned to Cornhusker State Industries (CSI) has increased the number of inmates employed by Industries. Our Department's education program is certified by the Nebraska Department of Education. Programming staff contribute by providing programs and by preparing outstanding volunteers to serve a unique role in support of inmates and the Department. NDCS continues to expand re-entry activities. We have more than doubled the size of our residential treatment for substance abuse. We now have residential mental health units for both male and female inmates.

Our Strategic Master Plan provides a plan for the Agency's future needs. We are confident that Nebraskans are intent on having an even safer state while lessening our reliance on incarceration.

I am very pleased that you are taking the time to study our Department's challenges and accomplishments. Please call me at 402-479-5710 if I can assist in any way.



Table of Contents



Agency Directory 1

Organizational Chart 2

Director’s Bibliography and Perspective 3-4

TABLE OF CONTENTS 5-7

SECTION I

Annual Cost Report..... 8

Employee Awards 9

SECTION II

NDCS Mission Statement..... 11

NDCS Ethics..... 12

NDCS Vision Points 13-15

Providing Opportunity 16

ADMINISTRATIVE SUPPORT..... 17

Legal 18

Legislative Coordinator 18

Planning ,Research and Accreditation 19-21

Staff Training Academy / Organizational Development 22-23

SECTION III

DEPUTY DIRECTORS 25

ADMINISTRATIVE SERVICES..... 27

Accommodations Coordinator/Victim Assistance Program 28

Finance and Accounting 28

Budget..... 29

Engineering 29

Safety/Sanitation 29

Human Resources 30

Agency Employee Profile 31

Procurement..... 32

Grants Administration 32

Information Systems 33



Table of Contents



DEPUTY DIRECTOR OF INSTITUTIONS..... 35

Diagnostic and Evaluation Center 36

Lincoln Correctional Center..... 37

Nebraska Correctional Center for Women 38

Nebraska Correctional Youth Facility 39

Nebraska State Penitentiary 40

Omaha Correctional Center 41

Tecumseh State Correctional Institution 42

Programs and Services under supervision of Deputy Director of Institutions..... 43-44

Religious Services—Interpretation/Translation Services—Emergency Preparedness—
Investigations—Drug Interdiction—Leisure Time Activities—NDCS Security Manual

DEPUTY DIRECTOR OF PROGRAMS AND COMMUNITY SERVICES 45

Community Corrections Center-Lincoln 46

Community Corrections Center-Omaha 47

Work Ethic Camp 48

Adult Parole Administration 49

Central Records..... 50

Inmate Classification..... 50

PROGRAMS ADMINISTRATOR 50

 Corrections Compact..... 50

 Education 51

 Self-Betterment 51

 Volunteers 51

 Libraries..... 51

Reentry 52

Inmate Transportation and Extradition 52

Educational Programming offered..... 53-54

DEPUTY DIRECTOR OF HEALTH SERVICES 55

Description of Activities..... 56

Goals and Objectives..... 57

Performance and Evaluation Measures..... 57

Services provided..... 57

Behavioral Health Programming/Services 58

Substance Abuse Services..... 59

Behavioral Health Programming Offered by Institution 59

DEPUTY DIRECTOR OF CORNHUSKER STATE INDUSTRIES..... 61

Cornhusker State Industries 62

Federal Surplus..... 62



Table of Contents



STATISTICAL SUMMARY

SECTION IV

Admissions and Releases	65
Average Monthly Population.....	66

SECTION V

TOTAL POPULATION

FEMALE	67
MALE	71
PAROLE.....	74

SECTION VI—ADMISSIONS

NEW SENTENCED ADMISSIONS	77
REVOCATION ADMISSIONS.....	80
EVALUATORS/SAFEKEEPERS ADMISSIONS	84
WORK ETHIC CAMP ADMISSIONS	85

SECTION VII — RELEASES

INSTITUTIONAL RELEASES.....	87
EVALUATORS AND SAFEKEEPERS RELEASES	90
WORK ETHIC CAMP RELEASES	92

SECTION VIII COMMUNITY CORRECTIONS

COMMUNITY CORRECTIONS	94
-----------------------------	----

SECTION IX PAROLE

PAROLE ADMISSIONS	96
PAROLE DISCHARGES.....	99
PAROLE REVOCATIONS.....	103

SECTION X—RECIDIVISM REPORT

Recidivism Data	106
-----------------------	-----

Nebraska Department of Correctional Services Annual Cost Report Fiscal Year 2010

The graph below represents an allocation of all expenditures for all budgeted fund types for the Department of Correctional Services for the fiscal year. All direct and indirect expenses are allocated proportionately to the facilities indicated below, except that Education expenses are direct costs at NCYF & NCCW. The cost per inmate represents an average cost per inmate of all general, cash and federal expenditures excluding General Fund Aid & Depreciation & Capital Construction expenditures.

FY 2010	Personal Services	Operations	Trans- portation ¹	SpecPro- & Equip Fund	Health Services ²	Education ³ Sal & Oper	Admin ⁴	Total	cost/day per inmate	cost/yr per inmate
Neb Corr Youth Facility	4,076,597	602,953	22,438	45,392	618,072	279,136	466,846	6,111,434	184.24	\$67,247
Tecumseh Corr Center	21,259,938	3,987,422	81,523	187,099	6,292,056	401,502	2,632,075	34,841,615	103.18	\$37,660
Community Corr Ctr LNK	2,683,971	803,323	67,700	21,837	2,527,717	161,296	378,097	6,643,941	48.98	\$17,876
Community Corr Ctr OMA	1,517,280	410,979	58,099	28,987	1,061,360	67,726	209,410	3,353,841	58.88	\$21,491
Neb State Penitentiary	23,282,021	4,492,143	24,199	260,998	7,536,294	480,898	2,909,361	38,985,914	96.39	\$35,182
Neb Corr Ctr for Women	6,630,660	1,043,289	23,512	50,654	1,803,618	115,091	801,095	10,467,919	108.14	\$39,472
Diagnosis & Eval Ctr	6,881,113	1,554,833	9,076	38,474	2,433,932	155,311	879,345	11,952,084	91.50	\$33,397
Lincoln Correctional Ctr	11,828,177	2,486,900	15,295	161,753	3,303,912	210,826	1,487,804	19,494,667	109.94	\$40,129
Omaha Correctional Ctr	9,049,423	2,362,642	41,774	69,674	4,462,390	284,749	1,198,767	17,469,419	72.94	\$26,625
Work Ethic Camp ⁵	3,582,660	577,072	90,288	39,845	852,366	54,390	440,572	5,637,193	51.35	\$18,741
Adult Parole ⁶	2,217,284	763,614	111,246	17,104	0	0	317,271	3,426,519	9.75	\$3,560
Total Programs	93,009,124	19,085,170	545,150	921,816	30,891,717	2,210,925	11,720,643	158,384,545	\$78.83	\$28,773
Total w/o parole								154,958,026	\$93.47	\$34,115
Federal Surplus Property	254,425	454,514	5,061	0	0	0	65,920	779,920	n/a	n/a
Central Warehouse	0	1,769,640	0	0	0	0	163,382	1,933,022	n/a	n/a
Correctional Industries	4,641,246	6,225,396	83,311	90,767	0	0	1,019,337	12,060,057	n/a	n/a
Subtotal	4,895,671	8,449,550	88,372	90,767	0	0	1,248,639	14,772,999	n/a	n/a
Community Based Services		111,847	0	0	0	0	0	111,847	n/a	n/a
Building Depreciation		45,085	0	0	0	0	0	45,085	n/a	n/a
County Jail Reimbursement		3,812,250	0	0	0	0	0	3,812,250	n/a	n/a
Construction Programs		0	0	1,254,002	0	0	0	1,254,002	n/a	n/a
Other Subtotal	0	3,969,182	0	1,254,002	0	0	0	5,223,184	n/a	n/a
Total	97,904,795	31,503,902	633,522	2,266,585	30,891,717	2,210,925	12,969,282	178,380,728	n/a	n/a

1 includes \$582,980 of expense for State owned vehicles. 2 includes medical, mental health and substance abuse expenditures. 3 includes salaries, benefits and operating of all education programs, allocated to each facility, except that at NCYF they were mostly direct costs. 4 includes indirect expenditures allocated from Central Administration program and all expenditures from the Byrne Grants program. 5. Cost per inmate at WEC calculated based on average number of probationers and inmates times the average length of program, which is five months. Before 2009, counts were based only on admissions, due to the varied lengths of stay. 6. LSO numbers are not included in the total parolee numbers.

These averages can not be used to calculate reductions in inmate populations and corresponding reductions in expenditures. E.g. if you reduced a facility's population by 100, you could not use that facility's average cost per inmate per year times 100 to calculate the estimated reduction in expenditures.



Employee awards—2010



Michele Hillman, Outstanding Ambassador; Robert Madsen, Leadership; Mike Galyen, Community Service; Michael Kircher, In the Line of Duty; Boris Ilic, Field Training Officer

Partnership Award
Director Robert P. Houston, Bill Nelson, Governor Dave Heineman, Gregg Nicklas, Jim Erwin



Employees of the Year

Front: Brianna Chase, Cindy Edwards, Ilia Minary, Diana Nelsen
Back: Mark Rumery, Dave Jorgensen, Chris Sargent, Melissa Slade
Not pictured: Helen Torres

Supervisors/Managers of the Year
Front: TJ Von Seggern, Sheryl Tyrrell, Heather Kienow, Shawn Sherman
Back: Scott Strode, Byron Brown, Steve Hunzeker, Layne Gissler
Not pictured: Scott Isherwood



Team Award
Front: Mike Kenney, Megan Cruickshank (for Rich Cruickshank), Robin Spindler
Middle: Diane Sabatka-Rine, Charlie Rine, Matt Heckman, Shannon Rowen
Back: Brian Gage, Robert Madsen, John Dahm, Charlie West
Not pictured: Carla Vance, Dominic Witherspoon, George Green, Marian Layman





MISSION STATEMENT

The Mission of the Department of Correctional Services is to serve and protect the public by providing control, humane care, and program opportunities for those individuals placed in its custody and supervision, thereby facilitating their return to society as responsible persons.



NDCS Ethics



Nebraska Department of Correctional Services Ethics

We respect and protect the safety and rights of the public we serve.

We respect the importance of all programs/departments, within and outside of the Agency, in order to facilitate good communication and cooperation.

We respect and protect the civil and legal rights of all individuals. We will not use any type of cruel, inhumane or corporal punishment, excessive force or in any way mistreat individuals under the Agency's custody and control.

We preserve the integrity of private information.

We make all appointments, promotions and dismissals in accordance with rules, laws, and merit, rather than the furtherance of personal interest or favoritism.

We promote and contribute to a work place that is safe, healthy, and free of harassment in any form. We will not discriminate against any person because of race, sex, color, religion, ancestry, national origin, disability or age.

We keep conversations with all persons on a professional level at all times. We will not use profane or abusive language toward others. We communicate in a way that promotes respect and maintains satisfactory working relationships.

We will not bring in any type of contraband to an Agency facility/program area.

We will not use personnel, property, resources, or funds other than in accordance with prescribed constitutional, statutory, and regulatory procedure. We will be good stewards of state resources, including efficient use of our work time.

We maintain professional and credible behavior by exemplifying the Agency's Mission Statement and Vision Points.



**NDCS
Vision Points**

1994-2004

2004-Present



NDCS Vision Points



The first six vision points identified in 1994 have been incorporated into every facet of the NDCS, and continues to be a vital part of the Agency.

STAFF DEVELOPMENT AND PERSONAL MASTERY

To recruit and retain, at all levels, individuals diverse in background. To develop and maintain a positive environment and comprehensive training program that will enhance each employee's potential to achieve personal mastery.

HEALING ENVIRONMENT

NDCS strives to create and maintain an environment in which healing is paramount and inmates are able to acquire necessary skills, education/tools and treatment.

SHARED VALUES

Recognizing the inherent respect due all persons, the NDCS believes:

- ◆ Staff, volunteers and inmates have value and an opportunity to uniquely contribute to achieving our mission.
- ◆ Achieving our mission depends on teamwork in an environment of openness, inclusion, honesty, integrity and commitment.
- ◆ Leadership is a responsibility shared by all.
- ◆ Everyone has the potential to make positive changes in their attitudes, life skills, and conduct.
- ◆ Each of us should be accountable to ourselves and the public for the effective and efficient use of our time and all available resources to accomplish our mission.
- ◆ We must play an instrumental role in helping the community recognize its responsibility as a partner in achieving our mission.

CONTINUOUS QUALITY IMPROVEMENT

It is the vision of NDCS to foster the Continuous Quality Improvement journey, thereby creating an environment that is system-centered, which:

- ◆ supports Agency values and mission;
- ◆ opens communication;
- ◆ removes barriers at all levels;
- ◆ creates cooperative partnerships, trust, and respect;
- ◆ fosters ownership, commitment; and
- ◆ recognizes the leader in all of us.

CREDIBILITY

Proactively increase the NDCS' credibility and support both internally and externally.

COMMUNITY CORRECTIONS

The NDCS will promote community corrections and alternatives to incarceration. The NDCS will seek partnership with the private sector to create a continuum of sanctions and program opportunities during and subsequent to incarceration to facilitate successful re-entry into society.

- ◆ Create a partnership with private sector – to create work programs and treatment opportunities during and subsequent to incarceration.
- ◆ NDCS will promote community corrections and intermediate sanctions and alternatives to incarceration.



CREDIBILITY

We commit ourselves to furthering public trust and credibility

SEAMLESS CRIMINAL JUSTICE SYSTEM

We commit ourselves through collaboration with other entities to create a seamless criminal justice system within a restorative justice framework

COMMUNITY AWARENESS AND INVOLVEMENT

We commit ourselves to partnering with the community to encourage awareness and involvement toward the successful reintegration of offenders

BEST PRACTICES

We commit ourselves to identifying and implementing best practices

FISCAL ACCOUNTABILITY

We commit ourselves to fiscal accountability and cost efficient and effective operations

OFFENDER ACCOUNTABILITY

We commit ourselves to developing and maintaining environments in which offender accountability will flourish

FAMILY INVOLVEMENT

We commit ourselves to developing and fostering strategies that allow families an active role in the offenders' incarceration and reintegration

COMMITMENT TO STAFF

We commit ourselves to partnering with staff who strive to optimize their contribution to our mission and standards

OFFENDER PROGRAMS

We commit ourselves to creating and sustaining meaningful program opportunities for offenders



The LCC Mental Health Unit: Best Practices in Action

By Cameron S. White, Ph.D.
Behavioral Health Administrator

NDCS has a vibrant Behavioral Health section that has evolved over the last several years to be a leader in best practice treatment programs and interventions. Behavioral Health has placed an emphasis on providing treatment services to those with the greatest risks and needs which is consistent with the literature. The primary focus is to provide services to inmates with major mental illness. Other populations that are prioritized for treatment are inmates with a history of violence, those who have committed sexual offenses, and those with substance dependence issues. The ultimate goal is to provide high quality services which address risks and needs and fosters success beyond prison.

One of the most effective initiatives in Behavioral Health has been the expansion of the Mental Health Unit (MHU) at the Lincoln Correctional Center (LCC). In 2006 Mental Health began to systematically focus on inmates with major mental illness. This resulted in new processes to monitor and treat this special population. As part of this focus, the MHU at the Lincoln Correctional Center was expanded and its mission defined as one of providing treatment to high risk high need mentally ill inmates. The intensity of treatment increased with an emphasis on implementing best practice interventions. The goals of the program include helping inmates stabilize by learning about major mental illness and improving coping skills. The best possible mental health treatment occurs when a treatment team philosophy is used and many professionals are involved in the treatment process at the MHU. The LCC MHU has a wide variety of professional disciplines including psychiatry, psychology, social work, nursing, mental health practice, and substance abuse. Another critical focus at the MHU is to provide co-occurring disorder programming. The first fully integrated co-occurring program at NDCS was begun at the LCC MH Unit in 2010. This program, while small, followed the recognized best practice principles of focusing on both mental health and substance abuse issues simultaneously in a structured manner.

Although doubling the capacity of the Unit took a great deal of time and effort; the results have been excellent. For example, a recent review of misconduct report data and assault data indicates that there was a major reduction in these issues when the inmates had transferred to the MHU as compared to the time before they were on the MHU. This clearly shows the value of the MHU and the work being done there.



ADMINISTRATIVE SUPPORT

Legal

Legislative Liaison

Planning, Research and Accreditation

Organizational Development / Staff Training



NDCS Administrative Support



Legal Division
George Green, General Counsel 402-479-5735

The Legal Division supports all Department of Correctional Services programs and institutions by giving legal advice and representation regarding labor relations, inmate rights, contracts, legislative issues, inmate grievances, transportation orders, or matters involving litigation and the Courts. Legal Division staff work with the Courts, the Nebraska Department of Justice, attorneys, arbitrators, State Senators, the State Claims Board, the Office of Public Counsel, other State Agency officials, and the general public.

The Legal Division provides these services

- ◆ Decides administrative appeals filed by inmates from Institutional Disciplinary Committee decisions
- ◆ Investigates inmate grievances appealed to the Director
- ◆ Represents the Department before the State Claims Board
- ◆ Represents the Department before the Nebraska Equal Opportunity Commission
- ◆ Reviews legislative issues
- ◆ Advises Department staff on legal matters
- ◆ Promulgates rules under the Administrative Procedures Act
- ◆ Facilitates representation of Department staff by the Attorney General
- ◆ Conducts involuntary medication and involuntary transfer hearings for inmates
- ◆ Represents the Department in grievances under the State Personnel Rules or Labor Agreement
- ◆ Prepares and files with the courts transcripts for appeals filed under the Administrative Procedures Act contesting decisions of the Appeals Board
- ◆ Responds to requests for inmate records maintained by the Nebraska Department of Correctional Services
- ◆ Reviews employee discipline recommendations and workplace harassment allegations

FY2010 STATISTICS FROM THE LEGAL DIVISION

- * 684 inmate appeals of IDC decisions were heard by the Appeals Board.
- * 27 APA's (litigation filed in District Court under the Administrative Procedures Act) were filed in District Courts.
- * 983 Step-Two inmate grievances (appeals at the Director's level) were processed.
- * 189 Tort Claims/Miscellaneous Claims filed by inmates, staff, or members of the public were processed.

Legislative Coordinator/Public Information Officer
Dawn-Renee Smith 402-479-5713
dawnrenee.smith@nebraska.gov

The Legislative Coordinator is tasked with coordinating all aspects of the legislative process within the agency. She serves as a point of contact between the Department of Correctional Services, the Governor's Policy Research Office, and the Legislature. The Legislative Coordinator also serves as the Public Information Officer for the Agency and is a member of the agency's executive staff. She reports directly to the agency head.



NDCS Administrative Support



PLANNING, RESEARCH AND ACCREDITATION (PRA)

Steve King, Manager 402-479-5767

steve.king@nebraska.gov

The PRA Section supports all Department of Correctional Services programs and institutions through a number of responsibilities and services. These include: Accreditation, Strategic Planning, Policy, Applications Development, Statistical Reporting and Analysis, Information Assembly, Analysis, and Dissemination, Criminal Information Analysis and Reporting, Departmental Website, Inmate Drug Testing, Performance Based Measures System (PBMS), Key Indicators, and Research.

Planning, Research and Accreditation's efforts have helped guide the Department to become one of only 14 states to have their entire system accredited. This allows NDCS to proudly display ACA's Eagle Award given to each state who has reached this pinnacle of success and dedication. PRA staff and staff from every program and facility worked tirelessly during FY2010 conducting or being part of 14 internal audit teams. During that same time period, ACA sent external auditors in to 6 NDCS facilities with all of them being reaccredited. Finally, PRA and ACA managers successfully worked to identify 70 standards that qualified for Central Office Review thereby significantly saving time at the facility and program level.

PRA managed approximately 215 Administrative Regulations (A.R.'s) and 20 Policy Directives during the past fiscal year. Administrative Regulations and the process that governs their implementation, review, revision, and history are all critical to both accreditation and the smooth operation of the department's institutions and programs.

PRA continues to produce both legislatively mandated reports such as the Department's Annual Report and Statistical Summary, and the Annual Report on the Work Ethic Camp, as well as other reports and information summaries such as, the Monthly Data Sheet, the Annual Recidivism Report, Urine analysis Report, Misconduct Report Data, Population Report, Grievance Report Data, PBMS Related Report Data, Travel Order Statistics, and Facility Month-End Reporting just to name a few. These reports, statistical summaries, and data analysis are critical to good decision-making by both internal and external stakeholders.

On June 23, 2010, the NDCS became the first state in the country to be in 100% compliance with all Performance Based Measures System (PBMS) measures. PRA led the way in the effort by designing, implementing, and coordinating a department-wide effort to ensure compliance. The PBMS measures and the Key Indicators which are derived from these measures provide DCS with key measures/indicators that can be tracked and trended over time. The utility of the measures and indicators will only grow as time passes.

NDCS has also been a pioneer in the use of sophisticated data mining software which was part of a National Institute of Justice 'Data Mining Sharing Initiative Project.' This project has PRA to manipulate large multiple databases of inmate-related information for critical intelligence. PRA now works closely with NDCS investigators and local, regional, and national law enforcement in the sharing of information. The Federal Bureau of Investigation recently released a report on 'White Supremacists in Prison' which acknowledged NDCS' role in identifying four individuals who were involved in an illegal action against federal officials.

Finally, PRA has continued to expand critical application development capabilities on the Corrections Website. In 2009, PRA implemented an automated Misconduct Report and Routing System (MRRS) which tracked the institutional misconduct reports from writing, to hearings, through the Wardens approval process. The automation of this process tremendously enhanced NDCS' ability to glean data concerning the disciplinary process throughout all of the facilities. In addition to the MRRS system, PRA designed and implemented a new visitor tracking system in all facilities. This allowed the Department to track the actual visitors entering the facilities and accounting for the number and duration of visits. Currently, PRA is working on automating the Parole Board Review Process. Automation of this process will result in a significant savings in printing and staff time.



NDCS Administrative Support



PLANNING, RESEARCH AND ACCREDITATION (PRA) continued..

ACCREDITATION

James Foster 402-479-5810

The Nebraska Department of Correctional Services has been involved in the Accreditation process since 1979. All of the Department state institutions, Central Office, Staff Training Academy and Adult Parole Administration are accredited. After initial accreditation, institutions and programs are audited every three years in an effort to maintain accreditation. Accreditation offers the opportunity to evaluate the Department's operations against national correctional standards, remedy deficiencies, and upgrade the quality of correctional programs and services. Benefits of the accreditation process include improved management and conditions of confinement. Accreditation also increases accountability and enhances public credibility for administrative and line staff. The process provides for a safer and more humane environment for personnel and offenders. This process has assisted the Department by establishing criteria for upgrading programs, personnel and physical plant on a continuing basis.

American Correctional Association is revising all existing standards to facilitate performance measures. The move towards performance measures requires a "fundamental shift in thinking" for the field of corrections. Instead of showing standard compliance through activities or practices, a specified condition will need to be measured and achieved. Performance based standards require corrections to embrace the concepts of Continuous Quality Improvement and challenge the traditional ways of thinking and operating.

Performance based standards will not only affirm that the Department is meeting its mission, but provide a measurement of its efforts. Operational effectiveness and efficiencies will be measured over a three-year accreditation/audit period. The measurements will enable the Department to benchmark services and improve the quality of life for staff, inmates and the public. The Nebraska Department of Correctional Service is proud to be one of an elite group of states that have all their facilities and programs accredited through the American Correctional Association.

POLICY

James Foster 402-479-5810

The Department's Annual review of two hundred and twenty three (223) Administrative Regulations is coordinated through Planning, Research and Accreditation (PRA). Policy Directives issued from the Director are tracked by PRA for incorporation into Administrative Regulation Policy. PRA maintains the Agency's Administrative Regulation history file and updates Administrative Regulations and Policy Directives on the intra-agency network and the NDCS official web site.

ANNUAL REPORT AND STATISTICAL SUMMARY

James Foster 402-479-5810 Becki Hickman 402-479-5760

Planning, Research and Accreditation is responsible for compilation and distribution of the Annual Report and Statistical Summary.



NDCS Administrative Support



PLANNING, RESEARCH AND ACCREDITATION (PRA) continued..

APPLICATIONS DEVELOPMENT/STATISTICAL REPORTING

Becki Hickman 402-479-5760 BJ Spring 402-479-5662

During fiscal year 2010, the Nebraska Inmate Case Management System (NICaMS), managed by PRA, continued to expand with the addition of the following: Parole Information Management System (PIMS), Electronic MRRS Appeal System, Electronic Inmate Pass System. The Corrections Inmate Payroll (CIPS) was also implemented by the Accounting department. PRA set up the reporting functions within NICaMS.

New staff are now given access to NICaMS during pre-service at the Staff Training Academy to train on the Misconduct Reporting and Routing System.

PRA continues to provide information/data to other state and federal agencies, the State Legislature, researchers, national surveys and NDCS management staff.

CRIMINAL INFORMATION/DRUG TESTING

Jeff Peterson 402-479-5912
Jeff.a.peterson@nebraska.gov

In FY2004, the NDCS was chosen by the National Institute of Justice for a Data Mining Sharing Initiative Project. The goal was to assess, review analytical & presentation software, and review data mining capabilities of intelligence/information data that would assist local and regional law enforcement.

Since then, we have taken various steps to share Intelligence/Information data with local, State, and Federal law enforcement entities. During 2009, NDCS continued sharing Intelligence/Information data with various agencies to better serve the State of Nebraska. This is being done with the Criminal Analyst working closely with the NDCS investigators, continued networking and communication with law enforcement agencies and the sharing of data through the NIJ Data Mining Sharing Initiative Project. NDCS will continue to provide NDCS Intelligence/Information to the users with the greatest need in a timely manner.

Drug Testing

The NDCS' Inmate Random Drug Testing Positive Rate decreased for calendar year 2009. A total of 5911 Facility Random Drug Test was submitted with a positive rate of 1.02%. This compares with 1.20% for 2008, 1.27% for 2007 and 1.76% for 2006. NDCS continues to use all drug interdiction tools available to maintain a safe and drug free Department.

The department remains committed to a zero tolerance drug policy.

Performance Based Measurement System

BJ Spring 402-479-5662

NDCS continues to support the Association of State Correctional Administrators (ASCA) by inputting statistical data into the Performance Based Measurement System (PBMS). The PBMS systematically collects, manages and shares data across jurisdictions, enabling administrators to identify strengths and weaknesses internally and in comparison with other correctional systems. Its purpose is to develop consistent and meaningful correctional performance measures for adult prisons and community-based programs and to develop an automated system that would enable the collection, management, and sharing of that data – specifically in the areas of Public Safety, Institutional Safety, Mental Health and Substance Abuse, Justice, Academic Education, Health Care, and Offender Profile/Contextual data.

In early 2009, NDCS joined a 3-Year ASCA PBMS Strategic Management group, tasked with planning for improvements and enhancements of the PBMS. In 2009, NDCS continues to redevelop our information gathering practices to incorporate current and future PBMS needs. In the near future, ASCA will add Fiscal and Personnel measures into the PBMS.

NDCS Administrative Support



Staff Training Academy (STA)

2320 N. 57th Street

Lincoln, NE
402-471-1781

Training & Development Manager

Ken Sturdy

The Academy offers or helps coordinate the following:

Pre-Service Training
In-Service Training
Leadership/Quality Courses
Field Training Officer (FTO) Schools
EAP courses bi-monthly for Support Staff
Instructor Schools
Seasonal Range classes
Special classes as needed

The Academy facility includes

Three large classrooms
Gymnasium
Large Breakroom
Firearms Simulator system
4 inmate cells for training scenarios
Conference Room
Resource Center
103 stall parking lot
Internet access in each classroom
and research area

Training Specialists

Levi Bennett

William Boucher

Bruce Kramer

Susan Phinney

Jen Westwood

Secretary

Linda Schwaninger



NDCS Administrative Support



ORGANIZATIONAL DEVELOPMENT
Mikki Kirkpatrick , Organizational Development Manager 402-479-5660

The purpose of Organizational Development is to continue to facilitate a Total Quality approach of organizational transformation at the Nebraska Department of Correctional Services by evaluating current policy and practice.

NDCS continues to work towards an agency-wide transformation in which we shift how we fundamentally think and work together. To date, several integrated initiatives have been designed and implemented to aid in this transformation.

Continuous Quality Improvement (CQI) CQI is a philosophy and strategy for continuously improving performance at every level of the organization and in all areas of responsibility. CQI is a total systems approach that promotes innovation, leadership, creativity and personal mastery. There are several active Quality Councils in the Department and training efforts are continuous. Courses offered include Quality Awareness, Teams, Tools, and Techniques, Meeting Facilitation, Excelling as a First Time Supervisor, and Correctional Leadership I and Advanced Correctional Leadership courses.

Diversity - This initiative was first identified in 1991 and established in 1992 and has involved extensive work including diversity training, a work environment survey, policy revisions, and awareness efforts. In addition, the Department recognized that its strength and its major resource in achieving goals and objectives is the agency's staff. Human relationships provide the cornerstone of all Departmental efforts. Work continues in recruiting, retaining, and training culturally and ethnically diverse staff.

Leadership Program - Beginning in 2006, the Department started putting selected middle level management through a leadership program. This program is a part of the Department's Succession Planning, which includes course curriculum, college courses, job challenges and job shadowing to develop leaders for the future.





Deputy Directors

Robin Spindler, Administrative Services

Frank X. Hopkins, Institutions

Larry Wayne, Programs and Community Services

Dr. Randy Kohl, Health Services

John McGovern, Cornhusker State Industries





Deputy Director of Administrative Services



The Deputy Director of Administrative Services is responsible for the oversight of the following programs and areas:

Budget Administration

Purchasing/Inventory

Accounting and Finance

Information Systems

Engineering

Safety and Sanitation

Accommodations Coordinator

Human Resources

Grants

Victim Assistance Program

Deputy Director Spindler has worked for the Nebraska Department of Correctional Services for over 20 years. She began her correctional career at the Omaha Correctional Center and has worked in various positions since that time.

Deputy Director Spindler has taught classes at Bellevue University and Kaplan University.

Deputy Director Spindler earned a Juris Doctorate in 1984.

She was appointed Deputy Director of Administrative Services in August of 2005





NDCS Administrative Services



ACCOMMODATIONS COORDINATOR /VICTIM ASSISTANCE PROGRAM Elizabeth Jeanette 402-432-5182

The Nebraska Department of Correctional Services is committed to ensuring that compliance to all aspects of the Americans With Disabilities Act (ADA) is met. The office of the ADA Coordinator responds to all requests for accommodation/s from NDCS employees, inmates and the public. It is also responsible for the development, review and revision of Departmental policies and procedures to ensure compliance. This Division is responsible for the Return To Work policy which assists employees injured on or off the job, or who have an illness that affects their ability to perform their job, to return to work in a modified status.

The Victim Assistance Program recently began instructing Victim Impact Classes for offenders at the Nebraska Correctional Youth Facility and the Omaha Correctional Center. The underlying goal of these classes is to help offenders develop empathy - making them more in tune to the humanistic harm caused when a crime is committed; thereby, reducing the likelihood of them committing future crimes inside and outside of the correctional facility. The heart of this program is having them listen and interact with victims who have been harmed by crime.

Services provided include:

- Crisis intervention throughout the corrections process, including assisting victims with concerns related to inmates and parolees under Nebraska’s jurisdiction;
- Community education about policies and procedures of the Nebraska Department of Correctional Services;
- Assistance preparing for parole hearings;
- Referrals to other state and local community services;
- Explanation and referral for restitution processing assistance; and
- Face-to-face meetings with the offender through Victim Offender Dialogue.

FINANCE AND ACCOUNTING Inga Hookstra, Controller 402-479-5756

The Accounting Division has responsibility for all financial and inmate accounting functions for the Nebraska Department of Correctional services. Additionally, the Accounting Division is responsible for establishing uniform accounting practices and procedures within the Department of Correctional Services consistent with state policy and practice, as well as generally accepted accounting principles. The Accounting Division is responsible for providing fiscal support to all programs and facilities within the Department and has the oversight for internal controls.

Financial Accounting functions include both accounts payable and accounts receivable. This includes payments for all goods and services received by the Department regardless of funding source, including verification that all payments are appropriate through the pre-audit process. Accounts Receivable covers all billings both internal and external to state government, including Cornhusker State Industries, Federal Surplus Property, and county safekeepers. Reports from the Enterprise One system are generated and made available to the various staff throughout the Department electronically.

Inmate Accounting provides for a system of accounting for all inmate funds through the Inmate Trust Fund and ledgers maintained in the Correctional Information and Tracking system. The functions include processing transactions related to the various accounts (institutional, confiscated, restitution, maintenance, suspense, savings, and legal) held by inmates; processing inmate payroll (both institutional and private venture); and reporting necessary to inmates, courts, and other authorized entities. Inmate Accounting also receipts, tracks and provides reports on parole programming fees.

The Accounting Division is also responsible for all fiscal reporting on grants and preparing various financial statements, including canteens, Cornhusker State Industries, and Federal Surplus Property. Additionally, claims are audited and processed in accordance with the law for the County Jail Reimbursement aid program. Other areas of responsibility include internal fiscal audits and risk assessment, Internal Control Team, Coordinating external financial audits, coordinating payroll reconciliation and verification, monthly Business Managers’ Meetings, and quarterly Canteen Supervisors Meetings.



NDCS Administrative Services



BUDGET

Kate Morris, Budget Management Analyst 402-479-5702

The Budget Management Analyst is responsible for planning, organizing, monitoring and reporting the Department's fiscal allocations and fiscal reporting systems. She also analyzes, manages and reviews the preparation, documentation, implementation and control of program budgets including the biennium and deficit budget processes. Fiscal and accounting data are compiled for use in budget evaluation and adjustment, cost analysis, budget projections and reporting. The area of responsibility also includes the fiscal note process.

ENGINEERING

Doug Hanson, Facilities Engineering Manager 402-479-5742

The engineering division provides the department with technical and facilities management assistance for construction projects of all sizes, from the preliminary planning stage to completion and readiness for occupancy. The engineering division is responsible for the development and implementation of the capital construction budget and deferred repair program for all state correctional facilities.

Facilities engineering works with the correctional administrators in the planning, design, construction and occupancy of new and remodeled facilities.

Engineering provides technical assistance for utility and energy contracts. The engineering staff provides guidance and technical assistance to the various facilities and programs to manage their maintenance programs. Engineering oversees the maintenance and custodial program (maintenance section) for the central administrative buildings.

The engineering division also has oversight of the safety and sanitation section. The safety and sanitation section is responsible for addressing the safety functions of NDCS, provides periodic inspections of all facilities, and provides assistance in the accreditation process. This section works closely with the state fire marshal's office and other regulatory agencies in the resolution of compliance issues involving all NDCS facilities.

SAFETY/SANITATION

Steve Vodicka 402-479-5778

This section is responsible to provide a secure and safe environment for both staff and inmates to realize individual potential. The safety and sanitation functions are accomplished through inspections of all facilities on a periodic basis. Administrative Regulations are developed and revised in order to comply with American Correctional Association (ACA) standards and other state and federal statutes, codes and regulations, Occupational Safety and Health Administration (OSHA) regulations, the National Electrical Code (NEC), and National Fire Protection Association (NFPA) standards. The Safety Coordinator conducts bi-annual Safety Awareness Training for employees, which covers all of the above mentioned regulatory agencies. The Safety Coordinator is a regular member of the NDCS internal auditing team and has responsibility for the Department's asbestos abatement program and environmental monitoring program



NDCS Administrative Services

HUMAN RESOURCES

Marian Layman, Human Resources and Development Administrator 402-479 5752



The Human Resources Section leads the effort in the recruitment and retention of quality staff for the Department of Corrections. These employees are dedicated to protecting the public, and to making a positive difference in the lives of others.

Human Resources staff provide services ranging from payroll administration, job classification, strategic management, and serve as a contact for employees facing illness or injured on the job.

Human Resources serve as consultants to all staff in areas of performance improvement through coaching, counseling, and if necessary, discipline. The main focus is the development of healthy working relationships through conflict resolution and immediate review of workplace allegations, as well as having policies which promote decision making at the lowest possible level.

Human Resources takes pride in keeping staff informed of agency functions like employee award and recognition activities, employee benefit programs, wellness promotions, and much more. This communication is achieved many ways, including: 1) agency email / notification of "Helpful Hints for Employees," and 2) a link to these articles and other key activities posted on the agency web site marked "Employee Information from HR."

Labor Relations is another avenue to retain and recruit quality staff. By use of Interest Based Bargaining in lieu of the traditional position bargaining, the agency created opportunities in solving problems and reaching solutions on issues of most importance to both parties.

With employee recruitment and retention being a shared responsibility, Human Resources partners with other areas of the agency. Examples of partnerships include: succession planning for promoting quality staff under our Annual Roster process; innovative recruitment page on the agency web site, returning employees to work through light duty assignment or ADA accommodations, and recognizing employee's contributions through on-site and agency wide recognition awards for outstanding individual achievement as well as team contributions.

Other services include: pre-employment and random drug testing, employee medical exam process as well as minimum physical standards, review of criminal records checks, and paid internships.

The Nebraska Department of Corrections Human Resources Section is looking towards the future through the establishment of a virtual employee personnel file, a streamlined employment application process, and an expanded Talent Management Software System accessible by all staff.

Note: Agency Employee Profile on Following Page



NDCS Administrative Services

HUMAN RESOURCES Continued



AGENCY EMPLOYEE PROFILE 2010

Agency Authorized FTE (FY 2009-2010):	2340.75
Authorized Custody FTE (CO, Cpl, Sgt):	1036.00
Authorized Unit Caseworker FTE:	231.00

Source: *EDGE Agency Budget Staffing Report dated August 10, 2010*

Agency Number of Vacant positions as of 8/16/10	119.75	(5.20%)
Custody Number of Vacant positions as of 8/16/10 (CO, Cpl, Sgt)	62.00	(6.10%)
Unit Caseworker Number of Vacant Positions as of 8/16/10	13.00	(5.70%)

Source: *EDGE Basic Comp Report dated August 16, 2010*

EEO STATISTICS:*

TOTAL:

White	1190
African American	111
Hispanic	80
Asian/Pacific Islander	23
Other	32

BY GENDER:

MALE:

White	1313
African American	73
Hispanic	59
Asian/Pacific Islander	20
Other	17

FEMALE:

White	677
African American	38
Hispanic	21
Asian/Pacific Islander	3
Other	15

*Source: *Basic Comp Report dated August 16, 2010*

TREATMENT STAFF**: (Numbers reflect "Authorized" FTE, not "Filled" FTE. The Authorized FTE reflects positions providing direct treatment, excluding administrative positions, e.g., Director of Nursing or Administrator of Substance Abuse, etc. Numbers do not include contracted Health Services for TSCI or OCC.)

Physicians	3
Psychiatrists	2
Physicians Assistants	8
Nurse Practitioner	1
Nurses (RN'S and LPN'S)	47
Dentists	5
Dental Assistants	4
Clinical Psychologists	14
Psychologists	5
Mental Health Practitioners	30
Substance Abuse Counselors	53
Master Social Workers	4
Teachers (Education Program)	28

**Authorized FTE Source: *Treatment Staff Position Report dated August 18, 2010*



NDCS Administrative Services

PROCUREMENT

Mary Carmichael, Materiel Administrator 402-479-5717

The Purchasing Section is responsible for procurement of all goods/services, inventory control processes, the operation of Staff Clothing-Issue, and the coordination of form usage within the Agency. The Materiel Administrator is responsible for the review, coordination and approval of all Purchasing functions of the Agency.

Purchasing actively pursues the acquisition of quality products and services at the most economical cost. This is done in part by assuring the accuracy of specifications, competitive bidding, quality control checks of deliverables, utilizing Department of Administrative Services (DAS) commodity contracts, coordinating shared contracts with other State agencies as appropriate, monitoring vendor and contractor performance and by utilizing Cornhusker State Industries as a preferred Agency source. NDCS Purchasing staff is responsible for ensuring products and services are delivered timely and received as ordered. They interact with facility and program staff to assure end-user needs are being met, to address procurement and/or receiving issues and to coordinate completion of Agency service contracts.

Inventory responsibilities include the tracking of all Fixed Assets and the formulation of standardized supply inventory practices throughout the Agency. Inventory actions involving NDCS owned property is monitored and annual reports regarding NDCS Fixed Assets are submitted to DAS as appropriate. The NDCS Materiel Control Manager is responsible for coordinating the motor vehicle needs of all NDCS facilities and programs. This includes monitoring vehicle mileage logs, coordinating movement of vehicles within the Agency, coordinating vehicle repairs, appropriate processing of accident reports and coordination of vehicle purchases/leases.

The NDCS Central Warehouse services all Lincoln facilities. The operation has a dual purpose – to fill facility and program requisitions from stock for standard, frequently used products and to receive all deliveries from outside vendors for each of the NDCS Lincoln locations.

All staff uniforms are issued and tracked through the centralized Clothing Issue operation. Clothing Issue is responsible for both the initial issue to new hires and replacements to existing staff.

GRANTS ADMINISTRATION

Steve Weis, Federal Aid Administrator III 402-479-5780

The Federal Aid Administrator III is responsible for coordinating and managing all aspects of the Department's grant activities from federal, state, and other funding sources to support worthy and qualifying projects. He/she is also responsible for providing technical assistance to agency staff on all grant activities including preparation, application, monitoring, and reporting.

Additionally, the Grants Administration section is responsible for reviewing and responding to all sub-grantee applications and inquiries as well as conducting program audits to ensure activities are carried out in a responsible and consistent manner as per grant guidelines. This position works closely with the Accounting Division for fiscal monitoring and reporting on all grants.



NDCS Administrative Services



INFORMATION SYSTEMS

Bob Shanahan, Information Services Administrator 402-479-5809

Information Systems (IS) is responsible for providing computer support to all NDCS staff, Cornhusker State Industries (CSI), Federal Surplus Property (FSP) and the staff and members of the Nebraska State Board of Parole. The NDCS computing environment is comprised of approximately 1,750 network connected devices, and several hundred non-network connected devices located at 20 sites across Nebraska. The NDCS computing infrastructure supports the use of this equipment and provides connectivity to a variety of resources, including the State's Mainframe computer, Enterprise One, Nebraska's centralized email service, and other information resources. Information Systems also supports remote access and management of various building automation and security systems along with systems used by inmates in the CSI shops, in educational programs and in the inmate Law Libraries.

Information systems supports and maintains the NDCS computing environment and assists NDCS staff in identifying requirements for application software, systems, and changes in functional requirements. Responsibilities of the Information Systems Department include the installation, repair, ordering and replacement of computer systems and peripherals, maintenance and support of the NDCS network, development and support of computer applications and maintenance of a current inventory of computer equipment and software.





Deputy Director of Institutions



Deputy Director of Institutions is responsible for the oversight of the following institutions and areas:

Diagnostic and Evaluation Center

Lincoln Correctional Center

Nebraska Correctional Center for Women

Nebraska Correctional Youth Facility

Nebraska State Penitentiary

Omaha Correctional Center

Tecumseh State Correctional Institution

Emergency Preparedness

Investigations

Drug Interdiction

Interpretation/Translation Services

Religious Services (Dual Supervision)



Deputy Director Hopkins has held a number of positions in the Department of Correctional Services, including Warden of the Nebraska State Penitentiary for nine years.

He has taught classes at Wesleyan University and earned a Masters degree in Criminal Justice in 1980.

Deputy Director Hopkins was appointed Deputy Director - Institutions, effective October 4, 1999.



Diagnostic and Evaluation Center



3220 West Van Dorn Street
Lincoln, NE 68522
402-471-3330
Assistant Warden

Charles Rine

Security Levels

Maximum



Mario Peart, Warden

The Diagnostic and Evaluation Center was opened in August of 1979 as a 160-bed, maximum custody, reception, diagnostic, evaluation, assessment, classification and assignment facility.

The single structure, two-story institution consists of nine inmate housing units and an infirmary, which includes eight licensed hospital beds and a fully staffed initial admissions clinic. Administrative offices and the infirmary are located on the upper level of the institution. All other inmate housing, programming areas, a gymnasium and custody and case management offices are located on the lower level.

As provided by State Statute, all adult males sentenced to the Department of Correctional Services by the County and District courts of the State of Nebraska are received into the correctional system at the Diagnostic and Evaluation Center. In addition, the institution houses ninety-day evaluators sentenced by the court for assessment, county safe-keepers, interstate transfers, returned parolees and escapees.

Programs: Due to the short length of stay at the institution, there are no industry programs and limited programming.

Each newly admitted inmate, following review of the admission order to ensure legal commitment, begins participation in an intensive medical, psychological and social assessment process. This process culminates in the finalization of an individual classification study and specific programming recommendations to the Classification Officer relative to custody status and institutional placement. Varied program services are offered and encouraged through recreation and library programs. The maintenance of family and community ties is encouraged through the visitation, mail and telephone programs. Religious programming is also available to the inmate population. Other opportunities including Alcoholics Anonymous, and a Pre-Release program are available for inmate participation. The Diagnostic and Evaluation Center has been a part of The Nebraska Department of Correctional Services since 1979.

For information about DEC, contact the Public Information Officer, Sarah Nelson @ 479-6343 or sarah.nelson@nebraska.gov.

Design Capacity - 160

Average Population 358

Number of Authorized Staff 137.50

Cost Per Inmate Per Year:

\$33,397

ACA ACCREDITED SINCE 1984





Lincoln Correctional Center



Diane Sabatka-Rine, Warden

3216 West Van Dorn St
Lincoln, NE 68522
402-471-2861
Deputy Warden
Robert Madsen
Associate Warden
Denise Skrobecki
Security Levels
Maximum, Medium

The Lincoln Correctional Center provides care, custody and programming services to a variety of inmates. Each of the six separate housing units are unique. As an extension of the 16-bed Control Unit, one unit has been modified to be a segregation unit. One unit is designated for the Department's In-Patient Mental Health Program. One unit is designated to house inmates who have been classified to protective custody status. One-half of one unit is designated for the Department's In-Patient Sex Offender Program. The remaining housing units house general population inmates who are primarily younger, first-time offenders. All inmates are provided the opportunity to become involved in academic programs. All general population inmates may participate in academic, institutional maintenance and work programs.

Structure, philosophy and dedicated personnel facilitate cooperation between security staff and other departments. The institution provides a unit management program approach that is responsive to the needs of the inmate population while maintaining a secure environment. Inmate supervision is a responsibility shared by staff at all levels in all departments.

For information about LCC contact Public Information Officer Tammy Kluver @ 402-479-6175 or tammy.kluver@nebraska.gov



Design Capacity- 308
Average Population 486
Number of Authorized Staff 234
Cost Per Inmate Per Year:
\$40,129
ACA ACCREDITED SINCE 1984



Nebraska Correctional Center for Women



1107 RECHARGE ROAD
YORK, NE 68467
402-362-3317

Assistant Warden
Tim Siemek
Security Levels
Maximum, Medium, Minimum



John Dahm, Warden

The Nebraska Correctional Center for Women (NCCW) is the only secure correctional facility for adult women in the Nebraska Department of Correctional Services. The facility houses maximum, medium and minimum custody inmates as well as court-ordered evaluators and safe keeper inmates from county jails. The current rated capacity is 275 beds. NCCW has been accredited by the American Correctional Association since 1981.

NCCW began operation in May 1920 through an act of the Nebraska Legislature establishing the "State Reformatory for Women". The original facility included a two story farmhouse that was used as an inmate dormitory and later as the Superintendent's residence. Two additional three-story brick dormitory buildings were added in 1924 and 1926, both of which are still in use today as program areas. In 2004 the facility completed the first half of a \$15 million capital construction project that included the addition of a 76 bed general population living unit, a 15 bed infant nursery unit, a 48 bed residential substance abuse treatment unit, a 15 bed segregation unit, a 30 bed special needs unit, dining room and food preparation area, staff offices, central laundry, warehouse and a new water tower. The second half of the construction project, completed in 2009, included the remodeling of several program areas including medical services, administrative offices and education.

NCCW acts as the diagnostic and evaluation center for all newly committed female inmates. The first 30 days of the inmates' incarceration is in an Orientation program which is segregated from the general prison population. During this program inmates receive medical and mental health evaluations and also learn about the various programming opportunities available to them during their term of incarceration. Each inmate has a personalized classification and programming plan developed to assist her in addressing personal deficiencies. Visiting during the 30 day orientation program is limited to one (1) visit by immediate family members only.

Parenting Program: Started in 1974, the Parenting Program at NCCW was the first of its kind in the United States, allowing overnight visits for children. In 1990 extended day visits for children under the age of 18 were started.

In 1994, NCCW implemented another cutting edge mother/child program, a Nursery modeled after the Bedford Hills Correctional Center in New York. The Nursery Program allows mothers to keep their infant child with them on grounds for up to 18 months, with the goal of having mother and child leave together.

The parenting programs include classes and workshops on parenting skills, prenatal care, child development, child health and safety, and improving relationships. Inmates who participate in the Parenting Programs must meet all NCCW eligibility requirements prior to visits or admittance into the Nursery Program.

Programs: In-Patient Substance Abuse Program, Out-Patient Substance Abuse, Outpatient Mental Health Programs, General Education (has a state accredited ABE program) and Prison Industries employment. College correspondence courses are also available to the inmate at her expense.

For more information about NCCW contact the Public Information Officer, Tim Siemek @ 402-362-3317 ext. 226 or email tim.siemek@nebraska.gov

Design Capacity - 275

Average Population 265

Number of Authorized Staff 124.50

Cost Per Inmate Per Year:

\$39,472

ACA ACCREDITED SINCE 1981





Nebraska Correctional Youth Facility



Ryan Mahr, Warden

2610 North 20th Street, East

Omaha, Nebraska 68110

402-595-2000

Assistant Warden
Trish Brockman

Security Levels

Maximum, Medium, Minimum

The Nebraska Correctional Youth Facility (NCYF) started to become a reality in 1994 with Legislative Bill 988, which created the Office of Juvenile Services and established the requirement to plan for the construction of a secure Youth Confinement Facility. Subsequently, the facility was transferred to the Nebraska Department of Correctional Services. The NCFY received its first inmates in August 1998. NCYF serves as the reception center for youthful male inmates who are 18 years of age and under. NCYF houses inmates from early adolescence to age 21 years and 10 months. The inmates are introduced to NCYF through its Orientation Program. This 30-day program consists of a functional overview of each department prior to initial classification and appropriate placement into general population. Unit Management, Custody, Mental Health, Substance Abuse and Education Programs focus on the team approach at NCYF. NCYF inmates experience a highly structured routine that emphasizes the ability to transition back into society. Volunteers from the community provide invaluable support for continuation and expansion of the various programs at NCYF.

NCYF offers high school credit courses through the NCYF Community High School program as well as GED coursework. Students can earn a high school diploma or a GED certificate. ABE/Basic literacy classes are provided for students to improve scores in reading, math and/or writing. English as a second language (ESL) is available for students learning the English language.

Life Skills classes, Work Skills and Parenting (Inside Out Dads), are offered to all inmates.

Vocational programs such as the ProStart culinary arts program, Project Greenthumb horticulture program and PAWSitive Outcomes dog training program are available to interested and qualified inmates.

In addition to educational opportunities, Mental Health programming is also available through individual psychotherapy sessions, group psychotherapy courses, Anger Management, Aggression Replacement Therapy, Victim Impact, Crisis Intervention and mood management. Additional groups can be added dependent on the needs of the institution.

Non-residential substance abuse treatment is available and provided for those diagnosed with substance abuse or dependence issues. Treatment focuses on motivating change thru drug/alcohol education. The Intensive Outpatient level encourages personal change thru cognitive restructuring. Required individual counseling also takes place. Relapse prevention focuses on identifying triggers and creating plans for release.

The NCYF has been accredited by the American Correctional Association since August 2000. The accreditation offers NCYF the opportunity to evaluate its operations against national standards, remedy deficiencies, and upgrade the quality of correctional programs and services.

For more information on NCYF Contact the Public Information Officer, Jim Sweredoski @ 402-595-2000 or Jim.Sweredoski@nebraska.gov



Design Capacity- 68

Average Population 91

Number of Authorized Staff 74.75

Cost Per Inmate Per Year:

\$67,247

ACA ACCREDITED SINCE 2000.



Nebraska State Penitentiary



4201 South 14th Street
Lincoln, NE 68522
402-471-3161
Deputy Warden

Richard Cruickshank

Associate Warden

Joel Staley

Associate Warden

Cathy Sheair

Security Levels

Maximum, Medium, Minimum



Dennis Bakewell, Warden

The Nebraska State Penitentiary located in Lincoln is the oldest state correctional facility in Nebraska, opening in 1869. Until after World War I, it was the only adult correctional facility in the state.

During 1980-1981, the existing cellblocks constructed during the second half of the 19th century were replaced by four (later five) modular housing units. A new administrative complex and an EPA approved multi-fuel power plant were also completed at the same time. The administration building includes a 10 bed long-term health care unit and clinic, a food service dining facility and a gymnasium. An existing dormitory building constructed in the 1950's was retained as a minimum/medium security facility and currently houses the Residential Treatment Community for substance abuse offenders. Two new 100 bed dormitory units were opened in 1998. Bed space was subsequently increased in each of these units. A thirty-six bed control unit also built in the 1950's continues in use as a high security segregation facility. The Industries Plant, Laundry and other support buildings were retained from the older facility as well.

The inmate population at the NSP typically consists of 21 years of age and older inmates serving medium to longer sentences.

The Nebraska State Penitentiary uses the Unit Management concept designed to improve control and staff/inmate relationships by dividing the larger institution population into smaller, more manageable groups and to improve and personalize the delivery of rehabilitative services.

NSP is the site of major components of the Agency's Cornhusker State Industries (CSI) program.

Programs: NSP offers a variety of education/rehabilitation programs designed to enhance an inmate's chances for successful community adjustment upon release. These include Educational/Life Skills and Vocational Programs, Self-Improvement (Residential and Out-patient Substance Abuse Treatment, a comprehensive Mental Health program, Religious Opportunities and Self-Betterment Activities), and Support Services

The Nebraska State Penitentiary has been accredited by the American Correctional Association since 1985

For more information about NSP Contact ,Public Information Officer, Winfield Barber @ 402-479-3227 or email Win.barber@nebraska.gov

Design capacity 718

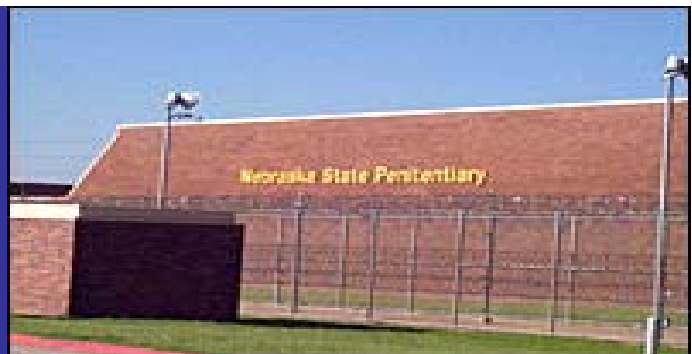
Average Population 1,108

Number of Authorized Staff 452

Cost Per Inmate Per Year:

\$35,182

ACA ACCREDITED SINCE 1985





Omaha Correctional Center



Mike Kenney, Warden

2323 AVENUE J
OMAHA, NEBRASKA 68110
402-595-3964

Deputy Warden
Barb Lewien

Associate Warden
Ken Schmit

Security Levels
Medium, Minimum

The Omaha Correctional Center (OCC) is a medium/minimum security facility located on a 37-acre site in East Omaha, just south of Eppley Airfield. OCC was opened April 24, 1984, at a total cost of approximately \$17 million. The facility has a current population of approximately 650 adult male inmates.

The facility has a separate administration building as well as an inner complex which includes: four housing units, an indoor/outdoor visiting area, library, religious center, dental and medical area, segregation unit, learning center, central physical plant, laundry, kitchen and dining room, canteen, gymnasium and Cornhusker State Industries shops.

PROGRAMS

Programming includes: mental health counseling, academic education, vocational training, English as a Second Language (ESL), substance abuse counseling (including residential and non-residential programs), Alcoholics Anonymous, self betterment clubs, Alternatives to Violence Program (AVP), job skills, re-entry, traditional facility work programs, Cornhusker State Industries including Private Venture, and the Canine Program. Volunteers from the community provide a valuable service in assisting in many of the programs.

For more information about OCC Contact Public Information Officer,
Ron Limbeck @ 402-595-3963 or Ron.Limbeck@nebraska.gov



Design capacity- 396
Average Population 656
Number of Authorized Staff 174
Cost Per Inmate Per Year:
\$26,625

ACA ACCREDITED SINCE 1986



Tecumseh State Correctional Institution



2725 North Highway 50
Tecumseh, NE 68450
402-335-5998

Deputy Warden

Brian Gage

Associate Warden

Michele Hillman



Fred Britten, Warden

Security Levels

Death Row, Intensive Management

Maximum, Medium

The Tecumseh State Correctional Institution (TSCI) was established by LB 150 in 1997 and is the only Nebraska Maximum/Medium Custody, adult male facility in a rural setting.

All inmates at the Tecumseh State Correctional Institution are males adjudicated as adults and classified as medium or maximum custody. The institution has an operational capacity of 978 inmates, which includes 784 general population beds and a 194-bed special management unit for Administrative Segregation, Disciplinary Segregation and Intensive Management inmates. TSCI is the only male facility that houses Intensive Management inmates. Death Row inmates are housed at TSCI; the death penalty is administered at the Nebraska State Penitentiary in Lincoln.

TSCI received its first inmates in December 2001.

For more information about TSCI Contact the Public Information Officer Daniel Hayes @ 402-335-5113 or daniel.hayes@nebraska.gov

Design capacity 960

Operational Capacity 978

Average Population 925

Number of Authorized Staff 437

Cost Per Inmate Per Year:

\$37,660

ACA Accredited Since 2003





Programs and Services Under Supervision of Deputy Director of Institutions



RELIGIOUS SERVICES

Joe Baldassano 402-479-5730

The Department provides opportunities for inmates to practice the religion of their choice within the parameters related to the safety, security, and good order of the institution. Maintaining impartiality, consistency and equality for time, space, and resources among all religions is a prime consideration. Each institution assigns a person to coordinate religious activities. Guidance for the implementation of the agency religious program is obtained through the Religion Study Committee (RSC). The assistant to the Deputy Director for institutions is the coordinator for the agency's religious program at the Central Office level, and co-chairs the Religion Study Committee. The Religion Study Committee membership is comprised of the facility religious coordinators and a legal Representative.

INTERPRETATION/TRANSLATION SERVICES

Robert Madsen 402-471-2861

In 1998, LB 389 appropriated funding to the Department of Correctional Services for four full-time interpreters. Four Spanish and English speaking interpreters were hired to help facilitate oral and written interpretation and translation services to inmates, inmate families and the community regarding matters relative to the Department of Correctional Services. These staff members are assigned by geographic area and travel to each DCS institution/program as needed. The Department's interpreters also make arrangements with community resources, for interpretation and translation services for languages other than Spanish and English.

Since that time (1998) the Interpretation/Translation Division has grown in both scope and complexity requiring a comprehensive, global approach in providing services to the inmate population. Several innovations have been incorporated within the Division that has made interpretation and translation services more accessible to both staff and the inmate client.

Among these innovations was the development of a database of translated documents that staff may access on the Q: drive of their computers, which includes many of the documents that staff make use of in their day to day activities within the institutions. The database has both a public area accessible to all and an interpreter's area that limits access to selected individuals within the Division.

Another document based project that is an ongoing process for the Interpretation staff is the translation and updating of the Administrative Regulations that are available to the inmates in the Inmate Libraries and Resource Centers. The ARs have been translated into Spanish for 2007, 2008, and the 2009-2010 updates are currently in progress. Up to this point we have made these documents available in Spanish-only due to the overwhelming majority of LEP (Limited English Proficient) inmates that speak that language. This project will remain an ongoing one from year to year and the Spanish language documents will be updated to reflect the updates and changes made to the same documents in English each cycle.

The translation of the NDCS Inmate Rules and Regulations Handbook was completed in three languages, after the latest edition in English was made available. This was the first English language update to the Handbook in eight years, since the year 2000. The Interpretation/Translation Division worked diligently to rapidly complete the translation of this important document, not only in Spanish, but in Arabic and Vietnamese as well.

The latest language project (2010) that has been completed by the Division has been the recording of the NDCS Inmate Rules and Regulations Handbook in English, Spanish, and Vietnamese. The rationale for having these recordings at the disposal of staff at our various facilities is to provide a way for them to convey these rules and regulations to inmates who may be illiterate in their native language and therefore unable to read a written format document. This project was directed by the Interpreter Supervisor and required the services of three readers, two of which were volunteers from within the NDCS, thereby providing significant savings to the Department. The third reader was contracted from the community for the language of Vietnamese.

It is evident that the Interpretation/Translation Division plays an integral role in the daily operation of the individual facilities and the NDCS as a whole. Since the inauguration of the Interpretation and Translation Division twelve years ago in 1998, the division has developed from a newly formed, relatively unknown area, to an indispensable, completely integrated division that many areas (Medical, Mental Health, Parole Board, Case Management, Drugs and Alcohol, etc.) depend on for interpretive and translation assistance. The Interpretation/Translation Division will continue to provide language support to all areas of the NDCS, focusing on professionalism, quality, and staff development.



Programs and Services Under Supervision of Deputy Director of Institutions



EMERGENCY PREPAREDNESS

Brad Hansen 402-479-5617

Emergency Preparedness is a comprehensive system that requires a continuous commitment to personnel and resources to ensure a systematic approach to responding to emergencies. Key to the success of the Emergency Preparedness Program are the full time staff at the Department level as well as the facility level that ensure the Department's readiness to respond through emergency policy, planning, training, check lists and exercises. Essential to the success of a response to a facility emergency are the specially trained teams. The teams consist of two Department wide teams—Special Operations Response Team (SORT) and the Crisis Negotiation Team (CNT) and the institutional based Correctional Emergency Response Team (CERT).

INVESTIGATIONS

Brad Hansen 402-479-5617

The Department Investigation program is committed to the investigation and prosecution of all criminal activity by either staff or inmates. The Department has two full time investigators that are law enforcement certified and have the power to arrest and detain. The Department Investigators work closely with the facility staff in developing information and they also work closely with outside agencies, i.e., the Nebraska State Patrol, local law enforcement and County Attorneys.

DRUG INTERDICTION

Brad Hansen 402-479-5617

The Department has a zero tolerance policy on the use of drugs by inmates and staff. The Drug Interdiction program works toward that goal by employing a multi-faceted approach. The program consists of information gathering and sharing, telephone monitoring, random and targeted urinalysis testing on staff and inmates, K-9 searches and the Drug Offender Classification Program. Note that the Planning and Research division keeps information and data regarding the Department's drug interdiction efforts. Additionally, that section coordinates with lab personnel and generates the lists of inmates to be tested. Please refer to the section in the Annual Report under Drug Testing/Drug Intelligence for further information.

LEISURE TIME ACTIVITIES

Frank X. Hopkins 402-479-5733

Leisure time activities provide an avenue for self-development by inmates as well as helping create a humane environment. It allows inmates to pursue individual hobbies and develop individual talents. Each institution has qualified staff to supervise recreation activities. These include exercise, athletics, games, music, painting, writing, and handcrafts.

NDCS SECURITY MANUAL

Helen M. Torres 402-479-5607
Joe Baldassano 402-479-5730

The Department's Security Manual contains procedures for institution security and control, with detailed instructions for implementing these procedures. The Department Security Administrators as well as the Department Emergency Management Supervisor, the Planning, Research and Accreditation Administrator, the Deputy Directors and the Director review all Security Manual Chapters and Audit Instruments annually. The office of the Deputy Director – Institutions is responsible for updating and maintaining the Security Manual. Additionally, the office of the Deputy Director – Institutions works with the Security Administrators in reviewing the Department's policy directives in order to determine whether immediate revisions to the Security Manual are required. Security Audit Teams conduct security audits of each facility on an annual basis. Along with security audits, security procedure assessments and/or system checks will be completed at each NDCS facility at a minimum of three times per year. The office of the Deputy Director – Institutions is responsible for reviewing security audit, procedure assessment and system check reports and following up as necessary. Additionally, this office maintains records of security audits, procedure assessments, and system checks conducted by the Department.



Deputy Director of Programs and Community Services



The Deputy Director of Programs and Community Services is responsible for the oversight of the following institutions and areas.

Community Corrections Center-Lincoln

Community Corrections Center-Omaha

Work Ethic Camp

Adult Parole Administration

Central Records

Classification

Corrections Compact

Education

Library-Recreation & Law

Religious Services (Dual Supervision)

Volunteers

Inmate Transportation & Extradition



Deputy Director Wayne has worked for the Nebraska Department of Correctional Services for 33 years.

He has worked in various capacities within the Department and served as Warden ten years at the Nebraska Correctional Center for Women and three years at the Diagnostic and Evaluation Center.

He was appointed Deputy Director of Programs and Community Services in September of 2003.



Community Corrections Center-Lincoln



Rex Richard, Warden

2720 West Van Dorn

Lincoln, NE 68522

402-471-0740

Assistant Warden

Matt Heckman

SECURITY LEVELS

COMMUNITY A AND COMMUNITY B

The Department's community correction facilities in Lincoln and Omaha are designed to provide the initial step that many offenders take in returning to Nebraska's communities. This is accomplished through a graduated release and a systematic decrease in supervision and corresponding increase in responsibility. Inmates nearing release on parole or discharge from sentence are eligible through a classification system to be promoted to community custody status. Inmates on Community A are assigned to a detail within the facility, assignments within other state agencies, or work assignment in the community. Community A inmates are furnished clothes, room and board and a daily wage. Community B inmates participate in the work and education release program. Inmates on work release are employed in the community, receive competitive wages and pay applicable taxes. Inmates on educational release attend local vocational, technical, business colleges and universities. Community B inmates are responsible for their own clothing and personal items and pay room and board costs of \$12.00 per day.

Programs: Work detail, work release, educational release, furloughs, ABE/GED, and substance abuse programming; community activities passes (e.g. recreation, shopping, religious) and other programming (family counseling, mental health, AA/NA) may be arranged through community support programs and agencies.

The Work Release Program has been a part of Nebraska Correctional Services since 1967.

For more information about CCC-L, contact Public Information Officer, Pam Prater @ 402-471-0740 or pam.prater@nebraska.gov



Design Capacity - 200

Average Population 372

Number of Authorized Staff 48

Cost Per Inmate Per Year:

\$17,876

ACA ACCREDITED SINCE 1981



Community Corrections Center-Omaha



Charles West, Warden

2320 Avenue J
Omaha, NE 68110
402-595-2010

Assistant Warden
Edward Fabian

Security Levels
Community A and Community B

The Community Corrections Center-Omaha is a community based correctional facility that houses male and female inmates who are near the completion of their sentence or pending a parole hearing. Inmates are classified at Community A or B custody levels. Community A custody inmates are assigned to work crews where they work under the close supervision of a DCS staff member or state employee. Work Detail crews provide services that support the facility operation, other NDCS facilities or state agencies. Some of these services include food preparation, gardening, recycling, landscaping, housekeeping and building maintenance. The work detail program develops work ethics and skills that prepare inmates for their transition to work release and the community.

Work Release (Community B custody) inmates are employed in the community and earn a competitive wage. All applicable taxes on wages are paid. In addition to paying \$12 per day in room and board, 5% of net wages are collected for the State Victims Compensation Fund, Reentry Cash Fund and Release Savings.

Educational Release inmates attend local vocation/technical schools, community colleges and universities. They may elect to perform regular work duties or accept part-time employment to pay for their room and board.

Programs: Work detail, work release, educational release, furloughs, ABE/GED, and substance abuse programming; individual activities passes (e.g. recreation, shopping, religious) and other programming (i.e. family counseling, mental health, AA/NA) may be arranged through community support programs and agencies. CCC-O (originally OCC-Work Release Unit) has been a part of the Department of Correctional Services since 1971. The current facility was constructed in July of 1985.

For more information about the Community Corrections Center-Omaha, contact Public Information Officer, Ed Fabian @ 402-595-2010 or email at edward.fabian@nebraska.gov

Design Capacity- 90

Average Population 156

Number of Authorized Staff 29

Cost Per Inmate Per Year:

\$21,491

ACA ACCREDITED SINCE 1981





Work Ethic Camp-McCook



Pam Morello, Warden

2309 N. Hwy 83
McCook, NE 69001
308-345-8405

The program offered at the Work Ethic Camp is designed for first-time, non-violent male and female probation offenders and inmates preparing for re-entry into the community.

Security Level

Intensive Supervision Probation Offenders
Minimum B Inmates

The philosophy of the Work Ethic Camp is that the behavior and attitudes reflecting positive work ethics can be learned and transferred to all areas of an individual's life.

The mission of the Work Ethic Camp is to provide an integrated program in partnership with the Probation and Parole Administrations that combines evidence-based practices within a highly structured treatment environment.

The Work Ethic Camp offers a 180-day, five phase program. Probation offenders must have been convicted as an adult of a felony offense to be eligible for the WEC program. Inmates must be in a parole pending status or assigned to the Work Ethic Camp through the classification process. Completion of the program can be achieved as early as 150 days if earned through positive program progress and behavior.

Probation offenders and inmates perform community service work on and off-site for local and area government and non-profit entities. Their performance and behavior is evaluated once each phase as a minimum.

Each offender/inmate will receive an individualized program and case plan. Programs include: GED/ABE, short-term residential substance abuse treatment, cognitive restructuring, life skills, work attitudes and behaviors, budgeting, offense cycle, victim impact, parenting and vocational programming. Specialized programs that may be earned through positive program progress and behavior include the Rewards and Trust Programs. Approved visitors may visit one time each week and phone calls are allowed through the Inmate Calling System at fifteen minutes per day. All clothing is provided for offenders/inmates. Hygiene products and canteen products can be purchased once a week. Upon completion of the program, probation offenders will be released on intensive supervision probation. Inmates in a parole pending status will be released on parole supervision. Those inmates assigned to WEC through classification, will be transferred to a community center upon completion of the program.

For more information about the Work Ethic Camp, contact the Public Information Officer
Maria Bieker (308) 345-8405, maria.bieker@nebraska.gov



Design Capacity - 100
Average Population 126
Number of Authorized Staff 75.50
Cost Per Inmate Per Year
\$18,471
(based on # of inmates/
probationers and an average 5 month stay)

ACA ACCREDITED 2004

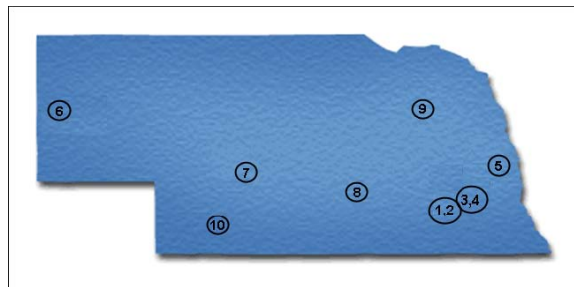


NDCS Programs and Community Services



Adult Parole Administration
P.O. Box 94661 Folsom and W. Prospector Place
Lincoln, Nebraska 68509-4661
Cathy Gibson-Beltz, Parole Administrator
Anne Hansen, Assistant Parole Administrator

The Office of Adult Parole Administration was established by an act of legislation in 1969 as a program under the Department of Correctional Services. Adult Parole Administration provides supervision, guidance and assistance to offenders paroled by the Board of Parole as they re-enter the community after a period of incarceration. In 2006 Adult Parole Administration began providing lifetime supervision of certain sex offenders released to the community. There are adult parole offices located in Omaha, Lincoln, Norfolk, Grand Island, North Platte, McCook and Scottsbluff to provide supervision and surveillance of parolees and sex offenders across the state. Adult parole officers work closely with local law enforcement, probation officers, community service providers and members of the community to enable paroled offenders and high risk sex offenders to become law-abiding, productive members of society.



1. Adult Parole Central Office-Lincoln:

Folsom and W. Prospector Place
 Building #1
 (on The Lincoln Regional Center Campus)
 P.O. Box 94661
 Lincoln, NE 68509-4661
 (402) 479-5771
 FAX: (402) 479-5804

2. Nebraska Interstate Compact Office (Parole):

Folsom and W. Prospector Place
 Building #1
 (on the Lincoln Regional Center Campus)
 P.O. Box 94661
 Lincoln, NE 68509-4661
 (402) 479-5768
 FAX: (402) 479-5804

3. Lincoln District Parole Office:

3800 Vermaas Place, Suite 100
 Lincoln, NE 68502
 (402) 471-1280
 FAX: (402) 471-1283

4. Lifetime Sex Offender Unit:

3800 Vermaas Place, Suite 100
 Lincoln, NE 68502
 (402) 471-1284
 FAX: (402) 471-1283

5. Omaha District Parole Office:

1313 Farnam Street
 Omaha, NE 68102-1869
 (402) 595-2050
 FAX: (402) 595-3874

6. Scottsbluff Regional Parole Office:

Panhandle Office Complex
 P.O. Box 1500, 4500 Ave. I
 Scottsbluff, NE 69363-1500
 (308) 632-1283
 FAX: (308) 632-1313

7. North Platte Regional Parole Office:

State Office Building
 200 South Silber Avenue
 North Platte, NE 69101
 (308) 535-8115
 FAX: (308) 535-8175

8. Grand Island Regional Parole Office:

TierOne Bank Building
 1811 West 2nd Street, Suite 225
 Grand Island, NE 68803
 (308) 385-6230 or (308) 385-6215
 FAX: (308) 385-6017

9. Norfolk Regional Parole Office:

Norfolk Regional Center
 P.O. Box 1209
 1700 North Victory Rd.
 Norfolk, NE 68702-1209
 (402) 370-3136 or (402) 370-3539
 FAX: (402) 370-4332

10. McCook Regional Parole Office:

Work Ethic Camp
 P.O. Box 1150
 2309 North Highway 83
 McCook, NE 69001
 (308) 345-8457
 FAX: (308) 345-8405



NDCS Programs and Community Services



Classification and Records Administrator
Kyle Poppert 402-479-5750

Upon admission to the Nebraska Department of Corrections, the Records Office of the receiving facility (Diagnostic & Evaluation Center for men, the Nebraska Correctional Center for Women or the Nebraska Correctional Youth Facility for male youth adjudicated as adults) creates an "institution" inmate file. This file is maintained on active status throughout the entire period of incarceration. Upon discharge, the file is transferred to the Central Records Office for permanent storage and microfilming in compliance with the Department's Records Retention Schedule.

Per Nebraska Revised Statute 83-178, the contents of the inmate file are confidential. However, limited information is a matter of public record and may be released to the public upon request. Public Information concerning inmates is also available through the Department's Web Site:<http://www.corrections.nebraska.gov/>

Along with the "institution" inmate file, a Central Records Office Inmate file is also created in accordance with Nebraska Revised Statute 83-1,100. This file is similar to the "institution" file and is also confidential in accordance with the Statutes cited herein. The Board of Parole and its staff use this file to assist in carrying out the duties of that agency. The Central Office Departmental staff also uses this file to assist them in the routine decision making functions of those positions.

Along with the "hard copy" inmate file, automated inmate records are maintained on several computer applications. The data maintained on these computerized systems also fall under the guidelines of the confidentiality statutes cited above.

INMATE CLASSIFICATION

Inmate classification throughout the Department is a validated system for identifying inmates' risk, needs, characteristics and matching them with the appropriate physical security, supervision and programming. This is an ongoing, systematic process, utilizing all available information and endeavoring to base decisions on evidence based criteria. The classification system seeks to: assign each inmate to the least restrictive environment appropriate to maintaining public safety and confidence; facilitate the timely movement of inmates through the correctional system; provide for the assignment, continuation and removal of inmates from Administrative Segregation status; identify inmate's risk and needs making program recommendations to address those factors; prioritize access to resources such as programming; and assure the most difficult classification decisions are made at the highest level of authority within the Department.

PROGRAMS ADMINISTRATOR Layne Gissler 402-479-5723

INTERSTATE CORRECTIONS COMPACT

Under the provisions of the Interstate Corrections Compact, the Nebraska Department of Correctional Services has entered into agreements with forty (40) other states.

This provides Nebraska inmates the opportunity to request to serve their Nebraska sentence in one of those states. Reciprocal inmates from other states may then be accepted in return.

Interstate transfers may be approved for a number of reasons, but are generally arranged to enable an inmate to be closer to family and maintain family ties. As of June 30, 2010, there were 22 Nebraska inmates serving their sentences in other states, and 20 inmates from other states serving their sentences in Nebraska.



NDCS Programs and Community Services



PROGRAMS ADMINISTRATOR
Layne Gissler 402-479-5723

EDUCATION

The Department implemented a self operating special purpose school district effective January, 2008. This has been a successful transition. All educational programming is provided by NDCS. Instruction is made available to inmates at a time when the majority can take advantage of the programs and, whenever possible, are designed to allow inmates to enter at any time and to proceed at a self-paced rate.

Education services are typically delivered through a Learning Center which is staffed by teachers who are certified by the Nebraska Department of Education. Educational staff work together as a team to provide an integrated program of educational offerings and services designed to provide individual inmates those specific educational opportunities most used and relevant to their futures. These options include assessment, literacy instruction, English as a Second Language (ESL), Adult Basic/General Education Development (ABE/GED) and life skills/pre-release courses. Offerings are delivered in a variety of formats including traditional classroom lecture/discussion, individualized computer-assisted learning, individualized tutoring. The Test of Adult Basic Education (TABE) is used to test achievement levels of inmates upon entry into the ABE/GED program, enabling staff to provide appropriate placement, and periodically on an individual basis to assess progress. The BEST test is used to assess ESL students

SELF-BETTERMENT GROUPS

Opportunities for self-betterment are available to inmates, but vary depending upon the institution. Clubs, support groups, and cultural awareness organizations include: Sertoma, Toastmasters, Stamp Club, Veterans, Alcoholics Anonymous, Narcotics Anonymous, 7th Step (a release preparation group), Harambee (African Americans), Mexican Awareness Through Association (MATA), and Native American Spiritual and Cultural Association (NASCA).

VOLUNTEER SERVICES

Volunteers assist in providing a variety of services to inmates through clubs, education, religious activities, and self-betterment groups. Additionally, a large number of inmates' family members and friends offer their time sponsoring inmates on furloughs and passes into the community.

LIBRARY SERVICES

The Nebraska Department of Correctional Services maintains eight correctional libraries. Library services are available to all inmates and assist in meeting their educational, recreational and therapeutic needs. Inmates may request books and other resources from the interlibrary loan program. Additionally, computer reference centers are available as well as online or CD-Rom based legal resources.

To ensure compliance, law library services provide inmate access to the courts. Services are available on a daily basis, including evenings and weekends.



NDCS Programs and Community Services



Reentry Program

Utilizing a comprehensive form of case management, NDCS focuses on issues including substance abuse, mental health, housing, employment, education, mentoring, transportation, criminal thinking, and parenting/family reunification needs. We partner with community-based service providers including the Health and Human Services System, the Department of Labor, along with faith-based prison ministries and other social service entities. NDCS partnered with Christian Heritage and secured a grant from the National Fatherhood Initiative to facilitate the successful family reunification program, InsideOut Dads, within our facilities. Additionally, through collaboration with Heartland Reentry Aftercare, inmates who are transitioning back into the community are partnered with a support group to help them be successful in the community. Successful reintegration of offenders back into society is our objective. NDCS believes forging these partnerships with the community best serves the interest of all Nebraskans.

INMATE RISK & NEEDS ASSESSMENTS

Currently the Nebraska Department of Correctional Services utilizes four Risk & Needs Assessment instruments.

**Institutional
Community**

identifies appropriate inmates for the Reentry Program, provides information to the Parole Board for consideration prior to being places on parole.

Community re-assessments

provides information to Adult Parole Administration while an inmates is participating on parole.

Aggression / Vulnerable

identifies inmates who may be a risk to other inmates or staff and those inmates who may be at risk from other inmates.

These assessment instruments are valuable in aiding staff in appropriate identification for program and parole participation, institutional security risk and discharge planning.

Inmate Transportation & Extradition Terry Ewing, Administrator 402-479-5705

The Special Services Unit was established in 1983. At that time primary duties were to return Parole Absconders and Escapes to the institution. Over the years the duties have expanded to include Detainers, Warrants of Arrest, Prisoner Transportation, Inmate Calling System, Teletype Services, Coordination of Court Transport Orders Acquisition of Radio Equipment and Radio Communication Licensing. In addition to the Department of Correctional Services duties, the Special Services Unit provides administrative support to the Governor's Office in reviewing and processing Governor's Warrants in the requisition of wanted fugitives.

TRANSPORTATION

The Transportation Unit employs three Warrant and Extradition Officers who work closely with local, state and federal agencies. Their duties include the return of Escapees, Parole Absconders and Parole Violators, Interstate Transfers of Inmates, Institutional Transfers, Transporting Parolees for Revocation Hearings, Detainer Service, Waivers of Extradition, and notification of inmate release dates to agencies who have lodged detainers.

DETAINERS/WARRANTS/TRIAL REQUESTS

The Special Services Unit administrator serves as the central administrator acting under the supervision of the department director in implementing the Interstate Agreement on Detainers (IAD). The IAD is a compact comprising of 48 states, the District of Columbia and the United States government. It provides for the administrative transfer of prisoners who are wanted by other states for disposition of untried criminal charges. Within the State of Nebraska, disposition of untried charges pending in county and local jurisdictions is handled according to procedures similar to those contained in the IAD. The purpose of the IAD and the intrastate Disposition of Untried Charges is to provide a process by which prisoners and prosecutors may initiate steps to resolve outstanding criminal charges. Provisions for speedy disposition help to alleviate uncertainties that slow programming and rehabilitative opportunities for prisoners within the correctional system.



Educational Programming

The Nebraska Department of Correctional Services offers educational programming at each correctional site based on the specific needs of the population and availability of space at that site.

NDCS strives for a teacher/student ratio of one teacher for every fifteen students. Most sites offer Job Skills, Parenting, Life Skills, Adult Basic and Secondary Education (ABE/ASE), English as a Second Language (ESL), and correspondence study. In all facilities the GED test is used as a vehicle for adult students to earn a Nebraska High School Diploma. A full high school program is available at NCYF and at other facilities for inmates under the age of 21 who can realistically earn a NCYF Community High School diploma.

OMAHA CORRECTIONAL CENTER – (OCC)

ESL, ABE/ASE, Parenting*, Pre-Release, Intro. to Computers, Job Skills, college correspondence courses, and Pro-Start Food Service Training.

COMMUNITY CORRECTIONAL CENTER – OMAHA – (CCC-O)

ABE/ASE

Staffing for OCC & CCC-O consists of one full-time lead teacher, three full-time endorsed teachers and one Food Service certified vocational teacher.

NEBRASKA CORRECTIONAL YOUTH FACILITY - (NCYF)

High School programming, ESL, ABE/ASE, Parenting*, college correspondence courses, Job Skills, Pro-Start Food Service training, and Horticulture.

Staffing for NCYF consists of one full-time principal, four full-time endorsed teachers, .5 school liaison, and two certified Food Service vocational teachers. Horticulture is taught by a master gardener and several volunteer staff members.

All high school students at this correctional site are required to attend school six hours per day Monday through Thursday. ABE and ASE students attend two to six hours of classes Monday through Thursday based upon the number of tests they need to complete. All testing is done on Fridays. Special population groups meet on Fridays. Speakers from the community at large present monthly convocations on a variety of topics.

TECUMSEH STATE CORRECTIONAL INSTITUTION - (TSCI)

ESL, ABE/ASE, Parenting*, Intro to Computers, Job Skills, Pro-Start Food Service training, and college correspondence courses.

Staffing for TSCI consists of one full-time lead teacher, four full-time endorsed teachers, and one certified Food Service vocational teacher.

LINCOLN CORRECTIONAL CENTER - LINCOLN (LCC)

ESL, ABE/ASE, Parenting*, Intro to Computers, Job Skills, college correspondence courses, and Pro-Start Food Service training.

COMMUNITY CORRECTIONAL CENTER - LINCOLN (CCC-L)

ABE/ASE and ESL

Staffing for LCC and CCC-L consists of two full-time endorsed teachers, one lead teacher, and one certified Food Service vocational teacher.

Vocational programs including C-Tech Cabling and Housing Construction are offered at CCC-L. Both are taught by staff members who have trade experience.



NEBRASKA STATE PENITENTIARY - (NSP)

ESL, ABE/ASE, Parenting*, Intro to Computers, Job Skills, college correspondence courses, and Pro-Start Food Service training.

Staffing for NSP consist of one full-time lead teacher, three full-time endorsed teachers, and one certified Food Service vocational teacher.

NEBRASKA CORRECTIONAL CENTER FOR WOMEN - (NCCW)

ESL, ABE/ASE, Parenting*, Keyboarding, Job Skills and college correspondence courses.

Staffing for NCCW consists of 1 lead teacher and 2.75 full-time endorsed teachers.

WORK ETHIC CAMP – McCOOK - (WEC)

ESL, ABE/ASE, Parenting*, Job Skills,** Budgeting,** THINK Program,** and My Skills.**

Staffing for WEC consists of one full-time lead teacher and one full-time endorsed teacher.

Unit caseworkers teach courses marked with **.

Welding and Business Technology vocational programs are offered through a collaborative effort of the Mid Plains Community College – McCook Campus, business and industry, and NDCS.

This program is in the development stages.

Educational Programming Legend:

ESL-English as Second Language

ABE/GED-Adult basic Education

CCC-L-Community Corrections Center-Lincoln

CCC-O-Community Corrections Center-Omaha

NSP-Nebraska State Penitentiary

LCC-Lincoln Correctional Center

WEC-Work Ethic Camp

OCC-Omaha Correctional Center

NCYF-Nebraska Correctional Youth Facility

NCCW-Nebraska Correctional Center for Women

TSCI-Tecumseh State Correctional Institution

* Parenting classes may be accomplished through the assistance of trained volunteers.



The Deputy Director of Health Services is responsible for the oversight of the following areas.

Medical and Dental Services

Mental Health

Substance Abuse



Deputy Director Randy Kohl joined the Nebraska Dept. of Correctional Services in Oct. 2001

Deputy Director Kohl received his MD from UNMC and is residency trained in Family Medicine.



A. DESCRIPTION OF ACTIVITIES

Health Services are provided at the Nebraska Department of Correctional Services (NDCS) adult facilities for all inmates under the jurisdiction of NDCS. The mission of Health Services is to ensure that all inmates receive services designed to maintain good health. This is accomplished by providing a wide range of health services including mental health and substance abuse services. Due to the nature of the health care delivery system, medical staff provides inpatient and out-patient services through an integrated medical, mental health, psychiatry and substance abuse team approach.

The NDCS has three hospitals located at the following institutions: Nebraska State Penitentiary – twelve (12) beds; Diagnostic and Evaluation Center – eight (8) beds and the Tecumseh State Correctional Institution (TSCI) – ten (10) beds. In addition, the NDCS has medical clinics located at the following institutions: Nebraska State Penitentiary (NSP), Diagnostic & Evaluation Center (DEC), Tecumseh State Correctional Institution (TSCI), Lincoln Correctional Center (LCC), Omaha Correctional Center (OCC), Community Correction Center-Omaha (CCC-O), Community Corrections Center-Lincoln (CCC-L), Nebraska Correctional Center for Women (NCCW), Nebraska Correctional Youth Facility (NCYF) and Work Ethic Camp (WEC). All hospitals are licensed by the Department of Health and Human Services and fully comply with all requirements imposed by that department.

Mission

The Health Services Department of the Nebraska Department of Correctional Services provides humane, comprehensive, and integrated health care; including program opportunities consistent with the standards of quality and scope of services found in the community to promote the health and well being of those individuals placed in our custody.

Vision

The Health Services Department strives to continually improve the health of the individual placed in our custody by developing integrated delivery systems that efficiently provide a continuum of needed, accessible and quality health services.

Values

Excellence:

The Health Services Department believes in fostering excellence through

- continuous quality improvement
- cost efficiency, effectiveness, and appropriate utilization of resources
- Flexibility
- open communication
- recruiting and retaining high quality staff
- cooperative partnerships and teamwork
- ownership and commitment
- diversity

Service:

The Health Services Department believes in delivering services:

- responsively
- with care and compassion
- in a seamless continuum
- in an efficient and effective manner
- in partnership with community resources
- through holistic and preventative philosophies which promote rehabilitation and re-entry into society
- Which encourage inmates to share responsibility in their health care and well-being



Personal and Professional Growth:

The Health Services Department believes that personal and professional growth entails:

- > Building and expanding knowledge, skills, and abilities through educational and training opportunities
- > Developing leadership potential
- > Fostering accountability

Credibility:

The Health Services Department believes that credibility requires:

- > Reliable, consistent service
- > The community standard of care
- > Quality services
- > Professionalism
- > Integrity

B. GOALS AND OBJECTIVES

- To oversee health services of all inmates
- To operate in an efficient and effective manner in an integrated health care delivery system
- To achieve and maintain accreditation and licensure for all of our facilities and institutions
- To promote quality assessment and improvement
- To promote communication and dialogue among staff, inmates and those community resources involved in the care of our patients
- To recruit, train and retain qualified staff
- To provide a secure and safe environment

C. PERFORMANCE AND EVALUATION MEASURES

- Accreditation/ACA audits every three years
- Annual internal ACA audits
- Department of Health and Human Services hospital licensure
- Clinical Laboratory Improvement Amendments (CLIA)
- Department of Health inspections
- Quarterly health authority meetings
- Monthly and annual statistical and financial reports
- Ongoing care evaluation

SERVICES PROVIDED

- All routine health care, including preventative care
- Mental health treatment
- Substance abuse treatment
- Inpatient primary and secondary care
- Chronic care clinics
- Specialty clinics
- Diagnostic radiology
- Laboratory
- Optometry, including dispensing of eye ware
- Physical and speech therapy
- Audiology
- Patient education
- Medical records
- Dental
- Dietary
- Pharmacy
- Medical supply
- Home Hemodialysis
- Chemotherapy
- Hospice Care



NDCS INSTITUTIONAL PROGRAMS AND SERVICES BEHAVIORAL HEALTH PROGRAMMING/SERVICES

Behavioral Health

NDCS Behavioral Health emphasizes treatment services for high risk, high need populations. The primary focus of Behavioral Health is to provide services to inmates with major mental illness. Other priority populations include violent offenders, sex offenders, and offenders with substance use disorders. Clinical review teams make specific recommendations for treatment interventions for these core groups. Social work staff provide discharge planning services to the core populations.

Mental Health Services:

Mental Health offers a wide range of services and programs to address the mental health needs of high risk offenders with an emphasis on those with major mental illness. The services include assessment and evaluation, residential and outpatient treatment programs, and crisis intervention.

Residential Programs:

The Mental Health Unit (MHU) provides residential treatment services to inmates with major mental illness or severe social/developmental impairment. Program goals include learning about and coping with major mental illness or social deficits and improving coping skills with the goal of transitioning to general population and ultimately the community. The length of this program varies depending on needs and progress in treatment. The Mental Health Co-Occurring Program (COP) is a residential substance abuse treatment component developed over the past year and is offered within the MHU.

The Inpatient Healthy Lives Program (IHeLP) provides treatment to inmates who are at the highest risk for sexual re-offense. The program uses materials and assignments in a group therapy setting. This is an intensive 24 month program, though individual treatment time varies based on the needs and progress in treatment.

Outpatient Treatment Services:

Anger-Violence Programming – Programming is offered to high risk inmates with a history of violence. Programming includes anger management which provides instruction and practice on basic anger control strategies. The Violence Reduction Program (VRP) is an empirically validated approach to intervening with higher risk instrumentally violent offenders. This program also has some residential components as all the offenders involved in the program live on one unit.

Outpatient Healthy Lives Program (oHeLP) – Treatment is offered to those inmates who are assessed to be at a moderate to moderate-high risk to sexually reoffend. Participants in oHeLP work through materials and assignments in group therapy. oHeLP takes about one year to complete.

Bibliotherapy Healthy Lives Program (bHeLP) – Treatment is offered to those inmates assessed to be at low risk to sexually reoffend, relative to other sex offenders. Participants in bHeLP work at their own pace on materials provided by the therapist. bHeLP takes several months to complete.

Continuing Care – Continuing Care is for those individuals who have successfully progressed through their recommended sex offender treatment program. People in the Continuing Care program work in a group setting with peers and therapists to address treatment needs as they arise.

Psychological Services- Psychological evaluations are completed based on Unit Staff or Parole Board referral.

PREA-Related Services-Mental Health Staff assist with the provision of assessment and treatment services for offenders identified as a high risk for predatory behaviors and offenders who are at risk for victimization.

Other Services- Crisis management services are also available as needed.



Substance Abuse Services:

Substance abuse offers a wide range of treatment services to address the needs of offenders who have substance abuse or substance dependence issues. Services include residential and non-residential treatment and assessment of substance-related problems. Substance abuse recently expanded its long-term residential treatment beds from 236 to approximately 440.

Residential Programs:

NDCS maintains over 564 residential treatment beds at 5 separate facilities at this time. Inmates assigned to these programs have been identified as having serious substance abuse issues. The residential program generally lasts about 10 months. Short-term residential treatment is also offered at one facility.

Non-residential Programs:

This service is available for offenders who are not eligible for the residential program who have lower level substance abuse issues and is available at 3 facilities. The program lasts up to 6 months.

Psychiatric Services:

Psychiatry services are offered to provide pharmacological treatment to inmates with mental illness. All of the institutions are served by staff psychiatrists, mid-level psychiatric providers, or consulting psychiatrists who prescribe and manage psychiatric medications.

Behavioral Health Programming Offered by Institution

Community Corrections Center-Lincoln (CCC-L):

- *Follow-up psychiatric services
- *Crisis intervention
- *bHeLP sex offender treatment
- *Access to community mental health services
- *Access to community substance abuse services

Community Corrections Center-Omaha (CCC-O):

- *Follow-up psychiatric services
- *Crisis intervention
- *bHeLP sex offender treatment
- *Access to community mental health services
- *Access to community substance abuse services
- *Continuing care sex offender treatment

Diagnostic and Evaluation Center (DEC):

- *Psychiatric services
- *Crisis intervention
- *Mental health screening/assessment and referral
- *Substance abuse screening/assessment and referral

Lincoln Correctional Center (LCC):

- *Psychiatric services
- *Crisis intervention
- *Mental Health Unit
- *Anger Management
- *Inpatient Healthy Lives Program
- *COP (residential co-occurring substance abuse program)
- *Non-residential substance abuse treatment
- *bHeLP (bibliotherapy Healthy Lives Program)
- *Continuing care sex offender treatment



Nebraska Correctional Center for Women (NCCW):

- *Psychiatric services
- *Crisis intervention
- *Mental health screening/assessment and referral
- *Substance abuse screening/assessment and referral
- *Anger management
- *Residential substance abuse treatment
- *Non-residential substance abuse treatment
- *Parole violator substance abuse treatment
- *bHelp
- *oHeLP (outpatient Healthy Lives Program)

Nebraska State Penitentiary (NSP):

- *Psychiatric services
- *Crisis intervention
- *Anger management
- *Bibliotherapy Healthy Lives Program (for sex offenders)
- *Outpatient Healthy Lives Program (for sex offenders)
- *Violence Reduction Program (VRP)
- *Residential substance abuse treatment
- *Non-residential substance abuse treatment
- *Parole violator substance abuse treatment

Omaha Correctional Center (OCC):

- *Psychiatric services
- *Crisis intervention
- *Anger management
- *Bibliotherapy Healthy Lives Program (for sex offenders)
- *Outpatient Healthy Lives Program (for sex offenders)
- *Outpatient mood and anxiety groups
- *Residential substance abuse treatment
- *Non-residential substance abuse treatment

Tecumseh State Correctional Institution (TSCI):

- *Psychiatric services
- *Crisis intervention
- *Anger management
- *Residential substance abuse treatment
- *Non-residential substance abuse treatment
- *bHeLP

Work Ethic Camp (WEC):

- *Psychiatric services
- *Crisis management
- *Outpatient mental health treatment
- *Short-term residential substance abuse treatment

Nebraska Correctional Youth Facility (NCYF):

- *Psychiatric services
- *Crisis intervention
- *Mental health screening/assessment and referral
- *Substance abuse screening/assessment and referral
- *Anger/violence programming
- *Non-residential substance abuse treatment



Deputy Director of Cornhusker State Industries



The Deputy Director of Cornhusker State Industries is responsible for the oversight of the following areas.

Cornhusker State Industries:

- 4 wood shops
- 2 sewing shops
- 2 laundry facilities
- Data Entry, Braille, Chemicals, License Plates, Metal and Print Shops
- Private Industry shops
- Fleet of 8 delivery trucks

Federal Surplus Property:

- Screen, receive and distribute federal surplus property to eligible state & local governmental subdivisions and certain non-profit agencies
- Administers Law Enforcement (1033 & 1122) programs
- Administers an aviation fuel program so Nebraska's law enforcement can obtain federally discounted prices for fuel



Deputy Director John McGovern joined the Nebraska Department of Correctional Services in March 2003.

John is responsible for the overall management of Cornhusker State Industries and the Federal Surplus Program.

John has significant private sector management experience in general management, sales and marketing, manufacturing, quality, administration, business development and services industries.

John received his undergraduate degree from the University of Toledo and did post-graduate work at both the University of Toledo and Bowling Green State University.



Cornhusker State Industries



CORNHUSKER STATE INDUSTRIES
800 PIONEERS BLVD.
LINCOLN, NE 68502
402-471-4597 OR 1-800-348-7537

CSI Management Team

John McGovern	Deputy Director/General Mgr.
Steve Neff	Assistant Administrator
Jim Brebner	Assistant Administrator
Mike Martin	Budget Officer III
Jeremy Elder	Manufacturing Manager
Kate Severin	Sales & Marketing Manager
Scott Roberts	Quality Assurance
Jim Oliver	Inventory Control
Paul Norrid	ACA/HR/Safety Manager
Diane Poppert	Warehouse Manager
Brad Frandsen	Federal Surplus Property Manager

CSI—WE BUILD OPPORTUNITY

In FY2009, CSI completed initial phases of architectural design for the construction of new production buildings at OCC and TSCI. The expansion of these facilities will help CSI position itself to meet the challenges of future economic trends. CSI is also fortunate to be able to take advantage of the significant construction discounts offered by the current economic climate estimated at 20%. The expansion plans will help CSI offer more diversity in product lines such as park furniture and accessories; provide additional products and services to the department including canteen bags, sweats and foot lockers; and continue to pursue PIECP opportunities to provide real world working experience to a larger number of inmates. CSI employed an average of 554 inmates in FY2009 within traditional shops and private venture operations resulting in approximately 745,000 hours of inmate labor. Private venture contributions returned to the community in the form of state and local taxes, victim reparations, inmate room and board, family support, and release savings of almost \$498,000 in FY2009. CSI also processed nearly 6.5 million pounds of laundry for tax supported and non-profit end users.

As CSI entered FY2010, operations exploded with activity as production ran at full capacity in all four wood shops to keep up with the orders of a single customer; the Elmwood-Murdock Public School District. They placed furniture orders that exceeded \$500,000 to remodel their entire high school and elementary school campuses. It proved to be the largest single furniture order in CSI history. In addition, CSI broke ground at OCC for building expansion that is expected to be completed by the spring of 2010. At that time, ground breaking is anticipated to take place at TSCI for a similar expansion. In December 2009, our Digital License Plate shop began production for the roll out of the new 2011 plate designs that will replace the 2005 series plates on all motor vehicles registered in Nebraska. We expect to produce approximately 1.5 million plates in FY 2010 to be ready for the 01/01/2011 initial issue date. We anticipate that we will produce an additional 2 million plates throughout FY 2011 and in excess of 6 million plates over the entire 6-year cycle period.

This past summer, CSI was finally able to see efforts to offer medical transcription services come to fruition as the NCCW Data Entry Shop developed a partnership with the Beatrice State Development Center to provide transcription services. This new business effort promises to be an ever expanding service line for CSI into the future. As the calendar year ended, CSI added two additional work crew details that have been assigned to the Nebraska State Office Building. They will provide cleaning services at a great savings to the State.

CSI looks forward to partnering with the University of Nebraska-Lincoln on two important projects in the summer of 2010. The National Special Olympics are being hosted at the UNL campus in July. CSI will provide laundry services for the Special Olympics as well as the laundry for all of the traditional UNL summer programs. In addition, the NU Athletic department has contracted with CSI to manufacture 18,000 new portable stadium seats for Memorial Stadium that will attach to the bench seating throughout the stadium. These are scheduled to be produced & delivered in time for the first home game of the fall football season.

To further enhance the image of CSI to the expanding and varied customer base, staff and inmates installed new carpet throughout the Administration building. The large conference room continues to attract increasing interest and is being widely used as a multi-agency resource featuring fine CSI products throughout.

For more information about CSI's multiple product lines, programs, and history, please visit our showroom at 800 Pioneers Blvd, call us at 800-348-7537, or browse our website at www.corrections.state.ne.us/csi

Federal Surplus Property Brad Frandsen, Manager

Federal Surplus Property's (FSP) purpose is to screen, receive, and distribute surplus property to eligible state and local government subdivisions and certain non-profit agencies. The FSP Manager is appointed by the Governor of the State of Nebraska to administer and coordinate the transfer of excess federal property to Law Enforcement Agencies within the State of Nebraska. Service charges received from eligible donees and Law Enforcement Agencies (LEA's) make FSP self-supporting through its revolving fund, while still providing significant tax savings to the donees & LEA's.

The Nebraska Department of Correctional Services, through Cornhusker State Industries (CSI), operates the agency's program.



Statistical Summary



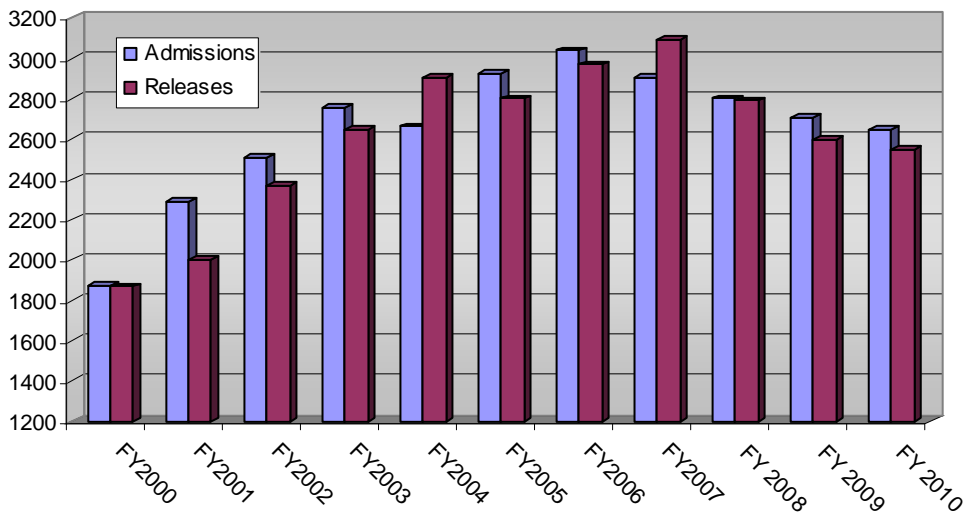


Total Admissions

FY	New Sentenced			Revocations			Evaluator/Safekeeper/WEC			Grand Total
	Males	Females	Total	Males	Females	Total	Males	Females	Total	
2000	1303	134	1437	243	27	270	140	27	167	1874
2001	1607	220	1827	199	22	221	196	47	243	2291
2002	1614	246	1860	212	17	229	331	85	416	2505
2003	1676	239	1915	199	23	222	467	149	616	2753
2004	1698	243	1941	223	30	253	384	84	468	2662
2005	1774	309	2083	307	33	340	403	98	501	2924
2006	1992	336	2328	250	33	283	338	90	428	3039
2007	1871	308	2179	226	35	261	374	88	462	2902
2008	1845	306	2151	223	23	246	325	79	404	2801
2009	1815	253	2068	252	44	296	285	60	345	2709
2010	1954	283	2237	210	20	230	139	42	181	2648

Total Releases

FY	Paroled to Nebraska			Discharges			Evaluator/Safekeeper/WEC			Grand Total
	Males	Females	Total	Males	Females	Total	Males	Females	Total	
2000	563	103	666	961	91	1052	128	22	150	1868
2001	642	80	722	1090	83	1173	172	48	220	2003
2002	665	107	772	1109	126	1235	281	77	358	2365
2003	626	111	737	1194	153	1347	430	129	559	2643
2004	1015	152	1167	1080	134	1214	419	102	521	2902
2005	953	133	1086	1079	150	1229	396	89	485	2800
2006	873	161	1034	1265	226	1491	353	91	444	2969
2007	1007	174	1181	1251	189	1440	374	97	471	3092
2008	842	186	1028	1171	176	1347	337	77	414	2789
2009	848	130	978	1104	174	1278	277	65	342	2598
2010	938	145	1083	1161	119	1280	141	40	181	2544





Average Monthly Population (Fiscal Year)



Facility	2000	2001	2002	2003	2004	2005	2006	2007	2008	2009	2010
Nebraska State Penitentiary	1191	1193	1198	1014	1091	1149	1163	1140	1141	1066	1108
Lincoln Correctional Center	507	522	511	452	462	481	493	492	472	475	486
Diagnostic & Evaluation Unit	276	392	394	366	299	281	390	354	334	302	358
Omaha Correctional Center	678	697	713	645	580	588	562	595	616	680	656
Hastings Correctional Center#	180	181	173								
Community Corrections	387	387	385	404	428	425	491	547	540	537	528
NE Correctional Treatment Center**	87	88	86								
NE Correctional Youth Facility +	63	64	74	71	66	78	97	94	85	98	91
Nebraska Center for Women	192	225	273	274	254	281	311	318	294	273	265
Tecumseh State Correctional Institution			296	794	849	801	853	858	906	948	925
Total Average Monthly Population	3561	3747	3838	4037	4029	4086	4360	4398	4388	4379	4417
% Change	+0.4%	+5.2%	+2.4%	+5.2%	-2.0%	+1.0%	+6.3%	+0.9%	-0.2%	-0.2%	+0.9%
Work Ethic Camp~		18	48	77	85	75	75	70	79	103	126
Adult Parole	566	505	560	624	695	767	710	754	822	913	962
Hastings Correctional Center BICE Holding Center#				134	128						
Total	4127	4271	4446	4871	4938	4928	5145	5222	5289	5395	5469
% Change	-0.4%	+3.5%	+4.1%	+9.6%	+2.3%	-0.2%	+4.4%	+1.5%	+1.3%	+1.0%	+1.3%

**The Nebraska Correctional Treatment Center opened in August 1994, closed June 2002.
 + The Nebraska Correctional Youth Facility opened in August, 1998
 ~ The Work Ethic Camp opened in April, 2001.
 ^ Tecumseh State Correctional Institution opened December, 2001.
 # Hastings Correctional Center became a BICE Holding Center as of June 2002, closed June 2004.

Adult Female Total Population - FY2010 Statistical Reports

Current Age

Age	Number	Percent	Cumulative Number	Cumulative Percent
18	1	0.2%	1	0.2%
19	2	0.5%	3	0.7%
20 - 24	65	16.0%	68	16.8%
25 - 29	71	17.5%	139	34.3%
30 - 34	69	17.0%	208	51.4%
35 - 39	63	15.6%	271	66.9%
40 - 44	58	14.3%	329	81.2%
45 - 49	47	11.6%	376	92.8%
50 - 54	20	4.9%	396	97.8%
55 - 59	5	1.2%	401	99.0%
60 and Over	4	1.0%	405	100.0%

Average Age

Current Age	# of Inmates
30.98	405

Race

Race	Number	Percent
White	257	63.5%
Black	71	17.5%
Hispanic	35	8.6%
Native American	31	7.7%
Other	11	2.7%
Grand Total	405	100.0%

Commitment Area

Region	Number	Percent
Metro Omaha	139	34.3%
Metro Lincoln	85	21.0%
Southeast	41	10.1%
Northeast	45	11.1%
South Central	63	15.6%
North Central	5	1.2%
Panhandle	20	4.9%
Out of State	2	0.5%
Data Unavailable	5	1.2%
Grand Total	405	100.0%

Current Custody

Custody	Number	Percent	Cumulative Number	Cumulative Percent
MAX-Restricted	70	17.3%	70	17.3%
MED-Restricted	82	20.2%	152	37.5%
MIN-Dir Con Supr	116	28.6%	268	66.2%
MIN-Intrmt Supr	44	10.9%	312	77.0%
COMM-Detail	66	16.3%	378	93.3%
COMM-Wrk / Ed Rls	27	6.7%	405	100.0%

Record Center

Record Center	Number	Percent
NCW	287	70.9%
CCL	76	18.8%
WEC	26	6.4%
CCO	16	4.0%
Grand Total	405	100.0%

Admission Type

Admission Type	Number	Percent
First-Time	293	72.3%
Multiple	105	25.9%
Unavailable	5	1.2%
Interstate Trans	2	0.5%
Grand Total	405	100.0%

Jurisdiction

Jurisdiction	Number	Percent
Nebraska	403	99.5%
Interstate Transfer	2	0.5%
Grand Total	405	100.0%

Adult Female Total Population - FY2010 Statistical Reports

Previous Parole

Parole	Number	Percent
NO	400	98.8%
YES	5	1.2%
Grand Total	405	100.0%

Marital Status

Marital Status	Number	Percent
SINGLE	186	45.9%
MARRIED	126	31.1%
DIVORCED	65	16.0%
DATA UNAVAILABLE	15	3.7%
SEPARATED	7	1.7%
WIDOWED	6	1.5%
Grand Total	405	100.0%

Religion

Religion	Number	Percent
CHRISTIAN	130	32.1%
CATHOLIC	77	19.0%
NONE	44	10.9%
BAPTIST	36	8.9%
LUTHERAN	29	7.2%
PROTESTANT	13	3.2%
PENTECOSTAL	11	2.7%
NATIVE AMERICAN	10	2.5%
WICCAN	10	2.5%
METHODIST	8	2.0%
PRESBYTERIAN	6	1.5%
MORMON/LDS	4	1.0%
ISLAM/MUSLIM	2	0.5%
JEHOVAHS WITNESS	2	0.5%
MUSLIM/ISLAM	2	0.5%
ASSEMBLY OF GOD	1	0.2%
BEREAN	1	0.2%
CHURCH OF GOD	1	0.2%
EPISCOPAL	1	0.2%
NAZARENE	1	0.2%
SEVENTH DAY ADVENT	1	0.2%
Unknown	15	3.7%
Grand Total	405	100.0%

Avg Min & Max Sentence (Life set to 10-year average of 18.46 Yrs)

Avg MIN Sentence Mo's	Avg MAX Sentence Mo's	# of Inmates
68.22	111.77	405

Average Length of Stay

Years	Months	Days	# of Inmates
2.38	28.51	867	405

Length of Stay in Institution

Month/Year	Number	Percent	Cumulative Number	Cumulative Percent
7 - 12 Months	147	36.3%	147	36.3%
13 - 18 Months	76	18.8%	223	55.1%
19 - 24 Months	42	10.4%	265	65.4%
25 - 30 Months	20	4.9%	285	70.4%
31 - 36 Months	36	8.9%	321	79.3%
37 - 42 Months	15	3.7%	336	83.0%
43 - 48 Months	19	4.7%	355	87.7%
49 - 54 Months	9	2.2%	364	89.9%
55 - 60 Months	4	1.0%	368	90.9%
5.01 - 6.00 Yrs	8	2.0%	376	92.8%
6.01 - 7.00 Yrs	8	2.0%	384	94.8%
7.01 - 8.00 Yrs	2	0.5%	386	95.3%
8.01 - 9.00 Yrs	3	0.7%	389	96.0%
9.01 - 10.00 Yrs	4	1.0%	393	97.0%
10.01 - 11.00 Yrs	1	0.2%	394	97.3%
11.01 - 12.00 Yrs	2	0.5%	396	97.8%
12.01 - 13.00 Yrs	2	0.5%	398	98.3%
13.01 - 14.00 Yrs	1	0.2%	399	98.5%
15.01 - 16.00 Yrs	2	0.5%	401	99.0%
16.01 - 17.00 Yrs	1	0.2%	402	99.3%
Over 20 Years	3	0.7%	405	100.0%

Adult Female Total Population - FY2010 Statistical Reports

Most Serious Offense

Offense Arrest	Number	Percent
THEFT	67	16.8%
POS CNTRL SUB EXCEPT MARIJUANA	53	13.3%
MANU/DIST/DEL/DISP OR POSS W/I	46	11.5%
FORGERY	34	8.5%
DRIVING UNDER INFLUENCE/INJURY	28	7.0%
ASSAULT	22	5.5%
ROBBERY	21	5.3%
CHILD ABUSE	16	4.0%
BURGLARY	15	3.8%
MANSLAUGHTER	9	2.3%
ACCESSORY TO A FELONY	8	2.0%
MURDER 2ND DEGREE	7	1.8%
VIOL OF FINANCIAL TRANS DEVICE	7	1.8%
DRIVING UNDER REVOKED LICENSE	6	1.5%
MURDER 1ST DEGREE	6	1.5%
BAD CHECKS	5	1.3%
SEXUAL ASSAULT 1ST DEGREE	5	1.3%
SEXUAL ASSULT OF CHILD 1ST DEG	5	1.3%
AQUIRING CONT SUBSTNC BY FRAUD	4	1.0%
CRIMINAL IMPERSONATION	4	1.0%
DLNG NARCOTICS/CNTRL SUBSTANCE	3	0.8%
MOTOR VEHICLE HOMICIDE	3	0.8%
ASLT PEAC OFCR/DCS EMP	2	0.5%
CONSPIRACY	2	0.5%
DRIVING WHILE INTOXICATED	2	0.5%
FALSE IMPRISONMENT 1ST DEGREE	2	0.5%
POSS/RECEIVE STOLEN FIREARM	2	0.5%
SEXUAL ASSAULT ON A CHILD	2	0.5%
UNLAWFUL DISCHARGE OF FIREARM	2	0.5%
ASSAULT BY A CONFINED PERSON	1	0.3%
CLASS I MISDEMEANOR	1	0.3%
CONTRIBUT TO DELINQUENCY MINOR	1	0.3%
CRIMINAL TRESPASS	1	0.3%
ESCAPE	1	0.3%
FAILURE TO APPEAR	1	0.3%
KIDNAPPING	1	0.3%
LEAVE SCENE OF INJURY ACCIDENT	1	0.3%
OPERATE MOTOR VEH/AVOID ARREST	1	0.3%
VISL DEPICT SEXL EXPLICIT COND	1	0.3%
VULNERABLE ADULT ABUSE	1	0.3%
Grand Total	399	100.0%

Data Unavailable: 6

Most Serious Offense Category

Offense Category	# of Inmates	Percent
Drugs	106	26.6%
Theft	67	16.8%
Fraud	50	12.5%
Assault	42	10.5%
Motor Vehicle	41	10.3%
Homicide	22	5.5%
Robbery	21	5.3%
Burglary	15	3.8%
Other	14	3.5%
Sex Offenses	12	3.0%
Weapons	4	1.0%
Restraint	3	0.8%
Morals	2	0.5%
Grand Total	399	100.0%

Data Unavailable: 6

Adult Female Total Population - FY2010 Statistical Reports

Minimum Sentence

Years	Number	Percent	Cumulative Number	Cumulative Percent
1.00 Yr or Less	51	12.6%	51	12.6%
1.01-2.00 Yrs	116	28.6%	167	41.2%
2.01-3.00 Yrs	60	14.8%	227	56.0%
3.01-4.00 Yrs	43	10.6%	270	66.7%
4.01-5.00 Yrs	26	6.4%	296	73.1%
5.01-6.00 Yrs	14	3.5%	310	76.5%
6.01-7.00 Yrs	7	1.7%	317	78.3%
7.01-8.00 Yrs	11	2.7%	328	81.0%
8.01-9.00 Yrs	8	2.0%	336	83.0%
9.01-10.00 Yrs	14	3.5%	350	86.4%
10.01-11.00 Yrs	3	0.7%	353	87.2%
11.01-12.00 Yrs	5	1.2%	358	88.4%
12.01-13.00 Yrs	5	1.2%	363	89.6%
14.01-15.00 Yrs	4	1.0%	367	90.6%
15.01-16.00 Yrs	1	0.2%	368	90.9%
16.01-17.00 Yrs	1	0.2%	369	91.1%
17.01-18.00 Yrs	2	0.5%	371	91.6%
18.01-19.00 Yrs	1	0.2%	372	91.9%
19.01-20.00 Yrs	6	1.5%	378	93.3%
Over 20 Years	18	4.4%	396	97.8%
Life	9	2.2%	405	100.0%

Maximum Sentence

Years	Number	Percent	Cumulative Number	Cumulative Percent
1.00 Yr or Less	23	5.7%	23	5.7%
1.01-2.00 Yrs	28	6.9%	51	12.6%
2.01-3.00 Yrs	49	12.1%	100	24.7%
3.01-4.00 Yrs	50	12.3%	150	37.0%
4.01-5.00 Yrs	60	14.8%	210	51.9%
5.01-6.00 Yrs	34	8.4%	244	60.2%
6.01-7.00 Yrs	15	3.7%	259	64.0%
7.01-8.00 Yrs	18	4.4%	277	68.4%
8.01-9.00 Yrs	6	1.5%	283	69.9%
9.01-10.00 Yrs	22	5.4%	305	75.3%
10.01-11.00 Yrs	2	0.5%	307	75.8%
11.01-12.00 Yrs	11	2.7%	318	78.5%
12.01-13.00 Yrs	4	1.0%	322	79.5%
13.01-14.00 Yrs	8	2.0%	330	81.5%
14.01-15.00 Yrs	7	1.7%	337	83.2%
15.01-16.00 Yrs	8	2.0%	345	85.2%
16.01-17.00 Yrs	1	0.2%	346	85.4%
17.01-18.00 Yrs	2	0.5%	348	85.9%
18.01-19.00 Yrs	3	0.7%	351	86.7%
19.01-20.00 Yrs	12	3.0%	363	89.6%
Over 20 Years	33	8.1%	396	97.8%
Life	9	2.2%	405	100.0%

Adult Male Total Population - FY2010 Statistical Reports

Current Age

Age	Number	Percent	Cumulative Number	Cumulative Percent
17	10	0.2%	10	0.2%
18	27	0.7%	37	0.9%
19	55	1.3%	92	2.2%
20 - 24	682	16.6%	774	18.8%
25 - 29	708	17.2%	1482	36.0%
30 - 34	628	15.3%	2110	51.2%
35 - 39	529	12.8%	2639	64.1%
40 - 44	400	9.7%	3039	73.8%
45 - 49	417	10.1%	3456	83.9%
50 - 54	340	8.3%	3796	92.2%
55 - 59	143	3.5%	3939	95.7%
60 and Over	179	4.3%	4118	100.0%

Average Age

Current Age	# of Inmates
32.24	4118

Race

Race	Number	Percent
White	2248	54.6%
Black	1099	26.7%
Hispanic	541	13.1%
Native American	176	4.3%
Asian	39	0.9%
Other	10	0.2%
Data Unavailable	3	0.1%
Hawaiian / Pacific Islander	2	0.0%
Grand Total	4118	100.0%

Commitment Area

Region	Number	Percent
Metro Omaha	1641	39.8%
Metro Lincoln	725	17.6%
Southeast	383	9.3%
Northeast	472	11.5%
South Central	590	14.3%
North Central	43	1.0%
Panhandle	225	5.5%
Out of State	17	0.4%
Data Unavailable	22	0.5%
Grand Total	4118	100.0%

Current Custody

Custody	Number	Percent	Cumulative Number	Cumulative Percent
MAX-Restricted	1337	32.5%	1337	32.5%
MED-Restricted	1159	28.1%	2496	60.6%
MIN-Dir Con Supr	1089	26.4%	3585	87.1%
MIN-Intrmt Supr	75	1.8%	3660	88.9%
COMM-Detail	263	6.4%	3923	95.3%
COMM-Wrk / Ed Ris	194	4.7%	4117	100.0%
COMM-W Level A	1	0.0%	4118	100.0%

Record Center

Record Center	Number	Percent	Cumulative Number	Cumulative Percent
NSP	1126	27.3%	1126	27.3%
TSC	919	22.3%	2045	49.7%
OCC	647	15.7%	2692	65.4%
LCC	496	12.0%	3188	77.4%
DEC	344	8.4%	3532	85.8%
CCL	285	6.9%	3817	92.7%
CCO	138	3.4%	3955	96.0%
NCY	92	2.2%	4047	98.3%
WEC	71	1.7%	4118	100.0%

Admission Type

Admission Type	Number	Percent
First-Time	2456	59.6%
Multiple	1628	39.5%
Interstate Trans	17	0.4%
Unavailable	17	0.4%
Grand Total	4118	100.0%

Jurisdiction

Jurisdiction	Number	Percent
Nebraska	4101	99.6%
Interstate Transfer	17	0.4%
Grand Total	4118	100.0%

Adult Male Total Population - FY2010 Statistical Reports

Previous Parole

Parole	Number	Percent
NO	3921	95.2%
YES	197	4.8%
Grand Total	4118	100.0%

Marital Status

Marital Status	Number	Percent
SINGLE	2448	59.4%
MARRIED	959	23.3%
DIVORCED	627	15.2%
WIDOWED	35	0.8%
DATA UNAVAILABLE	33	0.8%
COMMON LAW	8	0.2%
SEPARATED	7	0.2%
OTHER	1	0.0%
Grand Total	4118	100.0%

Most Serious Offense Category

Offense Category	# of Inmates	Percent
Sex Offenses	757	18.5%
Assault	543	13.3%
Drugs	506	12.4%
Homicide	488	11.9%
Robbery	380	9.3%
Burglary	351	8.6%
Motor Vehicle	305	7.5%
Theft	292	7.1%
Other	115	2.8%
Fraud	101	2.5%
Weapons	98	2.4%
Morals	64	1.6%
Restraint	61	1.5%
Arson	28	0.7%
Grand Total	4089	100.0%

Data Unavailable: 29

Average Length of Stay

Years	Months	Days	# of Inmates
4.73	56.81	1729	4118

Length of Stay in Institution

Month/Year	Number	Percent	Cumulative Number	Cumulative Percent
7 - 12 Months	900	21.9%	900	21.9%
13 - 18 Months	576	14.0%	1476	35.8%
19 - 24 Months	418	10.2%	1894	46.0%
25 - 30 Months	138	3.4%	2032	49.3%
31 - 36 Months	378	9.2%	2410	58.5%
37 - 42 Months	152	3.7%	2562	62.2%
43 - 48 Months	165	4.0%	2727	66.2%
49 - 54 Months	138	3.4%	2865	69.6%
55 - 60 Months	116	2.8%	2981	72.4%
5.01 - 6.00 Yrs	206	5.0%	3187	77.4%
6.01 - 7.00 Yrs	143	3.5%	3330	80.9%
7.01 - 8.00 Yrs	128	3.1%	3458	84.0%
8.01 - 9.00 Yrs	88	2.1%	3546	86.1%
9.01 - 10.00 Yrs	62	1.5%	3608	87.6%
10.01 - 11.00 Yrs	60	1.5%	3668	89.1%
11.01 - 12.00 Yrs	54	1.3%	3722	90.4%
12.01 - 13.00 Yrs	35	0.8%	3757	91.2%
13.01 - 14.00 Yrs	19	0.5%	3776	91.7%
14.01 - 15.00 Yrs	34	0.8%	3810	92.5%
15.01 - 16.00 Yrs	36	0.9%	3846	93.4%
16.01 - 17.00 Yrs	36	0.9%	3882	94.3%
17.01 - 18.00 Yrs	25	0.6%	3907	94.9%
18.01 - 19.00 Yrs	22	0.5%	3929	95.4%
19.01 - 20.00 Yrs	19	0.5%	3948	95.9%
Over 20 Years	170	4.1%	4118	100.0%

Avg Min & Max Sentence

(Life set to 10-year average of 18.46 Yrs)

Avg MIN Sentence Mo's	Avg MAX Sentence Mo's	# of Inmates
145.60	218.77	4118

Adult Male Total Population - FY2010 Statistical Reports

Minimum Sentence

Years	Number	Percent	Cumulative Number	Cumulative Percent
1.00 Yr or Less	283	6.9%	283	6.9%
1.01-2.00 Yrs	644	15.6%	927	22.5%
2.01-3.00 Yrs	339	8.2%	1266	30.7%
3.01-4.00 Yrs	333	8.1%	1599	38.8%
4.01-5.00 Yrs	267	6.5%	1866	45.3%
5.01-6.00 Yrs	173	4.2%	2039	49.5%
6.01-7.00 Yrs	107	2.6%	2146	52.1%
7.01-8.00 Yrs	149	3.6%	2295	55.7%
8.01-9.00 Yrs	54	1.3%	2349	57.0%
9.01-10.00 Yrs	286	6.9%	2635	64.0%
10.01-11.00 Yrs	34	0.8%	2669	64.8%
11.01-12.00 Yrs	100	2.4%	2769	67.2%
12.01-13.00 Yrs	24	0.6%	2793	67.8%
13.01-14.00 Yrs	60	1.5%	2853	69.3%
14.01-15.00 Yrs	131	3.2%	2984	72.5%
15.01-16.00 Yrs	39	0.9%	3023	73.4%
16.01-17.00 Yrs	35	0.8%	3058	74.3%
17.01-18.00 Yrs	62	1.5%	3120	75.8%
18.01-19.00 Yrs	16	0.4%	3136	76.2%
19.01-20.00 Yrs	170	4.1%	3306	80.3%
Over 20 Years	588	14.3%	3894	94.6%
Life	212	5.1%	4106	99.7%
Death	12	0.3%	4118	100.0%

Maximum Sentence

Years	Number	Percent	Cumulative Number	Cumulative Percent
1.00 Yr or Less	94	2.3%	94	2.3%
1.01-2.00 Yrs	159	3.9%	253	6.1%
2.01-3.00 Yrs	276	6.7%	529	12.8%
3.01-4.00 Yrs	282	6.8%	811	19.7%
4.01-5.00 Yrs	420	10.2%	1231	29.9%
5.01-6.00 Yrs	202	4.9%	1433	34.8%
6.01-7.00 Yrs	86	2.1%	1519	36.9%
7.01-8.00 Yrs	161	3.9%	1680	40.8%
8.01-9.00 Yrs	74	1.8%	1754	42.6%
9.01-10.00 Yrs	274	6.7%	2028	49.2%
10.01-11.00 Yrs	45	1.1%	2073	50.3%
11.01-12.00 Yrs	147	3.6%	2220	53.9%
12.01-13.00 Yrs	33	0.8%	2253	54.7%
13.01-14.00 Yrs	49	1.2%	2302	55.9%
14.01-15.00 Yrs	146	3.5%	2448	59.4%
15.01-16.00 Yrs	52	1.3%	2500	60.7%
16.01-17.00 Yrs	25	0.6%	2525	61.3%
17.01-18.00 Yrs	37	0.9%	2562	62.2%
18.01-19.00 Yrs	13	0.3%	2575	62.5%
19.01-20.00 Yrs	256	6.2%	2831	68.7%
Over 20 Years	972	23.6%	3803	92.4%
Life	303	7.4%	4106	99.7%
Death	12	0.3%	4118	100.0%

Parole Population - FY2010 Statistical Reports

Current Age

Age	Number	Percent	Cumulative Number	Cumulative Percent
20 - 24	132	12.5%	132	12.5%
25 - 29	202	19.2%	334	31.7%
30 - 34	174	16.5%	508	48.3%
35 - 39	136	12.9%	644	61.2%
40 - 44	127	12.1%	771	73.3%
45 - 49	115	10.9%	886	84.2%
50 - 54	94	8.9%	980	93.2%
55 - 59	39	3.7%	1019	96.9%
60 and Over	33	3.1%	1052	100.0%

Average Age

Current Age	# of Inmates
33.02	1052

Race

Race	Number	Percent
White	652	62.0%
Black	216	20.5%
Hispanic	133	12.6%
Native American	37	3.5%
Other	7	0.7%
Asian	6	0.6%
Hawaiian / Pacific Islander	1	0.1%
Grand Total	1052	100.0%

Parole Indicator

In Out Codes	Number	Percent
Nebraska Parolees in Nebraska	689	65.5%
Nebraska Paroles to Other States	71	6.7%
Interstate Transfers	205	19.5%
Nebraska Paroled to Detainers	87	8.3%
Grand Total	1052	100.0%

Previous Parole

Parole	Number	Percent
NO	1009	95.9%
YES	43	4.1%
Grand Total	1052	100.0%

Not including lifetime sex offenders = 16

Admission Type

Admission Type	Number	Percent
First-Time	557	52.9%
Interstate Trans	205	19.5%
Multiple	290	27.6%
Grand Total	1052	100.0%

Gender

Gender	Number	Percent
Male	901	85.6%
Female	151	14.4%
Grand Total	1052	100.0%

Parole Population - FY2010 Statistical Reports

Most Serious Offense Category

Offense Category	# of Inmates	Percent
Drugs	323	30.8%
Motor Vehicle	124	11.8%
Theft	110	10.5%
Robbery	105	10.0%
Burglary	104	9.9%
Assault	81	7.7%
Fraud	62	5.9%
Homicide	47	4.5%
Sex Offenses	36	3.4%
Other	32	3.1%
Weapons	16	1.5%
Arson	4	0.4%
Morals	3	0.3%
Data Unavailable	1	0.1%
Restraint	1	0.1%
Grand Total	1049	100.0%

Data Unavailable: 3

Commitment Area

Region	Number	Percent
Metro Omaha	286	27.2%
Metro Lincoln	171	16.3%
Southeast	90	8.6%
Northeast	126	12.0%
South Central	113	10.7%
North Central	3	0.3%
Panhandle	58	5.5%
Out of State	202	19.2%
Data Unavailable	3	0.3%
Grand Total	1052	100.0%

Length of Stay in Institution

Month/Year	Number	Percent	Cumulative Number	Cumulative Percent
0 - 6 Months	36	4.3%	36	4.3%
7 - 12 Months	214	25.3%	250	29.5%
13 - 18 Months	169	20.0%	419	49.5%
19 - 24 Months	98	11.6%	517	61.0%
25 - 30 Months	23	2.7%	540	63.8%
31 - 36 Months	71	8.4%	611	72.1%
37 - 42 Months	32	3.8%	643	75.9%
43 - 48 Months	24	2.8%	667	78.7%
49 - 54 Months	23	2.7%	690	81.5%
55 - 60 Months	30	3.5%	720	85.0%
5.01 - 6.00 Yrs	21	2.5%	741	87.5%
6.01 - 7.00 Yrs	19	2.2%	760	89.7%
7.01 - 8.00 Yrs	15	1.8%	775	91.5%
8.01 - 9.00 Yrs	7	0.8%	782	92.3%
9.01 - 10.00 Yrs	7	0.8%	789	93.2%
10.01 - 11.00 Yrs	11	1.3%	800	94.5%
11.01 - 12.00 Yrs	1	0.1%	801	94.6%
12.01 - 13.00 Yrs	8	0.9%	809	95.5%
13.01 - 14.00 Yrs	7	0.8%	816	96.3%
14.01 - 15.00 Yrs	5	0.6%	821	96.9%
15.01 - 16.00 Yrs	2	0.2%	823	97.2%
16.01 - 17.00 Yrs	2	0.2%	825	97.4%
17.01 - 18.00 Yrs	6	0.7%	831	98.1%
18.01 - 19.00 Yrs	3	0.4%	834	98.5%
19.01 - 20.00 Yrs	1	0.1%	835	98.6%
Over 20 Years	12	1.4%	847	100.0%

Not including interstate transfers to parole = 205
 Not including lifetime sex offenders = 16

Average Length of Stay in Institution

Years	Months	Days	# of Inmates
3.12	37.42	1139	847

Parole Population - FY2010 Statistical Reports

Minimum Sentence

Years	Number	Percent	Cumulative Number	Cumulative Percent
1.00 Yr or Less	80	7.6%	80	7.6%
1.01-2.00 Yrs	279	26.5%	359	34.1%
2.01-3.00 Yrs	145	13.8%	504	47.9%
3.01-4.00 Yrs	125	11.9%	629	59.8%
4.01-5.00 Yrs	89	8.5%	718	68.3%
5.01-6.00 Yrs	48	4.6%	766	72.8%
6.01-7.00 Yrs	29	2.8%	795	75.6%
7.01-8.00 Yrs	39	3.7%	834	79.3%
8.01-9.00 Yrs	21	2.0%	855	81.3%
9.01-10.00 Yrs	60	5.7%	915	87.0%
10.01-11.00 Yrs	16	1.5%	931	88.5%
11.01-12.00 Yrs	20	1.9%	951	90.4%
12.01-13.00 Yrs	13	1.2%	964	91.6%
13.01-14.00 Yrs	10	1.0%	974	92.6%
14.01-15.00 Yrs	15	1.4%	989	94.0%
15.01-16.00 Yrs	5	0.5%	994	94.5%
16.01-17.00 Yrs	6	0.6%	1000	95.1%
17.01-18.00 Yrs	2	0.2%	1002	95.2%
19.01-20.00 Yrs	15	1.4%	1017	96.7%
Over 20 Years	32	3.0%	1049	99.7%
Life	3	0.3%	1052	100.0%

Maximum Sentence

Years	Number	Percent	Cumulative Number	Cumulative Percent
1.00 Yr or Less	16	1.5%	16	1.5%
1.01-2.00 Yrs	53	5.0%	69	6.6%
2.01-3.00 Yrs	123	11.7%	192	18.3%
3.01-4.00 Yrs	131	12.5%	323	30.7%
4.01-5.00 Yrs	171	16.3%	494	47.0%
5.01-6.00 Yrs	73	6.9%	567	53.9%
6.01-7.00 Yrs	44	4.2%	611	58.1%
7.01-8.00 Yrs	65	6.2%	676	64.3%
8.01-9.00 Yrs	29	2.8%	705	67.0%
9.01-10.00 Yrs	82	7.8%	787	74.8%
10.01-11.00 Yrs	16	1.5%	803	76.3%
11.01-12.00 Yrs	22	2.1%	825	78.4%
12.01-13.00 Yrs	12	1.1%	837	79.6%
13.01-14.00 Yrs	14	1.3%	851	80.9%
14.01-15.00 Yrs	32	3.0%	883	83.9%
15.01-16.00 Yrs	14	1.3%	897	85.3%
16.01-17.00 Yrs	8	0.8%	905	86.0%
17.01-18.00 Yrs	6	0.6%	911	86.6%
18.01-19.00 Yrs	6	0.6%	917	87.2%
19.01-20.00 Yrs	34	3.2%	951	90.4%
Over 20 Years	77	7.3%	1028	97.7%
Life	24	2.3%	1052	100.0%

New Sentenced Admissions - FY2010 Statistical Reports

Age at Admission

Age	Number	Percent	Cumulative Number	Cumulative Percent
16	5	0.2%	5	0.2%
17	31	1.4%	36	1.6%
18	61	2.7%	97	4.3%
19	88	3.9%	185	8.3%
20 - 24	487	21.8%	672	30.0%
25 - 29	413	18.5%	1085	48.5%
30 - 34	319	14.3%	1404	62.8%
35 - 39	260	11.6%	1664	74.4%
40 - 44	216	9.7%	1880	84.0%
45 - 49	186	8.3%	2066	92.4%
50 - 54	101	4.5%	2167	96.9%
55 - 59	39	1.7%	2206	98.6%
60 and Over	31	1.4%	2237	100.0%

Average Age at Admission

Gender	Age at Admission	# of Inmates
Male	32.59	1954
Female	33.83	283
Grand Total	32.75	2237

Race

Race	Number	Percent
White	1234	55.2%
Black	528	23.6%
Hispanic	341	15.2%
Native American	95	4.2%
Asian	18	0.8%
Other	16	0.7%
Data Unavailable	3	0.1%
Hawaiian / Pacific Islander	2	0.1%
Grand Total	2237	100.0%

Gender

Gender	Number	Percent
Male	1954	87.3%
Female	283	12.7%
Grand Total	2237	100.0%

Admission Type

Admission Type	Number	Percent
First-Time	1401	62.6%
Multiple	803	35.9%
Unavailable	22	1.0%
Interstate Trans	11	0.5%
Grand Total	2237	100.0%

Admissions By Month

Month/Year	# of Inmates	Percent
2009/07	173	7.7%
2009/08	187	8.4%
2009/09	159	7.1%
2009/10	188	8.4%
2009/11	147	6.6%
2009/12	197	8.8%
2010/01	172	7.7%
2010/02	207	9.3%
2010/03	223	10.0%
2010/04	193	8.6%
2010/05	179	8.0%
2010/06	212	9.5%
Grand Total	2237	100.0%

Avg Min & Max Sentence

(Life set to 10-year average of 18.46 Yrs)

Avg MIN Sentence Mo's	Avg MAX Sentence Mo's	# of Inmates
47.94	76.55	2237

New Sentenced Admissions - FY2010 Statistical Reports

Most Serious Offense Category - Females

Offense Category	# of Inmates	Percent
Drugs	89	32.0%
Theft	56	20.1%
Fraud	41	14.7%
Motor Vehicle	26	9.4%
Assault	22	7.9%
Other	14	5.0%
Burglary	10	3.6%
Robbery	6	2.2%
Restraint	4	1.4%
Sex Offenses	4	1.4%
Homicide	2	0.7%
Morals	2	0.7%
Weapons	2	0.7%
Grand Total	278	100.0%

Data Unavailable: 5

Most Serious Offense Category - Total

Offense Category	# of Inmates	Percent
Drugs	446	20.2%
Assault	311	14.1%
Motor Vehicle	294	13.3%
Theft	250	11.3%
Sex Offenses	215	9.7%
Burglary	188	8.5%
Fraud	132	6.0%
Robbery	108	4.9%
Other	104	4.7%
Weapons	67	3.0%
Homicide	33	1.5%
Morals	32	1.4%
Restraint	18	0.8%
Arson	11	0.5%
Data Unavailable	1	0.0%
Grand Total	2210	100.0%

Data Unavailable: 27

Commitment Area - Females

Region	Number	Percent
Metro Omaha	100	35.3%
Metro Lincoln	47	16.6%
Southeast	33	11.7%
Northeast	46	16.3%
South Central	35	12.4%
North Central	6	2.1%
Panhandle	11	3.9%
Data Unavailable	5	1.8%
Grand Total	283	100.0%

Most Serious Offense Category - Males

Offense Category	# of Inmates	Percent
Drugs	357	18.5%
Assault	289	15.0%
Motor Vehicle	268	13.9%
Sex Offenses	211	10.9%
Theft	194	10.0%
Burglary	178	9.2%
Robbery	102	5.3%
Fraud	91	4.7%
Other	90	4.7%
Weapons	65	3.4%
Homicide	31	1.6%
Morals	30	1.6%
Restraint	14	0.7%
Arson	11	0.6%
Data Unavailable	1	0.1%
Grand Total	1932	100.0%

Data Unavailable: 22

Commitment Area - Total

Region	Number	Percent
Metro Omaha	888	39.7%
Metro Lincoln	348	15.6%
Southeast	201	9.0%
Northeast	353	15.8%
South Central	294	13.1%
North Central	24	1.1%
Panhandle	92	4.1%
Out of State	11	0.5%
Data Unavailable	26	1.2%
Grand Total	2237	100.0%

Commitment Area - Males

Region	Number	Percent
Metro Omaha	788	40.3%
Metro Lincoln	301	15.4%
Southeast	168	8.6%
Northeast	307	15.7%
South Central	259	13.3%
North Central	18	0.9%
Panhandle	81	4.1%
Out of State	11	0.6%
Data Unavailable	21	1.1%
Grand Total	1954	100.0%

New Sentenced Admissions - FY2010 Statistical Reports

Minimum Sentence

Years	Number	Percent	Cumulative Number	Cumulative Percent
1.00 Yr or Less	642	28.7%	642	28.7%
1.01-2.00 Yrs	734	32.8%	1376	61.5%
2.01-3.00 Yrs	247	11.0%	1623	72.6%
3.01-4.00 Yrs	170	7.6%	1793	80.2%
4.01-5.00 Yrs	123	5.5%	1916	85.7%
5.01-6.00 Yrs	58	2.6%	1974	88.2%
6.01-7.00 Yrs	24	1.1%	1998	89.3%
7.01-8.00 Yrs	44	2.0%	2042	91.3%
8.01-9.00 Yrs	13	0.6%	2055	91.9%
9.01-10.00 Yrs	38	1.7%	2093	93.6%
10.01-11.00 Yrs	5	0.2%	2098	93.8%
11.01-12.00 Yrs	14	0.6%	2112	94.4%
12.01-13.00 Yrs	3	0.1%	2115	94.5%
13.01-14.00 Yrs	6	0.3%	2121	94.8%
14.01-15.00 Yrs	18	0.8%	2139	95.6%
15.01-16.00 Yrs	4	0.2%	2143	95.8%
16.01-17.00 Yrs	2	0.1%	2145	95.9%
17.01-18.00 Yrs	9	0.4%	2154	96.3%
18.01-19.00 Yrs	1	0.0%	2155	96.3%
19.01-20.00 Yrs	13	0.6%	2168	96.9%
Over 20 Years	67	3.0%	2235	99.9%
Life	2	0.1%	2237	100.0%

Maximum Sentence

Years	Number	Percent	Cumulative Number	Cumulative Percent
1.00 Yr or Less	317	14.2%	317	14.2%
1.01-2.00 Yrs	357	16.0%	674	30.1%
2.01-3.00 Yrs	355	15.9%	1029	46.0%
3.01-4.00 Yrs	275	12.3%	1304	58.3%
4.01-5.00 Yrs	290	13.0%	1594	71.3%
5.01-6.00 Yrs	137	6.1%	1731	77.4%
6.01-7.00 Yrs	46	2.1%	1777	79.4%
7.01-8.00 Yrs	76	3.4%	1853	82.8%
8.01-9.00 Yrs	29	1.3%	1882	84.1%
9.01-10.00 Yrs	85	3.8%	1967	87.9%
10.01-11.00 Yrs	11	0.5%	1978	88.4%
11.01-12.00 Yrs	45	2.0%	2023	90.4%
12.01-13.00 Yrs	6	0.3%	2029	90.7%
13.01-14.00 Yrs	11	0.5%	2040	91.2%
14.01-15.00 Yrs	34	1.5%	2074	92.7%
15.01-16.00 Yrs	14	0.6%	2088	93.3%
16.01-17.00 Yrs	1	0.0%	2089	93.4%
17.01-18.00 Yrs	4	0.2%	2093	93.6%
18.01-19.00 Yrs	3	0.1%	2096	93.7%
19.01-20.00 Yrs	37	1.7%	2133	95.4%
Over 20 Years	94	4.2%	2227	99.6%
Life	10	0.4%	2237	100.0%

Revocations Admissions - FY2010 Statistical Reports

Age at Admission

Age	Number	Percent	Cumulative Number	Cumulative Percent
16	1	0.4%	1	0.4%
17	1	0.4%	2	0.9%
18	10	4.3%	12	5.2%
19	8	3.5%	20	8.7%
20 - 24	65	28.3%	85	37.0%
25 - 29	40	17.4%	125	54.3%
30 - 34	35	15.2%	160	69.6%
35 - 39	27	11.7%	187	81.3%
40 - 44	20	8.7%	207	90.0%
45 - 49	15	6.5%	222	96.5%
50 - 54	7	3.0%	229	99.6%
55 - 59	1	0.4%	230	100.0%

Average Age at Admission

Age at Admission	Number
30.83	230

Gender

Gender	Number	Percent
Male	210	91.3%
Female	20	8.7%
Grand Total	230	100.0%

Race

Race	Number	Percent
WHITE	126	54.8%
BLACK	73	31.7%
HISPANIC	21	9.1%
NATIVE AMERICAN	9	3.9%
ASIAN	1	0.4%
Grand Total	230	100.0%

Admission Status

Status	Number	Percent
First - Time	113	49.1%
Multiple	117	50.9%
Grand Total	230	100.0%

Parole Year & Month

Date on Parole	Number	Percent
1997/04	1	0.4%
1999/05	1	0.4%
2003/01	1	0.4%
2004/01	1	0.4%
2004/05	1	0.4%
2004/11	1	0.4%
2005/02	1	0.4%
2005/04	1	0.4%
2005/05	1	0.4%
2006/03	1	0.4%
2006/10	1	0.4%
2006/11	1	0.4%
2006/12	1	0.4%
2007/01	2	0.9%
2007/03	3	1.3%
2007/05	3	1.3%
2007/06	2	0.9%
2007/09	1	0.4%
2007/10	2	0.9%
2007/11	1	0.4%
2007/12	2	0.9%
2008/02	7	3.0%
2008/03	1	0.4%
2008/04	4	1.7%
2008/05	3	1.3%
2008/06	4	1.7%
2008/07	7	3.0%
2008/08	5	2.2%
2008/09	5	2.2%
2008/10	6	2.6%
2008/11	7	3.0%
2008/12	7	3.0%
2009/01	12	5.2%
2009/02	7	3.0%
2009/03	17	7.4%
2009/04	8	3.5%
2009/05	10	4.3%
2009/06	17	7.4%
2009/07	16	7.0%
2009/08	24	10.4%
2009/09	9	3.9%
2009/10	15	6.5%
2009/11	12	5.2%
2009/12	8	3.5%
2010/01	4	1.7%
2010/02	3	1.3%
Grand Total	230	100.0%

Revocations Admissions - FY2010 Statistical Reports

Most Serious Offense / FEMALE

Offense	Number	Percent
POS CNTRL SUB EXCEPT MARIJUANA	8	40.0%
MANU/DIST/DEL/DISP OR POSS W/I	3	15.0%
FORGERY 2ND DEGREE	2	10.0%
ASLT PEAC OFCR/DCS EMP 3RD DGR	1	5.0%
BURGLARY	1	5.0%
DRIVING UNDER INFLUENCE/INJURY	1	5.0%
DRIVING UNDER REVOKED LICENSE	1	5.0%
THEFT BY DECEPTION	1	5.0%
THEFT BY UNLWFL TAKING OR DISP	1	5.0%
VIOL OF FINANCIAL TRANS DEVICE	1	5.0%
Grand Total	20	100.0%

Most Serious Offense / MALE

Offense	Number	Percent
BURGLARY	33	15.7%
MANU/DIST/DEL/DISP OR POSS W/I	23	11.0%
POS CNTRL SUB EXCEPT MARIJUANA	23	11.0%
THEFT BY RECEIVING STOLEN PROP	23	11.0%
ROBBERY	21	10.0%
ASSAULT 1ST DEGREE	10	4.8%
DRIVING WHILE INTOXICATED	8	3.8%
THEFT BY UNLWFL TAKING OR DISP	7	3.3%
DRIVING UNDER REVOKED LICENSE	6	2.9%
TERRORISTIC THREATS	6	2.9%
THEFT BY SHOPLIFTING	6	2.9%
FORGERY 2ND DEGREE	5	2.4%
VIOL OF FINANCIAL TRANS DEVICE	4	1.9%
LEAVE SCENE OF INJURY ACCIDENT	3	1.4%
POS FIREARM BY FUGITIVE/FELON	3	1.4%
THEFT BY DECEPTION	3	1.4%
ASLT PEAC OFCR/DCS EMP 3RD DGR	2	1.0%
CRIMINAL NON-SUPPORT	2	1.0%
FORGERY 1ST DEGREE	2	1.0%
MURDER 2ND DEGREE	2	1.0%
VIOLATION OF PROTECTION ORDER	2	1.0%
ACCESSORY TO A FELONY	1	0.5%
ASSAULT 2ND DEGREE	1	0.5%
ASSAULT 3RD DEGREE	1	0.5%
ASLT OFFICER USING MOTOR VEH	1	0.5%
DOMESTIC ASSAULT	1	0.5%
ESCAPE	1	0.5%
FALSE REPORTING	1	0.5%
MANSLAUGHTER	1	0.5%
POS OF FRGD INST \$300 OR MORE	1	0.5%
POSS DEADLY WEAP BY FELON/FUG	1	0.5%
POSS OF ANHYDROUS AMMONIA	1	0.5%
RESISTING ARREST	1	0.5%
STRANGULATION	1	0.5%
TRANS/POSS MACHINE/SHORT GUN	1	0.5%
UNLAWFUL DISCHARGE OF FIREARM	1	0.5%
USE FIREARM TO COMMIT FELONY	1	0.5%
Grand Total	210	100.0%

Revocations Admissions - FY2010 Statistical Reports

Most Serious Offense Category

Offense Category	Number	Percent
Drugs	58	25.2%
Theft	41	17.8%
Burglary	34	14.8%
Assault	24	10.4%
Robbery	21	9.1%
Motor Vehicle	19	8.3%
Fraud	15	6.5%
Weapons	7	3.0%
Other	6	2.6%
Homicide	3	1.3%
Morals	2	0.9%
Grand Total	230	100.0%

Avg Min & Max Sentence

(Life set to 10-year average of 18.46 Yrs)

Avg MIN Sentence Mo's	Avg MAX Sentence Mo's	Number
58.77	122.77	230

County of Commitment

County	Number	Percent
ADAMS	3	1.3%
ANTELOPE	1	0.4%
BOX BUTTE	1	0.4%
BUFFALO	6	2.6%
BUTLER	1	0.4%
CASS	1	0.4%
CEDAR	1	0.4%
CHEYENNE	2	0.9%
COLFAX	1	0.4%
DAKOTA	3	1.3%
DAWES	2	0.9%
DAWSON	2	0.9%
DODGE	11	4.8%
DOUGLAS	76	33.0%
FILLMORE	1	0.4%
GAGE	2	0.9%
HALL	10	4.3%
HAMILTON	4	1.7%
HOLT	1	0.4%
LANCASTER	43	18.7%
LINCOLN	3	1.3%
MADISON	9	3.9%
MERRICK	1	0.4%
MORRILL	1	0.4%
PLATTE	7	3.0%
RED WILLOW	1	0.4%
RICHARDSON	1	0.4%
SALINE	2	0.9%
SARPY	14	6.1%
SAUNDERS	2	0.9%
SCOTTS BLUFF	7	3.0%
SEWARD	3	1.3%
SHERIDAN	2	0.9%
WASHINGTON	2	0.9%
WAYNE	1	0.4%
YORK	2	0.9%
Grand Total	230	100.0%

Revocations Admissions - FY2010 Statistical Reports

Minimum Sentence

Years	Number	Percent	Cumulative Number	Cumulative Percent
1 Yr or Less	17	7.4%	17	7.4%
1.01-2.00 Yrs	81	35.2%	98	42.6%
2.01-3.00 Yrs	34	14.8%	132	57.4%
3.01-4.00 Yrs	24	10.4%	156	67.8%
4.01-5.00 Yrs	21	9.1%	177	77.0%
5.01-6.00 Yrs	9	3.9%	186	80.9%
6.01-7.00 Yrs	5	2.2%	191	83.0%
7.01-8.00 Yrs	8	3.5%	199	86.5%
8.01-9.00 Yrs	3	1.3%	202	87.8%
9.01-10.00 Yrs	5	2.2%	207	90.0%
11.01-12.00 Yrs	3	1.3%	210	91.3%
13.01-14.00 Yrs	3	1.3%	213	92.6%
14.01-15.00 Yrs	3	1.3%	216	93.9%
15.01-16.00 Yrs	1	0.4%	217	94.3%
16.01-17.00 Yrs	5	2.2%	222	96.5%
18.01-19.00 Yrs	2	0.9%	224	97.4%
20+ Years	6	2.6%	230	100.0%

Maximum Sentence

Years	Number	Percent	Cumulative Number	Cumulative Percent
1 Yr or Less	3	1.3%	3	1.3%
1.01-2.00 Yrs	4	1.7%	7	3.0%
2.01-3.00 Yrs	28	12.2%	35	15.2%
3.01-4.00 Yrs	40	17.4%	75	32.6%
4.01-5.00 Yrs	39	17.0%	114	49.6%
5.01-6.00 Yrs	15	6.5%	129	56.1%
6.01-7.00 Yrs	11	4.8%	140	60.9%
7.01-8.00 Yrs	11	4.8%	151	65.7%
8.01-9.00 Yrs	7	3.0%	158	68.7%
9.01-10.00 Yrs	19	8.3%	177	77.0%
10.01-11.00 Yrs	3	1.3%	180	78.3%
11.01-12.00 Yrs	12	5.2%	192	83.5%
12.01-13.00 Yrs	1	0.4%	193	83.9%
13.01-14.00 Yrs	3	1.3%	196	85.2%
14.01-15.00 Yrs	3	1.3%	199	86.5%
15.01-16.00 Yrs	2	0.9%	201	87.4%
16.01-17.00 Yrs	1	0.4%	202	87.8%
17.01-18.00 Yrs	2	0.9%	204	88.7%
18.01-19.00 Yrs	1	0.4%	205	89.1%
19.01-20.00 Yrs	1	0.4%	206	89.6%
20+ Years	23	10.0%	229	99.6%
Life	1	0.4%	230	100.0%

Evaluator / Safekeeper Admissions - FY2010 Statistical Reports

Age at Admission

Age	Number	Percent	Cumulative Number	Cumulative Percent
16	1	0.6%	1	0.6%
17	5	2.8%	6	3.3%
18	5	2.8%	11	6.1%
19	10	5.5%	21	11.6%
20 - 24	40	22.1%	61	33.7%
25 - 29	38	21.0%	99	54.7%
30 - 34	27	14.9%	126	69.6%
35 - 39	15	8.3%	141	77.9%
40 - 44	10	5.5%	151	83.4%
45 - 49	14	7.7%	165	91.2%
50 - 54	10	5.5%	175	96.7%
55 - 59	2	1.1%	177	97.8%
60 and Over	4	2.2%	181	100.0%

Average Age at Admission

Age at Admission	# of Inmates
31.87	181

Gender

Gender	Number	Percent
Male	139	76.8%
Female	42	23.2%
Grand Total	181	100.0%

Race

Race	Number	Percent
White	139	76.8%
Hispanic	18	9.9%
Black	12	6.6%
Native American	10	5.5%
Asian	1	0.6%
Other	1	0.6%
Grand Total	181	100.0%

Status

Status	Number	Percent
County Safekeeper	124	68.5%
Evaluator	56	30.9%
Data Unavailable	1	0.6%
Grand Total	181	100.0%

Admissions By Month

Month/Year	# of Inmates	Percent
2009/07	17	9.4%
2009/08	16	8.8%
2009/09	12	6.6%
2009/10	16	8.8%
2009/11	14	7.7%
2009/12	8	4.4%
2010/01	13	7.2%
2010/02	13	7.2%
2010/03	22	12.2%
2010/04	18	9.9%
2010/05	14	7.7%
2010/06	18	9.9%
Grand Total	181	100.0%

Commitment Area

Region	Number	Percent
Metro Omaha	5	2.8%
Metro Lincoln	3	1.7%
Southeast	65	35.9%
Northeast	76	42.0%
South Central	17	9.4%
North Central	4	2.2%
Panhandle	9	5.0%
Data Unavailable	2	1.1%
Grand Total	181	100.0%

WEC Admissions - FY2010 Statistical Reports

Probationer Age at Admission

Age	Number	Percent	Cumulative Number	Cumulative Percent
16	3	1.6%	3	1.6%
17	8	4.2%	11	5.8%
18	28	14.8%	39	20.6%
19	36	19.0%	75	39.7%
20 - 24	86	45.5%	161	85.2%
25 - 29	15	7.9%	176	93.1%
30 - 34	6	3.2%	182	96.3%
35 - 39	3	1.6%	185	97.9%
40 - 44	2	1.1%	187	98.9%
45 - 49	1	0.5%	188	99.5%
50 - 54	1	0.5%	189	100.0%

Probationers Average Age at Admission

Age at Admission	# of Probationers
22.34	189

Probationer Gender

Gender	Number	Percent
Male	169	89.4%
Female	20	10.6%
Grand Total	189	100.0%

Probationer Race

Race	Number	Percent
White	135	71.4%
Black	28	14.8%
Hispanic	18	9.5%
American Indian	6	3.2%
Asian	1	0.5%
Other	1	0.5%
Grand Total	189	100.0%

Probationer Admissions By Month

Month/Year	# of Probationers	Percent
2009/07	16	8.5%
2009/08	15	7.9%
2009/09	17	9.0%
2009/10	10	5.3%
2009/11	22	11.6%
2009/12	8	4.2%
2010/01	12	6.3%
2010/02	17	9.0%
2010/03	20	10.6%
2010/04	13	6.9%
2010/05	16	8.5%
2010/06	23	12.2%
Grand Total	189	100.0%

Probationer Most Serious Offense Category

Offense Category	# of Probationers	Percent
Burglary	52	28.1%
Drugs	44	23.8%
Theft	33	17.8%
Assault	14	7.6%
Other	13	7.0%
Robbery	11	5.9%
Fraud	7	3.8%
Motor Vehicle	6	3.2%
Weapons	4	2.2%
Arson	1	0.5%
Grand Total	185	100.0%

Data Unavailable: 4

WEC Admissions - FY2010 Statistical Reports

Probationer County of Commitment

County	Number	Percent
ADAMS	8	4.3%
BUFFALO	10	5.4%
BUTLER	8	4.3%
CLAY	1	0.5%
COLFAX	1	0.5%
CUMING	1	0.5%
DAKOTA	2	1.1%
DAWSON	6	3.2%
DODGE	4	2.2%
DOUGLAS	17	9.2%
FRONTIER	1	0.5%
GAGE	8	4.3%
HALL	27	14.6%
HAMILTON	3	1.6%
JEFFERSON	3	1.6%
JOHNSON	1	0.5%
KNOX	1	0.5%
LANCASTER	16	8.6%
LINCOLN	4	2.2%
MADISON	5	2.7%
MERRICK	3	1.6%
MORRILL	3	1.6%
NANCE	2	1.1%
NEMAHA	2	1.1%
PAWNEE	2	1.1%
PHELPS	1	0.5%
PLATTE	3	1.6%
RED WILLOW	1	0.5%
RICHARDSON	5	2.7%
SARPY	4	2.2%
SAUNDERS	16	8.6%
SCOTTS BLUFF	7	3.8%
SEWARD	1	0.5%
SHERIDAN	1	0.5%
STANTON	1	0.5%
WASHINGTON	5	2.7%
YORK	1	0.5%
Grand Total	185	100.0%

Data Unavailable: 4

INMATE Admissions (not probationer)

of Inmates
272

Institutional Releases - FY2010 Statistical Reports

Age at Admission

Age	Number	Percent	Cumulative Number	Cumulative Percent
15	2	0.1%	2	0.1%
16	5	0.2%	7	0.3%
17	18	0.8%	25	1.1%
18	62	2.6%	87	3.7%
19	108	4.6%	195	8.3%
20 - 24	540	23.0%	735	31.3%
25 - 29	428	18.2%	1163	49.5%
30 - 34	323	13.7%	1486	63.2%
35 - 39	277	11.8%	1763	75.0%
40 - 44	223	9.5%	1986	84.5%
45 - 49	200	8.5%	2186	93.0%
50 - 54	98	4.2%	2284	97.2%
55 - 59	40	1.7%	2324	98.9%
60 and Over	26	1.1%	2350	100.0%

Average Age at Admission

Age at Admission	# of Inmates
32.53	2350

Race

Race	Number	Percent
White	1308	55.7%
Black	580	24.7%
Hispanic	333	14.2%
Native American	103	4.4%
Asian	13	0.6%
Other	12	0.5%
Hawaiian / Pacific Islander	1	0.0%
Grand Total	2350	100.0%

Release Type* (by gender)

(*this report counts twice inmates that paroled, revoked, and then discharged)

Release Type	Females	% of Females	Males	% of Males	Total	% of Total
Mandatory Discharge	119	44.9%	1161	54.9%	1280	53.8%
Parole	145	54.7%	938	44.3%	1083	45.5%
Deceased			9	0.4%	9	0.4%
Other			6	0.3%	6	0.3%
Escape			2	0.1%	2	0.1%
Transfer	1	0.4%			1	0.0%
Grand Total	265	100.0%	2116	100.0%	2381	100.0%

Admission Status

Status	Number	Percent
First - Time	1449	61.7%
Multiple	891	37.9%
Interstate Transfer	10	0.4%
Grand Total	2350	100.0%

Avg Min & Max Sentence

(Life set to 10-year average of 18.46 Yrs)

Avg MIN Sentence Mo's	Avg MAX Sentence Mo's	# of Inmates
36.81	67.79	2350

Average Length of Stay

Gender	Years	Months	Days	# of Inmates
Male	2.22	26.66	811	2088
Female	1.40	16.78	510	262
Grand Total	2.13	25.56	778	2350

Institutional Releases - FY2010 Statistical Reports

Length of Stay

Month/Year	Number	Percent	Cumulative Number	Cumulative Percent
0 - 6 Months	495	21.1%	495	21.1%
7 - 12 Months	496	21.1%	991	42.2%
13 - 18 Months	361	15.4%	1352	57.5%
19 - 24 Months	292	12.4%	1644	70.0%
25 - 30 Months	87	3.7%	1731	73.7%
31 - 36 Months	214	9.1%	1945	82.8%
37 - 42 Months	57	2.4%	2002	85.2%
43 - 48 Months	58	2.5%	2060	87.7%
49 - 54 Months	48	2.0%	2108	89.7%
55 - 60 Months	48	2.0%	2156	91.7%
5.01 - 6.00 Yrs	47	2.0%	2203	93.7%
6.01 - 7.00 Yrs	28	1.2%	2231	94.9%
7.01 - 8.00 Yrs	28	1.2%	2259	96.1%
8.01 - 9.00 Yrs	16	0.7%	2275	96.8%
9.01 - 10.00 Yrs	18	0.8%	2293	97.6%
10.01 - 11.00 Yrs	10	0.4%	2303	98.0%
11.01 - 12.00 Yrs	6	0.3%	2309	98.3%
12.01 - 13.00 Yrs	9	0.4%	2318	98.6%
13.01 - 14.00 Yrs	1	0.0%	2319	98.7%
14.01 - 15.00 Yrs	3	0.1%	2322	98.8%
15.01 - 16.00 Yrs	1	0.0%	2323	98.9%
16.01 - 17.00 Yrs	3	0.1%	2326	99.0%
17.01 - 18.00 Yrs	8	0.3%	2334	99.3%
18.01 - 19.00 Yrs	3	0.1%	2337	99.4%
19.01 - 20.00 Yrs	1	0.0%	2338	99.5%
Over 20 Years	12	0.5%	2350	100.0%

Most Serious Offense Category

Offense Category	# of Inmates	Percent
Drugs	534	22.7%
Assault	332	14.1%
Motor Vehicle	310	13.2%
Theft	299	12.7%
Burglary	206	8.8%
Sex Offenses	179	7.6%
Fraud	139	5.9%
Robbery	137	5.8%
Other	83	3.5%
Weapons	50	2.1%
Homicide	28	1.2%
Morals	26	1.1%
Restraint	16	0.7%
Arson	8	0.3%
Data Unavailable	1	0.0%
Grand Total	2348	100.0%

Data Unavailable: 2

Institutional Releases - FY2010 Statistical Reports

Minimum Sentence

Years	Number	Percent	Cumulative Number	Cumulative Percent
1.00 Yr or Less	629	26.8%	629	26.8%
1.01-2.00 Yrs	800	34.0%	1429	60.8%
2.01-3.00 Yrs	295	12.6%	1724	73.4%
3.01-4.00 Yrs	214	9.1%	1938	82.5%
4.01-5.00 Yrs	121	5.1%	2059	87.6%
5.01-6.00 Yrs	55	2.3%	2114	90.0%
6.01-7.00 Yrs	27	1.1%	2141	91.1%
7.01-8.00 Yrs	44	1.9%	2185	93.0%
8.01-9.00 Yrs	20	0.9%	2205	93.8%
9.01-10.00 Yrs	44	1.9%	2249	95.7%
10.01-11.00 Yrs	9	0.4%	2258	96.1%
11.01-12.00 Yrs	26	1.1%	2284	97.2%
12.01-13.00 Yrs	6	0.3%	2290	97.4%
13.01-14.00 Yrs	6	0.3%	2296	97.7%
14.01-15.00 Yrs	13	0.6%	2309	98.3%
15.01-16.00 Yrs	6	0.3%	2315	98.5%
16.01-17.00 Yrs	4	0.2%	2319	98.7%
17.01-18.00 Yrs	3	0.1%	2322	98.8%
19.01-20.00 Yrs	11	0.5%	2333	99.3%
Over 20 Years	15	0.6%	2348	99.9%
Life	2	0.1%	2350	100.0%

Maximum Sentence

Years	Number	Percent	Cumulative Number	Cumulative Percent
1.00 Yr or Less	301	12.8%	301	12.8%
1.01-2.00 Yrs	330	14.0%	631	26.9%
2.01-3.00 Yrs	388	16.5%	1019	43.4%
3.01-4.00 Yrs	311	13.2%	1330	56.6%
4.01-5.00 Yrs	354	15.1%	1684	71.7%
5.01-6.00 Yrs	129	5.5%	1813	77.1%
6.01-7.00 Yrs	58	2.5%	1871	79.6%
7.01-8.00 Yrs	96	4.1%	1967	83.7%
8.01-9.00 Yrs	30	1.3%	1997	85.0%
9.01-10.00 Yrs	105	4.5%	2102	89.4%
10.01-11.00 Yrs	19	0.8%	2121	90.3%
11.01-12.00 Yrs	29	1.2%	2150	91.5%
12.01-13.00 Yrs	15	0.6%	2165	92.1%
13.01-14.00 Yrs	11	0.5%	2176	92.6%
14.01-15.00 Yrs	26	1.1%	2202	93.7%
15.01-16.00 Yrs	15	0.6%	2217	94.3%
16.01-17.00 Yrs	9	0.4%	2226	94.7%
17.01-18.00 Yrs	12	0.5%	2238	95.2%
18.01-19.00 Yrs	7	0.3%	2245	95.5%
19.01-20.00 Yrs	33	1.4%	2278	96.9%
Over 20 Years	66	2.8%	2344	99.7%
Life	6	0.3%	2350	100.0%

Evaluator / Safekeeper Releases - FY2010 Statistical Reports

Age at Admission

Age	Number	Percent	Cumulative Number	Cumulative Percent
16	1	0.6%	1	0.6%
17	4	2.2%	5	2.8%
18	6	3.3%	11	6.1%
19	9	5.0%	20	11.0%
20 - 24	38	21.0%	58	32.0%
25 - 29	41	22.7%	99	54.7%
30 - 34	27	14.9%	126	69.6%
35 - 39	19	10.5%	145	80.1%
40 - 44	10	5.5%	155	85.6%
45 - 49	13	7.2%	168	92.8%
50 - 54	9	5.0%	177	97.8%
55 - 59	2	1.1%	179	98.9%
60 and Over	2	1.1%	181	100.0%

Average Age at Admission

Age at Admission	# of Inmates
31.48	181

Age at Release

Age	Number	Percent	Cumulative Number	Cumulative Percent
16	1	0.6%	1	0.6%
17	2	1.1%	3	1.7%
18	7	3.9%	10	5.5%
19	10	5.5%	20	11.0%
20 - 24	37	20.4%	57	31.5%
25 - 29	41	22.7%	98	54.1%
30 - 34	26	14.4%	124	68.5%
35 - 39	20	11.0%	144	79.6%
40 - 44	11	6.1%	155	85.6%
45 - 49	12	6.6%	167	92.3%
50 - 54	10	5.5%	177	97.8%
55 - 59	2	1.1%	179	98.9%
60 and Over	2	1.1%	181	100.0%

Average Age at Release

Age at Release	# of Inmates
31.65	181

Average Length of Stay

Years	Months	Days	# of Inmates
0.17	2.04	62	181

Institutional Release Date

Year/Month	Number	Percent
2009/07	15	8.3%
2009/08	16	8.8%
2009/09	15	8.3%
2009/10	22	12.2%
2009/11	6	3.3%
2009/12	10	5.5%
2010/01	14	7.7%
2010/02	10	5.5%
2010/03	12	6.6%
2010/04	14	7.7%
2010/05	22	12.2%
2010/06	25	13.8%
Grand Total	181	100.0%

Institutional Release Type

Type	Number	Percent
MANDATORY DISCHARGE	150	82.9%
EXPIRATION OF SENTENCE	21	11.6%
OTHER	8	4.4%
DISCHARGE - INS	1	0.6%
TRANSFER	1	0.6%
Grand Total	181	100.0%

Race

Race	Number	Percent
White	143	79.0%
Hispanic	14	7.7%
Black	13	7.2%
Native American	10	5.5%
Asian	1	0.6%
Grand Total	181	100.0%

Gender

Gender	Number	Percent
Male	141	77.9%
Female	40	22.1%
Grand Total	181	100.0%

Status

Status	Number	Percent
County Safekeeper	119	65.7%
Evaluator	62	34.3%
Grand Total	181	100.0%

Evaluator / Safekeeper Releases - FY2010 Statistical Reports

Commitment Area

Region	Number	Percent
Metro Omaha	5	2.8%
Metro Lincoln	3	1.7%
Southeast	74	40.9%
Northeast	70	38.7%
South Central	12	6.6%
North Central	4	2.2%
Panhandle	12	6.6%
Data Unavailable	1	0.6%
Grand Total	181	100.0%

Length of Stay in Institution

Months	Number	Percent	Cumulative Number	Cumulative Percent
0 - 1 Month	71	39.2%	71	39.2%
2 Months	22	12.2%	93	51.4%
3 Months	52	28.7%	145	80.1%
4 Months	18	9.9%	163	90.1%
5 Months	7	3.9%	170	93.9%
6 Months	2	1.1%	172	95.0%
7 - 12 Months	8	4.4%	180	99.4%
13 - 18 Months	1	0.6%	181	100.0%

WEC Releases - FY2010 Statistical Reports

Probationer Age at Admission

Age	Number	Percent	Cumulative Number	Cumulative Percent
16	1	0.6%	1	0.6%
17	8	4.6%	9	5.1%
18	29	16.6%	38	21.7%
19	37	21.1%	75	42.9%
20 - 24	69	39.4%	144	82.3%
25 - 29	18	10.3%	162	92.6%
30 - 34	3	1.7%	165	94.3%
35 - 39	5	2.9%	170	97.1%
40 - 44	2	1.1%	172	98.3%
45 - 49	1	0.6%	173	98.9%
50 - 54	2	1.1%	175	100.0%

Probationer Average Age at Admission

Age at Admission	# of Probationers
22.54	175

Probationer Age at Release

Age	Number	Percent	Cumulative Number	Cumulative Percent
17	6	3.4%	6	3.4%
18	14	8.0%	20	11.4%
19	40	22.9%	60	34.3%
20 - 24	81	46.3%	141	80.6%
25 - 29	19	10.9%	160	91.4%
30 - 34	4	2.3%	164	93.7%
35 - 39	5	2.9%	169	96.6%
40 - 44	1	0.6%	170	97.1%
45 - 49	2	1.1%	172	98.3%
50 - 54	1	0.6%	173	98.9%
55 - 59	1	0.6%	174	99.4%
Data Unavailable	1	0.6%	175	100.0%

Probationer Average Age at Release

Age at Admission	# of Probationers
22.91	175

Probationer Average Length of Stay

Years	Months	Days	# of Probationers
0.37	4.46	135	175

Probationer Release Date

Year/Month	Number	Percent
2009/07	14	8.0%
2009/08	20	11.4%
2009/09	19	10.9%
2009/10	9	5.1%
2009/11	8	4.6%
2009/12	21	12.0%
2010/01	12	6.9%
2010/02	15	8.6%
2010/03	10	5.7%
2010/04	22	12.6%
2010/05	14	8.0%
2010/06	11	6.3%
Grand Total	175	100.0%

Probationer Release Type

Type	Number	Percent
WEC RLSE-SUCCESSFUL	103	58.9%
WEC RLSE-REMOVE-PROGRM FAILURE	33	18.9%
WEC RLSE-GUARDED	24	13.7%
WEC RLSE-ABSCOND	6	3.4%
WEC RLSE-MEDICAL/MENTL HEALTH	3	1.7%
WEC RLSE-REVOKE-LAW VIOLATION	3	1.7%
WEC RLSE-OTHER	2	1.1%
WEC RLSE-REMOVAL VOLUNTARY	1	0.6%
Grand Total	175	100.0%

Probationer Race

Race	Number	Percent
White	118	67.4%
Black	28	16.0%
Hispanic	19	10.9%
Native American	8	4.6%
Asian	2	1.1%
Grand Total	175	100.0%

Probationer Gender

Gender	Number	Percent
Male	154	88.0%
Female	21	12.0%
Grand Total	175	100.0%

WEC Releases - FY2010 Statistical Reports

Probationer County of Commitment

County	Number	Percent
ADAMS	10	5.7%
BUFFALO	5	2.9%
BUTLER	8	4.6%
CHEYENNE	1	0.6%
COLFAX	1	0.6%
CUMING	2	1.1%
CUSTER	1	0.6%
DAKOTA	2	1.1%
DAWSON	4	2.3%
DODGE	3	1.7%
DOUGLAS	24	13.7%
FRONTIER	1	0.6%
GAGE	9	5.1%
HALL	27	15.4%
HAMILTON	2	1.1%
HOLT	1	0.6%
JEFFERSON	3	1.7%
JOHNSON	1	0.6%
KNOX	1	0.6%
LANCASTER	15	8.6%
LINCOLN	3	1.7%
MADISON	2	1.1%
MERRICK	2	1.1%
MORRILL	2	1.1%
NANCE	1	0.6%
NEMAHA	4	2.3%
OTOE	1	0.6%
PAWNEE	3	1.7%
PHELPS	1	0.6%
PIERCE	1	0.6%
PLATTE	4	2.3%
RED WILLOW	1	0.6%
RICHARDSON	1	0.6%
SARPY	4	2.3%
SAUNDERS	11	6.3%
SCOTTS BLUFF	9	5.1%
STANTON	1	0.6%
THURSTON	1	0.6%
WASHINGTON	3	1.7%
YORK	1	0.6%
Grand Total	175	100.0%

Probationer Length of Stay in Institution

Months	Number	Percent	Cumulative Number	Cumulative Percent
0 - 1 Month	10	5.7%	10	5.7%
2 Months	8	4.6%	18	10.3%
3 Months	10	5.7%	28	16.0%
4 Months	7	4.0%	35	20.0%
5 Months	100	57.1%	135	77.1%
6 Months	37	21.1%	172	98.3%
7 - 12 Months	3	1.7%	175	100.0%

INMATE Releases (not probationer)

of Inmates
93

Community Corrections Admissions - FY2010 Statistical Reports

Age at Admission to Prison

Age at Admission	# of Inmates	Percent
16	1	0.1%
17	9	0.9%
18	12	1.2%
19	36	3.6%
20 - 24	184	18.6%
25 - 29	162	16.3%
30 - 34	150	15.1%
35 - 39	136	13.7%
40 - 44	112	11.3%
45 - 49	107	10.8%
50 - 54	51	5.1%
55 - 59	16	1.6%
60 and Over	15	1.5%
Grand Total	991	100.0%

Average Age at Admission to Prison

Age at Admission	# of Inmates
34.36	991

Gender

Gender	Number	Percent
Female	135	13.6%
Male	856	86.4%
Grand Total	991	100.0%

Race

Race	Number	Percent
WHITE	604	60.9%
BLACK	272	27.4%
HISPANIC	69	7.0%
NATIVE AMERICAN	34	3.4%
OTHER	6	0.6%
ASIAN	6	0.6%
Grand Total	991	100.0%

Status

Status	Number	Percent
First - Time	582	58.7%
Multiple	409	41.3%
Grand Total	991	100.0%

Most Serious Offense Category

Offense Arrest Code	# of Inmates	Percent
Drugs	249	25.1%
Motor Vehicle	174	17.6%
Theft	131	13.2%
Burglary	105	10.6%
Assault	103	10.4%
Robbery	66	6.7%
Fraud	61	6.2%
Other	26	2.6%
Homicide	21	2.1%
Sex Offenses	18	1.8%
Weapons	17	1.7%
Morals	9	0.9%
Arson	7	0.7%
Restraint	4	0.4%
Grand Total	991	100.0%

Data Unavailable: 1

Community Corrections Admissions - FY2010 Statistical Reports

Minimum Sentence

Years	Number	Percent	Cumulative Number	Cumulative Percent
1 Yr or Less	150	15.1%	150	15.1%
1.01-2.00 Yrs	312	31.5%	462	46.6%
2.01-3.00 Yrs	138	13.9%	600	60.5%
3.01-4.00 Yrs	128	12.9%	728	73.5%
4.01-5.00 Yrs	61	6.2%	789	79.6%
5.01-6.00 Yrs	34	3.4%	823	83.0%
6.01-7.00 Yrs	29	2.9%	852	86.0%
7.01-8.00 Yrs	31	3.1%	883	89.1%
8.01-9.00 Yrs	14	1.4%	897	90.5%
9.01-10.00 Yrs	31	3.1%	928	93.6%
10.01-11.00 Yrs	5	0.5%	933	94.1%
11.01-12.00 Yrs	15	1.5%	948	95.7%
12.01-13.00 Yrs	4	0.4%	952	96.1%
13.01-14.00 Yrs	6	0.6%	958	96.7%
14.01-15.00 Yrs	6	0.6%	964	97.3%
15.01-16.00 Yrs	3	0.3%	967	97.6%
16.01-17.00 Yrs	3	0.3%	970	97.9%
17.01-18.00 Yrs	3	0.3%	973	98.2%
19.01-20.00 Yrs	9	0.9%	982	99.1%
20+ Years	9	0.9%	991	100.0%

Maximum Sentence

Years	Number	Percent	Cumulative Number	Cumulative Percent
1 Yr or Less	47	4.7%	47	4.7%
1.01-2.00 Yrs	98	9.9%	145	14.6%
2.01-3.00 Yrs	148	14.9%	293	29.6%
3.01-4.00 Yrs	127	12.8%	420	42.4%
4.01-5.00 Yrs	149	15.0%	569	57.4%
5.01-6.00 Yrs	77	7.8%	646	65.2%
6.01-7.00 Yrs	27	2.7%	673	67.9%
7.01-8.00 Yrs	61	6.2%	734	74.1%
8.01-9.00 Yrs	21	2.1%	755	76.2%
9.01-10.00 Yrs	63	6.4%	818	82.5%
10.01-11.00 Yrs	13	1.3%	831	83.9%
11.01-12.00 Yrs	25	2.5%	856	86.4%
12.01-13.00 Yrs	11	1.1%	867	87.5%
13.01-14.00 Yrs	13	1.3%	880	88.8%
14.01-15.00 Yrs	22	2.2%	902	91.0%
15.01-16.00 Yrs	9	0.9%	911	91.9%
16.01-17.00 Yrs	6	0.6%	917	92.5%
17.01-18.00 Yrs	6	0.6%	923	93.1%
18.01-19.00 Yrs	8	0.8%	931	93.9%
19.01-20.00 Yrs	12	1.2%	943	95.2%
20+ Years	47	4.7%	990	99.9%
Life	1	0.1%	991	100.0%

Parole Admissions - FY2010 Statistical Reports

Age at Release to Parole

Age	Number	Percent	Cumulative Number	Cumulative Percent
17	2	0.2%	2	0.2%
18	1	0.1%	3	0.3%
19	15	1.4%	18	1.7%
20 - 24	215	19.9%	233	21.5%
25 - 29	219	20.2%	452	41.7%
30 - 34	163	15.1%	615	56.8%
35 - 39	135	12.5%	750	69.3%
40 - 44	95	8.8%	845	78.0%
45 - 49	107	9.9%	952	87.9%
50 - 54	62	5.7%	1014	93.6%
55 - 59	18	1.7%	1032	95.3%
60 and Over	16	1.5%	1048	96.8%
Data Unavailable	35	3.2%	1083	100.0%

Average Age at Admission to Prison

Age at Admission	# of Inmates
32.39	1083

Avg Age at Release to Parole

Age at Release	Number
34.42	1083

Gender

Gender	Number	Percent
Male	938	86.6%
Female	145	13.4%
Grand Total	1083	100.0%

Race

Race	Number	Percent
White	623	57.5%
Black	257	23.7%
Hispanic	156	14.4%
Native American	35	3.2%
Other	6	0.6%
Asian	5	0.5%
Hawaiian / Pacific Islander	1	0.1%
Grand Total	1083	100.0%

Avg Min & Max Sentence

(Life set to 10-year average of 18.46 Yrs)

Avg MIN Sentence Mo's	Avg MAX Sentence Mo's	# of Inmates
41.72	80.30	1083

Status

Status	Number	Percent
First - Time	705	65.1%
Multiple	378	34.9%
Grand Total	1083	100.0%

Most Serious Offense Category

Offense Category	# of Inmates	Percent
Drugs	320	29.6%
Motor Vehicle	157	14.5%
Theft	143	13.2%
Assault	114	10.5%
Burglary	107	9.9%
Robbery	85	7.9%
Fraud	60	5.5%
Sex Offenses	29	2.7%
Other	28	2.6%
Weapons	16	1.5%
Homicide	12	1.1%
Restraint	5	0.5%
Morals	4	0.4%
Arson	2	0.2%
Grand Total	1082	100.0%

Data Unavailable: 1

Parole Admissions - FY2010 Statistical Reports

Length of Stay in Institution

Month/Year	Number	Percent	Cumulative Number	Cumulative Percent
0 - 6 Months	67	6.2%	67	6.2%
7 - 12 Months	328	30.3%	395	36.5%
13 - 18 Months	215	19.9%	610	56.3%
19 - 24 Months	146	13.5%	756	69.8%
25 - 30 Months	36	3.3%	792	73.1%
31 - 36 Months	101	9.3%	893	82.5%
37 - 42 Months	33	3.0%	926	85.5%
43 - 48 Months	27	2.5%	953	88.0%
49 - 54 Months	26	2.4%	979	90.4%
55 - 60 Months	21	1.9%	1000	92.3%
5.01 - 6.00 Yrs	20	1.8%	1020	94.2%
6.01 - 7.00 Yrs	16	1.5%	1036	95.7%
7.01 - 8.00 Yrs	16	1.5%	1052	97.1%
8.01 - 9.00 Yrs	7	0.6%	1059	97.8%
9.01 - 10.00 Yrs	5	0.5%	1064	98.2%
10.01 - 11.00 Yrs	5	0.5%	1069	98.7%
12.01 - 13.00 Yrs	2	0.2%	1071	98.9%
14.01 - 15.00 Yrs	1	0.1%	1072	99.0%
15.01 - 16.00 Yrs	1	0.1%	1073	99.1%
16.01 - 17.00 Yrs	1	0.1%	1074	99.2%
17.01 - 18.00 Yrs	5	0.5%	1079	99.6%
18.01 - 19.00 Yrs	2	0.2%	1081	99.8%
Over 20 Years	2	0.2%	1083	100.0%

Region Paroled To

Region	Number	Percent
IMMIGRATION	72	6.6%
US MARSHAL/ATTORNEY	16	1.5%
Metro Omaha	358	33.1%
Metro Lincoln	247	22.8%
Southeast	56	5.2%
Northeast	103	9.5%
South Central	77	7.1%
North Central	10	0.9%
Panhandle	36	3.3%
Out of State	77	7.1%
Data Unavailable	31	2.9%
Grand Total	1083	100.0%

Parole Admissions - FY2010 Statistical Reports

Minimum Sentence

Years	Number	Percent	Cumulative Number	Cumulative Percent
1.00 Yr or Less	137	12.7%	137	12.7%
1.01-2.00 Yrs	433	40.0%	570	52.6%
2.01-3.00 Yrs	168	15.5%	738	68.1%
3.01-4.00 Yrs	124	11.4%	862	79.6%
4.01-5.00 Yrs	57	5.3%	919	84.9%
5.01-6.00 Yrs	35	3.2%	954	88.1%
6.01-7.00 Yrs	15	1.4%	969	89.5%
7.01-8.00 Yrs	23	2.1%	992	91.6%
8.01-9.00 Yrs	12	1.1%	1004	92.7%
9.01-10.00 Yrs	23	2.1%	1027	94.8%
10.01-11.00 Yrs	7	0.6%	1034	95.5%
11.01-12.00 Yrs	17	1.6%	1051	97.0%
12.01-13.00 Yrs	6	0.6%	1057	97.6%
13.01-14.00 Yrs	2	0.2%	1059	97.8%
14.01-15.00 Yrs	8	0.7%	1067	98.5%
15.01-16.00 Yrs	3	0.3%	1070	98.8%
16.01-17.00 Yrs	3	0.3%	1073	99.1%
17.01-18.00 Yrs	1	0.1%	1074	99.2%
19.01-20.00 Yrs	1	0.1%	1075	99.3%
Over 20 Years	8	0.7%	1083	100.0%

Maximum Sentence

Years	Number	Percent	Cumulative Number	Cumulative Percent
1.00 Yr or Less	1	0.1%	1	0.1%
1.01-2.00 Yrs	89	8.2%	90	8.3%
2.01-3.00 Yrs	221	20.4%	311	28.7%
3.01-4.00 Yrs	182	16.8%	493	45.5%
4.01-5.00 Yrs	192	17.7%	685	63.3%
5.01-6.00 Yrs	71	6.6%	756	69.8%
6.01-7.00 Yrs	40	3.7%	796	73.5%
7.01-8.00 Yrs	65	6.0%	861	79.5%
8.01-9.00 Yrs	18	1.7%	879	81.2%
9.01-10.00 Yrs	64	5.9%	943	87.1%
10.01-11.00 Yrs	9	0.8%	952	87.9%
11.01-12.00 Yrs	16	1.5%	968	89.4%
12.01-13.00 Yrs	7	0.6%	975	90.0%
13.01-14.00 Yrs	9	0.8%	984	90.9%
14.01-15.00 Yrs	17	1.6%	1001	92.4%
15.01-16.00 Yrs	9	0.8%	1010	93.3%
16.01-17.00 Yrs	7	0.6%	1017	93.9%
17.01-18.00 Yrs	8	0.7%	1025	94.6%
18.01-19.00 Yrs	7	0.6%	1032	95.3%
19.01-20.00 Yrs	17	1.6%	1049	96.9%
Over 20 Years	33	3.0%	1082	99.9%
Life	1	0.1%	1083	100.0%

Parole Discharges - FY2010 Statistical Reports

Age at Parole Admission

Age	Number	Percent	Cumulative Number	Cumulative Percent
17	1	0.1%	1	0.1%
18	1	0.1%	2	0.3%
19	10	1.3%	12	1.5%
20 - 24	148	18.5%	160	20.1%
25 - 29	142	17.8%	302	37.8%
30 - 34	135	16.9%	437	54.8%
35 - 39	104	13.0%	541	67.8%
40 - 44	106	13.3%	647	81.1%
45 - 49	89	11.2%	736	92.2%
50 - 54	37	4.6%	773	96.9%
55 - 59	16	2.0%	789	98.9%
60 and Over	9	1.1%	798	100.0%

Avg Age at Parole Admission

Age at Parole	Number
35.04	798

Age at Release from Parole

Age	Number	Percent	Cumulative Number	Cumulative Percent
17	1	0.1%	1	0.1%
18	1	0.1%	2	0.3%
20 - 24	132	16.5%	134	16.8%
25 - 29	149	18.7%	283	35.5%
30 - 34	142	17.8%	425	53.3%
35 - 39	92	11.5%	517	64.8%
40 - 44	107	13.4%	624	78.2%
45 - 49	102	12.8%	726	91.0%
50 - 54	45	5.6%	771	96.6%
55 - 59	17	2.1%	788	98.7%
60 and Over	10	1.3%	798	100.0%
Grand Total	798	100.0%	798	100.0%

Avg Age at Release from Parole

Age at Release	Number
35.87	798

Race

Race	Number	Percent
White	492	61.7%
Black	166	20.8%
Hispanic	99	12.4%
Native American	31	3.9%
Asian	7	0.9%
Other	3	0.4%
Grand Total	798	100.0%

Status

Status	Number	Percent
First - Time	525	65.8%
Multiple	273	34.2%
Grand Total	798	100.0%

Gender

Gender	Number	Percent
Male	689	86.3%
Female	109	13.7%
Grand Total	798	100.0%

Parole Discharge Date

Date	Number	Percent
2009/07	63	7.9%
2009/08	73	9.1%
2009/09	50	6.3%
2009/10	78	9.8%
2009/11	56	7.0%
2009/12	63	7.9%
2010/01	66	8.3%
2010/02	59	7.4%
2010/03	74	9.3%
2010/04	70	8.8%
2010/05	77	9.6%
2010/06	69	8.6%
Grand Total	798	100.0%

Avg Min & Max Sentence

(Life set to 10-year average of 18.46 Yrs)

Avg MIN Sentence Mo's	Avg MAX Sentence Mo's	# of Inmates
37.60	72.43	798

Parole Discharges - FY2010 Statistical Reports

Average Length of Stay on Parole

Years on Parole	Months on Parole	Days on Parole	# of Inmates
0.82	9.83	298	798

Length of Stay in Institution

Month/Year	Number	Percent	Cumulative Number	Cumulative Percent
0 - 6 Months	58	7.3%	58	7.3%
7 - 12 Months	267	33.5%	325	40.7%
13 - 18 Months	160	20.1%	485	60.8%
19 - 24 Months	105	13.2%	590	73.9%
25 - 30 Months	25	3.1%	615	77.1%
31 - 36 Months	65	8.1%	680	85.2%
37 - 42 Months	26	3.3%	706	88.5%
43 - 48 Months	17	2.1%	723	90.6%
49 - 54 Months	12	1.5%	735	92.1%
55 - 60 Months	13	1.6%	748	93.7%
5.01 - 6.00 Yrs	12	1.5%	760	95.2%
6.01 - 7.00 Yrs	8	1.0%	768	96.2%
7.01 - 8.00 Yrs	7	0.9%	775	97.1%
8.01 - 9.00 Yrs	6	0.8%	781	97.9%
9.01 - 10.00 Yrs	3	0.4%	784	98.2%
10.01 - 11.00 Yrs	2	0.3%	786	98.5%
11.01 - 12.00 Yrs	4	0.5%	790	99.0%
12.01 - 13.00 Yrs	1	0.1%	791	99.1%
13.01 - 14.00 Yrs	2	0.3%	793	99.4%
15.01 - 16.00 Yrs	1	0.1%	794	99.5%
18.01 - 19.00 Yrs	1	0.1%	795	99.6%
19.01 - 20.00 Yrs	1	0.1%	796	99.7%
Over 20 Years	2	0.3%	798	100.0%

Avg Total Length of Stay in Institution and Parole

Years	Months	Days	Number
2.76	33.13	1008	798

Length of Stay on Parole

Month/Year	Number	Percent	Cumulative Number	Cumulative Percent
0 - 6 Months	363	45.5%	363	45.5%
7 - 12 Months	246	30.8%	609	76.3%
13 - 18 Months	86	10.8%	695	87.1%
19 - 24 Months	47	5.9%	742	93.0%
25 - 30 Months	10	1.3%	752	94.2%
31 - 36 Months	28	3.5%	780	97.7%
37 - 42 Months	6	0.8%	786	98.5%
43 - 48 Months	3	0.4%	789	98.9%
49 - 54 Months	3	0.4%	792	99.2%
55 - 60 Months	3	0.4%	795	99.6%
5.01 - 6.00 Yrs	2	0.3%	797	99.9%
6.01 - 7.00 Yrs	1	0.1%	798	100.0%

Parole Discharges - FY2010 Statistical Reports

Total Length of Stay in Institution and Parole

Month/Year	Number	Percent	Cumulative Number	Cumulative Percent
0 - 6 Months	1	0.1%	1	0.1%
7 - 12 Months	118	14.8%	119	14.9%
13 - 18 Months	168	21.1%	287	36.0%
19 - 24 Months	160	20.1%	447	56.0%
25 - 30 Months	30	3.8%	477	59.8%
31 - 36 Months	115	14.4%	592	74.2%
37 - 42 Months	36	4.5%	628	78.7%
43 - 48 Months	30	3.8%	658	82.5%
49 - 54 Months	22	2.8%	680	85.2%
55 - 60 Months	32	4.0%	712	89.2%
5.01 - 6.00 Yrs	22	2.8%	734	92.0%
6.01 - 7.00 Yrs	19	2.4%	753	94.4%
7.01 - 8.00 Yrs	15	1.9%	768	96.2%
8.01 - 9.00 Yrs	4	0.5%	772	96.7%
9.01 - 10.00 Yrs	9	1.1%	781	97.9%
10.01 - 11.00 Yrs	2	0.3%	783	98.1%
11.01 - 12.00 Yrs	2	0.3%	785	98.4%
13.01 - 14.00 Yrs	3	0.4%	788	98.7%
14.01 - 15.00 Yrs	3	0.4%	791	99.1%
16.01 - 17.00 Yrs	2	0.3%	793	99.4%
17.01 - 18.00 Yrs	1	0.1%	794	99.5%
Over 20 Years	4	0.5%	798	100.0%

Most Serious Offense Category

Offense Category	# of Inmates	Percent
Drugs	237	29.7%
Theft	118	14.8%
Motor Vehicle	109	13.7%
Assault	95	11.9%
Burglary	67	8.4%
Robbery	47	5.9%
Fraud	37	4.6%
Sex Offenses	28	3.5%
Other	21	2.6%
Homicide	10	1.3%
Weapons	10	1.3%
Restraint	8	1.0%
Morals	7	0.9%
Arson	3	0.4%
Grand Total	797	100.0%

Data Unavailable: 1

Region Discharged To

Region	Number	Percent
IMMIGRATION	49	6.1%
US MARSHAL/ATTORNEY	16	2.0%
Metro Omaha	250	31.3%
Metro Lincoln	168	21.1%
Southeast	47	5.9%
Northeast	76	9.5%
South Central	66	8.3%
North Central	10	1.3%
Panhandle	18	2.3%
Out of State	93	11.7%
Data Unavailable	5	0.6%
Grand Total	798	100.0%

Parole Discharges - FY2010 Statistical Reports

Minimum Sentence

Years	Number	Percent	Cumulative Number	Cumulative Percent
1.00 Yr or Less	117	14.7%	117	14.7%
1.01-2.00 Yrs	343	43.0%	460	57.6%
2.01-3.00 Yrs	114	14.3%	574	71.9%
3.01-4.00 Yrs	77	9.6%	651	81.6%
4.01-5.00 Yrs	46	5.8%	697	87.3%
5.01-6.00 Yrs	28	3.5%	725	90.9%
6.01-7.00 Yrs	11	1.4%	736	92.2%
7.01-8.00 Yrs	19	2.4%	755	94.6%
8.01-9.00 Yrs	6	0.8%	761	95.4%
9.01-10.00 Yrs	13	1.6%	774	97.0%
10.01-11.00 Yrs	3	0.4%	777	97.4%
11.01-12.00 Yrs	3	0.4%	780	97.7%
13.01-14.00 Yrs	5	0.6%	785	98.4%
14.01-15.00 Yrs	3	0.4%	788	98.7%
16.01-17.00 Yrs	2	0.3%	790	99.0%
17.01-18.00 Yrs	2	0.3%	792	99.2%
19.01-20.00 Yrs	2	0.3%	794	99.5%
Over 20 Years	4	0.5%	798	100.0%

Maximum Sentence

Years	Number	Percent	Cumulative Number	Cumulative Percent
1.00 Yr or Less	1	0.1%	1	0.1%
1.01-2.00 Yrs	81	10.2%	82	10.3%
2.01-3.00 Yrs	179	22.4%	261	32.7%
3.01-4.00 Yrs	146	18.3%	407	51.0%
4.01-5.00 Yrs	120	15.0%	527	66.0%
5.01-6.00 Yrs	57	7.1%	584	73.2%
6.01-7.00 Yrs	27	3.4%	611	76.6%
7.01-8.00 Yrs	40	5.0%	651	81.6%
8.01-9.00 Yrs	15	1.9%	666	83.5%
9.01-10.00 Yrs	42	5.3%	708	88.7%
10.01-11.00 Yrs	9	1.1%	717	89.8%
11.01-12.00 Yrs	19	2.4%	736	92.2%
12.01-13.00 Yrs	2	0.3%	738	92.5%
13.01-14.00 Yrs	6	0.8%	744	93.2%
14.01-15.00 Yrs	14	1.8%	758	95.0%
15.01-16.00 Yrs	7	0.9%	765	95.9%
16.01-17.00 Yrs	3	0.4%	768	96.2%
17.01-18.00 Yrs	6	0.8%	774	97.0%
19.01-20.00 Yrs	7	0.9%	781	97.9%
Over 20 Years	16	2.0%	797	99.9%
Life	1	0.1%	798	100.0%

Parole Revocations - FY2010 Statistical Reports

Age at Release to Parole

Age	Number	Percent	Cumulative Number	Cumulative Percent
18	1	0.4%	1	0.4%
19	3	1.3%	4	1.7%
20 - 24	48	20.9%	52	22.6%
25 - 29	52	22.6%	104	45.2%
30 - 34	35	15.2%	139	60.4%
35 - 39	30	13.0%	169	73.5%
40 - 44	20	8.7%	189	82.2%
45 - 49	25	10.9%	214	93.0%
50 - 54	14	6.1%	228	99.1%
55 - 59	2	0.9%	230	100.0%

Average Age at Release to Parole

Age at Release	Number
33.43	230

Age at Revocation

Age	Number	Percent	Cumulative Number	Cumulative Percent
18	1	0.4%	1	0.4%
19	2	0.9%	3	1.3%
20 - 24	42	18.3%	45	19.6%
25 - 29	50	21.7%	95	41.3%
30 - 34	35	15.2%	130	56.5%
35 - 39	36	15.7%	166	72.2%
40 - 44	21	9.1%	187	81.3%
45 - 49	23	10.0%	210	91.3%
50 - 54	17	7.4%	227	98.7%
55 - 59	3	1.3%	230	100.0%

Average Age at Revocation

Age at Revocation	Number
34.27	230

Admission Status

Status	Number	Percent
First - Time	113	49.1%
Multiple	117	50.9%
Grand Total	230	100.0%

Gender

Gender	Number	Percent
Male	210	91.3%
Female	20	8.7%
Grand Total	230	100.0%

Race

Race	Number	Percent
WHITE	126	54.8%
BLACK	73	31.7%
HISPANIC	21	9.1%
NATIVE AMERICAN	9	3.9%
ASIAN	1	0.4%
Grand Total	230	100.0%

By Avg Min & Max Sentences

(Life set to 10-year average of 18.46 Yrs)

Avg MIN Sentence Mo's	Avg MAX Sentence Mo's	Number
58.77	122.77	230

Parole Revocations - FY2010 Statistical Reports

Revocation Date

Date	Number	Percent
7/2009	20	8.7%
8/2009	27	11.7%
9/2009	18	7.8%
10/2009	23	10.0%
11/2009	17	7.4%
12/2009	20	8.7%
1/2010	21	9.1%
2/2010	13	5.7%
3/2010	14	6.1%
4/2010	22	9.6%
5/2010	16	7.0%
6/2010	23	10.0%
Grand Total	230	100.0%

Most Serious Offense Category

Offense Category	Number	Percent
Drugs	58	25.2%
Theft	41	17.8%
Burglary	34	14.8%
Assault	24	10.4%
Robbery	21	9.1%
Motor Vehicle	19	8.3%
Fraud	15	6.5%
Weapons	7	3.0%
Other	6	2.6%
Homicide	3	1.3%
Morals	2	0.9%
Grand Total	230	100.0%

County Paroled To

County	Number	Percent
DOUGLAS	88	38.3%
LANCASTER	69	30.0%
DATA UNAVAILABLE	9	3.9%
DODGE	8	3.5%
SARPY	6	2.6%
SCOTTS BLUFF	6	2.6%
ADAMS	5	2.2%
PLATTE	5	2.2%
HALL	4	1.7%
MADISON	4	1.7%
BUFFALO	3	1.3%
DAKOTA	2	0.9%
DAWSON	2	0.9%
LINCOLN	2	0.9%
RED WILLOW	2	0.9%
RICHARDSON	2	0.9%
BOONE	1	0.4%
BROWN	1	0.4%
CASS	1	0.4%
COLFAX	1	0.4%
FRANKLIN	1	0.4%
HAMILTON	1	0.4%
LOGAN	1	0.4%
MERRICK	1	0.4%
OTOE	1	0.4%
PIERCE	1	0.4%
SAUNDERS	1	0.4%
SHERMAN	1	0.4%
YORK	1	0.4%
Grand Total	230	100.0%

Parole Revocations - FY2010 Statistical Reports

Minimum Sentence

Years	Number	Percent	Cumulative Number	Cumulative Percent
1 Yr or Less	17	7.4%	17	7.4%
1.01-2.00 Yrs	81	35.2%	98	42.6%
2.01-3.00 Yrs	34	14.8%	132	57.4%
3.01-4.00 Yrs	24	10.4%	156	67.8%
4.01-5.00 Yrs	21	9.1%	177	77.0%
5.01-6.00 Yrs	9	3.9%	186	80.9%
6.01-7.00 Yrs	5	2.2%	191	83.0%
7.01-8.00 Yrs	8	3.5%	199	86.5%
8.01-9.00 Yrs	3	1.3%	202	87.8%
9.01-10.00 Yrs	5	2.2%	207	90.0%
11.01-12.00 Yrs	3	1.3%	210	91.3%
13.01-14.00 Yrs	3	1.3%	213	92.6%
14.01-15.00 Yrs	3	1.3%	216	93.9%
15.01-16.00 Yrs	1	0.4%	217	94.3%
16.01-17.00 Yrs	5	2.2%	222	96.5%
18.01-19.00 Yrs	2	0.9%	224	97.4%
20+ Years	6	2.6%	230	100.0%

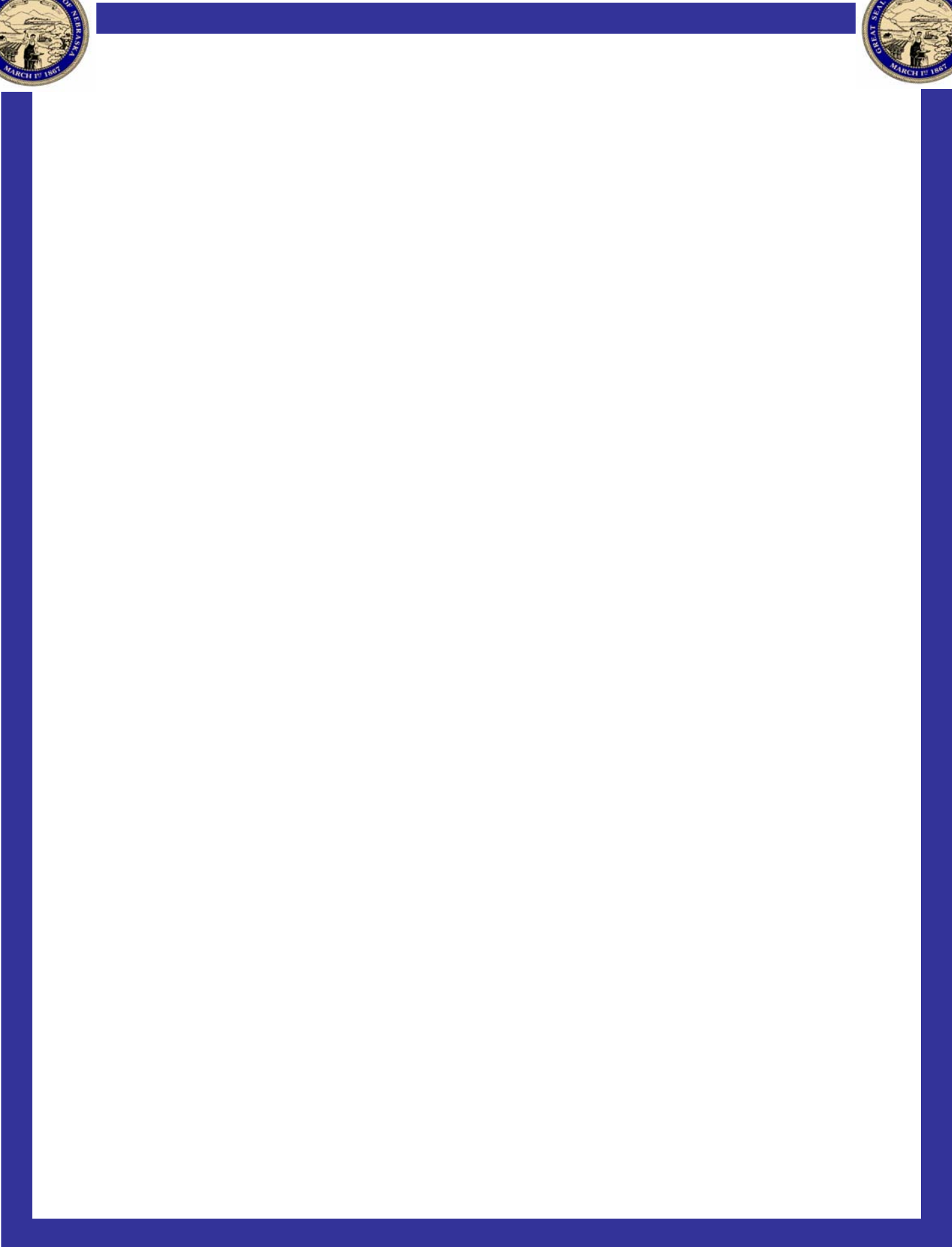
Maximum Sentence

Years	Number	Percent	Cumulative Number	Cumulative Percent
1 Yr or Less	3	1.3%	3	1.3%
1.01-2.00 Yrs	4	1.7%	7	3.0%
2.01-3.00 Yrs	28	12.2%	35	15.2%
3.01-4.00 Yrs	40	17.4%	75	32.6%
4.01-5.00 Yrs	39	17.0%	114	49.6%
5.01-6.00 Yrs	15	6.5%	129	56.1%
6.01-7.00 Yrs	11	4.8%	140	60.9%
7.01-8.00 Yrs	11	4.8%	151	65.7%
8.01-9.00 Yrs	7	3.0%	158	68.7%
9.01-10.00 Yrs	19	8.3%	177	77.0%
10.01-11.00 Yrs	3	1.3%	180	78.3%
11.01-12.00 Yrs	12	5.2%	192	83.5%
12.01-13.00 Yrs	1	0.4%	193	83.9%
13.01-14.00 Yrs	3	1.3%	196	85.2%
14.01-15.00 Yrs	3	1.3%	199	86.5%
15.01-16.00 Yrs	2	0.9%	201	87.4%
16.01-17.00 Yrs	1	0.4%	202	87.8%
17.01-18.00 Yrs	2	0.9%	204	88.7%
18.01-19.00 Yrs	1	0.4%	205	89.1%
19.01-20.00 Yrs	1	0.4%	206	89.6%
20+ Years	23	10.0%	229	99.6%
Life	1	0.4%	230	100.0%

Nebraska Department of Correctional Services
3-Year Recidivism* Data Report FY2004 to FY2007

Pop:	Releases				Recidivists				Technical Violators				% Recidivism			
	FY04	FY05	FY06	FY07	FY04	FY05	FY06	FY07	FY04	FY05	FY06	FY07	FY04	FY05	FY06	FY07
FEMALES																
Paroles	117	103	136	155	9	13	16	13	26	21	19	26	29.9	33.0	25.7	25.2
Mand Discharges	<u>119</u>	<u>128</u>	<u>205</u>	<u>165</u>	<u>20</u>	<u>22</u>	<u>31</u>	<u>18</u>	<u>n/a</u>	<u>n/a</u>	<u>n/a</u>	<u>n/a</u>	<u>16.8</u>	<u>17.2</u>	<u>15.1</u>	<u>10.1</u>
TOTAL	236	231	341	320	29	35	47	31	26	21	19	26	23.3	24.2	20.6	17.8
MALES																
Paroles	737	697	702	829	161	146	135	142	173	159	125	149	45.3	43.8	37.0	35.1
Mand Discharges	898	881	1072	1038	183	216	216	212	<u>n/a</u>	<u>n/a</u>	<u>n/a</u>	<u>n/a</u>	<u>20.4</u>	<u>24.5</u>	<u>20.1</u>	<u>20.4</u>
TOTAL	1635	1578	1774	1867	344	362	351	354	173	150	125	149	31.6	32.4	26.8	26.9
FEMALES & MALES																
Paroles	854	800	838	984	170	159	151	155	205	180	144	175	43.9	42.4	35.2	33.5
Mand Discharges	<u>1017</u>	<u>1009</u>	<u>1277</u>	<u>1203</u>	<u>203</u>	<u>238</u>	<u>247</u>	<u>230</u>	<u>n/a</u>	<u>n/a</u>	<u>n/a</u>	<u>n/a</u>	<u>20.0</u>	<u>23.6</u>	<u>19.3</u>	<u>19.1</u>
TOTAL	1871	1809	2115	2187	373	397	398	385	205	180	144	175	30.9	31.9	25.6	25.6

Starting in fiscal year 2003, NE-DCS began using ASCA-defined measures to configure recidivism rate.
*All recidivists were committed for new crimes or for technical violations within 3 years of their release date.





THIS PUBLICATION WAS PREPARED BY NEBRASKA
DEPARTMENT OF CORRECTIONAL SERVICES, PLANNING, RESEARCH AND
ACCREDITATION (PRA)

JAMES FOSTER, ADMINISTRATIVE ASSISTANT III
&
BECKI HICKMAN, SR. APPLICATION DEVELOPER- PRA