



2009

*NEBRASKA DEPARTMENT
OF CORRECTIONAL SERVICES*

35th

Annual Report
and
Statistical Summary



Department of Correctional Services Directory Agency 46



Department of Correctional Services

P.O. Box 94661

Location: Folsom & W. Prospector Pl.

Lincoln, NE 68509-4661

Building #1

(Lincoln Regional Center Campus)

TDD (402)479-5895

FAX Numbers:

Main Fax-Lobby 402-479-5119

Director's Office 402-479-5623

ROBERT P. HOUSTON, Director 402-471-2654

Deputy Director, Administrative Services, Robin Spindler

Deputy Director, Institutions, Frank X. Hopkins

Deputy Director, Programs and Community Services, Larry Wayne

Deputy Director, Health Services, Randy Kohl, MD

Deputy Director, Cornhusker State Industries, John McGovern

Accounting and Finance Manager..... Inga Hookstra
 ADA Coordinator/Victim Assistance Program..... Elizabeth Jeanette
 Adult Parole Administrator Cathy Gibson-Beltz
 Budget Management Analyst Kate Morris
 Corrections Programs Administrator Layne Gissler
 Director of Nursing..... Diana Tomek
 Facilities Engineering Manager..... Douglas K. Hanson
 Human Resources Administrator Marian Layman
 Information Systems Administrator..... Robert Shanahan
 Legislative Liaison Dawn Renee Smith
 Legal Division George Green
 Emergency Management Supervisor..... Brad Hansen
 Materiel Administrator Mary Carmichael
 Grants Administrator..... Patricia Sattler
 Planning, Research and Accreditation..... Steve King
 Organizational Development /
 Staff Training Academy Mikki Kirkpatrick
 Records Administrator..... Kyle Poppert
 Safety/Sanitation Coordinator..... Steve Vodicka
 Special Services Administrator Terry Ewing
 Behavioral Health Administrator..... Cameron White, PhD
 Behavioral Health Asst Administrator for
 Mental Health Director Mark Weilage, PhD
 Behavioral Health Asst Administrator for
 Substance Abuse Program Richard Thomas, PhD
 Behavioral Health Asst Administrator for
 Psychiatry Mohammed Kamal, MD

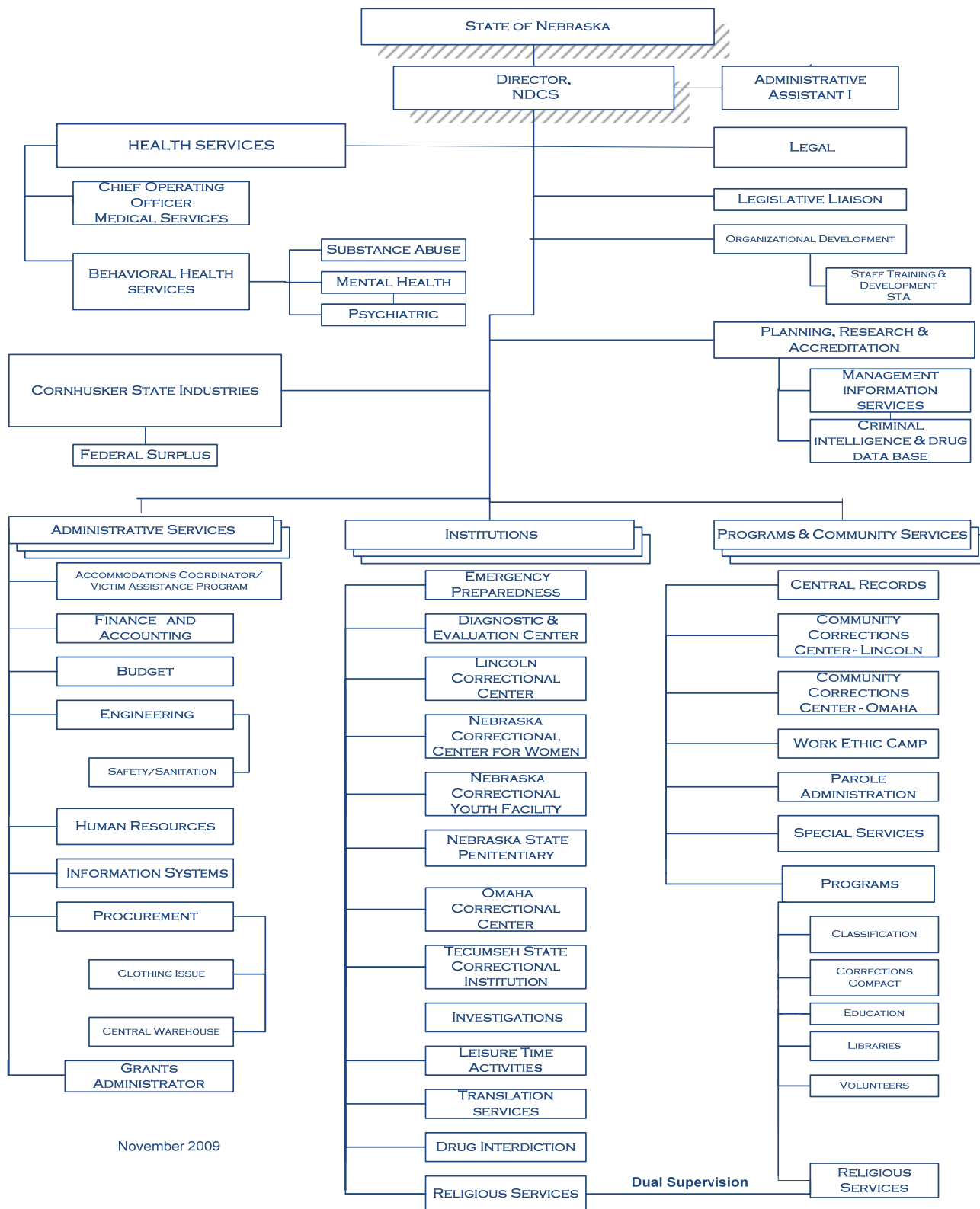
THIS PUBLICATION WAS PREPARED BY
NEBRASKA DEPARTMENT OF CORRECTIONAL SERVICES,
PLANNING, RESEARCH AND ACCREDITATION



Nebraska Department of Correctional Services Organizational Chart



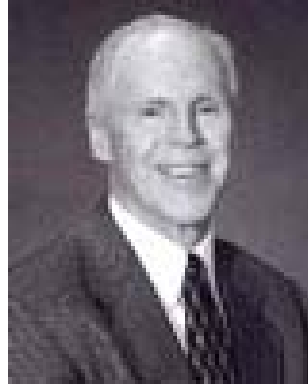
NEBRASKA DEPARTMENT OF CORRECTIONAL SERVICES



November 2009



Director Nebraska Department of Correctional Services



Robert P. Houston

Director Houston was appointed to this position by Governor Dave Heineman on March 14, 2005. Immediately preceding his appointment, he was Director of the Douglas County Department of Corrections having served in that position since April 2003. He started his state corrections career in 1974 as a counselor at the Nebraska State Penitentiary. In the years that followed, he held progressively more responsible positions throughout the Agency to include Unit Manager at the Lincoln Correctional Center, Unit Administrator at the Nebraska State Penitentiary, Associate Superintendent at the Omaha Correctional Center, Deputy Warden at the Penitentiary, Warden at three institutions Omaha Correctional Center, Lincoln Correctional Center, and Nebraska Correctional Youth Facility and from September 2002 to April 2003 he served as the Assistant Director of Programs and Community Services. Mr. Houston serves on many boards and committees such as the Jail Standards Board, the Crime Commission, the Community Corrections Council, the Capitol Facilities Planning Committee, and the Interstate Compact for Adult Offender Supervision. He is the Co-Founder and Member of the Omaha's Metropolitan Chief's Association, Board President of the UNO/UNL Criminal Justice Education Fund within the University of Nebraska Foundation, past president of the United State's Deputy Warden's Association and the Nebraska Correctional Association.

Mr. Houston has a Bachelor of Science in Criminal Justice from the University of Nebraska-Omaha and a Master of Science in Criminal Justice from the University of Nebraska.

I continue to be very proud to be a member of one of the very best correctional systems in the nation, the Nebraska Department of Correctional Services (NDCS). I present to you this 2009 Annual Report. Whether you are a NDCS staff member, researcher, legislator, student or member of the Nebraska community, please be assured that our Department employs the Nation's finest correctional practitioners to meet difficult challenges. Our rich history extends back to 1851 when we served as the Nebraska Territory Prison. Today, we are the State's largest criminal justice agency. NDCS maintains a firm commitment to providing effective protection for our citizens and high quality operations as was recognized two years ago when our Department received the "Eagle Award". We are now part of the small but elite group of prison systems in the nation that are 100% fully accredited by the American Correctional Association.



Director's Forward



As our inmate population grew, we responded with two legislative bills that have allowed us to house parole pending inmates at our Work Ethic Center (WEC) in McCook, Nebraska. We attend to the needs of county jails by providing jail management, leadership, emergency preparation and assist with medication aide training throughout the year. We engage in strategic planning with Nebraska Probation and the Community Corrections Council to expand community resources or to stem the growth in our inmate population. Our Department is determined to lower the cost of government while protecting the public. We are fully engaged in exploring front-end, in process and back-end solutions to crowding.

Each day we keep inmates engaged in meaningful and fulfilling jobs, programs and activities that contribute directly to our level of safety, security and order. The hard work and effort by Departmental staff assigned to Cornhusker State Industries (CSI) has increased the number of inmates employed by Industries. Our Department's education program is certified by the Nebraska Department of Education. Programming staff contribute by providing programs and by preparing outstanding volunteers to serve a unique role in support of inmates and the Department. NDCS continues to expand re-entry activities. We have more than doubled the size of our residential treatment for substance abuse. We now have residential mental health units for both male and female inmates.

Our Strategic Master Plan provides a plan for the Agency's future needs. We are confident that Nebraskans are intent on having an even safer state while lessening our reliance on incarceration.

I am very pleased that you are taking the time to study our Department's challenges and accomplishments. Please call me at 402-479-5710 if I can assist in any way.



Table of Contents



Agency Directory 1

Organizational Chart 2

Director’s Bibliography and Forward 3-4

TABLE OF CONTENTS 5-7

SECTION I

FY2008 Annual Cost Report 8

Employee Awards 9

SECTION II

NDCS Mission Statement..... 11

NDCS Ethics..... 12

NDCS Vision Points 13-15

Providing Opportunity 16

ADMINISTRATIVE SUPPORT..... 17

Legal 18

Legislative Coordinator 18

Planning ,Research and Accreditation 19-21

Staff Training Academy / Organizational Development 22-23

SECTION III

DEPUTY DIRECTORS 25

ADMINISTRATIVE SERVICES..... 27

Accommodations Coordinator/Victim Assistance Program 28

Finance and Accounting 28

Budget..... 29

Engineering 29

Safety/Sanitation 29

Human Resources 30

Agency Employee Profile 31

Procurement..... 32

Grants Administration 32

Information Systems 33



Table of Contents



DEPUTY DIRECTOR OF INSTITUTIONS.....	35
Diagnostic and Evaluation Center	36
Lincoln Correctional Center	37
Nebraska Correctional Center for Women.....	38
Nebraska Correctional Youth Facility.....	39
Nebraska State Penitentiary.....	40
Omaha Correctional Center.....	41
Tecumseh State Correctional Institution	42
Programs and Services under supervision of Deputy Director of Institutions	43-44
Religious Services—Interpretation/Translation Services—Emergency Preparedness— Investigations—Drug Interdiction—Leisure Time Activities—NDCS Security Manual	
DEPUTY DIRECTOR OF PROGRAMS AND COMMUNITY SERVICES	45
Community Corrections Center-Lincoln	46
Community Corrections Center-Omaha	47
Work Ethic Camp.....	48
Adult Parole Administration.....	49
Central Records	50
PROGRAMS ADMINISTRATOR.....	50
Corrections Compact.....	50
Education.....	51
Self-Betterment.....	51
Volunteers.....	51
Libraries	51
Reentry.....	52
Inmate Transportation and Extradition.....	52
Educational Programming offered.....	53-54
DEPUTY DIRECTOR OF HEALTH SERVICES	55
Description of Activities	56
Goals and Objectives	57
Performance and Evaluation Measures	57
Services provided	57
Behavioral Health Programming/Services.....	58
Substance Abuse Services	58
Behavioral Health Programming Offered by Institution	59
DEPUTY DIRECTOR OF CORNHUSKER STATE INDUSTRIES	
Cornhusker State Industries.....	62
Federal Surplus	62



Table of Contents



STATISTICAL SUMMARY

SECTION IV

Admissions and Releases	65
Average Monthly Population.....	66

SECTION V

TOTAL POPULATION

FEMALE	67
MALE	71
PAROLE.....	74

SECTION VI—ADMISSIONS

NEW SENTENCED ADMISSIONS	77
REVOCATION ADMISSIONS.....	80
NEW SENTENCED AND REVOCATION ADMISSIONS	84
EVALUATORS/SAFEKEEPERS ADMISSIONS	86
WORK ETHIC CAMP ADMISSIONS	87

SECTION VII — RELEASES

INSTITUTIONAL RELEASES.....	89
EVALUATORS AND SAFEKEEPERS RELEASES	92
WORK ETHIC CAMP RELEASES	94

SECTION VIII COMMUNITY CORRECTIONS

COMMUNITY CORRECTIONS	96
-----------------------------	----

SECTION IX PAROLE

PAROLE ADMISSIONS	98
PAROLE DISCHARGES.....	101
PAROLE REVOCATIONS.....	105

SECTION X—RECIDIVISM REPORT

Recidivism Data	108
-----------------------	-----

Nebraska Department of Correctional Services Annual Cost Report Fiscal Year 2009

The graph below represents an allocation of all expenditures for all budgeted fund types for the Department of Correctional Services for the fiscal year. All direct and indirect expenses are allocated proportionately to the facilities indicated below, except that Education expenses are direct costs at NCFY & NCCW. The cost per inmate represents an average cost per inmate of all general, cash and federal expenditures excluding General Fund Aid & Depreciation & Capital Construction expenditures.

FY 2009	Personal Services		Operations	Transportation ¹	SpecProjects & Equip Fund	Health Services ²	Education ³ Sal & Oper	Admin ⁴	Total	cost/day per inmate	cost/yr per inmate
	Services	Operations									
Neb Corr Youth Facility	3,666,275	583,481	24,107	22,660	622,949	289,480	502,591	5,711,543	160.07	\$58,424	
Tecumseh Corr Center	19,805,678	4,071,135	96,103	143,381	6,039,600	379,403	2,649,029	33,184,329	95.92	\$35,012	
Community Corr Ctr LNK	2,489,800	787,041	64,593	16,592	2,378,053	149,387	374,079	6,259,545	45.95	\$16,773	
Community Corr Ctr OMA	1,461,839	391,243	59,743	9,498	1,044,982	65,645	213,146	3,246,096	54.23	\$19,794	
Neb State Penitentiary	22,065,860	4,373,084	25,824	258,147	6,793,498	426,762	2,924,528	36,867,703	94.74	\$34,582	
Neb Corr Ctr for Women	6,114,700	1,045,735	21,037	63,335	1,737,516	460,659	843,870	10,286,852	103.36	\$37,726	
Diagnosis & Eval Ctr	6,545,007	1,623,949	11,386	40,620	1,925,752	120,974	903,509	11,171,197	101.27	\$36,965	
Lincoln Correctional Ctr	11,364,976	2,285,325	18,255	67,871	3,024,898	190,022	1,509,044	18,460,391	106.54	\$38,889	
Omaha Correctional Ctr	8,688,544	2,550,163	71,404	75,648	4,331,460	272,099	1,255,876	17,245,194	69.51	\$25,370	
Work Ethic Camp ⁵	3,412,906	592,480	110,763	20,439	656,340	41,231	453,637	5,287,796	58.60	\$21,391	
Adult Parole ⁶	1,991,545	403,241	130,392	12,966	0	0	277,074	2,815,218	8.04	\$2,936	
Total Programs	87,607,130	18,706,877	633,607	731,157	28,555,048	2,395,662	11,906,383	150,535,864	\$75.81	\$27,671	
Federal Surplus Property	221,930	441,750	7,015	8,770	0	0	65,255	744,720	n/a	n/a	
Central Warehouse	0	2,639,028	0	0	0	0	253,450	2,892,478	n/a	n/a	
Correctional Industries	4,479,717	5,397,690	99,466	424,329	0	0	998,871	11,400,073	n/a	n/a	
Subtotal	4,701,647	8,478,468	106,481	433,099	0	0	1,317,576	15,037,271	n/a	n/a	
Community Based Services		72,500	0	0	0	0	0	72,500	n/a	n/a	
Building Depreciation		1,036,260	0	0	0	0	0	1,036,260	n/a	n/a	
County Jail Reimbursement		3,910,000	0	0	0	0	0	3,910,000	n/a	n/a	
Construction Programs		0	0	470,100	0	0	0	470,100	n/a	n/a	
Other Subtotal	0	5,018,760	0	470,100	0	0	0	5,488,860	n/a	n/a	
Total	92,308,777	32,204,105	740,088	1,634,356	28,555,048	2,395,662	13,223,959	171,061,995	n/a	n/a	

1. Includes \$674,002 of expense for State owned vehicles, all fund sources. 2. Includes medical, mental health and substance abuse expenditures. 3. Includes salaries, benefits and operating of all education programs, allocated to each facility, except that at NCFY & NCCW they are direct costs. 4. Includes indirect expenditures allocated from Central Administration, except for facility specific special projects and capital outlay, and all expenditures from the Byrne Grants program. 5. Cost per inmate at WEC calculated based on average number of probationers and inmates times the average length of program, which is five months. Previous year counts were based only on admissions, due to the varied lengths of stay. 6. The average number of Lifetime Sex Offenders supervised during FY08-09 (46) is included this year in the Parole numbers and calculation of costs. Number of parolees totaled 913.



Employee awards—2009



Employee of the Year Award
Front: Matilda Serna, Bobby Cordova, Trace Malousek, Becki Hickman
Back: Ann Allen, Jason Phelps, Lynn Baldwin, Paul Norrid

Community Service Award
Front: Krisite Sargent, Outstanding Ambassador Award; Trish Brockman, Leadership Award; Melanie Dehning, Community Service Award

Team Award
Back: Justin Drahota, Team Award; Ladena Koch, Field Training Officer Award; Ashley Yacevich, Employee of the Year Award; TJ VonSeggern, Team Award



Supervisor/Manager of the Year Award
Front: Nicole Lockhart, Joyce Woofter, Paul Lienke, Rodney Evans
Back: Dallen Johnsen, Chris Connelly, Barb Lewien, Dwight Rickard
Not pictured: Larry Harlow

In the Line of Duty Award
Chad Pierce, Leshane Pierce, Director Robert Houston, Kirk Woltman, Governor Dave Heineman

Not Pictured: Rafael Hernandez



Partnership Award — Our Saviour's Lutheran Church FEAST Program Sponsors

- | | |
|------------------|---------------------|
| Jim Brewer | Barbara Brewer |
| Mae McDonald | Bonnie Nelson |
| John Harrison | Rita Harrison |
| Clarence Zwetzig | Doris Taylor |
| Jim Rowoldt | Linda Moore |
| Bruce Riedman | Jan Riedman |
| Tammy Schafer | Tom Hanson |
| Kent Reinhard | Theresa Reinhard |
| Mike Gittins | Cris Gittins |
| Stan Carlson | Joan Carlson |
| Dave Larson | Rev. Lowell Hennigs |





MISSION STATEMENT

The Mission of the Department of Correctional Services is to serve and protect the public by providing control, humane care, and program opportunities for those individuals placed in its custody and supervision, thereby facilitating their return to society as responsible persons.



NDCS Ethics



Nebraska Department of Correctional Services Ethics

We respect and protect the safety and rights of the public we serve.

We respect the importance of all programs/departments, within and outside of the Agency, in order to facilitate good communication and cooperation.

We respect and protect the civil and legal rights of all individuals. We will not use any type of cruel, inhumane or corporal punishment, excessive force or in any way mistreat individuals under the Agency's custody and control.

We preserve the integrity of private information.

We make all appointments, promotions and dismissals in accordance with rules, laws, and merit, rather than the furtherance of personal interest or favoritism.

We promote and contribute to a work place that is safe, healthy, and free of harassment in any form. We will not discriminate against any person because of race, sex, color, religion, ancestry, national origin, disability or age.

We keep conversations with all persons on a professional level at all times. We will not use profane or abusive language toward others. We communicate in a way that promotes respect and maintains satisfactory working relationships.

We will not bring in any type of contraband to an Agency facility/program area.

We will not use personnel, property, resources, or funds other than in accordance with prescribed constitutional, statutory, and regulatory procedure. We will be good stewards of state resources, including efficient use of our work time.

We maintain professional and credible behavior by exemplifying the Agency's Mission Statement and Vision Points.



NDCS Vision Points



**NDCS
Vision Points**

1994-2004

2004-Present



NDCS Vision Points



The first six vision points identified in 1994 have been incorporated into every facet of the NDCS, and continues to be a vital part of the Agency.

STAFF DEVELOPMENT AND PERSONAL MASTERY

To recruit and retain, at all levels, individuals diverse in background. To develop and maintain a positive environment and comprehensive training program that will enhance each employee's potential to achieve personal mastery.

HEALING ENVIRONMENT

NDCS strives to create and maintain an environment in which healing is paramount and inmates are able to acquire necessary skills, education/tools and treatment.

SHARED VALUES

Recognizing the inherent respect due all persons, the NDCS believes:

- ◆ Staff, volunteers and inmates have value and an opportunity to uniquely contribute to achieving our mission.
- ◆ Achieving our mission depends on teamwork in an environment of openness, inclusion, honesty, integrity and commitment.
- ◆ Leadership is a responsibility shared by all.
- ◆ Everyone has the potential to make positive changes in their attitudes, life skills, and conduct.
- ◆ Each of us should be accountable to ourselves and the public for the effective and efficient use of our time and all available resources to accomplish our mission.
- ◆ We must play an instrumental role in helping the community recognize its responsibility as a partner in achieving our mission.

CONTINUOUS QUALITY IMPROVEMENT

It is the vision of NDCS to foster the Continuous Quality Improvement journey, thereby creating an environment that is system-centered, which:

- ◆ supports Agency values and mission;
- ◆ opens communication;
- ◆ removes barriers at all levels;
- ◆ creates cooperative partnerships, trust, and respect;
- ◆ fosters ownership, commitment; and
- ◆ recognizes the leader in all of us.

CREDIBILITY

Proactively increase the NDCS' credibility and support both internally and externally.

COMMUNITY CORRECTIONS

The NDCS will promote community corrections and alternatives to incarceration. The NDCS will seek partnership with the private sector to create a continuum of sanctions and program opportunities during and subsequent to incarceration to facilitate successful re-entry into society.

- ◆ Create a partnership with private sector – to create work programs and treatment opportunities during and subsequent to incarceration.
- ◆ NDCS will promote community corrections and intermediate sanctions and alternatives to incarceration.



CREDIBILITY

We commit ourselves to furthering public trust and credibility

SEAMLESS CRIMINAL JUSTICE SYSTEM

We commit ourselves through collaboration with other entities to create a seamless criminal justice system within a restorative justice framework

COMMUNITY AWARENESS AND INVOLVEMENT

We commit ourselves to partnering with the community to encourage awareness and involvement toward the successful reintegration of offenders

BEST PRACTICES

We commit ourselves to identifying and implementing best practices

FISCAL ACCOUNTABILITY

We commit ourselves to fiscal accountability and cost efficient and effective operations

OFFENDER ACCOUNTABILITY

We commit ourselves to developing and maintaining environments in which offender accountability will flourish

FAMILY INVOLVEMENT

We commit ourselves to developing and fostering strategies that allow families an active role in the offenders' incarceration and reintegration

COMMITMENT TO STAFF

We commit ourselves to partnering with staff who strive to optimize their contribution to our mission and standards

OFFENDER PROGRAMS

We commit ourselves to creating and sustaining meaningful program opportunities for offenders



Equipment used in the C-Tech training program

The C-Tech training program is an on-going program with the Nebraska Department of Correctional Services (NDCS) that aims to provide marketable skills and prepare inmates to return to the community.

The C-Tech coursework is focused on proper tool use and construction techniques, industry standards, troubleshooting and repair on systems. This is the basis of today's computer networking, cable TV and satellite communications systems that are focused on copper-based and fiber-optics systems. The program requires 150 hours of classroom training with additional hands on training assisting the Departments Information Technology section with internal cabling projects. This hand's on training has saved the NDCS money while providing the inmates needed experience.

So far twenty seven inmates have received certification as Network Cabling Specialists using the Departments C-Tech program and now have marketable skills for their return into the community.

For more information about the NDCS C-Tech training program, contact instructor Jerry Rotschafer at 402-471-6265 or jerry.rotschafer@nebraska.gov



ADMINISTRATIVE SUPPORT

Legal

Legislative Liaison

Planning, Research and Accreditation

Organizational Development / Staff Training



NDCS Administrative Support



Legal Division
George Green, General Counsel 402-479-5735

The Legal Division supports all Department of Correctional Services programs and institutions by giving legal advice and representation regarding labor relations, inmate rights, contracts, legislative issues, inmate grievances, transportation orders, or matters involving litigation and the Courts. Legal Division staff work with the Courts, the Nebraska Department of Justice, attorneys, arbitrators, State Senators, the State Claims Board, the Office of Public Counsel, other State Agency officials, and the general public.

The Legal Division provides these services

- ◆ Decides administrative appeals filed by inmates from Institutional Disciplinary Committee decisions
- ◆ Investigates inmate grievances appealed to the Director
- ◆ Represents the Department before the State Claims Board
- ◆ Represents the Department before the Nebraska Equal Opportunity Commission
- ◆ Reviews legislative issues
- ◆ Advises Department staff on legal matters
- ◆ Promulgates rules under the Administrative Procedures Act
- ◆ Facilitates representation of Department staff by the Attorney General
- ◆ Conducts involuntary medication and involuntary transfer hearings for inmates
- ◆ Represents the Department in grievances under the State Personnel Rules or Labor Agreement
- ◆ Prepares and files with the courts transcripts for appeals filed under the Administrative Procedures Act contesting decisions of the Appeals Board
- ◆ Responds to requests for inmate records maintained by the Nebraska Department of Correctional Services
- ◆ Reviews employee discipline recommendations and workplace harassment allegations

FY2009 STATISTICS FROM THE LEGAL DIVISION

*771 inmate appeals of IDC decisions were heard by the Appeals Board.

*20 APA's (litigation filed in District Court under the Administrative Procedures Act) were filed in District Courts.

1,091 Step-Two inmate grievances (appeals at the Director's level) were processed.

*209 Tort Claims/Miscellaneous Claims filed by inmates, staff, or members of the public were processed.

Legislative Coordinator
Dawn Renee Smith 402-479-5713
dawnrenee.smith@nebraska.gov

The Legislative Coordinator is tasked with coordinating all aspects of the legislative process within the agency. She serves as a point of contact between the Department of Correctional Services, the Governor's Policy Research Office, and the Legislature. The Legislative Coordinator also serves as the Public Information Officer for the Agency and is a member of the agency's executive staff. She reports directly to the agency head.



NDCS Administrative Support

PLANNING, RESEARCH AND ACCREDITATION (PRA) Steve King, Manager 402-479-5767

The PRA manager provides guidelines, oversight, and structure for the planning process through-out the department to ensure consistency with vision points, key initiatives, core values and goals. He provides assistance, as needed, to institutional and program planning processes; and supervision and assistance in the following areas:

RESEARCH

Steve King 402-479-5767

PRA reviews all research designs and proposals, whether internal or external to the agency, to ensure compliance with the agency's goals and objectives, rules and regulations, and the maintenance of privacy rights for participants. A review of the purpose, hypothesis, methodology, and data requirement for all research proposals is conducted to assess the potential impact (benefits, security issues, cost, and staff resources). PRA works closely with universities, students, and independent researchers, to facilitate research within the Agency.

Strategic Planning: The process of developing a comprehensive plan that provides leadership, direction, and resource prioritization to insure that the intended vision, mission, goals and objectives of the Nebraska Department of Correctional Services (NDCS) are met.

Performance Measurement: The process of establishing measures that describe how success in achieving the NDCS's mission will be measured and tracked. Performance measure targets provide the quantifiable answer to the question, "How will we know we've been successful in achieving our mission?" Analyzing the gaps between current performance levels and performance targets helps an agency identify priority areas in need of improvement, develop strategies that will close gaps, and identify best practices that can be applied throughout the organization.

Effective leadership is based on how key decisions are made, communicated, and carried out at all levels of an organization. It relies on shared values, expectations, and purposes that are communicated and reinforced among leaders and managers and are made evident in the actions of the organization. Effective leadership must help establish a clear vision and the expectation for performance and performance improvement. Strategic planning and performance measurement are valuable tools for leaders to set organizational direction, performance expectations, customer focus, and a leadership system that promotes excellence.

As correctional resources become more limited, strategic planning becomes more critical to target those limited resources toward the most effective strategies and the most important results. Strategic planning involves answering the following key questions:

- **Where Do We Want To Be?** Vision, mission, goals, objectives, and performance targets provide the answer.
- **Where Are We Today?** A description of our current state includes statutory references, measures of current performances, and assessments of the external environment, customers/constituents, stakeholders, risks, and internal resources.
- **How Do We Intend To Close the Gap Between Where We Are and Where We Want To Be?** By analyzing performance measures, we can identify the gap between performance and expectations. Strategies, initiatives, and financial plans identify and set forth methods to close the gap.

A strategic plan is a comprehensive plan that aligns resources with the Department's priorities, mission, and vision. NDCS has the option of choosing from many different methods for developing a strategic plan. To date, the Department has released a Strategic Plan in 1992, 1997, and in 2006.



ACCREDITATION

James Foster 402-479-5810

The Nebraska Department of Correctional Services has been involved in the Accreditation process since 1979. All of the Department state institutions, Central Office, Staff Training Academy and Adult Parole Administration are accredited. After initial accreditation, institutions and programs are audited every three years in an effort to maintain accreditation. Accreditation offers the opportunity to evaluate the Department's operations against national correctional standards, remedy deficiencies, and upgrade the quality of correctional programs and services. Benefits of the accreditation process include improved management and conditions of confinement. Accreditation also increases accountability and enhances public credibility for administrative and line staff. The process provides for a safer and more humane environment for personnel and offenders. This process has assisted the Department by establishing criteria for upgrading programs, personnel and physical plant on a continuing basis.

American Correctional Association is revising all existing standards to facilitate performance measures. The move towards performance measures requires a "fundamental shift in thinking" for the field of corrections. Instead of showing standard compliance through activities or practices, a specified condition will need to be measured and achieved. Performance based standards require corrections to embrace the concepts of Continuous Quality Improvement and challenge the traditional ways of thinking and operating.

Performance based standards will not only affirm that the Department is meeting its mission, but provide a measurement of its efforts. Operational effectiveness and efficiencies will be measured over a three-year accreditation /audit period. The measurements will enable the Department to benchmark services and improve the quality of life for staff, inmates and the public. The Nebraska Department of Correctional Service is proud to be one of an elite group of states that have all their facilities and programs accredited through the American Correctional Association.

POLICY

James Foster 402-479-5810

The Department's Annual review of two hundred and fifteen (215) Administrative Regulations is coordinated through Planning, Research and Accreditation (PRA). Policy Directives issued from the Director are tracked by PRA for incorporation into Administrative Regulation Policy. PRA maintains the Agency's Administrative Regulation history file and updates Administrative Regulations and Policy Directives on the intra-agency network and the NDCS official web site.

ANNUAL REPORT AND STATISTICAL SUMMARY

James Foster 402-479-5810 Becki Hickman 402-479-5760

Planning, Research and Accreditation is responsible for compilation and distribution of the Annual Report and Statistical Summary.



NDCS Administrative Support



PLANNING, RESEARCH AND ACCREDITATION (PRA) continued..

APPLICATIONS DEVELOPMENT/STATISTICAL REPORTING

Becki Hickman 402-479-5760 BJ Spring 402-479-5662

During fiscal year 2009, inmate data based applications and reporting have expanded dramatically. PRA now manages 48 applications on the Corrections Websuite, a web-based application, along with reporting on the Oracle Siebel report writer system.

This year, an automated Misconduct Report and Routing System was implemented, tracking the institutional misconduct reports. From writing, to hearings, through the Wardens approval process, this all electronic MR system will enhance the ability to glean a tremendous amount of data concerning the disciplinary process throughout all of the facilities.

A new visitor tracking system was also put in to place in the facilities, tracking the actual visitors entering the facility and accounting for the number and duration of the visits.

PRA continues to provide information/data to other state and federal agencies, the State Legislature, researchers, national surveys and the DCS management staff.

CRIMINAL INFORMATION/DRUG TESTING

Jeff Peterson 402-479-5912

Jeff.a.peterson@nebraska.gov

In FY2004, the NDCS was chosen by the National Institute of Justice for a Data Mining Sharing Initiative Project. The goal was to assess, review analytical & presentation software, and review data mining capabilities of intelligence/information data that would assist local and regional law enforcement.

Since then, we have taken various steps to share Intelligence/Information data with local, State, and Federal law enforcement entities. During FY2009, NDCS continued sharing Intelligence/Information data with various agencies to better serve the State of Nebraska. This is being done with the Criminal Analyst working closely with the NDCS investigators, continued networking and communication with law enforcement agencies and the sharing of data through the NIJ Data Mining Sharing Initiative Project. NDCS will continue to provide NDCS Intelligence/Information to the users with the greatest need in a timely manner.

Drug Testing

The NDCS' Inmate Random Drug Testing Positive Rate decreased for FY2009. A total of 5891 Facility Random Drug Test was submitted with a positive rate of 1.02%. This compares with 1.38% for FY 2008, 1.27% for FY 2007 and 1.76% for FY2006. NDCS continues to use all drug interdiction tools available to maintain a safe and drug free Department.

The department remains committed to a zero tolerance drug policy.

Performance Based Measurement System

BJ Spring 402-479-5662

NDCS continues to support the Association of State Correctional Administrators (ASCA) by inputting statistical data into the Performance Based Measurement System (PBMS). The PBMS systematically collects, manages and shares data across jurisdictions, enabling administrators to identify strengths and weaknesses internally and in comparison with other correctional systems. Its purpose is to develop consistent and meaningful correctional performance measures for adult prisons and community-based programs and to develop an automated system that would enable the collection, management, and sharing of that data – specifically in the areas of Public Safety, Institutional Safety, Mental Health and Substance Abuse, Justice, Academic Education, Health Care, and Offender Profile/Contextual data.

In early 2009, NDCS joined a 3-Year ASCA PBMS Strategic Management group, tasked with planning for improvements and enhancements of the PBMS. In 2009, NDCS continues to redevelop our information gathering practices to incorporate current and future PBMS needs. In the near future, ASCA will add Fiscal and Personnel measures into the PBMS.

NDCS Administrative Support



Staff Training Academy (STA)

2320 N. 57th Street

Lincoln, NE
402-471-1781

Training & Development Manager

Ken Sturdy

The Academy offers or helps coordinate the following:

Pre-Service Training
In-Service Training
Leadership/Quality Courses
Field Training Officer (FTO) Schools
EAP courses bi-monthly for Support Staff
Instructor Schools
Seasonal Range classes
NIC Video Broadcasts
Corrections Learning Network
Special classes as needed

The Academy facility includes

Three large classrooms
Gymnasium
Large Breakroom
Firearms Simulator system
4 inmate cells for training scenarios
Conference Room
Resource Center
103 stall parking lot
Internet access in each classroom
and research area

Training Specialists

Levi Bennett

William Boucher

Bruce Kramer

Susan Phinney

Russ Smith

Jen Westwood

Secretary

Linda Schwaninger



NDCS Administrative Support



ORGANIZATIONAL DEVELOPMENT
Mikki Kirkpatrick , Organizational Development Manager 402-479-5660

The purpose of Organizational Development is to continue to facilitate a Total Quality approach of organizational transformation at the Nebraska Department of Correctional Services by evaluating current policy and practice.

DCS continues to work towards an agency-wide transformation in which we shift how we fundamentally think and work together. To date, several integrated initiatives have been designed and implemented to aid in this transformation.

Continuous Quality Improvement (CQI) CQI is a philosophy and strategy for continuously improving performance at every level of the organization and in all areas of responsibility. CQI is a total systems approach that promotes innovation, leadership, creativity and personal mastery. There are several active Quality Councils in the Department and training efforts are continuous. Courses offered include Quality Awareness, Teams, Tools, and Techniques, Meeting Facilitation, Excelling as a First Time Supervisor, and Correctional Leadership I and Advanced Correctional Leadership courses.

Diversity - This initiative was first identified in 1991 and established in 1992 and has involved extensive work including diversity training, a work environment survey, policy revisions, and awareness efforts. In addition, the Department recognized that its strength and its major resource in achieving goals and objectives is the agency's staff. Human relationships provide the cornerstone of all Departmental efforts. Work continues in recruiting, retaining, and training culturally and ethnically diverse staff.

Leadership Program - Beginning in 2006, the Department started putting selected middle level management through a leadership program. This program is a part of the Departments' Succession Planning, which includes course curriculum, job challenges and job shadowing to develop leaders for the future





Deputy Directors

Robin Spindler, Administrative Services

Frank X. Hopkins, Institutions

Larry Wayne, Programs and Community Services

Dr. Randy Kohl, Health Services

John McGovern, Cornhusker State Industries





Deputy Director of Administrative Services



The Deputy Director of Administrative Services is responsible or the oversight of the following programs and areas:

Budget Administration

Purchasing/Inventory

Accounting and Finance

Information Systems

Engineering

Safety and Sanitation

Accommodations Coordinator

Human Resources

Grants

Victim Assistance Program

Deputy Director Spindler has worked for the Nebraska Department of Correctional Services for over 20 years. She began her correctional career at the Omaha Correctional Center and has worked in various positions since that time.

Deputy Director Spindler has taught classes at Bellevue University and Kaplan University.

Deputy Director Spindler earned a Juris Doctorate in 1984.

She was appointed Deputy Director of Administrative Services in August of 2005





NDCS Administrative Services



ACCOMMODATIONS COORDINATOR /VICTIM ASSISTANCE PROGRAM Elizabeth Jeanette 402-432-5182

The Nebraska Department of Correctional Services is committed to ensuring that compliance to all aspects of the Americans With Disabilities Act is met. The office of the ADA Coordinator responds to all requests for accommodation/s from DCS employees, inmates and the public. It is also responsible for the development, review and revision of Departmental policies and procedures to ensure compliance. This Division is responsible for the Return To Work policy which assists employees injured on or off the job, or who have an illness that affects their ability to perform their job, to return to work in a modified status.

The Victim Assistance Program recently began instructing Victim Impact Classes for offenders at the Nebraska Correctional Youth Facility and the Omaha Correctional Center. The underlying goal of these classes is to help offenders develop empathy - making them more in tune to the humanistic harm caused when a crime is committed; thereby, reducing the likelihood of them committing future crimes inside and outside of the correctional facility. The heart of this program is having them listen and interact with victims who have been harmed by crime.

Services provided include:

- Crisis intervention throughout the corrections process, including assisting victims with concerns related to inmates and parolees under Nebraska's jurisdiction;
- Community education about policies and procedures of the Nebraska Department of Correctional Services;
- Assistance preparing for parole hearings;
- Referrals to other state and local community services;
- Explanation and referral for restitution processing assistance; and
- Face-to-face meetings with the offender through Victim Offender Dialogue.

FINANCE AND ACCOUNTING Inga Hookstra, Controller 402-479-5756

The Accounting Division has responsibility for all financial and inmate accounting functions for the Nebraska Department of Correctional services. Additionally, the Accounting Division is responsible for establishing uniform accounting practices and procedures within the Department of Correctional Services consistent with state policy and practice, as well as generally accepted accounting principles. The Accounting Division is responsible for providing fiscal support to all programs and facilities within the Department and has the oversight for internal controls.

Financial Accounting functions include both accounts payable and accounts receivable. This includes payments for all goods and services received by the Department regardless of funding source, including verification that all payments are appropriate through the pre-audit process. Accounts Receivable covers all billings both internal and external to state government, including Cornhusker State Industries, Federal Surplus Property, and county safekeepers. Reports from the Nebraska Information System are generated and made available to the various staff throughout the Department electronically.

Inmate Accounting provides for a system of accounting for all inmate funds through the Inmate Trust Fund and ledgers maintained in the Correctional Information and Tracking system. The functions include processing transactions related to the various accounts (institutional, confiscated, restitution, maintenance, suspense, savings, and legal) held by inmates, processing inmate payroll (both institutional and private venture), and reporting necessary to inmates, courts, and other authorized entities. Inmate Accounting also receipts, tracks and provides reports on parole programming fees.

The Accounting Division is also responsible for all fiscal reporting on grants and preparing various financial statements, including canteens, Cornhusker State Industries, and Federal Surplus Property. Additionally, claims are audited and processed in accordance with the law for the County Jail Reimbursement aid program. Other areas of responsibility include internal fiscal audits, Coordinating external financial audits, coordinating payroll reconciliation and verification, monthly Business Managers' Meetings, and quarterly Canteen Supervisors Meetings.



NDCS Administrative Services

BUDGET

Kate Morris, Budget Management Analyst 402-479-5702

The Budget Management Analyst is responsible for planning, organizing, monitoring and reporting the Department's fiscal allocations and fiscal reporting systems. She also analyzes, manages and reviews the preparation, documentation, implementation and control of program budgets including the biennium and deficit budget processes. Fiscal and accounting data are compiled for use in budget evaluation and adjustment, cost analysis, budget projections and reporting. The area of responsibility also includes the fiscal note process.

ENGINEERING

Doug Hanson, Facilities Engineering Manager 402-479-5742

The engineering division provides the department with technical and facilities management assistance for construction projects of all sizes, from the preliminary planning stage to completion and readiness for occupancy. The engineering division is responsible for the development and implementation of the capital construction budget and deferred repair program for all state correctional facilities.

Facilities engineering works with the correctional administrators in the planning, design, construction and occupancy of new and remodeled facilities.

Engineering provides technical assistance for utility and energy contracts. The engineering staff provides guidance and technical assistance to the various facilities and programs to manage their maintenance programs. Engineering also oversees the maintenance and custodial program (maintenance section) for the central administrative buildings.

The engineering division also has oversight of the safety and sanitation section. The safety and sanitation section is responsible for addressing the safety functions of NDCS, provides periodic inspections of all facilities, and provides assistance in the accreditation process. This section works closely with the state fire marshal's office and other regulatory agencies in the resolution of compliance issues involving all NDCS facilities.

SAFETY/SANITATION

Steve Vodicka 402-479-5778

This section is responsible to provide a secure and safe environment for both staff and inmates to realize individual potential. The safety and sanitation functions are accomplished through inspections of all facilities on a periodic basis. Administrative Regulations are developed and revised in order to comply with American Correctional Association (ACA) standards and other state and federal statutes, codes and regulations, Occupational Safety and Health Administration (OSHA) regulations, the National Electrical Code (NEC), and National Fire Protection Association (NFPA) standards. The Safety Coordinator conducts bi-annual Safety Awareness Training for employees, which covers all of the above mentioned regulatory agencies. The Safety Coordinator is a regular member of the DCS internal auditing team and has responsibility for the Department's asbestos abatement program and environmental monitoring program



NDCS Administrative Services

HUMAN RESOURCES

Marian Layman, Human Resources and Development Administrator 402-479 5752



The Human Resources Section leads the effort in the recruitment and retention of quality staff for the Department of Corrections. These employees are dedicated to protecting the public, and to making a positive difference in the lives of others.

Human Resources staff provide services ranging from payroll administration, job classification, strategic management, and serve as a contact for employees facing illness or injured on the job, to personal development training courses.

Human Resources serve as consultants to all staff in areas of performance improvement through coaching, counseling, and if necessary, discipline. The main focus is the development of healthy working relationships through conflict resolution and immediate review of workplace allegations, as well as having policies which promote decision making at the lowest possible level.

Human Resources takes pride in keeping staff informed of agency functions like employee award and recognition activities, employee benefit programs, wellness promotions, and much more. This communication is achieved two ways: 1) agency email / notification of "Helpful Hints for Employees," and 2) a link to these articles and other key activities posted on the agency web site marked "Employee Information from HR."

Labor Relations is another avenue to retain and recruit quality staff by use of Interest Based Bargaining in lieu of the traditional position bargaining, the agency created opportunities in solving problems and reaching solutions on issues of most importance to both parties.

With employee recruitment and retention being a shared responsibility, Human Resources partners with other areas of the agency. Examples of partnerships include: succession planning for promoting quality staff under our Annual Roster process; innovative recruitment page on the agency web site, returning employees to work through light duty assignment or ADA accommodations, and recognizing employee's contributions through on-site and agency wide recognition awards for outstanding individual achievement as well as team contributions.

Other services include: pre-employment and random drug testing, employee medical exam process as well as minimum physical standards, review of criminal records checks, and paid internships.

The Nebraska Department of Corrections Human Resources Section is looking towards the future through the establishment of a virtual employee personnel file, a streamlined employment application process, and an expanded Talent Management Software System accessible by all staff.

Note: Agency Employee Profile on Following Page



NDCS Administrative Services

HUMAN RESOURCES Continued



AGENCY EMPLOYEE PROFILE

Agency Authorized FTE (FY 2008-2009):	2363.5
Authorized Custody FTE (CO, Cpl, Sgt):	1038.0
Authorized Unit Caseworker FTE:	231.0
Agency Current Vacancy Rate (103.74 as of August 11, 2009)	4.37%
Custody Vacancy Rate (CO, Cpl, Sgt) (16 as of August 11, 2009)	1.54%
Unit Caseworker's Vacancy Rate (4.99 as of August 11, 2009)	2.14%

Source: Agency Budget Staffing Report dated August 11, 2009

EEO STATISTICS:*

TOTAL:

White	2046
African American	102
Hispanic	75
Asian/Pacific Islander	22
Other	32

BY GENDER:

MALE:

White	1349
African American	64
Hispanic	52
Asian/Pacific Islander	19
Other	16

FEMALE:

White	697
African American	38
Hispanic	23
Asian/Pacific Islander	3
Other	16

*Source: EEO Report/Statewide Summary 9/22/09

TREATMENT STAFF**: (Numbers reflect "Authorized" FTE, not "Filled" FTE. The Authorized FTE reflects positions providing direct treatment, excluding administrative positions, e.g., Director of Nursing or Administrator of Substance Abuse, etc. Numbers do not include contracted Health Services for TSCI or OCC.)

Physicians	3 (2 discretionary)
Psychiatrists	2
Physicians Assistants	7
Nurse Practitioner	3
Nurses (RN'S and LPN'S)	47
Dentists	5
Dental Assistants	4
Clinical Psychologists	12
Psychologists	4
Mental Health Practitioners	28
Substance Abuse Counselors (and Treatment Specialists)	60
Master Social Workers	5
Teachers (Education Program)	30

**Authorized FTE Source NIS (Nebraska Information System) – Position Control



NDCS Administrative Services

PROCUREMENT

Mary Carmichael, Materiel Administrator 402-479-5717

The Purchasing Section is responsible for procurement of all goods/services, inventory control processes, the operation of the NDCS Central Warehouse, the operation of Staff Clothing-Issue, and the coordination of form usage within the Agency. The Materiel Administrator is responsible for the review, coordination and approval of all Purchasing functions of the Agency.

Purchasing actively pursues the acquisition of quality products and services at the most economical cost. This is done in part by assuring the accuracy of specifications, competitive bidding, quality control checks of deliverables, utilizing Department of Administrative Services (DAS) commodity contracts, coordinating shared contracts with other State agencies as appropriate, monitoring vendor and contractor performance and by utilizing Cornhusker State Industries as a preferred Agency source. NDCS Purchasing staff is responsible for ensuring products and services are delivered timely and received as ordered. They interact with facility and program staff to assure end-user needs are being met, to address procurement and/or receiving issues and to coordinate completion of Agency service contracts.

Inventory responsibilities include the tracking of all Fixed Assets within the Nebraska Information System (NIS) and the formulation of standardized supply inventory practices throughout the Agency. Inventory actions involving NDCS owned property is monitored and annual reports regarding NDCS Fixed Assets are submitted to DAS as appropriate. The NDCS Materiel Control Manager is responsible for coordinating the motor vehicle needs of all NDCS facilities and programs. This includes monitoring vehicle mileage logs, coordinating movement of vehicles within the Agency, coordinating vehicle repairs, appropriate processing of accident reports and coordination of vehicle purchases/leases.

The NDCS Central Warehouse services all Lincoln facilities. The operation has a dual purpose – to fill facility and program requisitions from stock for standard, frequently used products and to receive all deliveries from outside vendors for each of the DCS Lincoln locations.

All staff uniforms are issued and tracked through the centralized Clothing Issue operation. Clothing Issue is responsible for both the initial issue to new hires and replacements to existing staff.

GRANTS ADMINISTRATION

Patricia Sattler, Federal Aid Administrator III 402-450-9532

The Federal Aid Administrator III is responsible for coordinating and managing all aspects of the department's grant activities from federal, state, and other funding sources to support worthy and qualifying projects. She is also responsible for providing technical assistance to agency staff on all grant activities including preparation, application, monitoring, and reporting.

Additionally, the Grants Administration section is responsible for reviewing and responding to all sub-grantee applications and inquiries as well as conducting program audits to ensure activities are carried out in a responsible and consistent manner as per grant guidelines. This position works closely with the Accounting Division for fiscal monitoring and reporting on all grants.



NDCS Administrative Services



INFORMATION SYSTEMS

Bob Shanahan, Information Services Administrator 402-479-5809

The Information Systems (IS) Department is responsible for providing computer support to all NDCS staff, Cornhusker State Industries (CSI), and the staff and members of the Nebraska State Board of Parole. There are approximately 1300 computers and 50 servers dispersed to 20 different sites. The NDCS network supports the use of this equipment and provides a pathway for accessing the State's Mainframe computer, the Nebraska Information System (NIS), the state's centralized email system, and other information resources. The NDCS network also supports remote access and management of various building automation and security systems as well as systems used by inmates in the CSI shops, educational programs and inmate Law Libraries.

The IS Department provides administration and management of the NDCS network and provides assistance to all NDCS staff in the determination of technical specifications to meet the needs of new application software, systems, or changes in functional requirements. Responsibilities of the Information Systems Department include the installation, repair, ordering and replacement of computer systems and peripherals as well as the development and support of computer applications for internal use and keeping a current inventory of computer equipment and software.





Deputy Director of Institutions



Deputy Director of Institutions is responsible for the oversight of the following institutions and areas:

Diagnostic and Evaluation Center

Lincoln Correctional Center

Nebraska Correctional Center for Women

Nebraska Correctional Youth Facility

Nebraska State Penitentiary

Omaha Correctional Center

Tecumseh State Correctional Institution

Emergency Preparedness

Investigations

Drug Interdiction

Interpretation/Translation Services

Religious Services (Dual Supervision)



Deputy Director Hopkins has held a number of positions in the Department of Correctional Services, including Warden of the Nebraska State Penitentiary for nine years.

He has taught classes at Wesleyan University and earned a Masters degree in Criminal Justice in 1980.

Deputy Director Hopkins was appointed Deputy Director - Institutions, effective October 4, 1999.



Diagnostic and Evaluation Center



3220 West Van Dorn Street
Lincoln, NE 68522
402-471-3330
Assistant Warden

Charles Rine

Security Levels

Maximum



Mario Peart, Warden

The Diagnostic and Evaluation Center was opened in August of 1979 as a 160-bed, maximum custody, reception, diagnostic, evaluation, assessment, classification and assignment facility.

The single structure, two-story institution consists of nine inmate housing units and an infirmary, which includes eight licensed hospital beds and a fully staffed initial admissions clinic. Administrative offices and the infirmary are located on the upper level of the institution. All other inmate housing, programming areas, a gymnasium and custody and case management offices are located on the lower level.

As provided by State Statute, all adult males sentenced to the Department of Correctional Services by the County and District courts of the State of Nebraska are received into the correctional system at the Diagnostic and Evaluation Center. In addition, the institution houses ninety-day evaluators sentenced by the court for assessment, county safe-keepers, interstate transfers, returned parolees and escapees.

Programs: Due to the short length of stay at the institution, there are no industry programs and limited programming.

Each newly admitted inmate, following review of the admission order to ensure legal commitment, begins participation in an intensive medical, psychological and social assessment process. This process culminates in the finalization of an individual classification study and specific programming recommendations to the Classification Officer relative to custody status and institutional placement. Varied program services are offered and encouraged through recreation and library programs. The maintenance of family and community ties is encouraged through the visitation, mail and telephone programs. Religious programming is also available to the inmate population. Other opportunities including Alcoholics Anonymous, and a Pre-Release program are available for inmate participation. The Diagnostic and Evaluation Center has been a part of The Nebraska Department of Correctional Services since 1979.

For information about DEC, contact the Public Information Officer, Sarah Nelson @ 479-6343 or sarah.nelson@nebraska.gov.

Design Capacity - 160

Average Population 302

Number of Authorized Staff 138.5

Cost Per Inmate Per Year:

\$36,965

ACA ACCREDITED SINCE 1984





Lincoln Correctional Center



Diane Sabatka-Rine, Warden

3216 West Van Dorn St
Lincoln, NE 68522
402-471-2861
Deputy Warden
Robert Madsen
Associate Warden
Denise Skrobecki
Security Levels
Maximum, Medium

The Nebraska Department of Correctional Services' Lincoln Correction Center, located in the capital city of Lincoln, is a medium/maximum security facility for adult male offenders. Originally opened as part of the adjacent maximum security Diagnostic and Evaluation center in 1979, the two units were separated into two distinct facilities in 1993. Due to their close proximity, the Diagnostic and Evaluation Center continues to provide after hours medical coverage for the Lincoln Correction Center.

The Lincoln Correctional Center provides care, custody and programming services to a variety of primarily younger, first time inmates. Each of the six separate housing units are unique. As an extension of the 16-bed Control Unit, one unit has been modified to be a segregation unit. One unit is designated for the Department's In-Patient Mental Health Program. One unit is designated to house inmates who have been classified to protective custody status. One-half of one unit is designated for the Department's In-Patient Sex Offender Program. The remaining housing units house general population inmates. All inmates are provided the opportunity to become involved in academic programs. All general population inmates may participate in academic, institutional maintenance and work programs.

Structure, philosophy and dedicated personnel facilitate cooperation between security staff and other departments. The institution provides a unit management program approach that is responsive to the needs of the inmate population while maintaining a secure environment. Inmate supervision is a responsibility shared by staff at all levels in all departments.

For information about LCC contact Public Information Officer Tammy Kluver @ 402-479-6175 or Tammy.kluver@nebraska.gov



Design Capacity- 308
Average Population 475
Number of Authorized Staff 239
Cost Per Inmate Per Year:
\$38,889
ACA ACCREDITED SINCE 1984



Nebraska Correctional Center for Women



1107 RECHARGE ROAD
YORK, NE 68467
402-362-3317

Assistant Warden

Tim Siemek

Security Levels

Maximum, Medium, Minimum



John Dahm, Warden

The Nebraska Correctional Center for Women is the only secure state correctional institution for adult women. NCCW began operation in 1920 as the "State Reformatory for Women". The original facility consisted of a two-story house used as an inmate and staff residence. The institution was a working dairy farm. The current institution consists of 17 buildings on 27 acres of land secured by two security fences. A 12.5 million dollar addition to the facility was opened in October 2004. The original house, known as the Cottage is still being used today as a learning center for the Living Skills Program. NCCW is the Diagnostic and Evaluation center for all females committed to the State Department of Corrections.

Parenting Program: Started in 1974, the Parenting Program at NCCW was the first of its kind in the United States, allowing overnight visits for children.

In 1994, NCCW implemented another cutting edge mother/child program, a Nursery modeled after the Bedford Hills Correctional Center in New York, the Nursery Program allows mothers to keep their infant child with them on grounds for up to 18 months, with the goal of having mother and child leave together.

Both parenting programs include classes and workshops on parenting skills, prenatal care, child development, child health and safety, and improving relationships. Inmates who participate in the Parenting Programs must meet all NCCW eligibility requirements prior to visits or admittance into the Nursery Program.

Programs: In-Patient Substance Abuse Program, Out-Patient Substance Abuse, Outpatient Mental Health Programs, General Education (has a state accredited ABE program), Prison Industries Employment and college level classes.

The Nebraska Correctional Center for Women has been a part of the Nebraska Department of Correctional Services since 1920 beginning as the State Reformatory for Women.

For more information about NCCW contact the Public Information Officer, Tim Siemek @ 402-362-3317 ext. 226 or email tim.siemek@nebraska.gov

Design Capacity - 275

Average Population 273

Number of Authorized Staff 131

Cost Per Inmate Per Year:

\$37,726

ACA ACCREDITED SINCE 1981





Nebraska Correctional Youth Facility



Mike Kenney, Warden

2610 North 20th Street, East

Omaha, Nebraska 68110

402-595-2000

Assistant Warden

Trish Brockman

Security Levels

Maximum, Medium, Minimum

The Nebraska Correctional Youth Facility (NCYF) started to become a reality in 1994 with Legislative Bill 988, which created the Office of Juvenile services and established the requirement to plan for the construction of a secure Youth Confinement Facility. Subsequently, the facility was transferred to the Nebraska Department of Correctional Services. The NCFY received its first inmates in August 1998. NCFY serves as the reception center for youthful male inmates who are 18 years of age and under with the Nebraska Department of Correctional Services. NCYF houses inmates from early adolescence to age 21 years and 10 months. The inmates are introduced to NCYF through its Orientation Program. This 30-day program consists of a functional overview of each department prior to initial classification and appropriate placement into general population. Unit Management, Custody, Mental Health, Substance Abuse and Education Programs focus on the team approach at NCYF. NCYF inmates experience a highly structured routine that emphasizes the ability to transition back into society. Volunteers from the community provide invaluable support for continuation and expansion of the various programs at NCYF.

Programs:

NCYF offers high school credit courses through the NCYF Community High School program as well as GED coursework. Students can earn a high school diploma or a GED certificate. ABE/Basic literacy classes are provided for students to improve scores in reading, math and/or writing. ESL (English as a second language) are available for students learning the English language.

Life Skills classes include Job Skills, Money Management and Parenting (Inside Out Dads) are offered to all inmates.

Vocational programs such as the ProStart culinary arts program, Project Greenthumb horticulture program and PAWSitive Outcomes dog training program are available to interested, qualified inmates.

College courses are available through grant funding.

In addition to educational opportunities, Mental Health programming is also available through individual psychotherapy sessions, group psychotherapy courses, Anger Management, Aggression Replacement Therapy, Victim Impact, Crisis Intervention and mood management. Non-residential Substance Abuse treatment is available which includes Alcohol and Drug Education/Motivation to Change, 12-Step and Relapse prevention.

For more information on NCYF Contact the Public Information Officer, Jim Sweredoski @ 402-595-2000 or Jim.Sweredoski@nebraska.gov



Design Capacity- 68

Average Population 98

Number of Authorized Staff 83.75

Cost Per Inmate Per Year:

\$58,424

ACA ACCREDITED SINCE 2000.



Nebraska State Penitentiary

4201 South 14th Street
Lincoln, NE 68522
402-471-3161
Deputy Warden

Richard Cruickshank

Associate Warden

Joel Staley

Associate Warden

Cathy Sheair

Security Levels

Maximum, Medium, Minimum



Dennis Bakewell, Warden

The Nebraska State Penitentiary located in Lincoln is the oldest state correctional facility in Nebraska, opening in 1869. Until after World War I, it was the only adult correctional facility in the state.

During 1980-1981, the existing cellblocks constructed during the second half of the 19th century were replaced by four (later five) modular housing units. A new administrative complex and an EPA approved multi-fuel power plant were also completed at the same time. An existing dormitory building constructed in the 1950's was retained as a medium security facility and a portion currently houses the Residential Treatment Community for substance abuse offenders. Two new 100 bed dormitory units were opened in 1998. A thirty-six-bed control unit also built in the 1950's continues in use as a high security segregation facility. The Industries Plant, Laundry and other support buildings were retained from the older facility as well.

The inmate population at the NSP typically consists of 21 years of age and older inmates serving medium to longer sentences.

The Nebraska State Penitentiary uses the Unit Management concept designed to improve control and staff/inmate relationships by dividing the larger institution population into smaller, more manageable groups and to improve and personalize the delivery of rehabilitative services.

NSP is the site of major components of the Agency's Cornhusker State Industries (CSI) program.

Programs: NSP offers a variety of education/rehabilitation programs designed to enhance an inmate's chances for successful community adjustment upon release. These include Educational/Life Skills and Vocational Programs, Self-Improvement (Residential and Outpatient Substance Abuse Treatment, Religious Programming and Self-Betterment Activities), and Support Services.

The Nebraska State Penitentiary has been a part of the Nebraska Department of Correctional Services since 1869.

For more information about NSP Contact ,Public Information Officer, Winfield Barber @ 402-479-3227 or email Win.barber@nebraska.gov

Design capacity 718

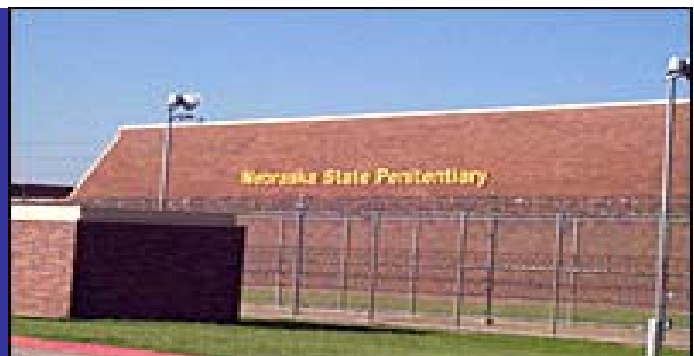
Average Population 1,066

Number of Authorized Staff 466

Cost Per Inmate Per Year:

\$34,582

ACA ACCREDITED SINCE 1985





Omaha Correctional Center



Karen Shortridge , Warden

2323 AVENUE J
OMAHA, NEBRASKA 68110
402-595-3964

Deputy Warden

Charlie West

Associate Warden

Ken Schmit

Security Levels

Medium, Minimum

The Omaha Correctional Center (OCC) is a medium/minimum security facility located on a 37-acre site in East Omaha, just south of Eppley Airfield. OCC was opened April 24, 1984, at a total cost of approximately \$17 million. The facility has a current population of approximately 600 adult male inmates.

The center has a separate entrance/Administration building as well as an inner complex including four housing units, an indoor/outdoor visiting area, library, religious center, dental and medical area, segregation unit, academic and pre-employment training areas, central physical plant, laundry, kitchen and dining room, Cornhusker State Industries, a canteen and gymnasium.

PROGRAMS

Mental Health Counseling, Academic Education, Substance Abuse Counseling, to include inpatient and outpatient programs, Alcoholics Anonymous, self betterment clubs, Alternatives to Violence Program (AVP), volunteer activities, pre-release programs, the re-entry initiative, English as a Second Language (ESL), work programs to include traditional facility work programs, outside work details, Cornhusker State Industries and the Canine Program.

The Omaha Correctional Center has been a part of the Nebraska Department of Correctional Services since 1984.

For more information about OCC Contact Public Information Officer,
Ron Limbeck @ 402-595-3963 or Ron.Limbeck@nebraska.gov



Design capacity- 396

Average Population 680

Number of Authorized Staff 179

Cost Per Inmate Per Year:

\$25,370

ACA ACCREDITED SINCE 1986



Tecumseh State Correctional Institution



2725 North Highway 50
Tecumseh, NE 68450
402-335-5998

Deputy Warden

Brian Gage

Associate Warden

Dominic Witherspoon



Fred Britten, Warden

Security Levels

Death Row, Intensive Management

Maximum, Medium

The Tecumseh State Correctional Institution (TSCI) was established by LB 150 in 1997 and is the only Nebraska Maximum/Medium Custody, adult male facility in a rural setting.

All inmates at the Tecumseh State Correctional Institution are males adjudicated as adults and classified as medium or maximum custody. The institution has an operational capacity of 978 inmates, which includes 784 general population beds and a 194-bed special management unit for Administrative Segregation, Disciplinary Segregation and Intensive Management inmates. TSCI is the only male facility that houses Intensive Management inmates. Death Row inmates are housed at TSCI; the death penalty is administered at the Nebraska State Penitentiary in Lincoln.

TSCI received its first inmates in December 2001.

For more information about TSCI Contact the Public Information Officer Daniel Hayes @ 402-335-5113 or daniel.hayes@nebraska.gov

Design capacity 960

Operational Capacity 978

Average Population 948

Number of Authorized Staff 482

Cost Per Inmate Per Year:

\$35,012

ACA Accredited Since 2003





Programs and Services Under Supervision of Deputy Director of Institutions



RELIGIOUS SERVICES

Joe Baldassano 402-479-5730

The Department provides opportunities for inmates to practice their religious faith. Maintaining impartiality, consistency and equality for time, space, and resources among all recognized faith groups is a prime consideration. Each institution assigns a person to coordinate religious activities. Guidance for the implementation of the agency religious program is obtained through the Religion Study Committee (RSC). The assistant to the Deputy Director for institutions is the coordinator for the agency's religious program at the Central Office level, and co-chairs the Religion Study Committee. The Religion Study Committee membership is comprised of the facility religious coordinators and a legal Representative.

INTERPRETATION/TRANSLATION SERVICES

Robert Madsen 402-471-2861

In 1998, LB 389 appropriated funding to the Department of Correctional Services for four full-time interpreters. Four Spanish and English speaking interpreters were hired to help facilitate oral and written interpretation and translation services to inmates, inmate families and the community regarding matters relative to the Department of Correctional Services. These staff are assigned by geographic area and travel to each DCS institution/program as needed. The Department's interpreters also make arrangements with community resources, for interpretation and translation services for languages other than Spanish and English.

EMERGENCY PREPAREDNESS

Brad Hansen 402-479-5617

Emergency Preparedness is a comprehensive system that requires a continuous commitment to personnel and resources to ensure a systematic approach to responding to emergencies. Key to the success of the Emergency Preparedness Program are the full time staff at the Department level as well as the facility level that ensure the Department's readiness to respond through emergency policy, planning, training, check lists and exercises. Essential to the success of a response to a facility emergency are the specially trained teams. The teams consist of two Department wide teams—Special Operations Response Team (SORT) and the Crisis Negotiation Team (CNT) and the institutional based Correctional Emergency Response Team (CERT).

INVESTIGATIONS

Brad Hansen 402-479-5617

The Department Investigation program is committed to the investigation and prosecution of all criminal activity by either staff or inmates. The Department has two full time investigators that are law enforcement certified and have the power to arrest and detain. The Department Investigators work closely with the facility staff in developing information and they also work closely with outside agencies, i.e., the Nebraska State Patrol, local law enforcement and County Attorneys.

DRUG INTERDICTION

Brad Hansen 402-479-5617

The Department has a zero tolerance policy on the use of drugs by inmates and staff. The Drug Interdiction program works toward that goal by employing a multi-faceted approach. The program consists of information gathering and sharing, telephone monitoring, random and targeted urinalysis testing on staff and inmates, ION Mobility Spectrometry searches of visitors, staff and inmates, K-9 searches and the Drug Offender Classification Program. Note that the Planning and Research division keeps information and data regarding the Department's drug interdiction efforts. Additionally, that section coordinates with lab personnel and generates the lists of inmates to be tested. Please refer to the section in the Annual Report under Drug Testing/Drug Intelligence for further information.



Programs and Services Under Supervision of Deputy Director of Institutions



LEISURE TIME ACTIVITIES

Frank X. Hopkins 402-479-5733

Leisure time activities provide an avenue for self-development by inmates as well as helping create a humane environment. It allows inmates to pursue individual hobbies and develop individual talents. Each institution has qualified staff to supervise recreation activities. These include exercise, athletics, games, music, painting, writing, and handcrafts.

NDCS SECURITY MANUAL

Helen M. Torres 402-479-5607

Joe Baldassano 402-479-5730

The Department's Security Manual contains procedures for institution security and control, with detailed instructions for implementing these procedures. The Department Security Administrators as well as the Department Emergency Management Supervisor, the Planning, Research and Accreditation Administrator, the Deputy Directors and the Director review all Security Manual Chapters and Audit Instruments annually. The office of the Deputy Director – Institutions is responsible for updating and maintaining the Security Manual. Additionally, the office of the Deputy Director – Institutions works with the Security Administrators in reviewing the Department's policy directives in order to determine whether immediate revisions to the Security Manual are required. Security Audit Teams conduct security audits of each facility on an annual basis. Along with security audits, security procedure assessments and/or system checks will be completed at each NDCS facility at a minimum of three times per year. The office of the Deputy Director – Institutions is responsible for reviewing security audit, procedure assessment and system check reports and following up as necessary. Additionally, this office maintains records of security audits, procedure assessments, and system checks conducted by the Department.



Deputy Director of Programs and Community Services



The Deputy Director of Programs and Community Services is responsible for the oversight of the following institutions and areas.

Community Corrections Center-Lincoln

Community Corrections Center-Omaha

Work Ethic Camp

Adult Parole Administration

Central Records

Classification

Corrections Compact

Education

Library-Recreation & Law

Religious Services (Dual Supervision)

Volunteers

Inmate Transportation & Extradition



Deputy Director Wayne has worked for the Nebraska Department of Correctional Services for 33 years.

He has worked in various capacities within the Department and served as Warden ten years at the Nebraska Correctional Center for Women and three years at the Diagnostic and Evaluation Center.

He was appointed Deputy Director of Programs and Community Services in September of 2003.



Community Corrections Center-Lincoln



Rex Richard, Warden

2720 West Van Dorn

Lincoln, NE 68522

402-471-0740

Assistant Warden

Matt Heckman

SECURITY LEVELS

COMMUNITY A AND COMMUNITY B

The Department's community correction facilities in Lincoln and Omaha are designed to provide the initial step that many offenders take in returning to Nebraska's communities. This is accomplished through a graduated release and a systematic decrease in supervision and corresponding increase in responsibility. Inmates nearing release on parole or discharge from sentence are eligible through a classification system to be promoted to community custody status. Inmates on Community A are assigned to a detail within the facility, assignments within other state agencies, or work assignment in the community. Community A inmates are furnished clothes, room and board and a daily wage. Community B inmates participate in the work and education release program. Inmates on work release are employed in the community, receive competitive wages and pay applicable taxes. Inmates on educational release attend local vocational, technical, business colleges and universities. Community B inmates are responsible for their own clothing and personal items and pay room and board costs of \$12.00 per day.

Programs: Work detail, work release, educational release, furloughs, ABE/GED, and substance abuse programming; community activities passes (e.g. recreation, shopping, religious) and other programming (family counseling, mental health, AA/NA) may be arranged through community support programs and agencies.

Community Corrections Center-Lincoln is a Ventures In Partnership (VIP) participant with Roper Elementary School located a short distance northeast of the Corrections Center.

The Work Release Program has been a part of Nebraska Correctional Services since 1967.

For more information about CCC-L, contact Public Information Officer, Pam Prater @ 402-471-0740 or pam.prater@nebraska.gov



Design Capacity - 200

Average Population 373

Number of Authorized Staff 48.75

Cost Per Inmate Per Year:

\$16,773

ACA ACCREDITED SINCE 1981



Community Corrections Center-Omaha



2320 Avenue J
Omaha, NE 68110
402-595-2010

Assistant Warden
Edward Fabian

Security Levels
Community A and Community B



Ryan Mahr, Warden

The Community Corrections Center-Omaha houses inmates who are classified at Community A or B custody levels and are near the discharge of their sentence or pending a parole hearing. Inmates on Community A are assigned to work crews where they work under the supervision of a DCS/state employee. Work Detail crews may provide services that support the facility such as food preparation, housekeeping, and general ground and building maintenance. Other crews perform community service work like maintaining state and city parks, vehicles, roads, bridges and duties for other state facilities. Room, board, and clothing are provided. The inmate is paid a daily wage. All NDCS inmates are required to save 5% of their net earning in a release savings account.

Work Release (Community B) inmates are employed in the community and earn a competitive wage. All applicable taxes on wages are paid, in addition to paying \$12.00 per day room and board fee. Educational Release inmates attend local vocation/technical schools, community colleges and universities. They may elect to perform regular work duties or accept part-time employment to pay for their room and board.

Programs: Work detail, work release, educational release, furloughs, ABE/GED, and substance abuse programming; individual activities passes (e.g. recreation, shopping, religious) and other programming (i.e. family counseling, mental health, AA/NA) may be arranged through community support programs and agencies. CCC-O (originally OCC-Work Release Unit) has been a part of the Department of Correctional Services since 1971. The current facility was constructed in July of 1985.

For more information about CCC-O, contact Public Information Officer, Ed Fabian @ 402-595-2010 or edward.fabian@nebraska.gov

Design Capacity- 90

Average Population 164

Number of Authorized Staff 329

Cost Per Inmate Per Year:

\$19,794

ACA ACCREDITED SINCE 1981





Work Ethic Camp-McCook

2309 N. Hwy 83
McCook, NE 69001
308-345-8405



Barb Lewien, Warden

The program offered at the Work Ethic Camp is designed for first-time, non-violent male and female probation offenders and inmates preparing for re-entry into the community.

Security Level

Intensive Supervision Probation Offenders
Minimum B Inmates

The philosophy of the Work Ethic Camp is that the behavior and attitudes reflecting positive work ethics can be learned and transferred to all areas of an individual's life.

The mission of the Work Ethic Camp is to provide an integrated program in partnership with the Probation and Parole Administrations that combines evidence-based practices within a highly structured treatment environment.

The Work Ethic Camp offers a 180-day, five phase program. Probation offenders must have been convicted as an adult of a felony offense to be eligible for the WEC program. Inmates must be in a parole pending status or assigned to the Work Ethic Camp through the classification process. Completion of the program can be achieved as early as 150 days if earned through positive program progress and behavior.

Probation offenders and inmates perform community service work on and off-site for local and area government and non-profit entities. Their performance and behavior is evaluated once each phase as a minimum.

Each offender/inmate will receive an individualized program and case plan. Programs include: GED/ABE, short-term residential substance abuse treatment, cognitive restructuring, life skills, work attitudes and behaviors, budgeting, offense cycle, victim impact, parenting and vocational programming. Specialized programs that may be earned through positive program progress and behavior include the Rewards and Trust Programs. Approved visitors may visit one time each week and phone calls are allowed through the Inmate Calling System at fifteen minutes per day. All clothing is provided for offenders/inmates. Hygiene products and canteen products can be purchased once a week. Upon completion of the program, probation offenders will be released on intensive supervision probation. Inmates in a parole pending status will be released on parole supervision. Those inmates assigned to WEC through classification, will be transferred to a community center upon completion of the program.

For more information about the Work Ethic Camp, contact the Public Information Officer
Maria Bieker (308) 345-8405, maria.bieker@nebraska.gov



Design Capacity - 100
Average Population 103
Number of Authorized Staff 70
Cost Per Inmate Per Year
\$21,391
(based on # of inmates/
probationers and an average 5 month stay)

ACA ACCREDITED 2004

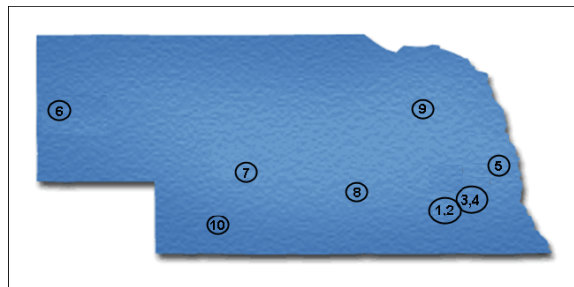


NDCS Programs and Community Services



Adult Parole Administration
P.O. Box 94661 Folsom and W. Prospector Place
Lincoln, Nebraska 68509-4661
Cathy Gibson-Beltz, Parole Administrator
Anne Hansen, Assistant Parole Administrator

The Office of Adult Parole Administration was established by an act of legislation in 1969 as a program under the Department of Correctional Services. Adult Parole Administration provides supervision, guidance and assistance to offenders paroled by the Board of Parole as they re-enter the community after a period of incarceration. In 2003 LB 1199 provide that Adult Parole Administration would also provide lifetime supervision of high risk sex offenders released to the community. There are adult parole offices located in Omaha, Lincoln, Norfolk, Grand Island, North Platte and Scottsbluff to provide supervision and surveillance of parolees and sex offenders across the state. Adult parole officers work closely with local law enforcement, community service providers and members of the community to enable paroled offenders and high risk sex offenders to become law-abiding, productive members of society.



1. Adult Parole Central Office-Lincoln:

Folsom and W. Prospector Place
 Building #1
 (on The Lincoln Regional Center Campus)
 P.O. Box 94661
 Lincoln, NE 68509-4661
 (402) 479-5771
 FAX: (402) 479-5804

2. Nebraska Interstate Compact Office (Parole):

Folsom and W. Prospector Place
 Building #1
 (on the Lincoln Regional Center Campus)
 P.O. Box 94661
 Lincoln, NE 68509-4661
 (402) 479-5768
 FAX: (402) 479-5804

3. Lincoln District Parole Office:

3800 Vermaas Place, Suite 100
 Lincoln, NE 68502
 (402) 471-1280
 FAX: (402) 471-1283

4. Lifetime Sex Offender Unit:

3800 Vermaas Place, Suite 100
 Lincoln, NE 68502
 (402) 471-1284
 FAX: (402) 471-1283

5. Omaha District Parole Office:

1313 Farnam Street
 Omaha, NE 68102-1869
 (402) 595-2050
 FAX: (402) 595-3874

6. Scottsbluff Regional Parole Office:

Panhandle Office Complex
 P.O. Box 1500, 4500 Ave. I
 Scottsbluff, NE 69363-1500
 (308) 632-1283
 FAX: (308) 632-1313

7. North Platte Regional Parole Office:

State Office Building
 200 South Silber Avenue
 North Platte, NE 69101
 (308) 535-8115
 FAX: (308) 535-8175

8. Grand Island Regional Parole Office:

TierOne Bank Building
 1811 West 2nd Street, Suite 225
 Grand Island, NE 68803
 (308) 385-6230 or (308) 385-6215
 FAX: (308) 385-6017

9. Norfolk Regional Parole Office:

Norfolk Regional Center
 P.O. Box 1209
 1700 North Victory Rd.
 Norfolk, NE 68702-1209
 (402) 370-3136 or (402) 370-3539
 FAX: (402) 370-4332

10. McCook Regional Parole Office:

Work Ethic Camp
 P.O. Box 1150
 2309 North Highway 83
 McCook, NE 69001
 (308) 345-8457



NDCS Programs and Community Services



Classification and Records Administrator
Kyle Poppert 402-479-5750

Upon admission to the Nebraska Department of Corrections, the Records Office of the receiving facility (Diagnostic & Evaluation Center for men, the Nebraska Correctional Center for Women or the Nebraska Correctional Youth Facility for male youth adjudicated as adults) creates an "institution" inmate file. This file is maintained on active status throughout the entire period of incarceration. Upon discharge, the file is transferred to the Central Records Office for permanent storage and microfilming in compliance with the Department's Records Retention Schedule.

Per Nebraska Revised Statute 83-178, the contents of the inmate file are confidential. However, limited information is a matter of public record and may be released to the public upon request. Public Information concerning inmates is also available through the Department's Web Site:<http://www.corrections.state.ne.us/>

Along with the "institution" inmate file, a Central Office Inmate file is also created in accordance with Nebraska Revised Statute 83-1,100. This file is similar to the "institution" file maintained by the institution Records Office and is also confidential in accordance with the Statutes cited herein. The Board of Parole and its staff use this file to assist in carrying out the duties of that agency. The Central Office Departmental staff also uses this file to assist them in the routine decision making functions of those positions.

Along with the "hard copy" inmate file, an automated inmate record is maintained on a computerized Correctional Tracking System (CTS). The data maintained on this computerized system also falls under the guidelines of the confidentiality statutes cited above.

INMATE CLASSIFICATION

Inmate classification is a system for identifying inmates' needs and characteristics, and matching them with the appropriate physical security, supervision and programming. This is an ongoing process utilizing all available information, and endeavoring to base decisions on objective criteria. The classification system seeks to: assign each inmate to the least restrictive environment appropriate to maintaining public confidence and safety; facilitate the timely movement of inmates through the correctional system; provide for the assignment, continuation, and removal of inmates from Administrative Segregation status; identify inmate needs and recommend program involvement to meet those needs; and assure the most difficult classification decisions are made at the highest level of authority within the Department.

PROGRAMS ADMINISTRATOR Layne Gissler 402-479-5723

INTERSTATE CORRECTIONS COMPACT

Under the provisions of the Interstate Corrections Compact, the Nebraska Department of Correctional Services has entered into agreements with forty (40) other states.

This provides Nebraska inmates the opportunity to request to serve their Nebraska sentence in one of those states. Reciprocal inmates from other states may then be accepted in return.

Interstate transfers may be approved for a number of reasons, but are generally arranged to enable an inmate to be closer to family and maintain family ties. As of June 30, 2009, there were 20 Nebraska inmates serving their sentences in other states, and 18 inmates from other states serving their sentences in Nebraska.



NDCS Programs and Community Services



PROGRAMS ADMINISTRATOR
Layne Gissler 402-479-5723

EDUCATION

The Department implemented a self operating special purpose school district effective January, 2008. This has been a successful transition from the previous educational provider, Metropolitan Community College. All educational programming is provided by NDCS. Instruction is made available to inmates at a time when the majority can take advantage of the programs and, whenever possible, are designed to allow inmates to enter at any time and to proceed at a self-paced rate.

Education services are typically delivered through a Learning Center which is staffed by teachers who are certified by the Nebraska Department of Education. Educational staff work together as a team to provide an integrated program of educational offerings and services designed to provide individual inmates those specific educational opportunities most used and relevant to their futures. These options include assessment, literacy instruction, English as a Second Language (ESL), Adult Basic/General Education Development (ABE/GED) and life skills/pre-release courses. Offerings are delivered in a variety of formats including traditional classroom lecture/discussion, individualized computer-assisted learning, individualized tutoring. The Test of Adult Basic Education (TABE) is used to test achievement levels of inmates upon entry into the ABE/GED program, enabling staff to provide appropriate placement, and periodically on an individual basis to assess progress. The BEST test is used to assess ESL students

SELF-BETTERMENT GROUPS

Opportunities for self-betterment are available to inmates, but vary depending upon the institution. Clubs, support groups, and cultural awareness organizations include: Sertoma, Toastmasters, Stamp Club, Veterans, Alcoholics Anonymous, Narcotics Anonymous, 7th Step (a release preparation group), Harambee (African Americans), Mexican Awareness Through Association (MATA), and Native American Spiritual and Cultural Association (NASCA).

VOLUNTEER SERVICES

Volunteers assist in providing a variety of services to inmates through clubs, education, religious activities, and self-betterment groups. Additionally, a large number of inmates' family members and friends offer their time sponsoring inmates on furloughs and passes into the community.

LIBRARY SERVICES

The Nebraska Department of Corrections maintains eight correctional libraries. Library services are available to all inmates and assist in meeting their educational, recreational and therapeutic needs. Inmates may request books and other resources from the interlibrary loan program. Additionally, computer reference centers are available as well as online or CD-Rom based legal resources. The NDCS maintains eight correctional libraries.

To ensure compliance, law library services provide inmate access to the courts. Services are available on a daily basis, including evenings and weekends.



NDCS Programs and Community Services



Reentry Program

Utilizing a comprehensive form of case management, NDCS focuses on issues including substance abuse, mental health, housing, employment, education, mentoring, transportation, criminal thinking, and parenting/family reunification needs. We partner with community-based service providers including the Health and Human Services System, the Department of Labor, along with faith-based prison ministries and other social service entities. NDCS partnered with Christian Heritage and secured a grant from the National Fatherhood Initiative to facilitate the successful family reunification program, InsideOut Dads, within our facilities. Additionally, through collaboration with Heartland Reentry Aftercare, inmates who are transitioning back into the community are partnered with a support group to help them be successful in the community. Successful reintegration of offenders back into society is our objective. NDCS believes forging these partnerships with the community best serves the interest of all Nebraskans.

INMATE RISK & NEEDS ASSESSMENTS

Currently the Nebraska Department of Correctional Services utilizes four Risk & Needs Assessment instruments.

**Institutional
Community**

identifies appropriate inmates for the Reentry Program, provides information to the Parole Board for consideration prior to being placed on parole.

Community re-assessments

provides information to Adult Parole Administration while an inmates is participating on parole.

Aggression / Vulnerable

identifies inmates who may be a risk to other inmates or staff and those inmates who may be at risk from other inmates.

These assessment instruments are valuable in aiding staff in appropriate identification for program and parole participation, institutional security risk and discharge planning.

Inmate Transportation & Extradition Terry Ewing, Administrator 402-479-5705

The Special Services Unit was established in 1983. At that time primary duties were to return Parole Absconders and Escapes to the institution. Over the years the duties have expanded to include Detainers, Warrants of Arrest, Prisoner Transportation, Inmate Calling System, Teletype Services, Coordination of Court Transport Orders Acquisition of Radio Equipment and Radio Communication Licensing. In addition to the Department of Correctional Services duties, the Special Services Unit provides administrative support to the Governor's Office in reviewing and processing Governor's Warrants in the requisition of wanted fugitives.

TRANSPORTATION

The Transportation Unit employs three Warrant and Extradition Officers who work closely with local, state and federal agencies. Their duties include the return of Escapees, Parole Absconders and Parole Violators, Interstate Transfers of Inmates, Institutional Transfers, Transporting Parolees for Revocation Hearings, Detainer Service, Waivers of Extradition, and notification of inmate release dates to agencies who have lodged detainers.

DETAINERS/WARRANTS/TRIAL REQUESTS

The Special Services Unit administrator serves as the central administrator acting under the supervision of the department director in implementing the Interstate Agreement on Detainers (IAD). The IAD is a compact comprising of 48 states, the District of Columbia and the United States government. It provides for the administrative transfer of prisoners who are wanted by other states for disposition of untried criminal charges. Within the State of Nebraska, disposition of untried charges pending in county and local jurisdictions is handled according to procedures similar to those contained in the IAD. The purpose of the IAD and the intrastate Disposition of Untried Charges is to provide a process by which prisoners and prosecutors may initiate steps to resolve outstanding criminal charges. Provisions for speedy disposition help to alleviate uncertainties that slow programming and rehabilitative opportunities for prisoners within the correctional system.



Educational Programming

The Nebraska Department of Correctional Services offers educational programming at each correctional site based on the specific need of the population and availability of space at that site.

The general rule for teacher/student ratio is one teacher for every fifteen students. Most sites offer Job Skills, Parenting, Life Skills, General Education, Adult Basic Education, English as a Second Language, and correspondence study.

OMAHA CORRECTIONAL CENTER – (OCC)

ESL, ABE/GED, Parenting*, Pre-Release, Intro. to computers, Job Skills and College Correspondence Courses.

COMMUNITY CORRECTIONAL CENTER – OMAHA – (CCC-O)

ABE/GED

Staffing for OCC & CCC-O consist of 1 full-time lead teacher and 4 full-time endorsed teachers.

NEBRASKA CORRECTIONAL YOUTH FACILITY - (NCYF)

ESL, ABE/GED, Parenting*, College Correspondence Courses, Job Skills, and Food Service job training.

Staffing for NCYF consist of 1 full-time Principal, 4 full-time endorsed teachers and .5 school Liaison.

All high school students at this correctional site are required to attend school six hours per day Monday through Thursday. ABE and GED students attend 2 to 6 hours of classes Monday through Thursday based upon the number of tests they need to complete. All testing is done on Friday. Special population groups meet on Fridays.

TECUMSEH STATE CORRECTIONAL INSTITUTION - (TSCI)

ESL, ABE/GED, Parenting*, Intro to Computers, Job Skills and College Correspondence Courses.

Staffing for TSCI consists of 1 full-time lead teacher and 4 full-time endorsed teachers.

LINCOLN CORRECTIONAL CENTER - LINCOLN (LCC)

ESL, ABE/GED, Parenting*, Intro to Computers, Job Skills, and College Correspondence Courses.

COMMUNITY CORRECTIONAL CENTER - LINCOLN (CCC-L)

ABE/GED and ESL

Staffing for LCC and CCC-L consist of 3 full-time endorsed teachers and 1 lead teacher. One teacher is assigned to test all new commitments at DEC as well as verify diplomas, and enter data into web suite.

NEBRASKA STATE PENITENTIARY - (NSP)

ESL, ABE/GED, Parenting*, Intro to Computers, Job Skills and College Correspondence Courses.

Staffing for NSP consist of 1 full-time lead teacher and 4 full-time endorsed teachers.



NEBRASKA CORRECTIONAL CENTER FOR WOMEN - (NCCW)

ESL, ABE/GED, Parenting*, Intro to Computers, Job Skills and College Correspondence Courses.

Staffing for NCCW consists of 1 lead teacher and 2.75 full-time endorsed teachers.

WORK ETHIC CAMP – McCOOK - (WEC)

ESL, ABE/GED, Parenting*, Intro to Computers, and Job Skills.

Staffing for WEC consists of 1 full-time lead teacher and 1 full-time endorsed teacher.

The Youthful Offender Program is a grant funded program which allows eligible inmates to participate in college courses. This is offered with assistance of the University of Nebraska-Omaha.

Educational Programming Legend:

ESL-English as Second Language

ABE/GED-Adult basic Education

CCC-L-Community Corrections Center-Lincoln

CCC-O-Community Corrections Center-Omaha

NSP-Nebraska State Penitentiary

LCC-Lincoln Correctional Center

WEC-Work Ethic Camp

OCC-Omaha Correctional Center

NCYF-Nebraska Correctional Youth Facility

NCCW-Nebraska Correctional Center for Women

TSCI-Tecumseh State Correctional Institution

* Parenting classes may be accomplished through the assistance of trained volunteers.



The Deputy Director of Health Services is responsible for the oversight of the following areas.

Medical and Dental Services

Mental Health

Substance Abuse



Deputy Director Randy Kohl joined the Nebraska Dept. of Correctional Services in Oct. 2001

Deputy Director Kohl received his MD from UNMC and is residency trained in Family Medicine.



A. DESCRIPTION OF ACTIVITIES

Health Services are provided at the Nebraska Department of Correctional Services (NDCS) adult facilities for all inmates under the jurisdiction of NDCS. The mission of Health Services is to ensure that all inmates receive services designed to maintain good health. This is accomplished by providing a wide range of health services including mental health and substance abuse services. Due to the nature of the health care delivery system, medical staff provides inpatient and out-patient services through an integrated medical, mental health, psychiatry and substance abuse team approach.

The NDCS has three hospitals located at the following institutions: Nebraska State Penitentiary – twelve (12) beds; Diagnostic and Evaluation Center – eight (8) beds and the Tecumseh State Correctional Institution (TSCI) – ten (10) beds. In addition, the NDCS has medical clinics located at the following institutions: Nebraska State Penitentiary (NSP), Diagnostic & Evaluation Center (DEC), Tecumseh State Correctional Institution (TSCI), Lincoln Correctional Center (LCC), Omaha Correctional Center (OCC), Community Correction Center-Omaha (CCC-O), Community Corrections Center-Lincoln (CCC-L), Nebraska Correctional Center for Women (NCCW), Nebraska Correctional Youth Facility (NCYF) and Work Ethic Camp (WEC). All hospitals are licensed by the Department of Health and Human Services and fully comply with all requirements imposed by that department.

Mission

The Health Services Department of the Nebraska Department of Correctional Services provides humane, comprehensive, and integrated health care; including program opportunities consistent with the standards of quality and scope of services found in the community to promote the health and well being of those individuals placed in our custody.

Vision

The Health Services Department strives to continually improve the health of the individual placed in our custody by developing integrated delivery systems that efficiently provide a continuum of needed, accessible and quality health services.

Values

Excellence:

The Health Services Department believes in fostering excellence through

- continuous quality improvement
- cost efficiency, effectiveness, and appropriate utilization of resources
- Flexibility
- open communication
- recruiting and retaining high quality staff
- cooperative partnerships and teamwork
- ownership and commitment
- diversity

Service:

The Health Services Department believes in delivering services:

- responsively
- with care and compassion
- in a seamless continuum
- in an efficient and effective manner
- in partnership with community resources
- through holistic and preventative philosophies
- which promote rehabilitation and re-entry into society
- Which encourage inmates to share responsibility in their health care and well-being



Personal and Professional Growth:

The Health Services Department believes that personal and professional growth entails:

- > Building and expanding knowledge, skills, and abilities through educational and training opportunities
- > Developing leadership potential
- > Fostering accountability

Credibility:

The Health Services Department believes that credibility requires:

- > Reliable, consistent service
- > The community standard of care
- > Quality services
- > Professionalism
- > Integrity

B. GOALS AND OBJECTIVES

- To oversee health services of all inmates
- To operate in an efficient and effective manner in an integrated health care delivery system
- To achieve and maintain accreditation and licensure for all of our facilities and institutions
- To promote quality assessment and improvement
- To promote communication and dialogue among staff, inmates and those community resources involved in the care of our patients
- To recruit, train and retain qualified staff
- To provide a secure and safe environment

C. PERFORMANCE AND EVALUATION MEASURES

- Accreditation/ACA audits every three years
- Annual internal ACA audits
- Department of Health and Human Services hospital licensure
- Clinical Laboratory Improvement Amendments (CLIA)
- Department of Health inspections
- Quarterly health authority meetings
- Monthly and annual statistical and financial reports
- Ongoing care evaluation

SERVICES PROVIDED

- All routine health care, including preventative care
- Mental health treatment
- Substance abuse treatment
- Inpatient primary and secondary care
- Chronic care clinics
- Specialty clinics
- Diagnostic radiology
- Laboratory
- Optometry, including dispensing of eye ware
- Physical and speech therapy
- Audiology
- Patient education
- Medical records
- Dental
- Dietary
- Pharmacy
- Medical supply



NDCS INSTITUTIONAL PROGRAMS AND SERVICES BEHAVIORAL HEALTH PROGRAMMING/SERVICES

Behavioral Health

NDCS Behavioral Health emphasizes treatment services for high risk, high need populations. The primary focus of Behavioral Health is to provide services to inmates with major mental illness. Other priority populations include violent offenders, sex offenders, and substance use disorders. Clinical review teams make specific recommendations for treatment interventions for these core groups.

Mental Health Services:

Mental Health offers a wide range of services and programs to address the mental health needs of high risk offenders with an emphasis on those with major mental illness. The services include assessment and evaluation, residential and outpatient treatment programs, and crisis intervention.

Residential Programs:

The Mental Health Unit (MHU) provides residential treatment services to inmates with major mental illness or severe social/developmental impairment. Program goals include learning about and coping with major mental illness or social deficits and improving coping skills with the goal of transitioning to general population. The length of this program varies depending on needs and progress in treatment.

The Inpatient Healthy Lives Program (IHeLP) provides treatment to inmates who are at the highest risk for sexual re-offense. The program uses materials and assignments in a group therapy setting. This is an intensive 18 to 24 months program, though individual treatment time varies based on the needs and progress in treatment.

Outpatient Treatment Services:

Anger-Violence Programming – Programming is offered to high risk inmates with a history of violence. Programming includes anger management which provides instruction and practice on basic anger control strategies. The Violence Reduction Program (VRP) is an empirically validated approach to intervening with higher risk instrumentally violent offenders.

Outpatient Healthy Lives Program (oHeLP) – Treatment is offered to those inmates who are assessed to be at a relatively higher risk to sexually reoffend. Participants in oHeLP work through materials and assignments in group therapy. oHeLP takes about one year to complete.

Bibliotherapy Healthy Lives Program (bHeLP) – Treatment is offered to those inmates assessed to be at low risk to sexually reoffend, relative to other sex offenders. Participants in bHeLP work at their own pace on materials provided by the therapist. bHeLP takes several months to complete.

Continuing Care – Continuing Care is for those individuals who have completed the recommended sex offender treatment program. People in the Continuing Care program work in a group setting with peers and therapists to address treatment needs as they arise.

Psychological Services- Psychological evaluations are completed based on Unit Staff or Parole Board referral.

PREA-Related Services-Mental Health Staff assist with the provision of assessment and treatment services for offenders identified as a high risk for predatory behaviors and offenders who are at risk for victimization.

Other Services- Crisis management services are also available as needed.

Substance Abuse Services:

Substance abuse offers a wide range of treatment services to address the needs of offenders who have substance abuse or substance dependence issues. Services include residential and non-residential treatment and assessment of substance-related problems. Substance abuse is in process of expanding its current long-term residential treatment beds from about 236 to about 440.



Residential Programs:

DCS maintains over 390 residential treatment beds at 4 separate facilities at this time. Inmates assigned to these programs have been identified as having serious substance abuse issues. The residential program generally lasts about 10 months. Short-term residential treatment is also offered at one facility.

Non-residential Programs:

This service is available for offenders who are not eligible for the residential program who have lower level substance abuse issues and is available at 3 facilities. The program lasts up to 6 months.

Psychiatric Services:

Psychiatry services are offered to provide pharmacological treatment to inmates with mental illness. All of the institutions are served by Staff Psychiatrists, a Psychiatric Nurse Practitioner, or Consulting Psychiatrist who prescribes and manages psychiatric medications.

Additional Behavioral Health Services

Behavioral Health contributes to DCS in several other important ways. First, multiple grants are administered through Behavioral Health. Second, Behavioral Health actively provides numerous trainings for its professional staff. Recent trainings have focused on areas including psychopathology, sex offender assessment and treatment, and substance abuse treatment. Third, Behavioral Health conducts audits at each institution on an annual basis to promote quality improvement.

Behavioral Health Programming Offered by Institution

Community Corrections Center-Lincoln (CCC-L):

- *Follow-up psychiatric services
- *Crisis intervention
- *bHeLP sex offender treatment
- *Access to community mental health services
- * Access to community substance abuse services

Community Corrections Center-Omaha (CCC-O):

- *Follow-up psychiatric services
- *Crisis intervention
- *bHeLP sex offender treatment
- *Access to community mental health services
- *Access to community substance abuse services
- *Continuing care sex offender treatment

Diagnostic and Evaluation Center (DEC):

- *Psychiatric services
- *Crisis intervention
- *Mental health screening/assessment and referral
- *Substance abuse screening/assessment and referral

Lincoln Correctional Center (LCC):

- *Psychiatric services
- *Crisis intervention
- *Mental Health Unit
- *Anger Management
- *Inpatient Healthy Lives Program
- *Non-residential substance abuse treatment
- *bHeLP (bibliotherapy Healthy Lives Program)
- *Continuing care sex offender treatment



Nebraska Correctional Center for Women (NCCW):

- *Psychiatric services
- *Crisis intervention
- *Mental health screening/assessment and referral
- *Substance abuse screening/assessment and referral
- *Anger management
- *Residential substance abuse treatment
- *Non-residential substance abuse treatment
- *Parole violator substance abuse treatment
- *bHelp
- *oHeLP (outpatient Healthy Lives Program)

Nebraska State Penitentiary (NSP):

- *Psychiatric services
- *Crisis intervention
- *Anger management
- *Bibliotherapy Healthy Lives Program (for sex offenders)
- *Outpatient Healthy Lives Program (for sex offenders)
- *Violence Reduction Program (VRP)
- *Residential substance abuse treatment
- *Non-residential substance abuse treatment
- *Parole violator substance abuse treatment

Omaha Correctional Center (OCC):

- *Psychiatric services
- *Crisis intervention
- *Anger management
- *Bibliotherapy Healthy Lives Program (for sex offenders)
- *Outpatient Healthy Lives Program (for sex offenders)
- *Outpatient mood and anxiety groups
- *Residential substance abuse treatment
- *Non-residential substance abuse treatment

Tecumseh State Correctional Institution (TSCI):

- *Psychiatric services
- *Crisis intervention
- *Anger management
- *Residential substance abuse treatment
- *Non-residential substance abuse treatment
- *bHeLP

Work Ethic Camp (WEC):

- *Psychiatric services
- *Crisis management
- *Outpatient mental health treatment
- *Short-term residential substance abuse treatment

Nebraska Correctional Youth Facility (NCYF):

- *Psychiatric services
- *Crisis intervention
- *Mental health screening/assessment and referral
- *Substance abuse screening/assessment and referral
- *Anger/violence programming
- *Non-residential substance abuse treatment



Deputy Director of Cornhusker State Industries



The Deputy Director of Cornhusker State Industries is responsible for the oversight of the following areas.

Cornhusker State Industries:

- 4 wood shops
- 2 sewing shops
- 2 laundry facilities
- Data Entry, Braille, Chemicals, License Plates, Metal and Print Shops
- Private Industry shops
- Fleet of 8 delivery trucks

Federal Surplus Property:

- Screen, receive and distribute federal surplus property to eligible state & local governmental subdivisions and certain non-profit agencies
- Administers Law Enforcement (1033 & 1122) programs
- Administers an aviation fuel program so Nebraska's law enforcement can obtain federally discounted prices for fuel



Deputy Director John McGovern joined the Nebraska Department of Correctional Services in March 2003.

John is responsible for the overall management of Cornhusker State Industries and the Federal Surplus Program.

John has significant private sector management experience in general management, sales and marketing, manufacturing, quality, administration, business development and services industries.

John received his undergraduate degree from the University of Toledo and did post-graduate work at both the University of Toledo and Bowling Green State University.



Cornhusker State Industries



CORNHUSKER STATE INDUSTRIES
800 PIONEERS BLVD.
LINCOLN, NE 68502
402-471-4597 OR 1-800-348-7537

CSI Management Team

John McGovern
Steve Neff
Jim Brebner
Mike Martin
Jeremy Elder
Kate Severin
Scott Roberts
Jim Oliver
Paul Norrid
Diane Poppert
Brad Frandsen

Deputy Director/General Mgr.
Assistant Administrator
Assistant Administrator
Budget Officer III
Manufacturing Manager
Sales & Marketing Manager
Quality Assurance
Inventory Control
ACA/HR/Safety Manager
Warehouse Manager
Federal Surplus Property Manager

CSI—WE BUILD OPPORTUNITY

In FY2009, CSI completed initial phases of architectural design for the construction of new production buildings at OCC and TSCI. The expansion of these facilities will help CSI position itself to meet the challenges of future economic trends. CSI is also fortunate to be able to take advantage of the significant construction discounts offered by the current economic climate estimated at 20%. The expansion plans will help CSI offer more diversity in product lines such as park furniture and accessories; provide additional products and services to the department including canteen bags, sweats and foot lockers; and continue to pursue PIECP opportunities to provide real world working experience to a larger number of inmates. CSI employed an average of 554 inmates in FY2009 within traditional shops and private venture operations resulting in approximately 745,000 hours of inmate labor. Private venture contributions returned to the community in the form of state and local taxes, victim reparations, inmate room and board, family support, and release savings of almost \$498,000 in FY2009. CSI also processed nearly 6.5 million pounds of laundry for tax supported and non-profit end users.

As CSI entered FY2010, operations exploded with activity as production ran at full capacity in all four wood shops to keep up with the orders of a single customer; the Elmwood-Murdock Public School District. They placed furniture orders that exceeded \$500,000 to remodel their entire high school and elementary school campuses. It proved to be the largest single furniture order in CSI history. In addition, CSI broke ground at OCC for building expansion that is expected to be completed by the spring of 2010. At that time, ground breaking is anticipated to take place at TSCI for a similar expansion.

This past summer, CSI was finally able to see efforts to offer medical transcription services come to fruition as the NCCW Data Entry Shop developed a partnership with the Beatrice State Development Center to provide transcription services. This new business effort promises to be an ever expanding service line for CSI into the future. As the calendar year ended, CSI added two additional work crew details that have been assigned to the Nebraska State Office Building. They will provide cleaning services at a great savings to the State.

CSI also looks forward to partnering with the University of Nebraska-Lincoln in the summer of 2010 as the National Special Olympics are being hosted at the UNL campus. CSI will again provide laundry services for all of the UNL summer programs which will include the Special Olympics.

To further enhance the image of CSI to the expanding and varied customer base, staff and inmates installed new carpet throughout the Administration building. The large conference room continues to attract increasing interest and is being widely used as a multi-agency resource featuring fine CSI products throughout.

For more information about CSI's multiple product lines, programs, and history, please visit our showroom at 800 Pioneers Blvd, call us at 800-348-7537, or browse our website at www.corrections.state.ne.us/csi

Federal Surplus Property Brad Frandsen, Manager

Federal Surplus Property's (FSP) purpose is to screen, receive, and distribute surplus property to eligible state and local government subdivisions and certain non-profit agencies. The FSP Manager is appointed by the Governor of the State of Nebraska to administer and coordinate the transfer of excess federal property to Law Enforcement Agencies within the State of Nebraska. Service charges received from eligible donees and Law Enforcement Agencies (LEA's) make FSP self-supporting through its revolving fund, while still providing significant tax savings to the donees & LEA's.

The Nebraska Department of Correctional Services, through Cornhusker State Industries (CSI), operates the agency's program.



Statistical Summary



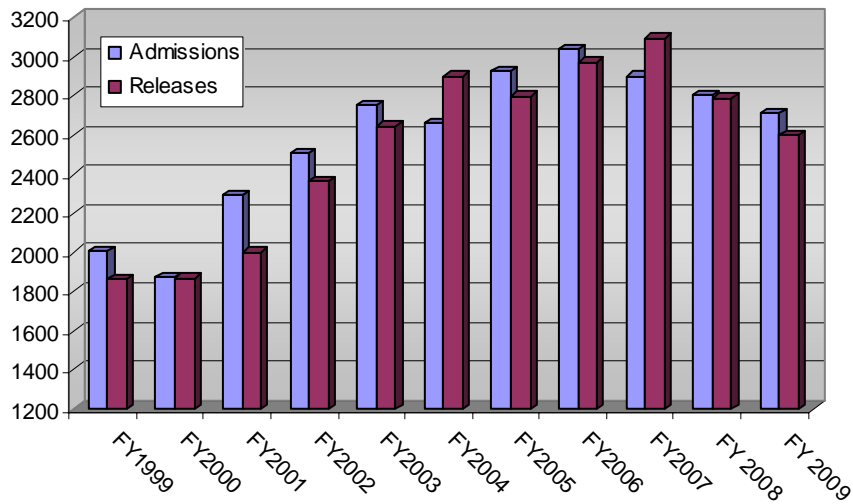


Total Admissions

FY	New Sentenced			Revocations			Evaluator/Safekeeper/WEC			Grand Total
	Males	Females	Total	Males	Females	Total	Males	Females	Total	
1999	1456	178	1634	222	22	244	113	16	129	2007
2000	1303	134	1437	243	27	270	140	27	167	1874
2001	1607	220	1827	199	22	221	196	47	243	2291
2002	1614	246	1860	212	17	229	331	85	416	2505
2003	1676	239	1915	199	23	222	467	149	616	2753
2004	1698	243	1941	223	30	253	384	84	468	2662
2005	1774	309	2083	307	33	340	403	98	501	2924
2006	1992	336	2328	250	33	283	338	90	428	3039
2007	1871	308	2179	226	35	261	374	88	462	2902
2008	1845	306	2151	223	23	246	325	79	404	2801
2009	1815	253	2068	252	44	296	285	60	345	2709

Total Releases

FY	Paroled to Nebraska			Discharges			Evaluator/Safekeeper/WEC			Grand Total
	Males	Females	Total	Males	Females	Total	Males	Females	Total	
1999	593	85	678	940	100	1040	129	18	147	1865
2000	563	103	666	961	91	1052	128	22	150	1868
2001	642	80	722	1090	83	1173	172	48	220	2003
2002	665	107	772	1109	126	1235	281	77	358	2365
2003	626	111	737	1194	153	1347	430	129	559	2643
2004	1015	152	1167	1080	134	1214	419	102	521	2902
2005	953	133	1086	1079	150	1229	396	89	485	2800
2006	873	161	1034	1265	226	1491	353	91	444	2969
2007	1007	174	1181	1251	189	1440	374	97	471	3092
2008	842	186	1028	1171	176	1347	337	77	414	2789
2009	848	130	978	1104	174	1278	277	65	342	2598





Average Monthly Population (Fiscal Year)



Facility	1999	2000	2001	2002	2003	2004	2005	2006	2007	2008	2009
Nebraska State Penitentiary	1122	1191	1193	1198	1014	1091	1149	1163	1140	1141	1066
Lincoln Correctional Center	516	507	522	511	452	462	481	493	492	472	475
Diagnostic & Evaluation Unit	308	276	392	394	366	299	281	390	354	334	302
Omaha Correctional Center	700	678	697	713	645	580	588	562	595	616	680
Hastings Correctional Center#	180	180	181	173							
Community Corrections	394	387	387	385	404	428	425	491	547	540	537
NE Correctional Treatment Center**	89	87	88	86							
NE Correctional Youth Facility +	48	63	64	74	71	66	78	97	94	85	98
Nebraska Center for Women	198	192	225	273	274	254	281	311	318	294	273
Tecumseh State Correctional Institution ^				296	794	849	801	853	858	906	948
Total Average Monthly Population	3548	3561	3747	3838	4037	4029	4086	4360	4398	4388	4379
% Change	+6.3 %	+0.4 %	+5.2 %	+2.4 %	+5.2 %	-0.2%	+1.0%	+6.7 %	+0.9 %	-0.2%	-0.2 %
Work Ethic Camp~			18	48	77	85	75	75	70	79	103
Adult Parole	587	566	505	560	624	695	767	710	754	822	913
Hastings Correctional Center BICE Holding Center#					134	128					
Total	4142	4127	4271	4446	4871	4938	4928	5145	5222	5289	5395
% Change	+4.8 %	-0.4%	+3.5 %	+4.1 %	+9.6 %	+2.3%	- 0.2%	+4.4 %	+1.5 %	+1.3 %	+1.0 %

**The Nebraska Correctional Treatment Center opened in August 1994, closed June 2002.

+ The Nebraska Correctional Youth Facility opened in August, 1998

~ The Work Ethic Camp opened in April, 2001.

^ Tecumseh State Correctional Institution opened December, 2001.

Hastings Correctional Center became a BICE Holding Center as of June 2002, closed June 2004.

Adult Female Total Population - FY2009 Statistical Reports

Current Age

Age	Number	Percent	Cumulative Number	Cumulative Percent
16	1	0.3%	1	0.3%
17	1	0.3%	2	0.5%
19	4	1.1%	6	1.6%
20 - 24	56	15.3%	62	16.9%
25 - 29	72	19.6%	134	36.5%
30 - 34	55	15.0%	189	51.5%
35 - 39	49	13.4%	238	64.9%
40 - 44	45	12.3%	283	77.1%
45 - 49	46	12.5%	329	89.6%
50 - 54	31	8.4%	360	98.1%
55 - 59	4	1.1%	364	99.2%
60 and Over	3	0.8%	367	100.0%

Average Age

Current Age	# of Inmates
32.22	367

Race

Race	Number	Percent
White	236	64.3%
Black	71	19.3%
Hispanic	27	7.4%
Native American	23	6.3%
Other	10	2.7%
Grand Total	367	100.0%

Commitment Area

Region	Number	Percent
Metro Omaha	132	36.0%
Metro Lincoln	76	20.7%
Southeast	35	9.5%
Northeast	37	10.1%
South Central	57	15.5%
North Central	1	0.3%
Panhandle	26	7.1%
Out of State	2	0.5%
Data Unavailable	1	0.3%
Grand Total	367	100.0%

Current Custody

Custody	Number	Percent	Cumulative Number	Cumulative Percent
MAX-Restricted	63	17.2%	63	17.2%
MED-Restricted	78	21.3%	141	38.4%
MIN-Dir Con Supr	120	32.7%	261	71.1%
MIN-Intrmt Supr	16	4.4%	277	75.5%
COMM-Detail	68	18.5%	345	94.0%
COMM-Wrk / Ed Rls	22	6.0%	367	100.0%

Record Center

Record Center	Number	Percent
NCW	268	73.0%
CCL	71	19.3%
CCO	15	4.1%
WEC	13	3.5%
Grand Total	367	100.0%

Admission Type

Admission Type	Number	Percent
First-Time	282	76.8%
Multiple	82	22.3%
Interstate Trans	2	0.5%
Unavailable	1	0.3%
Grand Total	367	100.0%

Jurisdiction

Jurisdiction	Number	Percent
Nebraska	365	99.5%
Interstate Transfer	2	0.5%
Grand Total	367	100.0%

Adult Female Total Population - FY2009 Statistical Reports

Previous Parole

Parole	Number	Percent
NO	361	98.4%
YES	6	1.6%
Grand Total	367	100.0%

Marital Status

Marital Status	Number	Percent
SINGLE	181	49.3%
MARRIED	100	27.2%
DIVORCED	70	19.1%
DATA UNAVAILABLE	6	1.6%
SEPARATED	5	1.4%
WIDOWED	5	1.4%
Grand Total	367	100.0%

Religion

Religion	Number	Percent
CHRISTIAN	92	25.1%
CATHOLIC	75	20.4%
NONE	58	15.8%
BAPTIST	56	15.3%
LUTHERAN	25	6.8%
PROTESTANT	9	2.5%
METHODIST	7	1.9%
MORMON/LDS	7	1.9%
PENTECOSTAL	7	1.9%
PRESBYTERIAN	7	1.9%
NATIVE AMERICAN	6	1.6%
WICCAN	5	1.4%
MUSLIM/ISLAM	2	0.5%
SEVENTH DAY ADVENT	2	0.5%
ASSEMBLY OF GOD	1	0.3%
BEREAN	1	0.3%
ISLAM/MUSLIM	1	0.3%
JEHOVAHS WITNESS	1	0.3%
Unknown	5	1.4%
Grand Total	367	100.0%

Avg Min & Max Sentence

(Life set to 10-year average of 18.17 Yrs)

Avg MIN Sentence Mo's	Avg MAX Sentence Mo's	# of Inmates
69.49	114.80	367

Average Length of Stay

Years	Months	Days	# of Inmates
2.45	29.43	895	367

Length of Stay in Institution

Month/Year	Number	Percent	Cumulative Number	Cumulative Percent
7 - 12 Months	88	24.0%	88	24.0%
13 - 18 Months	98	26.7%	186	50.7%
19 - 24 Months	53	14.4%	239	65.1%
25 - 30 Months	17	4.6%	256	69.8%
31 - 36 Months	39	10.6%	295	80.4%
37 - 42 Months	20	5.4%	315	85.8%
43 - 48 Months	4	1.1%	319	86.9%
49 - 54 Months	8	2.2%	327	89.1%
55 - 60 Months	5	1.4%	332	90.5%
5.01 - 6.00 Yrs	9	2.5%	341	92.9%
6.01 - 7.00 Yrs	3	0.8%	344	93.7%
7.01 - 8.00 Yrs	4	1.1%	348	94.8%
8.01 - 9.00 Yrs	4	1.1%	352	95.9%
9.01 - 10.00 Yrs	3	0.8%	355	96.7%
10.01 - 11.00 Yrs	3	0.8%	358	97.5%
11.01 - 12.00 Yrs	2	0.5%	360	98.1%
12.01 - 13.00 Yrs	1	0.3%	361	98.4%
14.01 - 15.00 Yrs	2	0.5%	363	98.9%
15.01 - 16.00 Yrs	1	0.3%	364	99.2%
Over 20 Years	3	0.8%	367	100.0%

Adult Female Total Population - FY2009 Statistical Reports

Most Serious Offense

Offense Arrest	Number	Percent
THEFT	56	15.3%
MANU/DIST/DEL/DISP OR POSS W/I	51	14.0%
POS CNTRL SUB EXCEPT MARIJUANA	39	10.7%
FORGERY	29	7.9%
DRIVING UNDER INFLUENCE/INJURY	23	6.3%
ROBBERY	19	5.2%
ASSAULT	18	4.9%
CHILD ABUSE	14	3.8%
BURGLARY	12	3.3%
MANSLAUGHTER	10	2.7%
BAD CHECKS	8	2.2%
ACCESSORY TO A FELONY	7	1.9%
MURDER 2ND DEGREE	7	1.9%
DRIVING UNDER REVOKED LICENSE	6	1.6%
DRIVING WHILE INTOXICATED	6	1.6%
MURDER 1ST DEGREE	6	1.6%
SEXUAL ASSAULT 1ST DEGREE	6	1.6%
VIOL OF FINANCIAL TRANS DEVICE	6	1.6%
SEXUAL ASSULT OF CHILD 1ST DEG	5	1.4%
ASLT PEAC OFCR/DCS EMP	4	1.1%
DLNG NARCOTICS/CNTRL SUBSTANCE	4	1.1%
AQUIRING CONT SUBSTNC BY FRAUD	3	0.8%
ESCAPE	3	0.8%
MOTOR VEHICLE HOMICIDE	3	0.8%
SEXUAL ASSAULT ON A CHILD	3	0.8%
ASSAULT BY A CONFINED PERSON	2	0.5%
CRIMINAL IMPERSONATION	2	0.5%
UNLAWFUL DISCHARGE OF FIREARM	2	0.5%
VULNERABLE ADULT ABUSE	2	0.5%
ARSON 3RD DEGREE	1	0.3%
ASSLT OFFICER USING MOTOR VEH	1	0.3%
CRIMINAL NON-SUPPORT	1	0.3%
CRIMINAL TRESPASS	1	0.3%
FALSE REPORTING	1	0.3%
LEAVE SCENE OF INJURY ACCIDENT	1	0.3%
OPERATE MOTOR VEH/AVOID ARREST	1	0.3%
POS OF OVER 1 LB. OF MARIJUANA	1	0.3%
POSS DEADLY WEAP BY FELON/FUG	1	0.3%
Grand Total	365	100.0%

Data Unavailable: 2

Most Serious Offense Category

Offense Category	# of Inmates	Percent
Drugs	98	26.8%
Theft	56	15.3%
Fraud	45	12.3%
Assault	41	11.2%
Motor Vehicle	40	11.0%
Homicide	23	6.3%
Robbery	19	5.2%
Sex Offenses	14	3.8%
Burglary	12	3.3%
Other	12	3.3%
Weapons	3	0.8%
Arson	1	0.3%
Morals	1	0.3%
Grand Total	365	100.0%

Data Unavailable: 2

Adult Female Total Population - FY2009 Statistical Reports

Minimum Sentence

Years	Number	Percent	Cumulative Number	Cumulative Percent
1.00 Yr or Less	48	13.1%	48	13.1%
1.01-2.00 Yrs	92	25.1%	140	38.1%
2.01-3.00 Yrs	59	16.1%	199	54.2%
3.01-4.00 Yrs	41	11.2%	240	65.4%
4.01-5.00 Yrs	23	6.3%	263	71.7%
5.01-6.00 Yrs	14	3.8%	277	75.5%
6.01-7.00 Yrs	10	2.7%	287	78.2%
7.01-8.00 Yrs	9	2.5%	296	80.7%
8.01-9.00 Yrs	6	1.6%	302	82.3%
9.01-10.00 Yrs	17	4.6%	319	86.9%
10.01-11.00 Yrs	2	0.5%	321	87.5%
11.01-12.00 Yrs	3	0.8%	324	88.3%
12.01-13.00 Yrs	5	1.4%	329	89.6%
14.01-15.00 Yrs	4	1.1%	333	90.7%
17.01-18.00 Yrs	1	0.3%	334	91.0%
18.01-19.00 Yrs	1	0.3%	335	91.3%
19.01-20.00 Yrs	6	1.6%	341	92.9%
Over 20 Years	17	4.6%	358	97.5%
Life	9	2.5%	367	100.0%

Maximum Sentence

Years	Number	Percent	Cumulative Number	Cumulative Percent
1.00 Yr or Less	15	4.1%	15	4.1%
1.01-2.00 Yrs	18	4.9%	33	9.0%
2.01-3.00 Yrs	48	13.1%	81	22.1%
3.01-4.00 Yrs	45	12.3%	126	34.3%
4.01-5.00 Yrs	57	15.5%	183	49.9%
5.01-6.00 Yrs	34	9.3%	217	59.1%
6.01-7.00 Yrs	17	4.6%	234	63.8%
7.01-8.00 Yrs	18	4.9%	252	68.7%
8.01-9.00 Yrs	4	1.1%	256	69.8%
9.01-10.00 Yrs	19	5.2%	275	74.9%
10.01-11.00 Yrs	3	0.8%	278	75.7%
11.01-12.00 Yrs	8	2.2%	286	77.9%
12.01-13.00 Yrs	4	1.1%	290	79.0%
13.01-14.00 Yrs	6	1.6%	296	80.7%
14.01-15.00 Yrs	6	1.6%	302	82.3%
15.01-16.00 Yrs	6	1.6%	308	83.9%
16.01-17.00 Yrs	1	0.3%	309	84.2%
17.01-18.00 Yrs	2	0.5%	311	84.7%
18.01-19.00 Yrs	3	0.8%	314	85.6%
19.01-20.00 Yrs	14	3.8%	328	89.4%
Over 20 Years	30	8.2%	358	97.5%
Life	9	2.5%	367	100.0%

Adult Male Total Population - FY2009 Statistical Reports

Current Age

Age	Number	Percent	Cumulative Number	Cumulative Percent
16	3	0.1%	3	0.1%
17	7	0.2%	10	0.2%
18	23	0.6%	33	0.8%
19	41	1.0%	74	1.8%
20 - 24	703	17.2%	777	19.0%
25 - 29	703	17.2%	1480	36.2%
30 - 34	606	14.8%	2086	51.1%
35 - 39	529	12.9%	2615	64.0%
40 - 44	409	10.0%	3024	74.0%
45 - 49	425	10.4%	3449	84.4%
50 - 54	318	7.8%	3767	92.2%
55 - 59	152	3.7%	3919	95.9%
60 and Over	166	4.1%	4085	100.0%

Average Age

Current Age	# of Inmates
33.16	4085

Race

Race	Number	Percent
White	2240	54.8%
Black	1099	26.9%
Hispanic	522	12.8%
Native American	183	4.5%
Asian	32	0.8%
Other	7	0.2%
Hawaiian / Pacific Islander	1	0.0%
Data Unavailable	1	0.0%
Grand Total	4085	100.0%

Commitment Area

Region	Number	Percent
Metro Omaha	1656	40.5%
Metro Lincoln	705	17.3%
Southeast	386	9.4%
Northeast	493	12.1%
South Central	533	13.0%
North Central	46	1.1%
Panhandle	232	5.7%
Out of State	17	0.4%
Data Unavailable	17	0.4%
Grand Total	4085	100.0%

Current Custody

Custody	Number	Percent	Cumulative Number	Cumulative Percent
MAX-Restricted	1276	31.2%	1276	31.2%
MED-Restricted	1138	27.9%	2414	59.1%
MIN-Dir Con Supr	1163	28.5%	3577	87.6%
MIN-Intrmt Supr	42	1.0%	3619	88.6%
COMM-Detail	269	6.6%	3888	95.2%
COMM-Wrk / Ed Rls	197	4.8%	4085	100.0%

Record Center

Record Center	Number	Percent	Cumulative Number	Cumulative Percent
NSP	1054	25.8%	1054	25.8%
TSC	948	23.2%	2002	49.0%
OCC	679	16.6%	2681	65.6%
LCC	485	11.9%	3166	77.5%
DEC	376	9.2%	3542	86.7%
CCL	286	7.0%	3828	93.7%
CCO	145	3.5%	3973	97.3%
NCY	88	2.2%	4061	99.4%
WEC	24	0.6%	4085	100.0%

Admission Type

Admission Type	Number	Percent
First-Time	2423	59.3%
Multiple	1632	40.0%
Interstate Trans	16	0.4%
Unavailable	14	0.3%
Grand Total	4085	100.0%

Jurisdiction

Jurisdiction	Number	Percent
Nebraska	4067	99.6%
Interstate Transfer	18	0.4%
Grand Total	4085	100.0%

Adult Male Total Population - FY2009 Statistical Reports

Previous Parole

Parole	Number	Percent
NO	3842	94.1%
YES	243	5.9%
Grand Total	4085	100.0%

Marital Status

Marital Status	Number	Percent
SINGLE	2431	59.5%
MARRIED	940	23.0%
DIVORCED	647	15.8%
WIDOWED	30	0.7%
DATA UNAVAILABLE	21	0.5%
COMMON LAW	8	0.2%
SEPARATED	7	0.2%
OTHER	1	0.0%
Grand Total	4085	100.0%

Most Serious Offense Category

Offense Category	# of Inmates	Percent
Sex Offenses	722	17.8%
Drugs	554	13.6%
Assault	548	13.5%
Homicide	478	11.8%
Robbery	396	9.7%
Burglary	335	8.2%
Theft	313	7.7%
Motor Vehicle	309	7.6%
Fraud	98	2.4%
Other	93	2.3%
Weapons	77	1.9%
Restraint	61	1.5%
Morals	58	1.4%
Arson	23	0.6%
Grand Total	4065	100.0%

Data Unavailable: 20

Average Length of Stay

Years	Months	Days	# of Inmates
4.72	56.62	1723	4085

Length of Stay in Institution

Month/Year	Number	Percent	Cumulative Number	Cumulative Percent
7 - 12 Months	797	19.5%	797	19.5%
13 - 18 Months	562	13.8%	1359	33.3%
19 - 24 Months	468	11.5%	1827	44.7%
25 - 30 Months	152	3.7%	1979	48.4%
31 - 36 Months	386	9.4%	2365	57.9%
37 - 42 Months	191	4.7%	2556	62.6%
43 - 48 Months	156	3.8%	2712	66.4%
49 - 54 Months	161	3.9%	2873	70.3%
55 - 60 Months	124	3.0%	2997	73.4%
5.01 - 6.00 Yrs	182	4.5%	3179	77.8%
6.01 - 7.00 Yrs	150	3.7%	3329	81.5%
7.01 - 8.00 Yrs	112	2.7%	3441	84.2%
8.01 - 9.00 Yrs	73	1.8%	3514	86.0%
9.01 - 10.00 Yrs	76	1.9%	3590	87.9%
10.01 - 11.00 Yrs	61	1.5%	3651	89.4%
11.01 - 12.00 Yrs	42	1.0%	3693	90.4%
12.01 - 13.00 Yrs	28	0.7%	3721	91.1%
13.01 - 14.00 Yrs	35	0.9%	3756	91.9%
14.01 - 15.00 Yrs	37	0.9%	3793	92.9%
15.01 - 16.00 Yrs	38	0.9%	3831	93.8%
16.01 - 17.00 Yrs	26	0.6%	3857	94.4%
17.01 - 18.00 Yrs	28	0.7%	3885	95.1%
18.01 - 19.00 Yrs	21	0.5%	3906	95.6%
19.01 - 20.00 Yrs	15	0.4%	3921	96.0%
Over 20 Years	164	4.0%	4085	100.0%

Avg Min & Max Sentence

(Life set to 10-year average of 18.17 Yrs)

Avg MIN Sentence Mo's	Avg MAX Sentence Mo's	# of Inmates
138.81	211.90	4085

Adult Male Total Population - FY2009 Statistical Reports

Minimum Sentence

Years	Number	Percent	Cumulative Number	Cumulative Percent
1.00 Yr or Less	281	6.9%	281	6.9%
1.01-2.00 Yrs	678	16.6%	959	23.5%
2.01-3.00 Yrs	355	8.7%	1314	32.2%
3.01-4.00 Yrs	350	8.6%	1664	40.7%
4.01-5.00 Yrs	246	6.0%	1910	46.8%
5.01-6.00 Yrs	158	3.9%	2068	50.6%
6.01-7.00 Yrs	99	2.4%	2167	53.0%
7.01-8.00 Yrs	151	3.7%	2318	56.7%
8.01-9.00 Yrs	60	1.5%	2378	58.2%
9.01-10.00 Yrs	291	7.1%	2669	65.3%
10.01-11.00 Yrs	37	0.9%	2706	66.2%
11.01-12.00 Yrs	110	2.7%	2816	68.9%
12.01-13.00 Yrs	25	0.6%	2841	69.5%
13.01-14.00 Yrs	58	1.4%	2899	71.0%
14.01-15.00 Yrs	120	2.9%	3019	73.9%
15.01-16.00 Yrs	43	1.1%	3062	75.0%
16.01-17.00 Yrs	34	0.8%	3096	75.8%
17.01-18.00 Yrs	56	1.4%	3152	77.2%
18.01-19.00 Yrs	14	0.3%	3166	77.5%
19.01-20.00 Yrs	166	4.1%	3332	81.6%
Over 20 Years	531	13.0%	3863	94.6%
Life	211	5.2%	4074	99.7%
Death	11	0.3%	4085	100.0%

Maximum Sentence

Years	Number	Percent	Cumulative Number	Cumulative Percent
1.00 Yr or Less	102	2.5%	102	2.5%
1.01-2.00 Yrs	143	3.5%	245	6.0%
2.01-3.00 Yrs	297	7.3%	542	13.3%
3.01-4.00 Yrs	298	7.3%	840	20.6%
4.01-5.00 Yrs	449	11.0%	1289	31.6%
5.01-6.00 Yrs	171	4.2%	1460	35.7%
6.01-7.00 Yrs	88	2.2%	1548	37.9%
7.01-8.00 Yrs	166	4.1%	1714	42.0%
8.01-9.00 Yrs	71	1.7%	1785	43.7%
9.01-10.00 Yrs	279	6.8%	2064	50.5%
10.01-11.00 Yrs	47	1.2%	2111	51.7%
11.01-12.00 Yrs	122	3.0%	2233	54.7%
12.01-13.00 Yrs	37	0.9%	2270	55.6%
13.01-14.00 Yrs	50	1.2%	2320	56.8%
14.01-15.00 Yrs	138	3.4%	2458	60.2%
15.01-16.00 Yrs	53	1.3%	2511	61.5%
16.01-17.00 Yrs	33	0.8%	2544	62.3%
17.01-18.00 Yrs	44	1.1%	2588	63.4%
18.01-19.00 Yrs	16	0.4%	2604	63.7%
19.01-20.00 Yrs	247	6.0%	2851	69.8%
Over 20 Years	926	22.7%	3777	92.5%
Life	297	7.3%	4074	99.7%
Death	11	0.3%	4085	100.0%

Parole Population - FY2009 Statistical Reports

Current Age

Age	Number	Percent	Cumulative Number	Cumulative Percent
19	5	0.5%	5	0.5%
20 - 24	109	10.7%	114	11.2%
25 - 29	174	17.0%	288	28.2%
30 - 34	178	17.4%	466	45.6%
35 - 39	125	12.2%	591	57.9%
40 - 44	143	14.0%	734	71.9%
45 - 49	136	13.3%	870	85.2%
50 - 54	84	8.2%	954	93.4%
55 - 59	43	4.2%	997	97.6%
60 and Over	24	2.4%	1021	100.0%

Average Age

Current Age	# of Inmates
34.48	1021

Race

Race	Number	Percent
White	665	65.1%
Black	200	19.6%
Hispanic	107	10.5%
Native American	38	3.7%
Asian	8	0.8%
Other	3	0.3%
Grand Total	1021	100.0%

Parole Indicator

In Out Codes	Number	Percent
Nebraska Parolees in Nebraska	654	64.1%
Nebraska Paroles to Other States	88	8.6%
Interstate Transfers	208	20.4%
Nebraska Paroled to Detainers	71	7.0%
Grand Total	1021	100.0%

Previous Parole

Parole	Number	Percent
NO	977	95.7%
YES	44	4.3%
Grand Total	1021	100.0%

Not including lifetime sex offenders = 114

Admission Type

Admission Type	Number	Percent
First-Time	500	49.0%
Interstate Trans	212	20.8%
Multiple	309	30.3%
Grand Total	1021	100.0%

Gender

Gender	Number	Percent
Male	887	86.9%
Female	134	13.1%
Grand Total	1021	100.0%

Parole Population - FY2009 Statistical Reports

Most Serious Offense Category

Offense Category	# of Inmates	Percent
Drugs	308	30.2%
Theft	134	13.1%
Burglary	103	10.1%
Assault	90	8.8%
Motor Vehicle	90	8.8%
Robbery	82	8.0%
Fraud	53	5.2%
Homicide	42	4.1%
Sex Offenses	41	4.0%
Other	35	3.4%
Weapons	20	2.0%
Morals	10	1.0%
Arson	6	0.6%
Restraint	6	0.6%
Grand Total	1020	100.0%

Data Unavailable: 1

Commitment Area

Region	Number	Percent
Metro Omaha	277	27.1%
Metro Lincoln	129	12.6%
Southeast	108	10.6%
Northeast	116	11.4%
South Central	125	12.2%
North Central	5	0.5%
Panhandle	49	4.8%
Out of State	208	20.4%
Data Unavailable	4	0.4%
Grand Total	1021	100.0%

Length of Stay in Institution

Month/Year	Number	Percent	Cumulative Number	Cumulative Percent
0 - 6 Months	30	3.7%	30	3.7%
7 - 12 Months	193	23.8%	223	27.5%
13 - 18 Months	160	19.8%	383	47.3%
19 - 24 Months	97	12.0%	480	59.3%
25 - 30 Months	27	3.3%	507	62.6%
31 - 36 Months	77	9.5%	584	72.1%
37 - 42 Months	35	4.3%	619	76.4%
43 - 48 Months	21	2.6%	640	79.0%
49 - 54 Months	24	3.0%	664	82.0%
55 - 60 Months	24	3.0%	688	84.9%
5.01 - 6.00 Yrs	21	2.6%	709	87.5%
6.01 - 7.00 Yrs	14	1.7%	723	89.3%
7.01 - 8.00 Yrs	10	1.2%	733	90.5%
8.01 - 9.00 Yrs	8	1.0%	741	91.5%
9.01 - 10.00 Yrs	6	0.7%	747	92.2%
10.01 - 11.00 Yrs	9	1.1%	756	93.3%
11.01 - 12.00 Yrs	6	0.7%	762	94.1%
12.01 - 13.00 Yrs	8	1.0%	770	95.1%
13.01 - 14.00 Yrs	10	1.2%	780	96.3%
14.01 - 15.00 Yrs	5	0.6%	785	96.9%
15.01 - 16.00 Yrs	2	0.2%	787	97.2%
16.01 - 17.00 Yrs	3	0.4%	790	97.5%
17.01 - 18.00 Yrs	1	0.1%	791	97.7%
18.01 - 19.00 Yrs	3	0.4%	794	98.0%
19.01 - 20.00 Yrs	2	0.2%	796	98.3%
Over 20 Years	14	1.7%	810	100.0%

Data Unavailable: 3

Not including interstate transfers to parole = 224
 Not including lifetime sex offenders = 114

Average Length of Stay in Institution

Years	Months	Days	# of Inmates
3.23	38.74	1179	810

Parole Population - FY2009 Statistical Reports

Minimum Sentence

Years	Number	Percent	Cumulative Number	Cumulative Percent
1.00 Yr or Less	75	7.3%	75	7.3%
1.01-2.00 Yrs	270	26.4%	345	33.8%
2.01-3.00 Yrs	128	12.5%	473	46.3%
3.01-4.00 Yrs	107	10.5%	580	56.8%
4.01-5.00 Yrs	104	10.2%	684	67.0%
5.01-6.00 Yrs	55	5.4%	739	72.4%
6.01-7.00 Yrs	40	3.9%	779	76.3%
7.01-8.00 Yrs	44	4.3%	823	80.6%
8.01-9.00 Yrs	18	1.8%	841	82.4%
9.01-10.00 Yrs	52	5.1%	893	87.5%
10.01-11.00 Yrs	14	1.4%	907	88.8%
11.01-12.00 Yrs	11	1.1%	918	89.9%
12.01-13.00 Yrs	6	0.6%	924	90.5%
13.01-14.00 Yrs	16	1.6%	940	92.1%
14.01-15.00 Yrs	14	1.4%	954	93.4%
15.01-16.00 Yrs	4	0.4%	958	93.8%
16.01-17.00 Yrs	8	0.8%	966	94.6%
17.01-18.00 Yrs	5	0.5%	971	95.1%
18.01-19.00 Yrs	1	0.1%	972	95.2%
19.01-20.00 Yrs	14	1.4%	986	96.6%
Over 20 Years	33	3.2%	1019	99.8%
Life	2	0.2%	1021	100.0%

Maximum Sentence

Years	Number	Percent	Cumulative Number	Cumulative Percent
1.00 Yr or Less	14	1.4%	14	1.4%
1.01-2.00 Yrs	39	3.8%	53	5.2%
2.01-3.00 Yrs	114	11.2%	167	16.4%
3.01-4.00 Yrs	134	13.1%	301	29.5%
4.01-5.00 Yrs	150	14.7%	451	44.2%
5.01-6.00 Yrs	81	7.9%	532	52.1%
6.01-7.00 Yrs	50	4.9%	582	57.0%
7.01-8.00 Yrs	55	5.4%	637	62.4%
8.01-9.00 Yrs	33	3.2%	670	65.6%
9.01-10.00 Yrs	81	7.9%	751	73.6%
10.01-11.00 Yrs	19	1.9%	770	75.4%
11.01-12.00 Yrs	40	3.9%	810	79.3%
12.01-13.00 Yrs	8	0.8%	818	80.1%
13.01-14.00 Yrs	13	1.3%	831	81.4%
14.01-15.00 Yrs	33	3.2%	864	84.6%
15.01-16.00 Yrs	18	1.8%	882	86.4%
16.01-17.00 Yrs	7	0.7%	889	87.1%
17.01-18.00 Yrs	8	0.8%	897	87.9%
19.01-20.00 Yrs	25	2.4%	922	90.3%
Over 20 Years	76	7.4%	998	97.7%
Life	23	2.3%	1021	100.0%

New Sentenced Admissions - FY2009 Statistical Reports

Age at Admission

Age	Number	Percent	Cumulative Number	Cumulative Percent
15	5	0.2%	5	0.2%
16	9	0.4%	14	0.7%
17	18	0.9%	32	1.5%
18	48	2.3%	80	3.9%
19	91	4.4%	171	8.3%
20 - 24	474	22.9%	645	31.2%
25 - 29	364	17.6%	1009	48.8%
30 - 34	293	14.2%	1302	63.0%
35 - 39	242	11.7%	1544	74.7%
40 - 44	208	10.1%	1752	84.7%
45 - 49	165	8.0%	1917	92.7%
50 - 54	93	4.5%	2010	97.2%
55 - 59	29	1.4%	2039	98.6%
60 and Over	29	1.4%	2068	100.0%

Average Age at Admission

Gender	Age at Admission	# of Inmates
Male	32.38	1815
Female	34.34	253
Grand Total	32.62	2068

Race

Race	Number	Percent
White	1172	56.7%
Black	499	24.1%
Hispanic	273	13.2%
Native American	94	4.5%
Asian	14	0.7%
Other	13	0.6%
Data Unavailable	2	0.1%
Hawaiian / Pacific Islander	1	0.0%
Grand Total	2068	100.0%

Gender

Gender	Number	Percent
Male	1815	87.8%
Female	253	12.2%
Grand Total	2068	100.0%

Admission Type

Admission Type	Number	Percent
First-Time	1298	62.8%
Multiple	751	36.3%
Unavailable	15	0.7%
Interstate Trans	4	0.2%
Grand Total	2068	100.0%

Admissions By Month

Month/Year	# of Inmates	Percent
2008/07	169	8.2%
2008/08	139	6.7%
2008/09	150	7.3%
2008/10	215	10.4%
2008/11	160	7.7%
2008/12	187	9.0%
2009/01	149	7.2%
2009/02	159	7.7%
2009/03	187	9.0%
2009/04	197	9.5%
2009/05	181	8.8%
2009/06	175	8.5%
Grand Total	2068	100.0%

Avg Min & Max Sentence

(Life set to 10-year average of 18.17 Yrs)

Avg MIN Sentence Mo's	Avg MAX Sentence Mo's	# of Inmates
42.27	67.37	2068

New Sentenced Admissions - FY2009 Statistical Reports

Most Serious Offense Category - Females

Offense Category	# of Inmates	Percent
Drugs	76	30.3%
Theft	54	21.5%
Assault	30	12.0%
Motor Vehicle	28	11.2%
Fraud	27	10.8%
Robbery	10	4.0%
Other	9	3.6%
Burglary	7	2.8%
Sex Offenses	5	2.0%
Arson	2	0.8%
Weapons	2	0.8%
Homicide	1	0.4%
Grand Total	251	100.0%

Data Unavailable: 2

Most Serious Offense Category - Total

Offense Category	# of Inmates	Percent
Drugs	419	20.4%
Assault	337	16.4%
Theft	272	13.3%
Motor Vehicle	254	12.4%
Sex Offenses	200	9.8%
Burglary	168	8.2%
Robbery	111	5.4%
Fraud	91	4.4%
Other	76	3.7%
Weapons	47	2.3%
Homicide	25	1.2%
Morals	24	1.2%
Restraint	16	0.8%
Arson	11	0.5%
Grand Total	2051	100.0%

Data Unavailable: 17

Commitment Area - Females

Region	Number	Percent
Metro Omaha	106	41.9%
Metro Lincoln	40	15.8%
Southeast	24	9.5%
Northeast	28	11.1%
South Central	36	14.2%
Panhandle	18	7.1%
Data Unavailable	1	0.4%
Grand Total	253	100.0%

Most Serious Offense Category - Males

Offense Category	# of Inmates	Percent
Drugs	343	19.1%
Assault	307	17.1%
Motor Vehicle	226	12.6%
Theft	218	12.1%
Sex Offenses	196	10.9%
Burglary	161	8.9%
Robbery	101	5.6%
Other	67	3.7%
Fraud	64	3.6%
Weapons	45	2.5%
Homicide	24	1.3%
Morals	23	1.3%
Restraint	16	0.9%
Arson	9	0.5%
Grand Total	1800	100.0%

Data Unavailable: 15

Commitment Area - Total

Region	Number	Percent
Metro Omaha	887	42.9%
Metro Lincoln	306	14.8%
Southeast	194	9.4%
Northeast	297	14.4%
South Central	237	11.5%
North Central	21	1.0%
Panhandle	105	5.1%
Out of State	4	0.2%
Data Unavailable	17	0.8%
Grand Total	2068	100.0%

Commitment Area - Males

Region	Number	Percent
Metro Omaha	781	43.0%
Metro Lincoln	266	14.7%
Southeast	170	9.4%
Northeast	269	14.8%
South Central	201	11.1%
North Central	21	1.2%
Panhandle	87	4.8%
Out of State	4	0.2%
Data Unavailable	16	0.9%
Grand Total	1815	100.0%

New Sentenced Admissions - FY2009 Statistical Reports

Minimum Sentence

Years	Number	Percent	Cumulative Number	Cumulative Percent
1.00 Yr or Less	600	29.0%	600	29.0%
1.01-2.00 Yrs	702	33.9%	1302	63.0%
2.01-3.00 Yrs	240	11.6%	1542	74.6%
3.01-4.00 Yrs	166	8.0%	1708	82.6%
4.01-5.00 Yrs	97	4.7%	1805	87.3%
5.01-6.00 Yrs	44	2.1%	1849	89.4%
6.01-7.00 Yrs	15	0.7%	1864	90.1%
7.01-8.00 Yrs	27	1.3%	1891	91.4%
8.01-9.00 Yrs	11	0.5%	1902	92.0%
9.01-10.00 Yrs	40	1.9%	1942	93.9%
10.01-11.00 Yrs	5	0.2%	1947	94.1%
11.01-12.00 Yrs	11	0.5%	1958	94.7%
12.01-13.00 Yrs	3	0.1%	1961	94.8%
13.01-14.00 Yrs	6	0.3%	1967	95.1%
14.01-15.00 Yrs	13	0.6%	1980	95.7%
15.01-16.00 Yrs	5	0.2%	1985	96.0%
16.01-17.00 Yrs	5	0.2%	1990	96.2%
17.01-18.00 Yrs	11	0.5%	2001	96.8%
18.01-19.00 Yrs	2	0.1%	2003	96.9%
19.01-20.00 Yrs	27	1.3%	2030	98.2%
Over 20 Years	30	1.5%	2060	99.6%
Life	8	0.4%	2068	100.0%

Maximum Sentence

Years	Number	Percent	Cumulative Number	Cumulative Percent
1.00 Yr or Less	318	15.4%	318	15.4%
1.01-2.00 Yrs	321	15.5%	639	30.9%
2.01-3.00 Yrs	352	17.0%	991	47.9%
3.01-4.00 Yrs	258	12.5%	1249	60.4%
4.01-5.00 Yrs	297	14.4%	1546	74.8%
5.01-6.00 Yrs	100	4.8%	1646	79.6%
6.01-7.00 Yrs	38	1.8%	1684	81.4%
7.01-8.00 Yrs	67	3.2%	1751	84.7%
8.01-9.00 Yrs	23	1.1%	1774	85.8%
9.01-10.00 Yrs	81	3.9%	1855	89.7%
10.01-11.00 Yrs	10	0.5%	1865	90.2%
11.01-12.00 Yrs	25	1.2%	1890	91.4%
12.01-13.00 Yrs	1	0.0%	1891	91.4%
13.01-14.00 Yrs	7	0.3%	1898	91.8%
14.01-15.00 Yrs	24	1.2%	1922	92.9%
15.01-16.00 Yrs	7	0.3%	1929	93.3%
16.01-17.00 Yrs	2	0.1%	1931	93.4%
17.01-18.00 Yrs	10	0.5%	1941	93.9%
18.01-19.00 Yrs	2	0.1%	1943	94.0%
19.01-20.00 Yrs	37	1.8%	1980	95.7%
Over 20 Years	75	3.6%	2055	99.4%
Life	13	0.6%	2068	100.0%

Revocations Admissions - FY2009 Statistical Reports

Age at Admission

Age	Number	Percent	Cumulative Number	Cumulative Percent
16	3	1.0%	3	1.0%
17	7	2.4%	10	3.4%
18	8	2.7%	18	6.1%
19	19	6.4%	37	12.5%
20 - 24	75	25.3%	112	37.8%
25 - 29	52	17.6%	164	55.4%
30 - 34	47	15.9%	211	71.3%
35 - 39	33	11.1%	244	82.4%
40 - 44	25	8.4%	269	90.9%
45 - 49	19	6.4%	288	97.3%
50 - 54	8	2.7%	296	100.0%

Average Age at Admission

Age at Admission	# of Inmates
30.16	296

Gender

Gender	Number	Percent
Male	252	85.1%
Female	44	14.9%
Grand Total	296	100.0%

Race

Race	Number	Percent
WHITE	146	49.3%
BLACK	106	35.8%
HISPANIC	25	8.4%
NATIVE AMERICAN	16	5.4%
ASIAN	2	0.7%
OTHER	1	0.3%
Grand Total	296	100.0%

Parole Year & Month

Date on Parole	Number	Percent
2004/04	1	0.3%
2004/08	1	0.3%
2005/02	1	0.3%
2006/04	1	0.3%
2006/08	1	0.3%
2006/10	2	0.7%
2006/11	1	0.3%
2006/12	1	0.3%
2007/01	1	0.3%
2007/03	2	0.7%
2007/04	5	1.7%
2007/05	3	1.0%
2007/06	5	1.7%
2007/07	8	2.7%
2007/08	4	1.4%
2007/09	6	2.0%
2007/10	11	3.7%
2007/11	12	4.1%
2007/12	7	2.4%
2008/01	15	5.1%
2008/02	23	7.8%
2008/03	23	7.8%
2008/04	13	4.4%
2008/05	12	4.1%
2008/06	25	8.4%
2008/07	20	6.8%
2008/08	13	4.4%
2008/09	13	4.4%
2008/10	23	7.8%
2008/11	11	3.7%
2008/12	11	3.7%
2009/01	12	4.1%
2009/02	8	2.7%
2009/03	6	2.0%
2009/04	2	0.7%
2009/05	2	0.7%
Grand Total	296	100.0%

Admission Status

Status	Number	Percent
First - Time	157	53.0%
Multiple	139	47.0%
Grand Total	296	100.0%

Revocations Admissions - FY2009 Statistical Reports

Most Serious Offense/FEMALE

Offense	Number	Percent
POS CNTRL SUB EXCEPT MARIJUANA	11	25.0%
MANU/DIST/DEL/DISP OR POSS W/I	6	13.6%
THEFT BY SHOPLIFTING	4	9.1%
FORGERY 2ND DEGREE	3	6.8%
THEFT BY DECEPTION	3	6.8%
THEFT BY RECEIVING STOLEN PROP	3	6.8%
DRIVING UNDER REVOKED LICENSE	2	4.5%
ESCAPE	2	4.5%
VIOL OF FINANCIAL TRANS DEVICE	2	4.5%
AQUIRING CONT SUBSTNC BY FRAUD	1	2.3%
ARSON 2ND DEGREE	1	2.3%
ASSAULT 2ND DEGREE	1	2.3%
BAD CHECK \$75-\$300	1	2.3%
DRIVING UNDER INFLUENCE/INJURY	1	2.3%
OPERATE MOTOR VEH/AVOID ARREST	1	2.3%
ROBBERY	1	2.3%
VULNERABLE ADULT ABUSE	1	2.3%
Grand Total	44	100.0%

Most Serious Offense/MALE

Offense	Number	Percent
ROBBERY	44	17.5%
MANU/DIST/DEL/DISP OR POSS W/I	36	14.3%
POS CNTRL SUB EXCEPT MARIJUANA	28	11.1%
BURGLARY	26	10.3%
THEFT BY RECEIVING STOLEN PROP	19	7.5%
DRIVING UNDER REVOKED LICENSE	14	5.6%
THEFT BY UNLWFL TAKING OR DISP	14	5.6%
FORGERY 2ND DEGREE	8	3.2%
THEFT BY SHOPLIFTING	5	2.0%
ASSAULT 2ND DEGREE	4	1.6%
DRIVING WHILE INTOXICATED	4	1.6%
TERRORISTIC THREATS	4	1.6%
ASLT PEAC OFCR/DCS EMP 3RD DGR	3	1.2%
ESCAPE	3	1.2%
OPERATE MOTOR VEH/AVOID ARREST	3	1.2%
POSSESSION OF BURGLARY TOOLS	3	1.2%
STRANGULATION	3	1.2%
VIOL OF FINANCIAL TRANS DEVICE	3	1.2%
ASSAULT 1ST DEGREE	2	0.8%
ASSAULT 3RD DEGREE	2	0.8%
CRIMINAL MISCHIEF	2	0.8%
CRIMINAL NON-SUPPORT	2	0.8%
DOMESTIC ASSAULT	2	0.8%
FALSE IMPRISONMENT 1ST DEGREE	2	0.8%
MURDER 2ND DEGREE	2	0.8%
POS OF OVER 1 LB. OF MARIJUANA	2	0.8%
THEFT	2	0.8%
UNLAWFUL DISCHARGE OF FIREARM	2	0.8%
VIOLATION OF PROTECTION ORDER	2	0.8%
MANSLAUGHTER	1	0.4%
POS OF 1 OZ - 1 LB MARIJUANA	1	0.4%
POS OF FRGD INST \$300 OR MORE	1	0.4%
POSS DEADLY WEAP BY FELON/FUG	1	0.4%
SEXUAL ASSAULT ON A CHILD	1	0.4%
THEFT BY DECEPTION	1	0.4%
Grand Total	252	100.0%

Revocations Admissions - FY2009 Statistical Reports

Most Serious Offense Category

Offense Category	Number	Percent
Drugs	85	28.7%
Theft	51	17.2%
Robbery	45	15.2%
Burglary	29	9.8%
Motor Vehicle	25	8.4%
Assault	22	7.4%
Fraud	18	6.1%
Other	9	3.0%
Homicide	3	1.0%
Weapons	3	1.0%
Morals	2	0.7%
Restraint	2	0.7%
Arson	1	0.3%
Sex Offenses	1	0.3%
Grand Total	296	100.0%

Avg Min & Max Sentence

(Life set to 10-year average of 18.17 Yrs)

Avg MIN Sentence Mo's	Avg MAX Sentence Mo's	Number
69.76	137.26	296

County of Commitment

County	Number	Percent
ADAMS	4	1.4%
ANTELOPE	1	0.3%
BOONE	1	0.3%
BOX BUTTE	3	1.0%
BUFFALO	9	3.0%
BUTLER	3	1.0%
CASS	4	1.4%
COLFAX	1	0.3%
CUMING	2	0.7%
CUSTER	1	0.3%
DAKOTA	1	0.3%
DAWES	3	1.0%
DAWSON	3	1.0%
DODGE	11	3.7%
DOUGLAS	132	44.6%
FILLMORE	2	0.7%
GAGE	4	1.4%
GARDEN	1	0.3%
HALL	10	3.4%
HAMILTON	4	1.4%
HITCHCOCK	1	0.3%
KEITH	1	0.3%
KNOX	1	0.3%
LANCASTER	39	13.2%
LINCOLN	2	0.7%
MADISON	7	2.4%
NEMAHA	4	1.4%
OTOE	1	0.3%
PLATTE	3	1.0%
POLK	1	0.3%
RICHARDSON	1	0.3%
SARPY	14	4.7%
SAUNDERS	4	1.4%
SCOTTS BLUFF	8	2.7%
SEWARD	4	1.4%
SHERIDAN	1	0.3%
THAYER	2	0.7%
WASHINGTON	2	0.7%
Grand Total	296	100.0%

Revocations Admissions - FY2009 Statistical Reports

Minimum Sentence

Years	Number	Percent	Cumulative Number	Cumulative Percent
1 Yr or Less	24	8.1%	24	8.1%
1.01-2.00 Yrs	103	34.8%	127	42.9%
2.01-3.00 Yrs	32	10.8%	159	53.7%
3.01-4.00 Yrs	41	13.9%	200	67.6%
4.01-5.00 Yrs	23	7.8%	223	75.3%
5.01-6.00 Yrs	16	5.4%	239	80.7%
6.01-7.00 Yrs	12	4.1%	251	84.8%
7.01-8.00 Yrs	6	2.0%	257	86.8%
8.01-9.00 Yrs	8	2.7%	265	89.5%
9.01-10.00 Yrs	10	3.4%	275	92.9%
10.01-11.00 Yrs	3	1.0%	278	93.9%
11.01-12.00 Yrs	3	1.0%	281	94.9%
12.01-13.00 Yrs	1	0.3%	282	95.3%
13.01-14.00 Yrs	2	0.7%	284	95.9%
14.01-15.00 Yrs	2	0.7%	286	96.6%
16.01-17.00 Yrs	4	1.4%	290	98.0%
17.01-18.00 Yrs	1	0.3%	291	98.3%
19.01-20.00 Yrs	2	0.7%	293	99.0%
20+ Years	3	1.0%	296	100.0%

Maximum Sentence

Years	Number	Percent	Cumulative Number	Cumulative Percent
1 Yr or Less	3	1.0%	3	1.0%
1.01-2.00 Yrs	10	3.4%	13	4.4%
2.01-3.00 Yrs	34	11.5%	47	15.9%
3.01-4.00 Yrs	37	12.5%	84	28.4%
4.01-5.00 Yrs	53	17.9%	137	46.3%
5.01-6.00 Yrs	25	8.4%	162	54.7%
6.01-7.00 Yrs	17	5.7%	179	60.5%
7.01-8.00 Yrs	16	5.4%	195	65.9%
8.01-9.00 Yrs	7	2.4%	202	68.2%
9.01-10.00 Yrs	25	8.4%	227	76.7%
10.01-11.00 Yrs	12	4.1%	239	80.7%
11.01-12.00 Yrs	5	1.7%	244	82.4%
12.01-13.00 Yrs	6	2.0%	250	84.5%
13.01-14.00 Yrs	5	1.7%	255	86.1%
14.01-15.00 Yrs	5	1.7%	260	87.8%
15.01-16.00 Yrs	7	2.4%	267	90.2%
16.01-17.00 Yrs	3	1.0%	270	91.2%
17.01-18.00 Yrs	4	1.4%	274	92.6%
19.01-20.00 Yrs	6	2.0%	280	94.6%
20+ Years	16	5.4%	296	100.0%

New Sentenced & Revocations Admissions - FY2009 Statistical Reports

Age at Admission

Age	Number	Percent	Cumulative Number	Cumulative Percent
15	5	0.2%	5	0.2%
16	12	0.5%	17	0.7%
17	25	1.1%	42	1.8%
18	56	2.4%	98	4.1%
19	110	4.7%	208	8.8%
20 - 24	549	23.2%	757	32.0%
25 - 29	416	17.6%	1173	49.6%
30 - 34	340	14.4%	1513	64.0%
35 - 39	275	11.6%	1788	75.6%
40 - 44	233	9.9%	2021	85.5%
45 - 49	184	7.8%	2205	93.3%
50 - 54	101	4.3%	2306	97.5%
55 - 59	29	1.2%	2335	98.8%
60 and Over	29	1.2%	2364	100.0%

Gender

Gender	Number	Percent
Female	297	12.6%
Male	2067	87.4%
Grand Total	2364	100.0%

Race

Race	Number	Percent
WHITE	1318	55.8%
BLACK	605	25.6%
HISPANIC	298	12.6%
NATIVE AMERICAN	110	4.7%
ASIAN	16	0.7%
OTHER	14	0.6%
DATA UNAVAILABLE	2	0.1%
HAWAIIAN / PACIFIC ISLANDER	1	0.0%
Grand Total	2364	100.0%

Admission Status

Status	Number	Percent
First - Time	1455	61.5%
Multiple	890	37.6%
Data Unavailable	15	0.6%
Interstate Transfer	4	0.2%
Grand Total	2364	100.0%

Admission Type

Type	Number	Percent
New Admission	2068	87.5%
Revocation	296	12.5%
Grand Total	2364	100.0%

Most Serious Offense Category

Offense Category	Number	Percent
Drugs	504	21.5%
Assault	359	15.3%
Theft	323	13.8%
Motor Vehicle	279	11.9%
Sex Offenses	202	8.6%
Burglary	197	8.4%
Robbery	156	6.6%
Fraud	109	4.6%
Other	85	3.6%
Weapons	50	2.1%
Homicide	28	1.2%
Morals	25	1.1%
Restraint	18	0.8%
Arson	12	0.5%
Grand Total	2347	100.0%

Data Unavailable: 17

New Sentenced & Revocations Admissions - FY2009 Statistical Reports

Minimum Sentence

Years	Number	Percent	Cumulative Number	Cumulative Percent
1 Yr or Less	624	26.4%	624	26.4%
1.01-2.00 Yrs	805	34.1%	1429	60.4%
2.01-3.00 Yrs	272	11.5%	1701	72.0%
3.01-4.00 Yrs	207	8.8%	1908	80.7%
4.01-5.00 Yrs	120	5.1%	2028	85.8%
5.01-6.00 Yrs	60	2.5%	2088	88.3%
6.01-7.00 Yrs	27	1.1%	2115	89.5%
7.01-8.00 Yrs	33	1.4%	2148	90.9%
8.01-9.00 Yrs	19	0.8%	2167	91.7%
9.01-10.00 Yrs	50	2.1%	2217	93.8%
10.01-11.00 Yrs	8	0.3%	2225	94.1%
11.01-12.00 Yrs	14	0.6%	2239	94.7%
12.01-13.00 Yrs	4	0.2%	2243	94.9%
13.01-14.00 Yrs	8	0.3%	2251	95.2%
14.01-15.00 Yrs	15	0.6%	2266	95.9%
15.01-16.00 Yrs	5	0.2%	2271	96.1%
16.01-17.00 Yrs	9	0.4%	2280	96.4%
17.01-18.00 Yrs	12	0.5%	2292	97.0%
18.01-19.00 Yrs	2	0.1%	2294	97.0%
19.01-20.00 Yrs	29	1.2%	2323	98.3%
20+ Years	33	1.4%	2356	99.7%
Life	8	0.3%	2364	100.0%

Maximum Sentence

Years	Number	Percent	Cumulative Number	Cumulative Percent
1 Yr or Less	321	13.6%	321	13.6%
1.01-2.00 Yrs	331	14.0%	652	27.7%
2.01-3.00 Yrs	386	16.4%	1038	44.0%
3.01-4.00 Yrs	295	12.5%	1333	56.6%
4.01-5.00 Yrs	350	14.8%	1683	71.4%
5.01-6.00 Yrs	125	5.3%	1808	76.7%
6.01-7.00 Yrs	55	2.3%	1863	79.0%
7.01-8.00 Yrs	83	3.5%	1946	82.6%
8.01-9.00 Yrs	30	1.3%	1976	83.8%
9.01-10.00 Yrs	106	4.5%	2082	88.3%
10.01-11.00 Yrs	22	0.9%	2104	89.3%
11.01-12.00 Yrs	30	1.3%	2134	90.5%
12.01-13.00 Yrs	7	0.3%	2141	90.8%
13.01-14.00 Yrs	12	0.5%	2153	91.3%
14.01-15.00 Yrs	29	1.2%	2182	92.6%
15.01-16.00 Yrs	7	0.3%	2189	92.9%
16.01-17.00 Yrs	5	0.2%	2194	93.1%
17.01-18.00 Yrs	14	0.6%	2208	93.7%
18.01-19.00 Yrs	2	0.1%	2210	93.8%
19.01-20.00 Yrs	43	1.8%	2253	95.6%
20+ Years	91	3.9%	2344	99.4%
Life	13	0.6%	2357	100.0%

Evaluator / Safekeeper Admissions - FY2009 Statistical Reports

Age at Admission

Age	Number	Percent	Cumulative Number	Cumulative Percent
17	1	0.6%	1	0.6%
18	5	2.9%	6	3.5%
19	7	4.0%	13	7.5%
20 - 24	34	19.7%	47	27.2%
25 - 29	30	17.3%	77	44.5%
30 - 34	19	11.0%	96	55.5%
35 - 39	28	16.2%	124	71.7%
40 - 44	15	8.7%	139	80.3%
45 - 49	15	8.7%	154	89.0%
50 - 54	8	4.6%	162	93.6%
55 - 59	9	5.2%	171	98.8%
60 and Over	2	1.2%	173	100.0%

Average Age at Admission

Age at Admission	# of Inmates
34.15	173

Gender

Gender	Number	Percent
Male	136	78.6%
Female	37	21.4%
Grand Total	173	100.0%

Race

Race	Number	Percent
White	139	80.3%
Black	14	8.1%
Hispanic	12	6.9%
Native American	7	4.0%
Other	1	0.6%
Grand Total	173	100.0%

Status

Status	Number	Percent
County Safekeeper	129	74.6%
Evaluator	44	25.4%
Grand Total	173	100.0%

Admissions By Month

Month/Year	# of Inmates	Percent
2008/07	19	11.0%
2008/08	15	8.7%
2008/09	7	4.0%
2008/10	17	9.8%
2008/11	11	6.4%
2008/12	12	6.9%
2009/01	23	13.3%
2009/02	19	11.0%
2009/03	14	8.1%
2009/04	14	8.1%
2009/05	13	7.5%
2009/06	9	5.2%
Grand Total	173	100.0%

Commitment Area

Region	Number	Percent
Metro Omaha	12	6.9%
Metro Lincoln	4	2.3%
Southeast	71	41.0%
Northeast	54	31.2%
South Central	13	7.5%
North Central	4	2.3%
Panhandle	14	8.1%
Data Unavailable	1	0.6%
Grand Total	173	100.0%

WEC Admissions - FY2009 Statistical Reports

Probationer Age at Admission

Age	Number	Percent	Cumulative Number	Cumulative Percent
17	9	5.2%	9	5.2%
18	30	17.4%	39	22.7%
19	37	21.5%	76	44.2%
20 - 24	61	35.5%	137	79.7%
25 - 29	12	7.0%	149	86.6%
30 - 34	7	4.1%	156	90.7%
35 - 39	6	3.5%	162	94.2%
40 - 44	4	2.3%	166	96.5%
45 - 49	5	2.9%	171	99.4%
50 - 54	1	0.6%	172	100.0%

Probationers Average Age at Admission

Age at Admission	# of Probationers
23.35	172

Probationer Gender

Gender	Number	Percent
Male	149	86.6%
Female	23	13.4%
Grand Total	172	100.0%

Probationer Race

Race	Number	Percent
White	125	72.7%
Black	22	12.8%
Hispanic	15	8.7%
American Indian	8	4.7%
Asian	2	1.2%
Grand Total	172	100.0%

Probationer Admissions By Month

Month/Year	# of Probationers	Percent
2008/07	13	7.6%
2008/08	11	6.4%
2008/09	14	8.1%
2008/10	15	8.7%
2008/11	20	11.6%
2008/12	16	9.3%
2009/01	14	8.1%
2009/02	11	6.4%
2009/03	23	13.4%
2009/04	17	9.9%
2009/05	8	4.7%
2009/06	10	5.8%
Grand Total	172	100.0%

Probationer Most Serious Offense Category

Offense Category	# of Probationers	Percent
Burglary	50	29.8%
Drugs	35	20.8%
Theft	27	16.1%
Assault	16	9.5%
Motor Vehicle	14	8.3%
Other	11	6.5%
Robbery	7	4.2%
Fraud	5	3.0%
Arson	2	1.2%
Weapons	1	0.6%
Grand Total	168	100.0%

Data Unavailable: 4

WEC Admissions - FY2009 Statistical Reports

Probationer County of Commitment

County	Number	Percent
ADAMS	9	5.4%
BOONE	1	0.6%
BOX BUTTE	1	0.6%
BUFFALO	2	1.2%
BUTLER	5	3.0%
CHEYENNE	1	0.6%
CLAY	1	0.6%
CUMING	1	0.6%
CUSTER	2	1.2%
DAKOTA	3	1.8%
DAWSON	3	1.8%
DIXON	1	0.6%
DODGE	5	3.0%
DOUGLAS	27	16.1%
FILLMORE	1	0.6%
GAGE	11	6.5%
HALL	19	11.3%
HAMILTON	2	1.2%
HOLT	2	1.2%
HOWARD	2	1.2%
JEFFERSON	2	1.2%
JOHNSON	1	0.6%
LANCASTER	22	13.1%
LINCOLN	4	2.4%
MADISON	4	2.4%
MERRICK	2	1.2%
NEMAHA	2	1.2%
NUCKOLLS	1	0.6%
PAWNEE	4	2.4%
PHELPS	1	0.6%
PIERCE	1	0.6%
PLATTE	4	2.4%
RED WILLOW	1	0.6%
SARPY	1	0.6%
SAUNDERS	3	1.8%
SCOTTS BLUFF	12	7.1%
THURSTON	1	0.6%
WASHINGTON	1	0.6%
WAYNE	1	0.6%
YORK	1	0.6%
Grand Total	168	100.0%

Data Unavailable: 4

INMATE Admissions (not probationer)

of Inmates
117

Institutional Releases - FY2009 Statistical Reports

Age at Admission

Age	Number	Percent	Cumulative Number	Cumulative Percent
15	1	0.0%	1	0.0%
16	7	0.3%	8	0.4%
17	19	0.8%	27	1.2%
18	60	2.6%	87	3.8%
19	101	4.4%	188	8.2%
20 - 24	523	22.9%	711	31.2%
25 - 29	412	18.1%	1123	49.2%
30 - 34	321	14.1%	1444	63.3%
35 - 39	280	12.3%	1724	75.5%
40 - 44	258	11.3%	1982	86.9%
45 - 49	160	7.0%	2142	93.9%
50 - 54	93	4.1%	2235	97.9%
55 - 59	34	1.5%	2269	99.4%
60 and Over	13	0.6%	2282	100.0%
Grand Total	2282	100.0%	2282	100.0%

Average Age at Admission

Age at Admission	# of Inmates
32.30	2282

Race

Race	Number	Percent
WHITE	1253	54.9%
BLACK	598	26.2%
HISPANIC	293	12.8%
NATIVE AMERICAN	122	5.3%
ASIAN	10	0.4%
OTHER	6	0.3%
Grand Total	2282	100.0%

Release Type (by gender)

Release Type	Females	% of Females	Males	% of Males	Total	% of Total
Mandatory Discharge	174	56.9%	1104	55.9%	1278	56.0%
Parole	130	42.5%	851	43.1%	981	43.0%
Deceased	2	0.7%	11	0.6%	13	0.6%
Other			8	0.4%	8	0.4%
Escape			1	0.1%	1	0.0%
Case Dismissed			1	0.1%	1	0.0%
Grand Total	306	100.0%	1976	100.0%	2282	100.0%

Admission Status

Status	Number	Percent
First - Time	1422	62.3%
Multiple	851	37.3%
Interstate Transfer	9	0.4%
Grand Total	2282	100.0%

Avg Min & Max Sentence

(Life set to 10-year average of 18.17 Yrs)

Avg MIN Sentence Mo's	Avg MAX Sentence Mo's	Number	ID Number
35.57	65.71	2282	

Average Length of Stay

Gender	Years	Months	Days	# of Inmates
Female	1.61	19.36	589	306
Male	2.28	27.35	832	1976
Grand Total	2.19	26.28	799	2282

Institutional Releases - FY2009 Statistical Reports

Length of Stay

Months/Years	Number	Percent	Cumulative Number	Cumulative Percent
0 - 6 Months	468	20.5%	468	20.5%
7 - 12 Months	445	19.5%	913	40.0%
13 - 18 Months	354	15.5%	1267	55.5%
19 - 24 Months	283	12.4%	1550	67.9%
25 - 30 Months	97	4.3%	1647	72.2%
31 - 36 Months	215	9.4%	1862	81.6%
37 - 42 Months	64	2.8%	1926	84.4%
43 - 48 Months	54	2.4%	1980	86.8%
49 - 54 Months	43	1.9%	2023	88.7%
55 - 60 Months	44	1.9%	2067	90.6%
5.01 - 6.00 Yrs	52	2.3%	2119	92.9%
6.01 - 7.00 Yrs	41	1.8%	2160	94.7%
7.01 - 8.00 Yrs	24	1.1%	2184	95.7%
8.01 - 9.00 Yrs	15	0.7%	2199	96.4%
9.01 - 10.00 Yrs	21	0.9%	2220	97.3%
10.01 - 11.00 Yrs	14	0.6%	2234	97.9%
11.01 - 12.00 Yrs	10	0.4%	2244	98.3%
12.01 - 13.00 Yrs	3	0.1%	2247	98.5%
13.01 - 14.00 Yrs	4	0.2%	2251	98.6%
14.01 - 15.00 Yrs	7	0.3%	2258	98.9%
15.01 - 16.00 Yrs	4	0.2%	2262	99.1%
16.01 - 17.00 Yrs	2	0.1%	2264	99.2%
17.01 - 18.00 Yrs	2	0.1%	2266	99.3%
18.01 - 19.00 Yrs	4	0.2%	2270	99.5%
19.01 - 20.00 Yrs	1	0.0%	2271	99.5%
Over 20 Years	11	0.5%	2282	100.0%
Grand Total	2282	100.0%	2282	100.0%

Most Serious Offense Category

Category	Number	Percent
Drugs	514	22.5%
Theft	327	14.3%
Assault	307	13.5%
Burglary	199	8.7%
Motor Vehicle	251	11.0%
Fraud	121	5.3%
Sex Offenses	187	8.2%
Robbery	139	6.1%
Other	96	4.2%
Weapons	57	2.5%
Homicide	33	1.4%
Morals	26	1.1%
Restraint	15	0.7%
Arson	9	0.4%
Grand Total	2281	100.0%

Data Unavailable: 1

Institutional Releases - FY2009 Statistical Reports

Minimum Sentence

Years	Number	Percent	Cumulative Number	Cumulative Percent
1.00 Yr or Less	642	28.1%	642	28.1%
1.01-2.00 Yrs	802	35.1%	1444	63.3%
2.01-3.00 Yrs	274	12.0%	1718	75.3%
3.01-4.00 Yrs	154	6.7%	1872	82.0%
4.01-5.00 Yrs	112	4.9%	1984	86.9%
5.01-6.00 Yrs	65	2.8%	2049	89.8%
6.01-7.00 Yrs	40	1.8%	2089	91.5%
7.01-8.00 Yrs	46	2.0%	2135	93.6%
8.01-9.00 Yrs	13	0.6%	2148	94.1%
9.01-10.00 Yrs	58	2.5%	2206	96.7%
10.01-11.00 Yrs	7	0.3%	2213	97.0%
11.01-12.00 Yrs	8	0.4%	2221	97.3%
12.01-13.00 Yrs	7	0.3%	2228	97.6%
13.01-14.00 Yrs	6	0.3%	2234	97.9%
14.01-15.00 Yrs	9	0.4%	2243	98.3%
15.01-16.00 Yrs	4	0.2%	2247	98.5%
16.01-17.00 Yrs	7	0.3%	2254	98.8%
17.01-18.00 Yrs	2	0.1%	2256	98.9%
19.01-20.00 Yrs	9	0.4%	2265	99.3%
Over 20 Years	13	0.6%	2278	99.8%
Life	4	0.2%	2282	100.0%
Grand Total	2282	100.0%	2282	100.0%

Maximum Sentence

Years	Number	Percent	Cumulative Number	Cumulative Percent
1.00 Yr or Less	316	13.8%	316	13.8%
1.01-2.00 Yrs	364	16.0%	680	29.8%
2.01-3.00 Yrs	346	15.2%	1026	45.0%
3.01-4.00 Yrs	302	13.2%	1328	58.2%
4.01-5.00 Yrs	321	14.1%	1649	72.3%
5.01-6.00 Yrs	125	5.5%	1774	77.7%
6.01-7.00 Yrs	65	2.8%	1839	80.6%
7.01-8.00 Yrs	68	3.0%	1907	83.6%
8.01-9.00 Yrs	30	1.3%	1937	84.9%
9.01-10.00 Yrs	90	3.9%	2027	88.8%
10.01-11.00 Yrs	21	0.9%	2048	89.7%
11.01-12.00 Yrs	44	1.9%	2092	91.7%
12.01-13.00 Yrs	18	0.8%	2110	92.5%
13.01-14.00 Yrs	7	0.3%	2117	92.8%
14.01-15.00 Yrs	35	1.5%	2152	94.3%
15.01-16.00 Yrs	17	0.7%	2169	95.0%
16.01-17.00 Yrs	6	0.3%	2175	95.3%
17.01-18.00 Yrs	7	0.3%	2182	95.6%
18.01-19.00 Yrs	2	0.1%	2184	95.7%
19.01-20.00 Yrs	29	1.3%	2213	97.0%
Over 20 Years	58	2.5%	2271	99.5%
Life	11	0.5%	2282	100.0%
Grand Total	2282	100.0%	2282	100.0%

Evaluator / Safekeeper Releases - FY2009 Statistical Reports

Age at Admission

Age	Number	Percent	Cumulative Number	Cumulative Percent
17	1	0.6%	1	0.6%
18	4	2.2%	5	2.8%
19	10	5.6%	15	8.4%
20 - 24	26	14.5%	41	22.9%
25 - 29	28	15.6%	69	38.5%
30 - 34	23	12.8%	92	51.4%
35 - 39	27	15.1%	119	66.5%
40 - 44	21	11.7%	140	78.2%
45 - 49	18	10.1%	158	88.3%
50 - 54	9	5.0%	167	93.3%
55 - 59	8	4.5%	175	97.8%
60 and Over	4	2.2%	179	100.0%

Average Age at Admission

Age at Admission	# of Inmates
35.42	179

Age at Release

Age	Number	Percent	Cumulative Number	Cumulative Percent
17	1	0.6%	1	0.6%
18	3	1.7%	4	2.2%
19	8	4.5%	12	6.7%
20 - 24	28	15.6%	40	22.3%
25 - 29	29	16.2%	69	38.5%
30 - 34	23	12.8%	92	51.4%
35 - 39	26	14.5%	118	65.9%
40 - 44	22	12.3%	140	78.2%
45 - 49	18	10.1%	158	88.3%
50 - 54	9	5.0%	167	93.3%
55 - 59	8	4.5%	175	97.8%
60 and Over	4	2.2%	179	100.0%

Average Age at Release

Age at Release	# of Inmates
35.58	179

Average Length of Stay

Years	Months	Days	# of Inmates
0.15	1.85	56	179

Institutional Release Date

Year/Month	Number	Percent
2008/07	29	16.2%
2008/08	17	9.5%
2008/09	13	7.3%
2008/10	14	7.8%
2008/11	13	7.3%
2008/12	7	3.9%
2009/01	13	7.3%
2009/02	14	7.8%
2009/03	11	6.1%
2009/04	20	11.2%
2009/05	18	10.1%
2009/06	10	5.6%
Grand Total	179	100.0%

Institutional Release Type

Type	Number	Percent
MANDATORY DISCHARGE	148	82.7%
EXPIRATION OF SENTENCE	22	12.3%
OTHER	9	5.0%
Grand Total	179	100.0%

Race

Race	Number	Percent
White	143	79.9%
Hispanic	16	8.9%
Black	11	6.1%
Native American	7	3.9%
Asian	1	0.6%
Other	1	0.6%
Grand Total	179	100.0%

Gender

Gender	Number	Percent
Male	136	76.0%
Female	43	24.0%
Grand Total	179	100.0%

Status

Status	Number	Percent
County Safekeeper	141	78.8%
Evaluator	38	21.2%
Grand Total	179	100.0%

Evaluator / Safekeeper Releases - FY2009 Statistical Reports

Commitment Area

Region	Number	Percent
Metro Omaha	15	8.4%
Metro Lincoln	3	1.7%
Southeast	72	40.2%
Northeast	55	30.7%
South Central	16	8.9%
North Central	6	3.4%
Panhandle	11	6.1%
Data Unavailable	1	0.6%
Grand Total	179	100.0%

Length of Stay in Institution

Months	Number	Percent	Cumulative Number	Cumulative Percent
0 - 1 Month	69	38.5%	69	38.5%
2 Months	50	27.9%	119	66.5%
3 Months	32	17.9%	151	84.4%
4 Months	14	7.8%	165	92.2%
5 Months	3	1.7%	168	93.9%
6 Months	2	1.1%	170	95.0%
7 - 12 Months	8	4.5%	178	99.4%
13 - 18 Months	1	0.6%	179	100.0%

WEC Releases - FY2009 Statistical Reports

Probationer Age at Admission

Age	Number	Percent	Cumulative Number	Cumulative Percent
17	8	4.9%	8	4.9%
18	21	12.9%	29	17.8%
19	35	21.5%	64	39.3%
20 - 24	63	38.7%	127	77.9%
25 - 29	13	8.0%	140	85.9%
30 - 34	8	4.9%	148	90.8%
35 - 39	6	3.7%	154	94.5%
40 - 44	5	3.1%	159	97.5%
45 - 49	4	2.5%	163	100.0%

Probationer Average Age at Admission

Age at Admission	# of Probationers
23.68	163

Probationer Age at Release

Age	Number	Percent	Cumulative Number	Cumulative Percent
17	4	2.5%	4	2.5%
18	16	9.8%	20	12.3%
19	28	17.2%	48	29.4%
20 - 24	75	46.0%	123	75.5%
25 - 29	16	9.8%	139	85.3%
30 - 34	7	4.3%	146	89.6%
35 - 39	6	3.7%	152	93.3%
40 - 44	6	3.7%	158	96.9%
45 - 49	4	2.5%	162	99.4%
Data Unavailable	1	0.6%	163	100.0%

Probationer Average Age at Release

Age at Admission	# of Probationers
24.08	163

Probationer Average Length of Stay

Years	Months	Days	# of Probationers
0.39	4.72	143	163

Probationer Release Date

Year/Month	Number	Percent
2008/07	13	8.0%
2008/08	10	6.1%
2008/09	7	4.3%
2008/10	15	9.2%
2008/11	14	8.6%
2008/12	11	6.7%
2009/01	16	9.8%
2009/02	9	5.5%
2009/03	12	7.4%
2009/04	20	12.3%
2009/05	19	11.7%
2009/06	17	10.4%
Grand Total	163	100.0%

Probationer Release Type

Type	Number	Percent
WEC RLSE-SUCCESSFUL	115	70.6%
WEC RLSE-GUARDED	21	12.9%
WEC RLSE-REMOVE-PROGRAM FAILURE	19	11.7%
WEC RLSE-ABSCOND	3	1.8%
WEC RLSE-MEDICAL/MENTL HEALTH	2	1.2%
WEC RLSE-REMOVAL VOLUNTARY	1	0.6%
WEC RLSE-REMOVE-NOT SUITABLE	1	0.6%
WEC RLSE-REVOKE-LAW VIOLATION	1	0.6%
Grand Total	163	100.0%

Probationer Race

Race	Number	Percent
White	125	76.7%
Black	19	11.7%
Hispanic	13	8.0%
Native American	5	3.1%
Asian	1	0.6%
Grand Total	163	100.0%

Probationer Gender

Gender	Number	Percent
Male	141	86.5%
Female	22	13.5%
Grand Total	163	100.0%

WEC Releases - FY2009 Statistical Reports

Probationer County of Commitment

County	Number	Percent
ADAMS	8	4.9%
BOONE	1	0.6%
BOX BUTTE	2	1.2%
BUFFALO	5	3.1%
BURT	1	0.6%
BUTLER	3	1.8%
CHEYENNE	1	0.6%
CLAY	1	0.6%
CUSTER	1	0.6%
DAKOTA	3	1.8%
DAWSON	4	2.5%
DEUEL	1	0.6%
DIXON	1	0.6%
DODGE	3	1.8%
DOUGLAS	24	14.7%
FILLMORE	1	0.6%
GAGE	10	6.1%
HALL	14	8.6%
HAMILTON	2	1.2%
HOLT	1	0.6%
HOWARD	2	1.2%
JEFFERSON	2	1.2%
LANCASTER	24	14.7%
LINCOLN	6	3.7%
MADISON	3	1.8%
MERRICK	2	1.2%
NANCE	1	0.6%
NEMAHA	5	3.1%
NUCKOLLS	1	0.6%
PAWNEE	2	1.2%
PHELPS	2	1.2%
PLATTE	3	1.8%
RED WILLOW	4	2.5%
RICHARDSON	1	0.6%
SARPY	4	2.5%
SAUNDERS	2	1.2%
SCOTTS BLUFF	12	7.4%
WASHINGTON	2	1.2%
WAYNE	1	0.6%
Grand Total	163	100.0%

Probationer Length of Stay in Institution

Months	Number	Percent	Cumulative Number	Cumulative Percent
0 - 1 Month	2	1.2%	2	1.2%
2 Months	6	3.7%	8	4.9%
3 Months	8	4.9%	16	9.8%
4 Months	8	4.9%	24	14.7%
5 Months	95	58.3%	119	73.0%
6 Months	42	25.8%	161	98.8%
7 - 12 Months	2	1.2%	163	100.0%

INMATE Releases (not probationer)

of Inmates
69

Community Corrections Admissions - FY2009 Statistical Reports

Age at Admission to Prison

Age at Admission	# of Inmates	Percent
15	1	0.1%
17	4	0.4%
18	13	1.3%
19	42	4.3%
20 - 24	195	19.8%
25 - 29	157	15.9%
30 - 34	137	13.9%
35 - 39	136	13.8%
40 - 44	120	12.2%
45 - 49	99	10.0%
50 - 54	53	5.4%
55 - 59	21	2.1%
60 and Over	9	0.9%
Grand Total	987	100.0%

Average Age at Admission to Prison

Age at Admission	# of Inmates
34.08	987

Gender

Gender	Number	Percent
Female	150	15.2%
Male	837	84.8%
Grand Total	987	100.0%

Race

Race	Number	Percent
HISPANIC	68	6.9%
WHITE	584	59.2%
ASIAN	5	0.5%
BLACK	275	27.9%
NATIVE AMERICAN	46	4.7%
OTHER	9	0.9%
Grand Total	987	100.0%

Status

Status	Number	Percent
First - Time	604	61.2%
Multiple	383	38.8%
Grand Total	987	100.0%

Most Serious Offense Category

Offense Category	# of Inmates	Percent
Drugs	254	25.7%
Motor Vehicle	175	17.7%
Theft	135	13.7%
Burglary	103	10.4%
Assault	97	9.8%
Robbery	64	6.5%
Fraud	48	4.9%
Other	32	3.2%
Sex Offenses	30	3.0%
Homicide	14	1.4%
Weapons	14	1.4%
Morals	13	1.3%
Arson	4	0.4%
Restraint	4	0.4%
Grand Total	987	100.0%

Community Corrections Admissions - FY2009 Statistical Reports

Minimum Sentence

Years	Number	Percent	Cumulative Number	Cumulative Percent
1 Yr or Less	192	19.5%	192	19.5%
1.01-2.00 Yrs	345	35.0%	537	54.4%
2.01-3.00 Yrs	140	14.2%	677	68.6%
3.01-4.00 Yrs	84	8.5%	761	77.1%
4.01-5.00 Yrs	57	5.8%	818	82.9%
5.01-6.00 Yrs	35	3.5%	853	86.4%
6.01-7.00 Yrs	14	1.4%	867	87.8%
7.01-8.00 Yrs	26	2.6%	893	90.5%
8.01-9.00 Yrs	8	0.8%	901	91.3%
9.01-10.00 Yrs	33	3.3%	934	94.6%
10.01-11.00 Yrs	3	0.3%	937	94.9%
11.01-12.00 Yrs	11	1.1%	948	96.0%
12.01-13.00 Yrs	6	0.6%	954	96.7%
13.01-14.00 Yrs	4	0.4%	958	97.1%
14.01-15.00 Yrs	7	0.7%	965	97.8%
15.01-16.00 Yrs	2	0.2%	967	98.0%
16.01-17.00 Yrs	5	0.5%	972	98.5%
17.01-18.00 Yrs	2	0.2%	974	98.7%
19.01-20.00 Yrs	6	0.6%	980	99.3%
20+ Years	7	0.7%	987	100.0%

Maximum Sentence

Years	Number	Percent	Cumulative Number	Cumulative Percent
1 Yr or Less	58	5.9%	58	5.9%
1.01-2.00 Yrs	127	12.9%	185	18.7%
2.01-3.00 Yrs	167	16.9%	352	35.7%
3.01-4.00 Yrs	137	13.9%	489	49.5%
4.01-5.00 Yrs	154	15.6%	643	65.1%
5.01-6.00 Yrs	65	6.6%	708	71.7%
6.01-7.00 Yrs	31	3.1%	739	74.9%
7.01-8.00 Yrs	51	5.2%	790	80.0%
8.01-9.00 Yrs	18	1.8%	808	81.9%
9.01-10.00 Yrs	40	4.1%	848	85.9%
10.01-11.00 Yrs	5	0.5%	853	86.4%
11.01-12.00 Yrs	17	1.7%	870	88.1%
12.01-13.00 Yrs	7	0.7%	877	88.9%
13.01-14.00 Yrs	9	0.9%	886	89.8%
14.01-15.00 Yrs	20	2.0%	906	91.8%
15.01-16.00 Yrs	5	0.5%	911	92.3%
16.01-17.00 Yrs	6	0.6%	917	92.9%
17.01-18.00 Yrs	5	0.5%	922	93.4%
18.01-19.00 Yrs	2	0.2%	924	93.6%
19.01-20.00 Yrs	24	2.4%	948	96.0%
20+ Years	37	3.7%	985	99.8%
Life	2	0.2%	987	100.0%

Parole Admissions - FY2009 Statistical Reports

Age at Release to Parole

Age	Number	Percent	Cumulative Number	Cumulative Percent
18	2	0.2%	2	0.2%
19	16	1.6%	18	1.8%
20 - 24	168	17.1%	186	18.9%
25 - 29	185	18.8%	371	37.8%
30 - 34	169	17.2%	540	55.0%
35 - 39	131	13.3%	671	68.3%
40 - 44	116	11.8%	787	80.1%
45 - 49	91	9.3%	878	89.4%
50 - 54	53	5.4%	931	94.8%
55 - 59	25	2.5%	956	97.4%
60 and Over	9	0.9%	965	98.3%
Data Unavailable	17	1.7%	982	100.0%

Average Age at Admission to Prison

Age at Admission	# of Inmates
32.56	982

Avg Age at Release to Parole

Age at Release	Number
34.85	982

Gender

Gender	Number	Percent
Male	852	86.8%
Female	130	13.2%
Grand Total	982	100.0%

Race

Race	Number	Percent
White	571	58.1%
Black	248	25.3%
Hispanic	114	11.6%
Native American	41	4.2%
Asian	5	0.5%
Other	3	0.3%
Grand Total	982	100.0%

Avg Min & Max Sentence

(Life set to 10-year average of 18.17 Yrs)

Avg MIN Sentence Mo's	Avg MAX Sentence Mo's	# of Inmates
41.73	80.19	982

Status

Status	Number	Percent
First - Time	603	61.4%
Multiple	379	38.6%
Grand Total	982	100.0%

Most Serious Offense Category

Offense Category	# of Inmates	Percent
Drugs	280	28.5%
Theft	141	14.4%
Motor Vehicle	110	11.2%
Burglary	102	10.4%
Assault	97	9.9%
Robbery	77	7.8%
Fraud	54	5.5%
Other	35	3.6%
Sex Offenses	27	2.8%
Weapons	19	1.9%
Homicide	16	1.6%
Morals	13	1.3%
Restraint	6	0.6%
Arson	4	0.4%
Grand Total	981	100.0%

Data Unavailable: 1

Parole Admissions - FY2009 Statistical Reports

Length of Stay in Institution

Month/Year	Number	Percent	Cumulative Number	Cumulative Percent
0 - 6 Months	59	6.0%	59	6.0%
7 - 12 Months	271	27.6%	330	33.6%
13 - 18 Months	201	20.5%	531	54.1%
19 - 24 Months	133	13.5%	664	67.6%
25 - 30 Months	33	3.4%	697	71.0%
31 - 36 Months	89	9.1%	786	80.0%
37 - 42 Months	36	3.7%	822	83.7%
43 - 48 Months	26	2.6%	848	86.4%
49 - 54 Months	27	2.7%	875	89.1%
55 - 60 Months	14	1.4%	889	90.5%
5.01 - 6.00 Yrs	21	2.1%	910	92.7%
6.01 - 7.00 Yrs	19	1.9%	929	94.6%
7.01 - 8.00 Yrs	11	1.1%	940	95.7%
8.01 - 9.00 Yrs	9	0.9%	949	96.6%
9.01 - 10.00 Yrs	7	0.7%	956	97.4%
10.01 - 11.00 Yrs	5	0.5%	961	97.9%
11.01 - 12.00 Yrs	2	0.2%	963	98.1%
12.01 - 13.00 Yrs	2	0.2%	965	98.3%
13.01 - 14.00 Yrs	2	0.2%	967	98.5%
14.01 - 15.00 Yrs	2	0.2%	969	98.7%
15.01 - 16.00 Yrs	1	0.1%	970	98.8%
16.01 - 17.00 Yrs	1	0.1%	971	98.9%
18.01 - 19.00 Yrs	3	0.3%	974	99.2%
Over 20 Years	8	0.8%	982	100.0%

Region Paroled To

Region	Number	Percent
IMMIGRATION	42	4.3%
US MARSHAL	22	2.2%
Metro Omaha	316	32.2%
Metro Lincoln	253	25.8%
Southeast	43	4.4%
Northeast	83	8.5%
South Central	95	9.7%
North Central	10	1.0%
Panhandle	20	2.0%
Out of State	83	8.5%
Data Unavailable	15	1.5%
Grand Total	982	100.0%

Parole Admissions - FY2009 Statistical Reports

Minimum Sentence

Years	Number	Percent	Cumulative Number	Cumulative Percent
1.00 Yr or Less	133	13.5%	133	13.5%
1.01-2.00 Yrs	396	40.3%	529	53.9%
2.01-3.00 Yrs	148	15.1%	677	68.9%
3.01-4.00 Yrs	86	8.8%	763	77.7%
4.01-5.00 Yrs	56	5.7%	819	83.4%
5.01-6.00 Yrs	38	3.9%	857	87.3%
6.01-7.00 Yrs	25	2.5%	882	89.8%
7.01-8.00 Yrs	22	2.2%	904	92.1%
8.01-9.00 Yrs	8	0.8%	912	92.9%
9.01-10.00 Yrs	31	3.2%	943	96.0%
10.01-11.00 Yrs	5	0.5%	948	96.5%
11.01-12.00 Yrs	2	0.2%	950	96.7%
12.01-13.00 Yrs	4	0.4%	954	97.1%
13.01-14.00 Yrs	5	0.5%	959	97.7%
14.01-15.00 Yrs	2	0.2%	961	97.9%
15.01-16.00 Yrs	2	0.2%	963	98.1%
16.01-17.00 Yrs	6	0.6%	969	98.7%
17.01-18.00 Yrs	3	0.3%	972	99.0%
19.01-20.00 Yrs	3	0.3%	975	99.3%
Over 20 Years	7	0.7%	982	100.0%

Maximum Sentence

Years	Number	Percent	Cumulative Number	Cumulative Percent
1.00 Yr or Less	4	0.4%	4	0.4%
1.01-2.00 Yrs	101	10.3%	105	10.7%
2.01-3.00 Yrs	188	19.1%	293	29.8%
3.01-4.00 Yrs	158	16.1%	451	45.9%
4.01-5.00 Yrs	162	16.5%	613	62.4%
5.01-6.00 Yrs	75	7.6%	688	70.1%
6.01-7.00 Yrs	40	4.1%	728	74.1%
7.01-8.00 Yrs	41	4.2%	769	78.3%
8.01-9.00 Yrs	18	1.8%	787	80.1%
9.01-10.00 Yrs	51	5.2%	838	85.3%
10.01-11.00 Yrs	13	1.3%	851	86.7%
11.01-12.00 Yrs	26	2.6%	877	89.3%
12.01-13.00 Yrs	11	1.1%	888	90.4%
13.01-14.00 Yrs	3	0.3%	891	90.7%
14.01-15.00 Yrs	20	2.0%	911	92.8%
15.01-16.00 Yrs	12	1.2%	923	94.0%
16.01-17.00 Yrs	5	0.5%	928	94.5%
17.01-18.00 Yrs	5	0.5%	933	95.0%
19.01-20.00 Yrs	11	1.1%	944	96.1%
Over 20 Years	31	3.2%	975	99.3%
Life	7	0.7%	982	100.0%

Parole Discharges - FY2009 Statistical Reports

Age at Parole Admission

Age	Number	Percent	Cumulative Number	Cumulative Percent
18	1	0.1%	1	0.1%
19	9	1.3%	10	1.4%
20 - 24	113	15.7%	123	17.1%
25 - 29	157	21.9%	280	39.0%
30 - 34	107	14.9%	387	53.9%
35 - 39	100	13.9%	487	67.8%
40 - 44	86	12.0%	573	79.8%
45 - 49	70	9.7%	643	89.6%
50 - 54	43	6.0%	686	95.5%
55 - 59	21	2.9%	707	98.5%
60 and Over	11	1.5%	718	100.0%

Avg Age at Parole Admission

Age at Parole	Number
35.43	718

Age at Release from Parole

Age	Number	Percent	Cumulative Number	Cumulative Percent
19	7	1.0%	7	1.0%
20 - 24	95	13.2%	102	14.2%
25 - 29	157	21.9%	259	36.1%
30 - 34	113	15.7%	372	51.8%
35 - 39	98	13.6%	470	65.5%
40 - 44	88	12.3%	558	77.7%
45 - 49	72	10.0%	630	87.7%
50 - 54	49	6.8%	679	94.6%
55 - 59	28	3.9%	707	98.5%
60 and Over	11	1.5%	718	100.0%
Grand Total	718	100.0%	718	100.0%

Avg Age at Release from Parole

Age at Release	Number
36.20	718

Race

Race	Number	Percent
White	440	61.3%
Black	152	21.2%
Hispanic	99	13.8%
Native American	17	2.4%
Asian	10	1.4%
Grand Total	718	100.0%

Status

Status	Number	Percent
First - Time	478	66.6%
Multiple	240	33.4%
Grand Total	718	100.0%

Gender

Gender	Number	Percent
Male	600	83.6%
Female	118	16.4%
Grand Total	718	100.0%

Parole Discharge Date

Date	Number	Percent
2008/07	73	10.2%
2008/08	55	7.7%
2008/09	64	8.9%
2008/10	53	7.4%
2008/11	48	6.7%
2008/12	53	7.4%
2009/01	69	9.6%
2009/02	63	8.8%
2009/03	62	8.6%
2009/04	55	7.7%
2009/05	59	8.2%
2009/06	64	8.9%
Grand Total	718	100.0%

Avg Min & Max Sentence

(Life set to 10-year average of 18.17 Yrs)

Avg MIN Sentence Mo's	Avg MAX Sentence Mo's	# of Inmates
35.99	67.79	718

Parole Discharges - FY2009 Statistical Reports

Average Length of Stay on Parole

Years on Parole	Months on Parole	Days on Parole	# of Inmates
0.75	8.99	273	718

Length of Stay in Institution

Month/Year	Number	Percent	Cumulative Number	Cumulative Percent
0 - 6 Months	53	7.4%	53	7.4%
7 - 12 Months	247	34.4%	300	41.8%
13 - 18 Months	170	23.7%	470	65.5%
19 - 24 Months	93	13.0%	563	78.4%
25 - 30 Months	13	1.8%	576	80.2%
31 - 36 Months	47	6.5%	623	86.8%
37 - 42 Months	19	2.6%	642	89.4%
43 - 48 Months	13	1.8%	655	91.2%
49 - 54 Months	10	1.4%	665	92.6%
55 - 60 Months	8	1.1%	673	93.7%
5.01 - 6.00 Yrs	8	1.1%	681	94.8%
6.01 - 7.00 Yrs	9	1.3%	690	96.1%
7.01 - 8.00 Yrs	5	0.7%	695	96.8%
8.01 - 9.00 Yrs	4	0.6%	699	97.4%
9.01 - 10.00 Yrs	8	1.1%	707	98.5%
10.01 - 11.00 Yrs	3	0.4%	710	98.9%
11.01 - 12.00 Yrs	1	0.1%	711	99.0%
13.01 - 14.00 Yrs	1	0.1%	712	99.2%
14.01 - 15.00 Yrs	3	0.4%	715	99.6%
18.01 - 19.00 Yrs	1	0.1%	716	99.7%
Over 20 Years	2	0.3%	718	100.0%

Avg Total Length of Stay in Institution and Parole

Years	Months	Days	Number
2.62	31.43	956	718

Length of Stay on Parole

Month/Year	Number	Percent	Cumulative Number	Cumulative Percent
0 - 6 Months	335	46.7%	335	46.7%
7 - 12 Months	226	31.5%	561	78.1%
13 - 18 Months	79	11.0%	640	89.1%
19 - 24 Months	44	6.1%	684	95.3%
25 - 30 Months	7	1.0%	691	96.2%
31 - 36 Months	21	2.9%	712	99.2%
37 - 42 Months	1	0.1%	713	99.3%
43 - 48 Months	1	0.1%	714	99.4%
49 - 54 Months	1	0.1%	715	99.6%
55 - 60 Months	2	0.3%	717	99.9%
10.01 - 11.00 Yrs	1	0.1%	718	100.0%

Parole Discharges - FY2009 Statistical Reports

Total Length of Stay in Institution and Parole

Month/Year	Number	Percent	Cumulative Number	Cumulative Percent
0 - 6 Months	1	0.1%	1	0.1%
7 - 12 Months	133	18.5%	134	18.7%
13 - 18 Months	147	20.5%	281	39.1%
19 - 24 Months	118	16.4%	399	55.6%
25 - 30 Months	40	5.6%	439	61.1%
31 - 36 Months	118	16.4%	557	77.6%
37 - 42 Months	26	3.6%	583	81.2%
43 - 48 Months	33	4.6%	616	85.8%
49 - 54 Months	24	3.3%	640	89.1%
55 - 60 Months	18	2.5%	658	91.6%
5.01 - 6.00 Yrs	11	1.5%	669	93.2%
6.01 - 7.00 Yrs	8	1.1%	677	94.3%
7.01 - 8.00 Yrs	6	0.8%	683	95.1%
8.01 - 9.00 Yrs	5	0.7%	688	95.8%
9.01 - 10.00 Yrs	8	1.1%	696	96.9%
10.01 - 11.00 Yrs	5	0.7%	701	97.6%
11.01 - 12.00 Yrs	8	1.1%	709	98.7%
12.01 - 13.00 Yrs	2	0.3%	711	99.0%
14.01 - 15.00 Yrs	2	0.3%	713	99.3%
16.01 - 17.00 Yrs	2	0.3%	715	99.6%
18.01 - 19.00 Yrs	1	0.1%	716	99.7%
Over 20 Years	2	0.3%	718	100.0%

Most Serious Offense Category

Offense Category	# of Inmates	Percent
Drugs	232	32.3%
Theft	95	13.2%
Motor Vehicle	92	12.8%
Burglary	77	10.7%
Assault	66	9.2%
Fraud	44	6.1%
Robbery	31	4.3%
Other	26	3.6%
Sex Offenses	19	2.6%
Morals	10	1.4%
Weapons	9	1.3%
Homicide	8	1.1%
Arson	5	0.7%
Restraint	4	0.6%
Grand Total	718	100.0%

Region Discharged To

Region	Number	Percent
IMMIGRATION	37	5.2%
US MARSHAL	14	1.9%
Metro Omaha	228	31.8%
Metro Lincoln	167	23.3%
Southeast	37	5.2%
Northeast	59	8.2%
South Central	65	9.1%
North Central	9	1.3%
Panhandle	18	2.5%
Out of State	79	11.0%
Data Unavailable	5	0.7%
Grand Total	718	100.0%

Parole Discharges - FY2009 Statistical Reports

Minimum Sentence

Years	Number	Percent	Cumulative Number	Cumulative Percent
1.00 Yr or Less	123	17.1%	123	17.1%
1.01-2.00 Yrs	322	44.8%	445	62.0%
2.01-3.00 Yrs	91	12.7%	536	74.7%
3.01-4.00 Yrs	65	9.1%	601	83.7%
4.01-5.00 Yrs	37	5.2%	638	88.9%
5.01-6.00 Yrs	20	2.8%	658	91.6%
6.01-7.00 Yrs	13	1.8%	671	93.5%
7.01-8.00 Yrs	7	1.0%	678	94.4%
8.01-9.00 Yrs	2	0.3%	680	94.7%
9.01-10.00 Yrs	8	1.1%	688	95.8%
10.01-11.00 Yrs	4	0.6%	692	96.4%
11.01-12.00 Yrs	9	1.3%	701	97.6%
13.01-14.00 Yrs	3	0.4%	704	98.1%
14.01-15.00 Yrs	7	1.0%	711	99.0%
15.01-16.00 Yrs	2	0.3%	713	99.3%
17.01-18.00 Yrs	1	0.1%	714	99.4%
18.01-19.00 Yrs	1	0.1%	715	99.6%
Over 20 Years	3	0.4%	718	100.0%

Maximum Sentence

Years	Number	Percent	Cumulative Number	Cumulative Percent
1.00 Yr or Less	1	0.1%	1	0.1%
1.01-2.00 Yrs	106	14.8%	107	14.9%
2.01-3.00 Yrs	162	22.6%	269	37.5%
3.01-4.00 Yrs	113	15.7%	382	53.2%
4.01-5.00 Yrs	120	16.7%	502	69.9%
5.01-6.00 Yrs	49	6.8%	551	76.7%
6.01-7.00 Yrs	23	3.2%	574	79.9%
7.01-8.00 Yrs	35	4.9%	609	84.8%
8.01-9.00 Yrs	15	2.1%	624	86.9%
9.01-10.00 Yrs	30	4.2%	654	91.1%
10.01-11.00 Yrs	5	0.7%	659	91.8%
11.01-12.00 Yrs	10	1.4%	669	93.2%
12.01-13.00 Yrs	5	0.7%	674	93.9%
13.01-14.00 Yrs	4	0.6%	678	94.4%
14.01-15.00 Yrs	7	1.0%	685	95.4%
15.01-16.00 Yrs	2	0.3%	687	95.7%
17.01-18.00 Yrs	2	0.3%	689	96.0%
18.01-19.00 Yrs	1	0.1%	690	96.1%
19.01-20.00 Yrs	12	1.7%	702	97.8%
Over 20 Years	16	2.2%	718	100.0%

Parole Revocations - FY2009 Statistical Reports

Age at Release to Parole

Age	Number	Percent	Cumulative Number	Cumulative Percent
18	3	1.0%	3	1.0%
19	4	1.3%	7	2.4%
20 - 24	70	23.6%	77	25.9%
25 - 29	54	18.2%	131	44.1%
30 - 34	47	15.8%	178	59.9%
35 - 39	41	13.8%	219	73.7%
40 - 44	33	11.1%	252	84.8%
45 - 49	28	9.4%	280	94.3%
50 - 54	13	4.4%	293	98.7%
55 - 59	2	0.7%	295	99.3%
60 and Over	1	0.3%	296	99.7%
Data Unavailable	1	0.3%	297	100.0%

Avg Age at Release to Parole

Age at Release	Number
33.29	297

Age at Revocation

Age	Number	Percent	Cumulative Number	Cumulative Percent
18	3	1.0%	3	1.0%
19	3	1.0%	6	2.0%
20 - 24	65	21.9%	71	23.9%
25 - 29	62	20.9%	133	44.8%
30 - 34	38	12.8%	171	57.6%
35 - 39	45	15.2%	216	72.7%
40 - 44	31	10.4%	247	83.2%
45 - 49	32	10.8%	279	93.9%
50 - 54	14	4.7%	293	98.7%
55 - 59	3	1.0%	296	99.7%
60 and Over	1	0.3%	297	100.0%

Avg Age at Revocation

Age at Revocation	Number
33.83	297

Admission Status

Status	Number	Percent
First - Time	154	51.9%
Multiple	143	48.1%
Grand Total	297	100.0%

Gender

Gender	Number	Percent
Male	254	85.5%
Female	43	14.5%
Grand Total	297	100.0%

Race

Race	Number	Percent
WHITE	140	47.1%
BLACK	113	38.0%
HISPANIC	24	8.1%
NATIVE AMERICAN	17	5.7%
ASIAN	2	0.7%
OTHER	1	0.3%
Grand Total	297	100.0%

Avg Min & Max Sentence

(Life set to 10-year average of 18.17 Yrs)

Avg MIN Sentence Mo's	Avg MAX Sentence Mo's	# of Inmates
54.16	109.02	297

Parole Revocations - FY2009 Statistical Reports

Revocation Date

Date	Number	Percent
7/2008	22	7.4%
8/2008	35	11.8%
9/2008	17	5.7%
10/2008	29	9.8%
11/2008	21	7.1%
12/2008	19	6.4%
1/2009	20	6.7%
2/2009	30	10.1%
3/2009	27	9.1%
4/2009	21	7.1%
5/2009	26	8.8%
6/2009	30	10.1%
Grand Total	297	100.0%

Most Serious Offense Category

Offense Category	Number	Percent
Drugs	107	36.0%
Theft	91	30.6%
Robbery	55	18.5%
Burglary	51	17.2%
Assault	48	16.2%
Motor Vehicle	44	14.8%
Other	38	12.8%
Weapons	38	12.8%
Fraud	32	10.8%
Homicide	4	1.3%
Restraint	3	1.0%
Sex Offenses	3	1.0%
Arson	2	0.7%
Morals	2	0.7%
Grand Total	297	100.0%

County Paroled To

County	Number	Percent
DOUGLAS	126	42.4%
LANCASTER	82	27.6%
DATA UNAVAILABLE	13	4.4%
SARPY	12	4.0%
DODGE	9	3.0%
SCOTTS BLUFF	7	2.4%
HALL	6	2.0%
ADAMS	4	1.3%
GAGE	4	1.3%
MADISON	4	1.3%
SAUNDERS	3	1.0%
DAWSON	2	0.7%
KEITH	2	0.7%
KNOX	2	0.7%
LINCOLN	2	0.7%
LOGAN	2	0.7%
MERRICK	2	0.7%
BUFFALO	1	0.3%
CASS	1	0.3%
CHASE	1	0.3%
CHEYENNE	1	0.3%
COLFAX	1	0.3%
CUSTER	1	0.3%
DAKOTA	1	0.3%
HARLAN	1	0.3%
JEFFERSON	1	0.3%
NEMAHA	1	0.3%
OTOE	1	0.3%
RED WILLOW	1	0.3%
SHERIDAN	1	0.3%
SHERMAN	1	0.3%
STANTON	1	0.3%
Grand Total	297	100.0%

Parole Revocations - FY2009 Statistical Reports

Minimum Sentence

Years	Number	Percent	Cumulative Number	Cumulative Percent
1.00 Yr or Less	20	6.7%	20	6.7%
1.01-2.00 Yrs	98	33.0%	118	39.7%
2.01-3.00 Yrs	36	12.1%	154	51.9%
3.01-4.00 Yrs	46	15.5%	200	67.3%
4.01-5.00 Yrs	21	7.1%	221	74.4%
5.01-6.00 Yrs	14	4.7%	235	79.1%
6.01-7.00 Yrs	12	4.0%	247	83.2%
7.01-8.00 Yrs	10	3.4%	257	86.5%
8.01-9.00 Yrs	8	2.7%	265	89.2%
9.01-10.00 Yrs	10	3.4%	275	92.6%
10.01-11.00 Yrs	2	0.7%	277	93.3%
11.01-12.00 Yrs	3	1.0%	280	94.3%
12.01-13.00 Yrs	1	0.3%	281	94.6%
13.01-14.00 Yrs	2	0.7%	283	95.3%
14.01-15.00 Yrs	1	0.3%	284	95.6%
15.01-16.00 Yrs	1	0.3%	285	96.0%
16.01-17.00 Yrs	5	1.7%	290	97.6%
17.01-18.00 Yrs	1	0.3%	291	98.0%
19.01-20.00 Yrs	2	0.7%	293	98.7%
Over 20 Years	4	1.3%	297	100.0%

Maximum Sentence

Years	Number	Percent	Cumulative Number	Cumulative Percent
1.00 Yr or Less	3	1.0%	3	1.0%
1.01-2.00 Yrs	8	2.7%	11	3.7%
2.01-3.00 Yrs	34	11.4%	45	15.2%
3.01-4.00 Yrs	35	11.8%	80	26.9%
4.01-5.00 Yrs	49	16.5%	129	43.4%
5.01-6.00 Yrs	27	9.1%	156	52.5%
6.01-7.00 Yrs	18	6.1%	174	58.6%
7.01-8.00 Yrs	16	5.4%	190	64.0%
8.01-9.00 Yrs	9	3.0%	199	67.0%
9.01-10.00 Yrs	25	8.4%	224	75.4%
10.01-11.00 Yrs	8	2.7%	232	78.1%
11.01-12.00 Yrs	6	2.0%	238	80.1%
12.01-13.00 Yrs	6	2.0%	244	82.2%
13.01-14.00 Yrs	6	2.0%	250	84.2%
14.01-15.00 Yrs	9	3.0%	259	87.2%
15.01-16.00 Yrs	8	2.7%	267	89.9%
16.01-17.00 Yrs	3	1.0%	270	90.9%
17.01-18.00 Yrs	4	1.3%	274	92.3%
19.01-20.00 Yrs	6	2.0%	280	94.3%
Over 20 Years	16	5.4%	296	99.7%
Life	1	0.3%	297	100.0%

Nebraska Department of Correctional Services
3-Year Recidivism* Data Report FY2003 to FY2006

Pop:	Releases				Recidivists				Technical Violators				% Recidivism			
	FY03	FY04	FY05	FY06	FY03	FY04	FY05	FY06	FY03	FY04	FY05	FY06	FY03	FY04	FY05	FY06
FEMALES																
Paroles	100	117	103	136	14	9	12	16	13	26	22	19	27.0	29.9	33.0	25.7
Mand Discharges	<u>140</u>	<u>119</u>	<u>128</u>	<u>205</u>	<u>24</u>	<u>20</u>	<u>21</u>	<u>27</u>	<u>n/a</u>	<u>n/a</u>	<u>n/a</u>	<u>n/a</u>	<u>17.1</u>	<u>16.8</u>	<u>16.4</u>	<u>13.2</u>
TOTAL	240	236	231	341	38	29	33	43	13	26	22	19	21.3	23.3	23.8	18.2
MALES																
Paroles	514	737	697	702	93	160	142	126	110	180	163	132	39.5	46.1	43.8	36.8
Mand Discharges	<u>1015</u>	<u>898</u>	<u>881</u>	<u>1071</u>	<u>204</u>	<u>183</u>	<u>215</u>	<u>217</u>	<u>n/a</u>	<u>n/a</u>	<u>n/a</u>	<u>n/a</u>	<u>20.1</u>	<u>20.4</u>	<u>24.4</u>	<u>20.3</u>
TOTAL	1529	1635	1578	1773	297	343	357	343	110	180	163	132	26.6	32.0	33.0	26.8
FEMALES & MALES																
Paroles	614	854	800	838	107	169	154	142	123	206	185	151	37.5	43.9	42.4	35.0
Mand Discharges	<u>1155</u>	<u>1017</u>	<u>1009</u>	<u>1276</u>	<u>228</u>	<u>203</u>	<u>236</u>	<u>244</u>	<u>n/a</u>	<u>n/a</u>	<u>n/a</u>	<u>n/a</u>	<u>19.7</u>	<u>20.0</u>	<u>23.4</u>	<u>19.1</u>
TOTAL	1769	1871	1809	2114	335	372	390	386	123	206	185	151	25.9	30.9	31.8	25.4

Starting in fiscal year 2003, NE-DCS began using ASCA-defined measures to configure recidivism rate.
*All recidivists were committed for new crimes or for technical violations within 3 years of their release date.



THIS PUBLICATION WAS PREPARED BY NEBRASKA
DEPARTMENT OF CORRECTIONAL SERVICES, PLANNING, RESEARCH AND
ACCREDITATION (PRA)

JAMES FOSTER, ADMINISTRATIVE ASSISTANT III
&
BECKI HICKMAN, SR. APPLICATION DEVELOPER- PRA